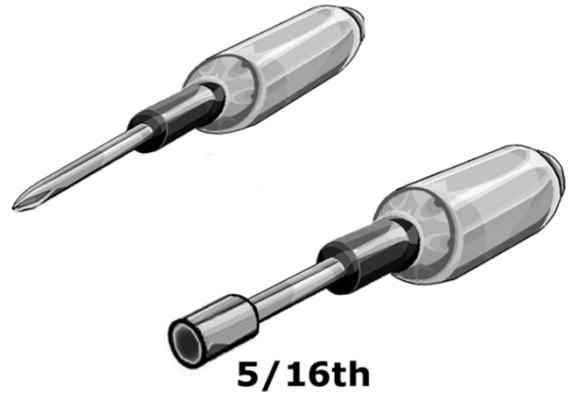


MapIT[®] G2 SFE PCB Upgrade Instructions

MapIT G2 Ready Enclosure

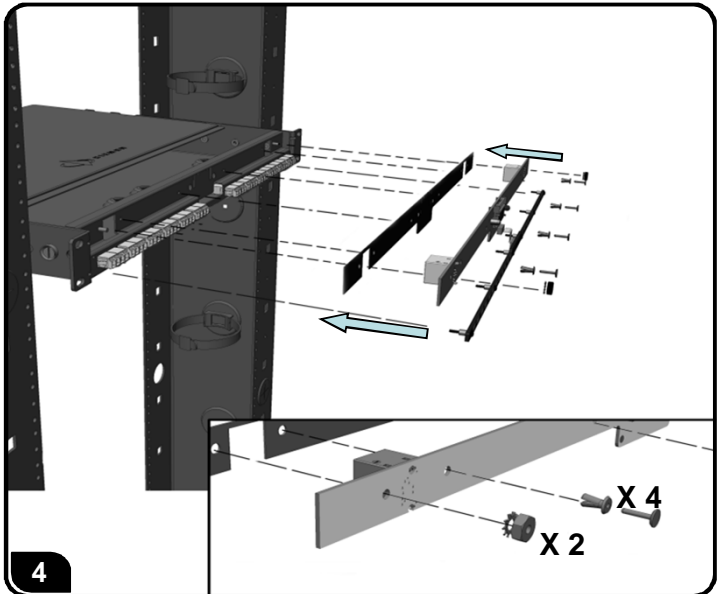
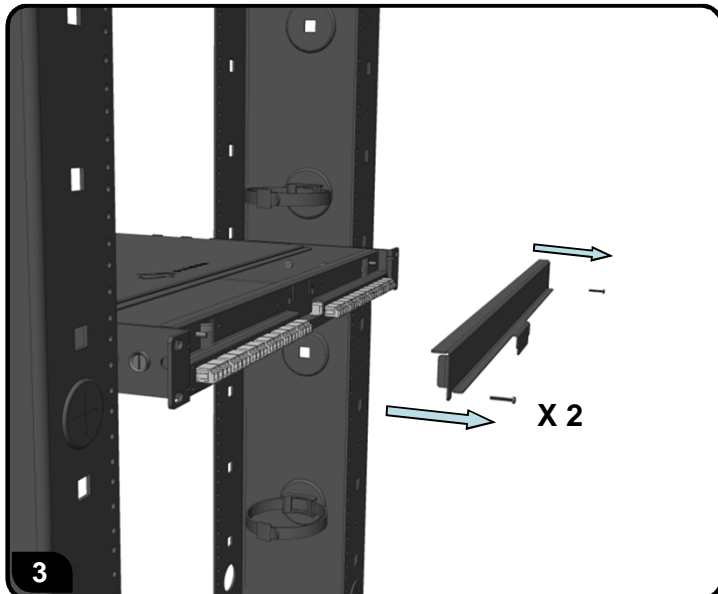
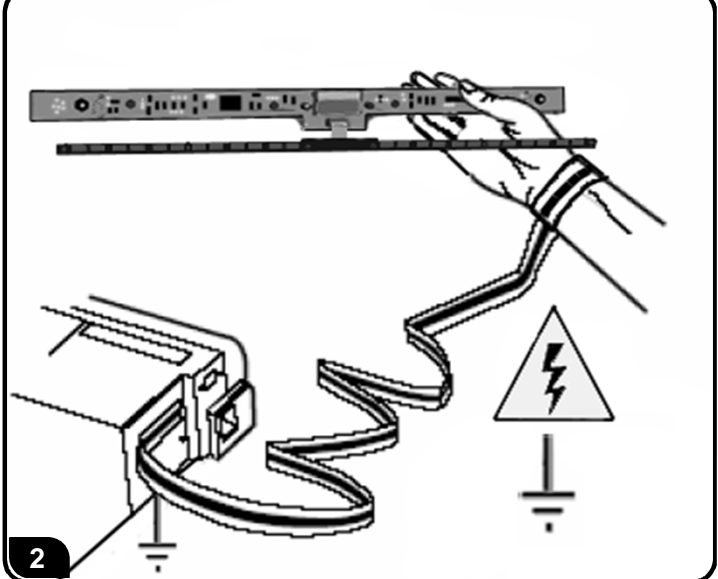
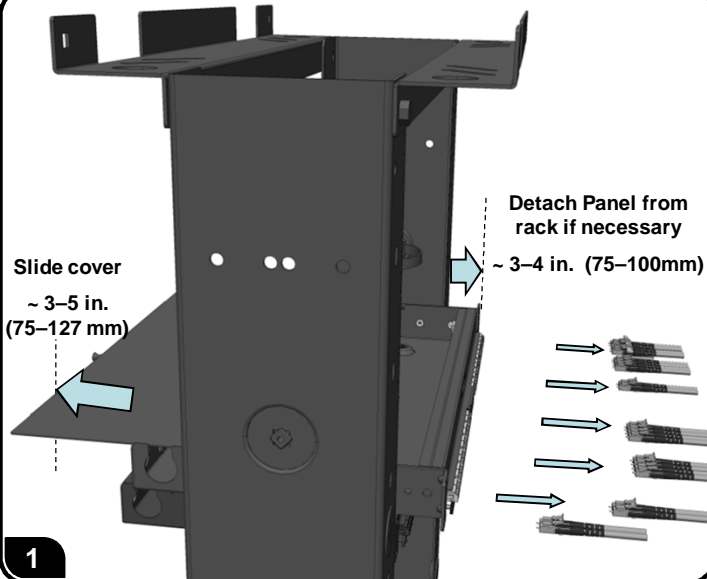


MapIT G2 Smart Enclosure

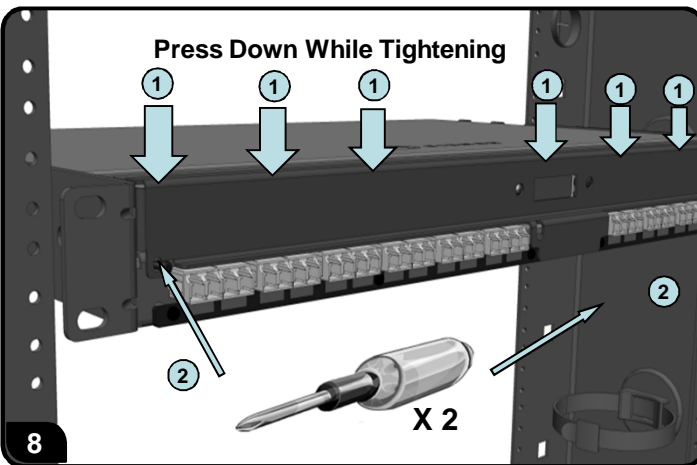
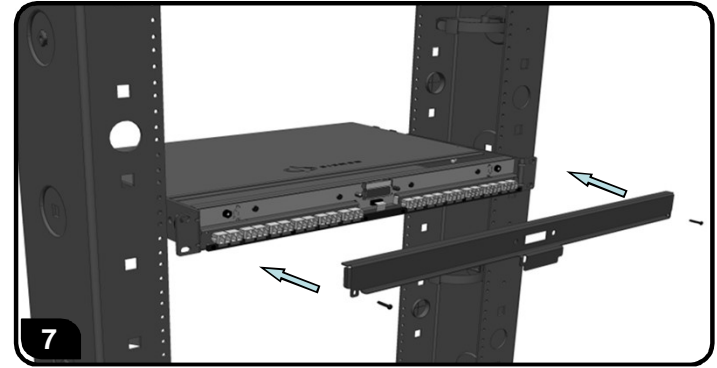
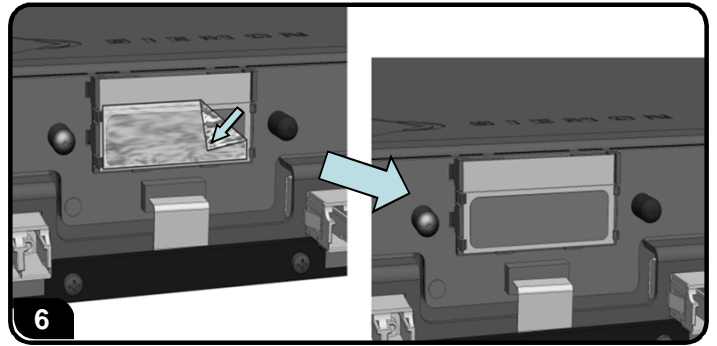
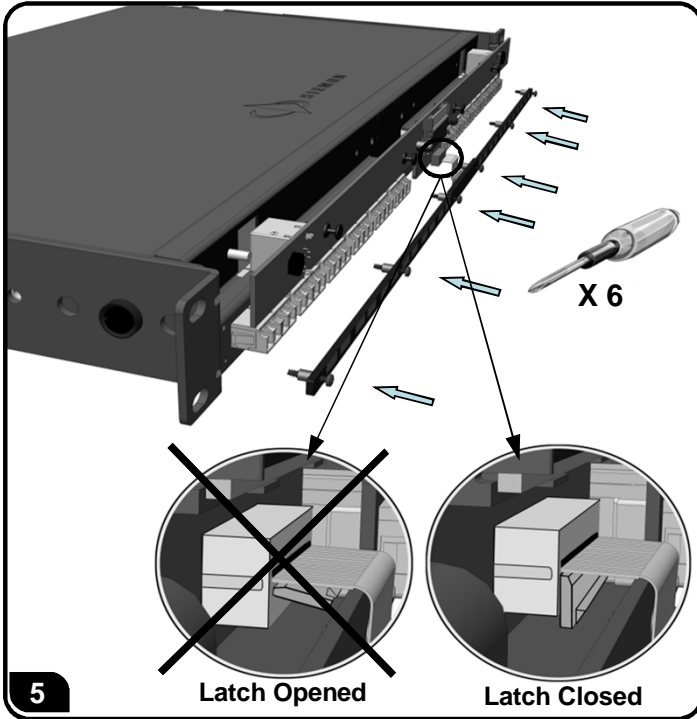


5/16th

Tools

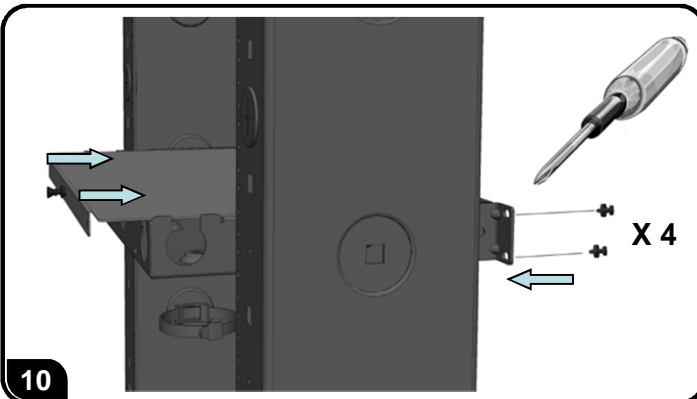


MapIT® G2 SFE PCB Upgrade Instructions



Adhere safety compliance sticker and new part number sticker provided over existing MapIT ready part number sticker on bottom of panel.

9



To ensure you have the latest revision to this document, please visit:

www.siemon.com/us

For additional setup and control cable connections, reference pdf:
MapIT G2 Control Panel to SFE:

To assist safe installations, comply with the following:

- A. Use caution when installing or modifying telecommunications circuits.
- B. Never touch uninsulated wire terminals unless the circuit has been disconnected.
- C. Never install this device in a wet location.
- D. Never install wiring during a lightning storm.

Lors de l'installation, respectez les consignes de sécurité suivantes:

- A. Utiliser avec prudence lors de l'installation ou de la modification circuits de télécommunications.
- B. Ne jamais toucher les bornes de fil métallique non isolés sauf si le circuit a été débranché.
- C. Ne jamais installer cet appareil dans un endroit humide.
- D. Ne jamais installer pendant un orage.

Global Headquarters
Watertown, Connecticut USA
Tel: (1) 866-548-5814



www.siemon.com

For a complete listing of our global offices visit our web site