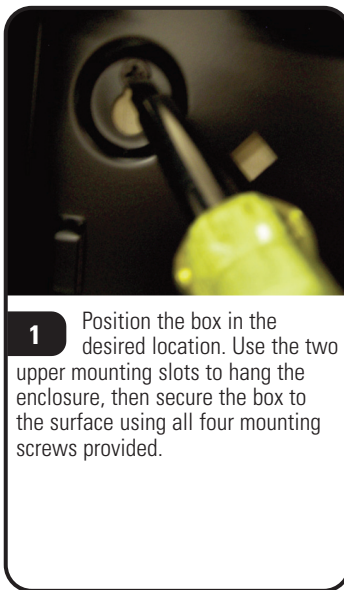


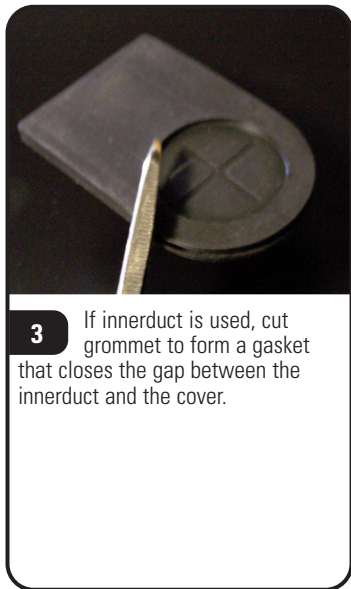
# Wall Mount Interconnect Center (SWIC3G-E)



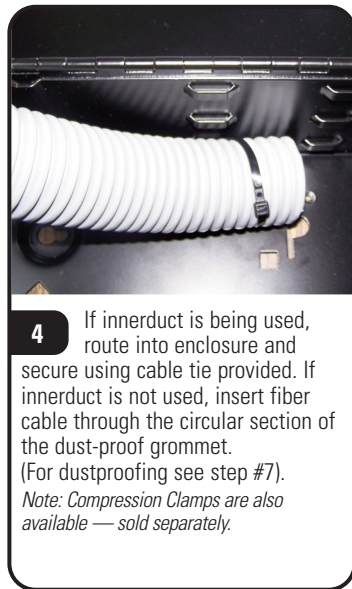
**1** Position the box in the desired location. Use the two upper mounting slots to hang the enclosure, then secure the box to the surface using all four mounting screws provided.



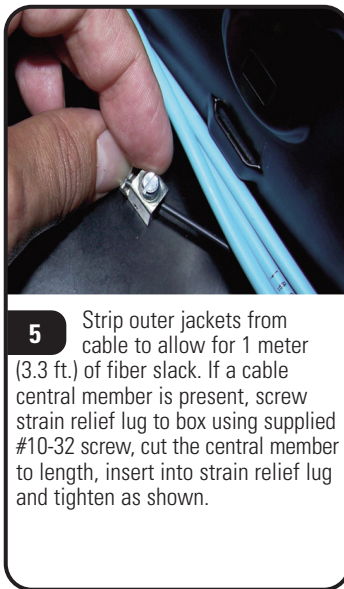
**2** Install the fiber management clips into position. Simply insert into square cut-outs and twist 45 degrees into locking position as shown.



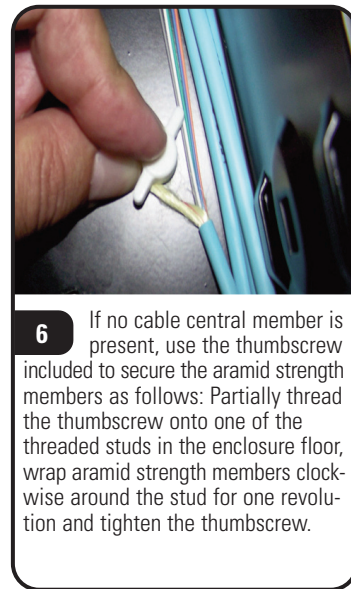
**3** If innerduct is used, cut grommet to form a gasket that closes the gap between the innerduct and the cover.



**4** If innerduct is being used, route into enclosure and secure using cable tie provided. If innerduct is not used, insert fiber cable through the circular section of the dust-proof grommet. (For dustproofing see step #7).  
*Note: Compression Clamps are also available — sold separately.*



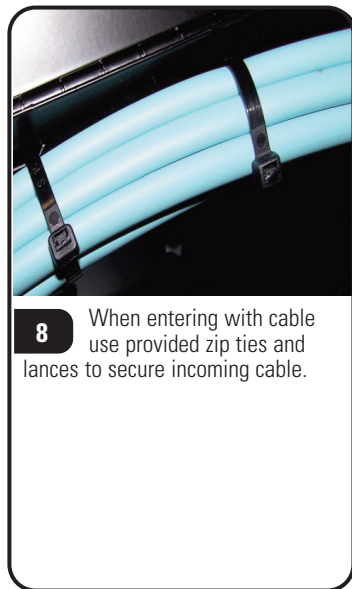
**5** Strip outer jackets from cable to allow for 1 meter (3.3 ft.) of fiber slack. If a cable central member is present, screw strain relief lug to box using supplied #10-32 screw, cut the central member to length, insert into strain relief lug and tighten as shown.



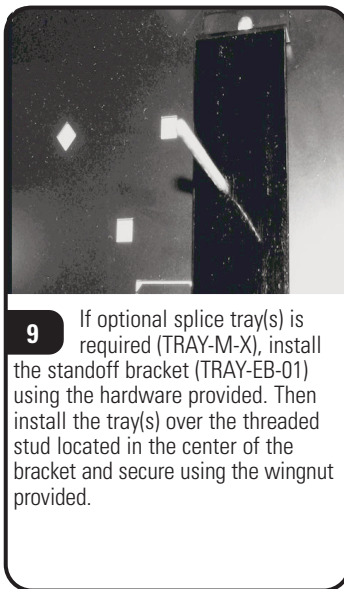
**6** If no cable central member is present, use the thumbscrew present, use the thumbscrew as follows: Partially thread the thumbscrew onto one of the threaded studs in the enclosure floor, wrap aramid strength members clockwise around the stud for one revolution and tighten the thumbscrew.



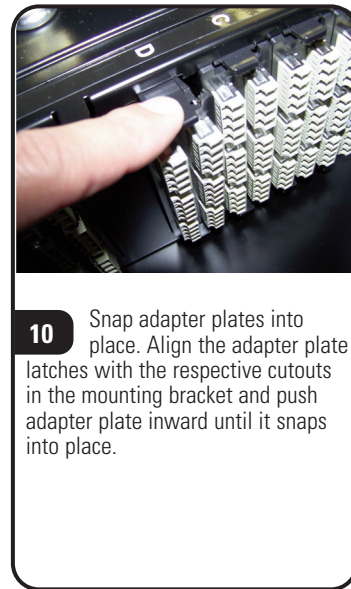
**7** Slide rubber grommets into the side opening. Cut an "X" into the grommet for cable pass through where applicable.



**8** When entering with cable use provided zip ties and lances to secure incoming cable.

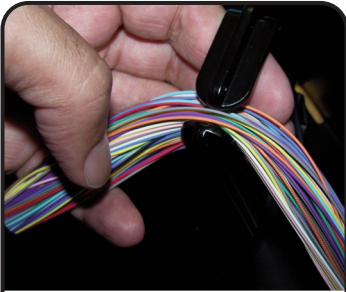


**9** If optional splice tray(s) is required (TRAY-M-X), install the standoff bracket (TRAY-EB-01) using the hardware provided. Then install the tray(s) over the threaded stud located in the center of the bracket and secure using the wingnut provided.



**10** Snap adapter plates into place. Align the adapter plate latches with the respective cutouts in the mounting bracket and push adapter plate inward until it snaps into place.

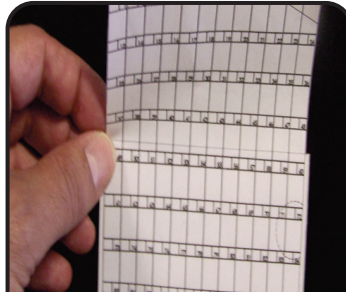
# Wall Mount Interconnect Center (SWIC3G-E)



**11** Terminate (or splice) fiber or utilize pre-terminated trunks. Lace fiber strands and jumpers into fiber management clips as shown.



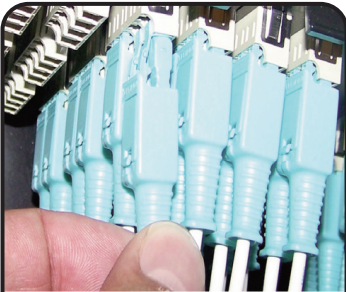
**12** Mate terminated connectors to the appropriate ports on the Quick-Pack™ adapter plate.



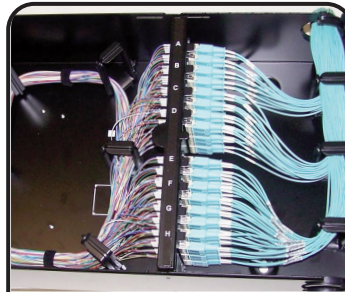
**13** Mark port IDs on the enclosure labels provided for both doors.  
*Note: Label templates available at: [www.siemon.com](http://www.siemon.com)*



**14** Rotate side grommet(s) to open position. Dress jumpers through opening. Rotate side grommet(s) to closed position.



**15** Connect jumpers to Quick-Packs™.



**16** This photo shows a SWIC3G with cables and jumpers completely installed.



**17** Affix DANGER label to front cover of box or to wall near box.

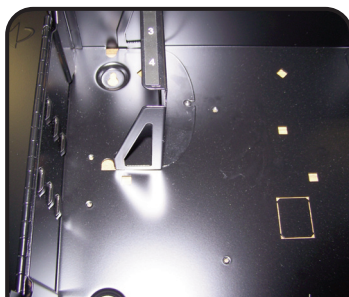


**18** Use included blanks to fill 6 unused openings as shown. (See next page for splitter cassette application)

**Global Headquarters**  
Watertown, Connecticut USA  
Tel: (1) 866-548-5814

For a complete listing of our global offices visit our web site

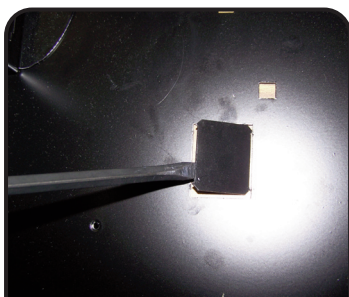
# Splitter Cassette Instructions



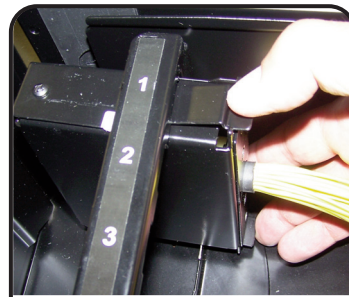
**1** If using optional SWIC3G-E-BRKT bracket and splitter cassettes slide SWIC3G-E-BRKT bracket into "D" shaped openings and position to right until mounting hole is lined up with corresponding hole in enclosure.



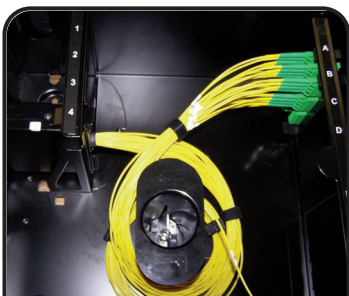
**1A** Use provided Phillips screw to secure bracket to enclosure.



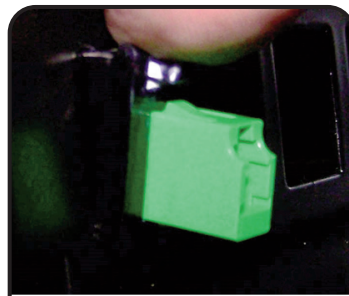
**2** Remove fiber storage spool knock out from back of enclosure. Attach fiber spool by squeezing spool base and pushing into opening.



**3** Place front face splitter module into SWIC3G-E-BRKT bracket as shown.



**4** Dress splitter legs around fiber storage spool and mate terminated connectors to plates as shown in step 12.



**5** Use side MX Simplex openings to hold MX fiber adapters for input legs of splitter cassette(s).

