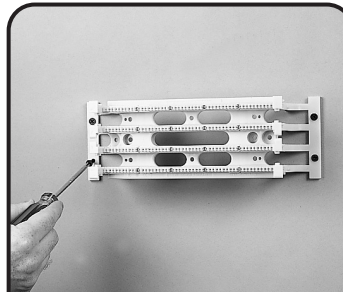
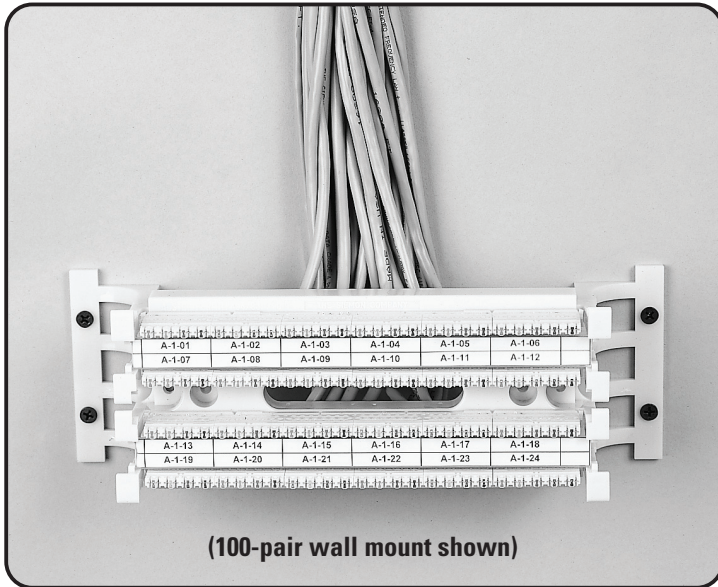
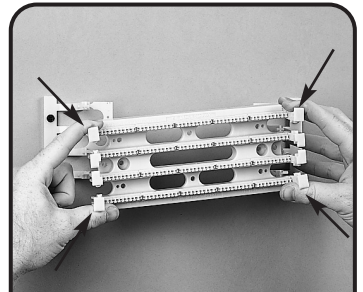


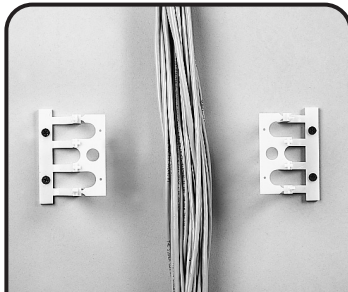
S110 Wiring Block Instructions



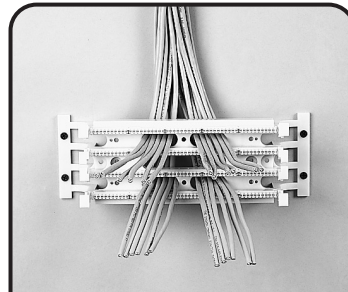
1 Mount the S110® wiring base and legs onto a suitable mounting surface with the necessary screws and hardware.



2 Remove the S110® wiring base from the legs by depressing the outer 4 fanning strips of the S110® wiring base inward to defeat the leg latches. Pull the wiring base away from the legs.

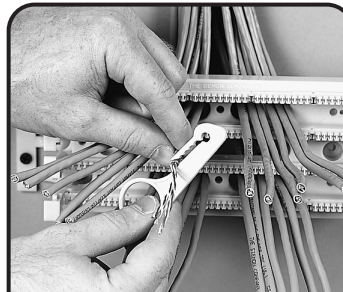


3 With the S110® base removed, route the cable between the legs.

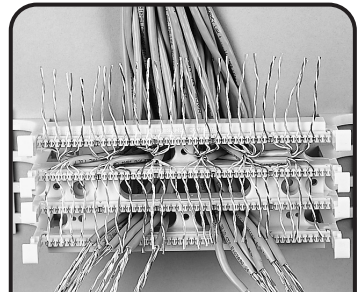


4 Lace the cables through the appropriate openings in the wiring base and snap the S110® wiring base back onto the legs. Push the wiring base onto the legs until the latches “snap” into place.

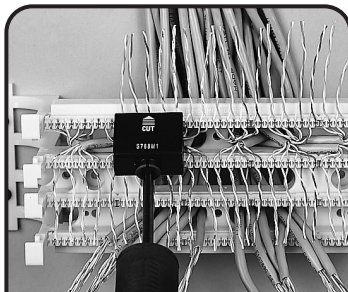
NOTE: For additional security, the assembly can be fastened together using the self-tapping, Phillips-head screws included.



5 Strip back only as much cable jacket as is necessary to terminate the conductors using the Siemon CPT tool or equivalent.

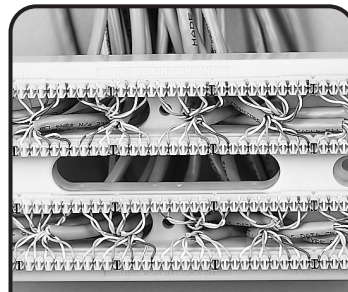


6 Lace the conductors into the S110® wiring base. Pair twist must be maintained to within 12mm (.5") of the point of termination for category 5 installations. Ample channel space is provided to allow jacketed cable to continue close to the point of termination.

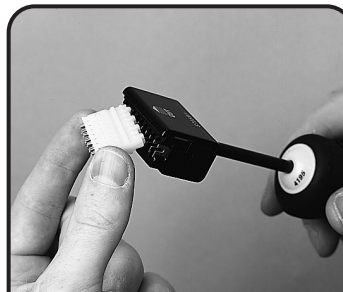


7 Seat the conductors and trim off the excess wire with the cutting edge of the Siemon S788 impact tool or equivalent.

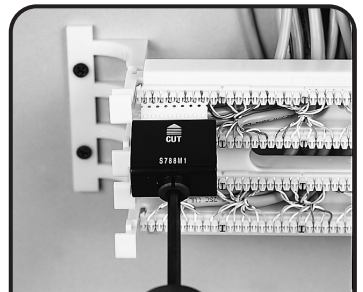
NOTE: Be sure that the cutting edge is properly oriented prior to trimming the wire.



8 Visually inspect the conductor and cable placement at this point to eliminate any miswires or reversals.



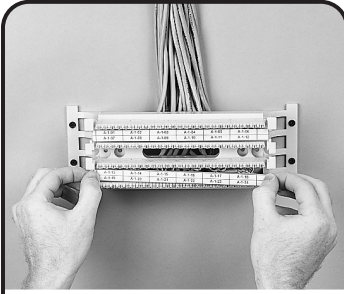
9 Insert a S110C connecting block into the head of a Siemon S788 impact tool.



10 Carefully align the S110C connecting block over the wiring base, with the blue marking to the left side of the block (gray stripe down), and seat the connecting block.

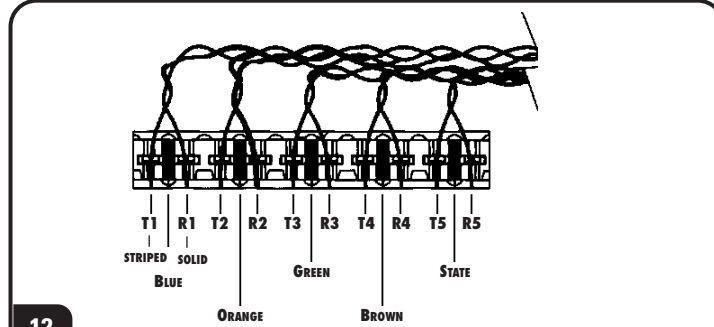
Note: Side stack connecting blocks starting from left side. 4-pair kit includes one 5-pair connecting block for the end of each row to eliminate extra gap.

S110 Wiring Block Instructions



11 Label the circuits then slide the designation strip into the S110-HLDR and snap the holder onto the wiring base. Complete the connections using CJ5 series cross-connect wire or S110P patch cables.

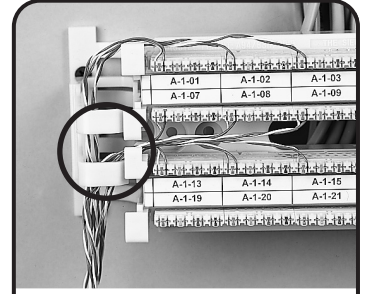
NOTE: Remove designation strips prior to removing base from legs.



12

The S110C connecting block is a double-ended, insulation displacement connector. It should be noted that only 22 through 26 AWG (0.64-0.40mm) insulated wire should be used with this connector.

Once the connecting blocks have been seated and designation strips snapped into place, cross-connection wires can be terminated to the top of the S110C connecting blocks. Arrange wires as shown and terminate using Siemon Company P/N SB14 or S788 impact tool or equivalent. The Siemon S788 impact tool may also be used for both terminating wires to the top of all 110C-type connecting blocks, and for seating connecting blocks. Make sure all conductors have been completely seated into the wire slots and trim any excess wire using the cutting edge of either impact tool.



13

The Siemon S100A2 vertical wire manager can be ordered separately and mounted to the legs of the S110 to provide vertical cable management for S110® patch cords or cross-connect wire.

To assist safe installations, comply with the following:

- A. Use caution when installing or modifying telecommunications circuits.
- B. Never touch uninsulated wire terminals unless the circuit has been disconnected.
- C. Never install this device in a wet location.
- D. Never install wiring during a lightning storm.

Lors de l'installation, respectez les consignes de sécurité suivantes:

- A. Utiliser avec prudence lors de l'installation ou de la modification circuits de télécommunications.
- B. Ne jamais toucher les bornes de fil métallique non isolés sauf si le circuit a été débranché.
- C. Ne jamais installer cet appareil dans un endroit humide.
- D. Ne jamais installer pendant un orage.



Rev. E 2/15 100.4854

Global Headquarters
Watertown, Connecticut USA
Tel: (1) 866-548-5814

For a complete listing of our global offices visit our web site



© 2015 Siemon