



# FiberNOW™

The fiber cabling solutions you need

Ready to ship in 5 days or less



## Available now. Ready to ship.

Hardly what you're used to hearing when it comes to high-performance fiber cabling, right? But that's exactly what the FiberNOW program delivers. Backed by Siemon's innovative manufacturing processes and optimized logistics, FiberNOW delivers the industry's shortest lead times on select fiber cabling and connectivity; with both standard and custom-configured products ready to ship in 5 days or less. Contact your local Siemon representative for more information, or email us at [IMEA\\_customer\\_service@siemon.com](mailto:IMEA_customer_service@siemon.com).

*An example BOM supported by one-week lead time would include up to 25 fiber enclosures, 50 (12 fiber) MTP trunks, 100 (12 fiber) cassettes and 200 jumpers. Lead times on larger orders may be longer. Terms and conditions apply, program available in India, South Asia, Middle East & Africa region, see below for information.*

## LightVerse® Rack-Mount Fiber Enclosures

Max quantity to ship within 5 days after received order: LVE-2U-MD-P01A and LVE-4U-MD-P01A: 10 pieces | All other enclosures - 25 pieces

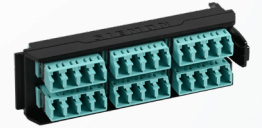
Siemon Base Part Number	Size	Description
LVE-1U-MS-C01A	1U	LightVerse Core, Fixed Panel, Supports 4 LV Adapters, Modules & Splice Cassettes, Black Housing
LVE-1U-MD-T01A	1U	LightVerse Plus, Sliding Drawer, Supports 4 LV Adapters, Modules & Splice Cassettes, Black Housing
LVE-1U-MD-P01A	1U	LightVerse Pro, Sliding Drawer, Supports 4 LV Adapters, Modules & Splice Cassettes, Black Housing
LVE-2U-MD-P01A	2U	LightVerse Pro, Sliding Drawer, Supports 8 LV Adapters, Modules & Splice Cassettes, Black Housing
LVE-4U-MD-P01A	4U	LightVerse Pro, Sliding Drawer, Supports 16 LV Adapters, Modules & Splice Cassettes, Black Housing



## LightVerse LC Fiber Adapter Plates

Max quantity to ship within 5 days after received order: 150 adapter plates

Siemon Base Part Number	Fiber Count	Description
LVA12-LCQ-BC-A	12	LightVerse LC, Aqua Adapters, Ceramic Sleeve
LVA12-LCU-BC-A	12	LightVerse LC, Blue Adapters, Ceramic Sleeve
LVA24-LCQ-BC-A	24	LightVerse LC, Aqua Adapters, Ceramic Sleeve
LVA24-LCU-BC-A	24	LightVerse LC, Blue Adapters, Ceramic Sleeve



## LightVerse Fiber MTP-to-LC Modules

Max quantity to ship within 5 days after received order: 12F - 100 pieces, 24F - 50 pieces

Siemon Base Part Number	Fiber Count	Description
LVM12TFLSV-BSUA	12	LightVerse Shuttered LC, Aqua, to MTP-F, Aqua, Standard Loss, OM4, Universal Polarity (U1), Base 12
LVM12TFLSV-BLUA	12	LightVerse Shuttered LC, Aqua, to MTP-F, Aqua, Ultra Low Loss, OM4, Universal Polarity (U1), Base 12
LVM12TFLSU-BSUA	12	LightVerse Shuttered LC, Blue, to MTP-F, Black, Standard Loss, SM, Universal Polarity (U1), Base 12
LVM12TFLSU-BLUA	12	LightVerse Shuttered LC, Blue, to MTP-F, Black, Ultra Low Loss, SM, Universal Polarity (U1), Base 12
LVM24TFLSV-BSUA	24	LightVerse Shuttered LC, Aqua, to MTP-F, Aqua, Standard Loss, OM4, Universal Polarity (U1), Base 12
LVM24TFLSV-BLUA	24	LightVerse Shuttered LC, Aqua, to MTP-F, Aqua, Ultra Low Loss, OM4, Universal Polarity (U1), Base 12
LVM24TFLSU-BSUA	24	LightVerse Shuttered LC, Blue, to MTP-F, Black, Standard Loss, SM, Universal Polarity (U1), Base 12
LVM24TFLSU-BLUA	24	LightVerse Shuttered LC, Blue, to MTP-F, Black, Ultra Low Loss, SM, Universal Polarity (U1), Base 12
LVM24EFLSV-BSUA	24	LightVerse Shuttered LC, Aqua, to MTP-F, Gray, Standard Loss, OM4, Universal Polarity (U1), Base 8
LVM24EFLSV-BLUA	24	LightVerse Shuttered LC, Aqua, to MTP-F, Gray, Ultra Low Loss, OM4, Universal Polarity (U1), Base 8
LVM24EFLSU-BSUA	24	LightVerse Shuttered LC, Blue, to MTP-F, Black, Standard Loss, SM, Universal Polarity (U1), Base 8
LVM24EFLSU-BLUA	24	LightVerse Shuttered LC, Blue, to MTP-F, Black, Ultra Low Loss, SM, Universal Polarity (U1), Base 8



## LightVerse Splice Cassettes

Max quantity to ship within 5 days after received order: 12F - 100 pieces, 24F - 50 pieces

Siemon Base Part Number	Fiber Count	Description
LVS12-LSPVLAB1A	12	LightVerse Shuttered LC, Aqua, 900µm, OM4
LVS12-LSUALAB1A	12	LightVerse Shuttered LC, Blue, 900µm, SM
LVS24-LSPVLAB1A	24	LightVerse Shuttered LC, Aqua, 900µm, OM4
LVS24-LSUALAB1A	24	LightVerse Shuttered LC, Blue, 900µm, SM



## Duplex LC-to-LC Jumpers

Max quantity to ship within 5 days after received order: 200 pieces

Siemon Base Part Number	Fiber Count	Fiber Type	Description
FJ2-LCULCUL-01H	2	OS1/OS2	Fiber Jumper, Duplex, XGLO, Singlemode, LC UPC, LC UPC, OS1/OS2, 8.3/125, Yellow, LSOH-3C, 1 meter
FJ2-LCULCUL-02H	2	OS1/OS2	Fiber Jumper, Duplex, XGLO, Singlemode, LC UPC, LC UPC, OS1/OS2, 8.3/125, Yellow, LSOH-3C, 2 meter
FJ2-LCULCUL-03H	2	OS1/OS2	Fiber Jumper, Duplex, XGLO, Singlemode, LC UPC, LC UPC, OS1/OS2, 8.3/125, Yellow, LSOH-3C, 3 meter
FJ2-LCULCUL-05H	2	OS1/OS2	Fiber Jumper, Duplex, XGLO, Singlemode, LC UPC, LC UPC, OS1/OS2, 8.3/125, Yellow, LSOH-3C, 5 meter
FJ2-LCLC5V-01AH	2	OM4	Fiber Jumper, Duplex, XGLO, Multimode, LC, LC, OM4, 50/125, Aqua, LSOH-3C, 1 meter
FJ2-LCLC5V-02AH	2	OM4	Fiber Jumper, Duplex, XGLO, Multimode, LC, LC, OM4, 50/125, Aqua, LSOH-3C, 2 meter
FJ2-LCLC5V-03AH	2	OM4	Fiber Jumper, Duplex, XGLO, Multimode, LC, LC, OM4, 50/125, Aqua, LSOH-3C, 3 meter
FJ2-LCLC5V-05AH	2	OM4	Fiber Jumper, Duplex, XGLO, Multimode, LC, LC, OM4, 50/125, Aqua, LSOH-3C, 5 meter



## BladePatch® LC-to-LC Duplex Jumpers

Max quantity to ship within 5 days after received order: 200 pieces

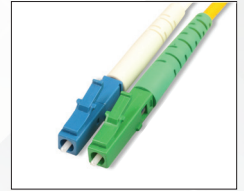
Siemon Base Part Number	Fiber Count	Fiber Type	Description
LBP-LCULCUL-01H	2	OS1/OS2	Fiber Jumper, Duplex, XGLO, Singlemode, LC BladePatch UPC, LC BladePatch UPC, RFP, OS1/OS2, 8.3/125, Yellow, LSOH-3C, 1 meter
LBP-LCULCUL-02H	2	OS1/OS2	Fiber Jumper, Duplex, XGLO, Singlemode, LC BladePatch UPC, LC BladePatch UPC, RFP, OS1/OS2, 8.3/125, Yellow, LSOH-3C, 2 meter
LBP-LCULCUL-03H	2	OS1/OS2	Fiber Jumper, Duplex, XGLO, Singlemode, LC BladePatch UPC, LC BladePatch UPC, RFP, OS1/OS2, 8.3/125, Yellow, LSOH-3C, 3 meter
LBP-LCULCUL-05H	2	OS1/OS2	Fiber Jumper, Duplex, XGLO, Singlemode, LC BladePatch UPC, LC BladePatch UPC, RFP, OS1/OS2, 8.3/125, Yellow, LSOH-3C, 5 meter
LBP-LCLC5V-01AH	2	OM4	Fiber Jumper, Duplex, XGLO, Multimode, LC BladePatch, LC BladePatch, RFP, OM4, 50/125, Aqua, LSOH-3C, 1 meter
LBP-LCLC5V-02AH	2	OM4	Fiber Jumper, Duplex, XGLO, Multimode, LC BladePatch, LC BladePatch, RFP, OM4, 50/125, Aqua, LSOH-3C, 2 meter
LBP-LCLC5V-03AH	2	OM4	Fiber Jumper, Duplex, XGLO, Multimode, LC BladePatch, LC BladePatch, RFP, OM4, 50/125, Aqua, LSOH-3C, 3 meter
LBP-LCLC5V-05AH	2	OM4	Fiber Jumper, Duplex, XGLO, Multimode, LC BladePatch, LC BladePatch, RFP, OM4, 50/125, Aqua, LSOH-3C, 5 meter



## LC Pigtail

Max quantity to ship within 5 days after received order: 200 pieces

Siemon Base Part Number	Description
FP1B-LC5V-01AH	Fiber, Pigtail, Simplex, 900um Buffered, XGLO, Multimode, LC, OM4, 50/125, Aqua, LSOH-3C, 1 meter
FP1B-LCUL-01H	Fiber, Pigtail, Simplex, 900um Buffered, XGLO, Singlemode, LC UPC, OS1/OS2, 8.3/125, Yellow, LSOH-3C, 1 meter



## Plug and Play Base-12 MTP-to-MTP Fiber Trunks

Base-12 MTP-to-MTP RazorCore™ Fiber Trunks, LSOH

Max quantity to ship within 5 days after received order: 100 x MTP Connectors. Ex. 50 x 12F MTP-to-MTP Trunks or 25 x 24F MTP-to-MTP Trunks

F(X)(XX)(X)-(XX)L(XXX)(X)-(X)

### Configuration

R = Standard Loss  
L = Ultra Low Loss

### Fiber Count

12 = 12  
24 = 24

### Gender

Blank = Unpinned  
M = Pinned (recommended)

### Polarity Method

A = Method A  
B = Method B (recommended)  
C = Method C

### Length Unit

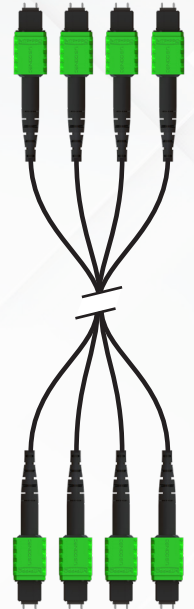
F = Feet  
M = Meters

### Length

Must be 3 digits  
Example:  
003 = 3m  
010 = 10ft

### Fiber Type

5V = OM4, XGLO 550 50/125 Multimode, Aqua  
SM = OS1/OS2, Singlemode, Yellow



## Plug and Play Base-8 MTP-to-MTP Fiber Trunks

Base-8 MTP-to-MTP RazorCore Fiber Trunks, LSOH

Max quantity shipped within 5 days after received order: 100 x MTP connectors. Ex. 50 x 8F MTP-to-MTP Trunks or 16 x 24F MTP-to-MTP Trunks

G(X)(XX)(X)(XX)L(XXX)(X)-(X)

### Performance

R = Standard Loss  
L = Ultra-Low Loss

### Fiber Count

8 = 8  
24 = 24

### Gender

- = Unpinned  
M = Pinned (recommended)

### Polarity Method

A = Method A  
B = Method B (recommended)  
C = Method C

### Length Unit

F = Feet  
M = Meters

### Length

Must be 3 digits  
Example:  
003 = 3m  
010 = 10ft

### Fiber Type

5V = OM4, XGLO 550 50/125 Multimode, Aqua  
SM = OS1/OS2, Singlemode, Yellow



## 8F Base-8 MTP-to-MTP Jumpers Using MTP Pro Connectors

Base-8 MTP Pro-to-MTP Pro RazorCore Fiber Jumpers, 2mm (0.079 in.), LS0H  
 Max quantity to ship within 5 days after received order: 50 pieces

GJ(X)P(X)L(X)(X)-(XXX)(X)-(X)

### Performance

S = Standard Loss  
 L = Low Loss

### Polarity Method

A = Method A  
 B = Method B  
 C = Method C

### Fiber Type

V = OM4, XGLO 550 50/125 Multimode, Aqua  
 A = OS1/OS2, Singlemode, Yellow

### Side A

M = Pinned  
 F = Unpinned (recommended)

### Length Unit

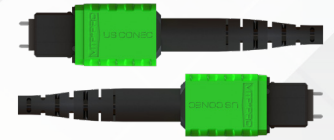
F = Feet  
 M = Meters

### Length

Must be 3 digits  
**Example:**  
 003 = 3m  
 010 = 10ft

### Side B

M = Pinned  
 F = Unpinned (recommended)



## MTP-to-LC Trunks

Base-8 MTP-to-LC RazorCore Fiber Trunks, LS0H  
 Max quantity to ship within 5 days after received order: 100 pieces

T(X)NC(XX)(X)(XX)LC(XXX)(X)

### Performance

F = Standard Loss  
 L = Ultra Low Loss

### Length Unit

F = Feet  
 M = Meters

### Strand Count

N = 8 Fibers

### Length

Length Must be 3 digits  
**Example:**  
 003 = 3m  
 010 = 10ft

### Pilling Eye Option

C = None

### Side A MTP (8 Core)

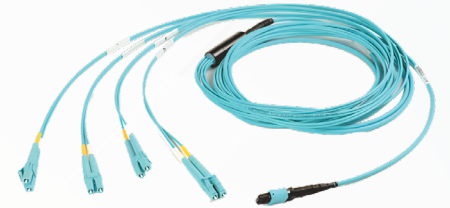
MM = Pinned  
 MF = Unpinned

### Fiber Type

5V = OM4, XGLO 550 50/125 Multimode Aqua  
 SM = OS1/OS2, Singlemode Yellow

### Jacket Rating

L = LS0H



### Terms and Conditions

- Program available in India, South Asia, Middle East & Africa region.
- PO must be received by 2PM IST.
- Standard freight policy applies.
- Ready to ship within 5 days of booking of PO by Siemon customer service.
- Targeted to ship max order quantities within 5 days after the customer submits a purchase order. Lead time may vary based on availability. Customer Service will advise lead times.
- T&C might change due to prevailing market conditions, however, Siemon customer service will keep you updated.

Because we continuously improve our products, Siemon reserves the right to change specifications and availability without prior notice.

**North America**  
 P: (1) 860 945 4200

**Asia Pacific**  
 P: (61) 2 8977 7500

**Latin America**  
 P: (571) 657 1950/51/52

**Europe**  
 P: (44) 0 1932 571771

**China**  
 P: (86) 215385 0303

**India, Middle East & Africa**  
 P: (971) 4 3689743

**Siemon Interconnect Solutions**  
 P: (1) 860 945 4213  
 www.siemon.com/SIS

**Mexico**  
 P: (521) 556 387 7708/09/10