



LightVerse[®]

Unlock a Universe of Possibilities for your Network

LightVerse enables your data center or enterprise network to get operational quicker with higher reliability and enhanced installation flexibility. Using LightVerse in any network setting empowers you to protect your investment for today and tomorrow. Enjoy a sleek, world-class appearance designed specifically for your technology showcase environments. Unlock the potential of your high-density fiber connectivity installations, with a system that delivers the performance, flexibility, and scalability you need now and in the future.



LIGHTVERSE DELIVERS



Superior Flexibility

A wide range of enclosure sizes with a variety of modular components.



Future-Proof Design

Protecting your network investment for future generations.



Easy Installation

LightVerse requires only one person for installation.

INNOVATIVE FIBER SOLUTIONS, FOR NOW AND FOR THE FUTURE



Combining Various Fiber Termination Technologies

Including transition modules, pass-through adapters and splice termination options paired with our Plug and Play trunks and our industry leading BladePatch® LC duplex jumpers – LightVerse is the ideal solution for all your fiber optic needs.

Packed with Features and Time Saving Benefits

LightVerse provides the perfect balance of usability in a way the industry has never seen before, allowing for fiber density that is equal for all termination types including patching, splice, and conversion.

Multiple Options to Suit Your Specific Needs

The LightVerse system is a truly end-to-end range of fiber management solutions featuring 1U, 2U, & 4U enclosures with built-in front and rear cable management supporting up to 96-fiber terminations of any type per rack unit.

LightVerse®



LightVerse Pro 2U Enclosure

1. Up to 96 Fibers in 1U Space

Fiber density is the same for all termination types, balancing density and accessibility.

2. White Sliding Tray

The white colored tray makes for easier inspection of connections within a dark enclosure.

3. Molded Front Cable Managers

Capable of managing all 96 fibers on one or both sides, providing maximum flexibility.

4. Enclosure Mounting Brackets

These brackets are designed to interoperate with any standard cabinet or open rack.

5. Integrated Label Holder

Neatly stored away in the bottom of the tray, the integrated label holder is easily accessible to track and identify all ports.

6. Scratch Resistant Doors

Sleek, smoked finish, scratch resistant doors give your data center a true state-of-the-art feel.

www.siemon.com/lightverse

ENGINEERED FOR EXCELLENCE

BEAUTIFUL BY DESIGN

LightVerse® not only looks state-of-the-art, it is state-of-the-art. With sleek, molded plastic components, scratch-resistant transparent doors, and a high-quality steel enclosure, LightVerse is designed to support your network needs and looks good doing it.

LightVerse is also the industry's first truly 400G-ready solution and has been third-party verified by Intertek to its exacting standards.

Available with ultra-low loss connectivity and support for multiple industry recognized polarity schemes, LightVerse modules and adapter plates combine with Siemon's award-winning line of Plug and Play trunks, traditional LC duplex jumpers, and innovative LC BladePatch® fiber jumpers to deliver a complete end-to-end ecosystem that unlocks the potential of your high-density fiber installations in data center and LAN spaces.

Are you looking for industry leading performance as a standard?
Think LightVerse.

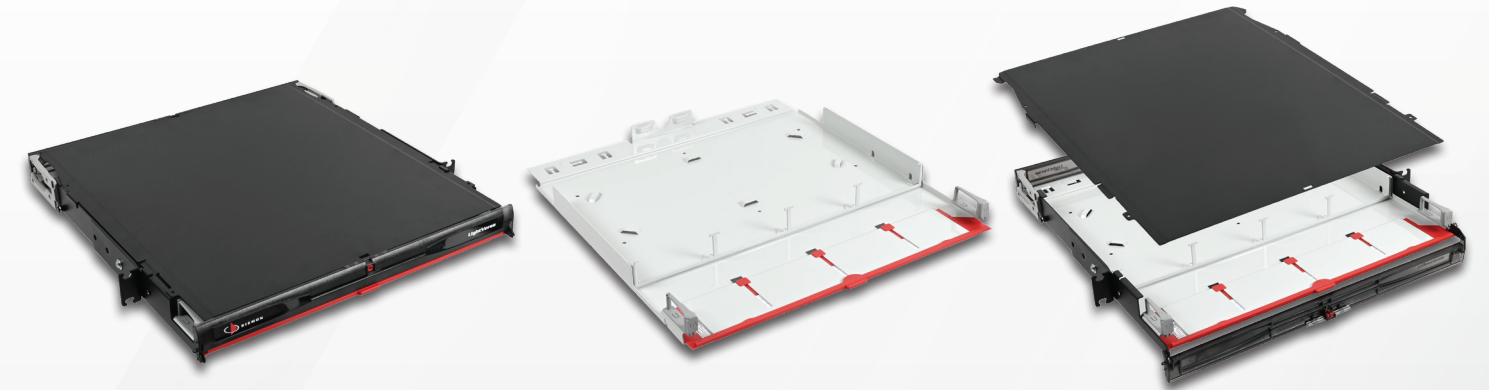
intertek
Total Quality. Assured.



WHICH OPTION IS RIGHT FOR YOUR NEEDS?

The range builds from our LightVerse Core model, designed to support your everyday networking requirements, to our LightVerse Plus model, offering more flexibility within your network, through to the fully featured LightVerse Pro that includes a sliding tray, integrated label holder, cable management and more, making it ideal for resolving your more complex challenges.

| | LightVerse Core | LightVerse Plus | LightVerse Pro |
|--|-----------------|-----------------|----------------|
| Robust steel construction | ● | ● | ● |
| Mix and match termination types | ● | ● | ● |
| Fixed tray | ● | | |
| Sliding tray | | ● | ● |
| 96 fibers in 1U | ● | ● | ● |
| 2U/8 slot & 4U/16 slot chassis | | | ● |
| Integrated label holder | | ● | ● |
| Front cable managers | | ● | ● |
| Rear cable management | | ● | ● |
| Removable top cover | ● | | ● |
| Enhanced rear cable management system | | | ● |
| Clear, scratch resistant, front door | | | ● |
| Tamper proof latching front and rear doors | | | ● |



Versatile Sliding Tray

The high-contrast white sliding tray aids with visibility in dark spaces and supports 2 stop locations. The tray can also be fully removed if needed to better support splicing applications.

Flexible Cable Management

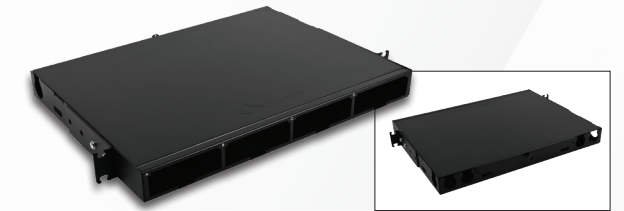
Each LightVerse enclosure includes integrated front cable managers and optional rear clips, which allow users to easily manage their fiber jumpers from a variety of access points.

Simplified Installation

The enclosures feature slotted holes on the bottom of the enclosure which reduce weight and improve airflow, resulting in an enclosure that can still be installed by one person, even the 4U.

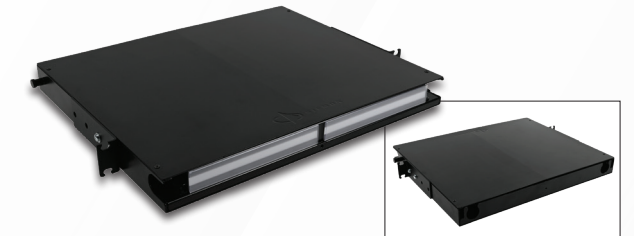
LightVerse Core

| Part Number | Description |
|----------------|--|
| LVE-1U-MS-C01A | 1U, Fixed panel, Modular mount, 4 adapter plate openings |



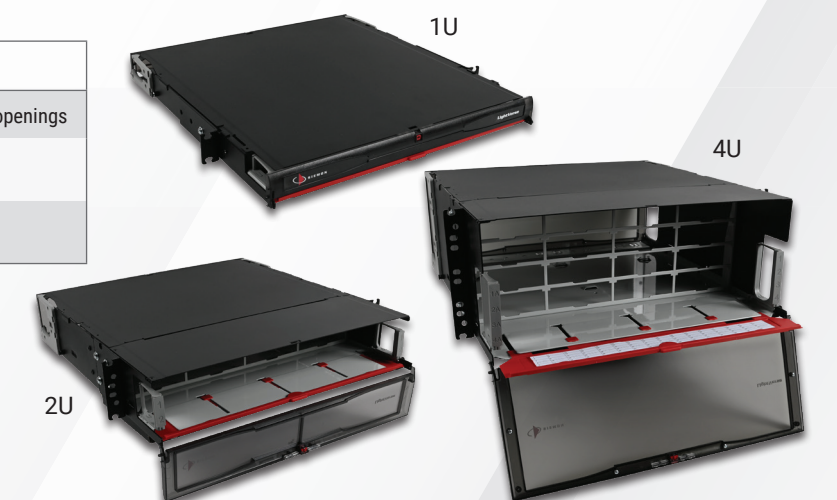
LightVerse Plus

| Part Number | Description |
|----------------|---|
| LVE-1U-MD-T01A | 1U, Sliding drawer, Modular mount, 4 adapter plate openings |



LightVerse Pro

| Part Number | Description |
|----------------|--|
| LVE-1U-MD-P01A | 1U, Sliding drawer, Modular mount, 4 adapter plate openings |
| LVE-2U-MD-P01A | 2U, Sliding drawer, Modular mount, 8 adapter plate openings |
| LVE-4U-MD-P01A | 4U, Sliding drawer, Modular mount, 16 adapter plate openings |

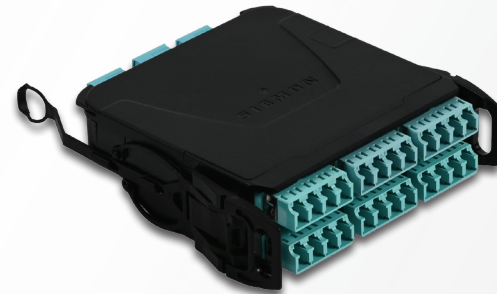


LIGHTVERSE TERMINATION OPTIONS

LightVerse has a wide array of transition modules, pass-through adapters, and splice termination options that allow users to mix-and-match them to support their unique network needs. These accessories combine with our award-winning line of Plug and Play trunks, traditional LC duplex jumpers and innovative LC BladePatch® fiber jumpers to deliver a truly exceptional connectivity experience suitable for every type and scale of data center environment.

Plug and Play Modules

The LightVerse Plug and Play modules are designed to interoperate with any of the systems' enclosures or panels. They can be installed from both the front or the rear of the enclosure or panel and are available in both singlemode and multimode configurations.

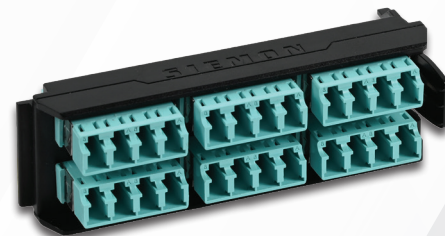


LVM (XX) (X) (X) (XX) (X) - B (X) (X) A

| FIBER COUNT | BASE | PINNING | CONNECTOR | MODE | PERFORMANCE | POLARITY |
|--------------------|----------------------------|----------------------------|--------------------------------------|---|---|---|
| 12 = 12 24 = 24 | E = Base-8* T = Base-12 | F = Unpinned M = Pinned | LC = Non Shuttered LS = Shuttered | L = OM3 (LC/Aqua - MTP/Aqua) V = OM4 (LC/Aqua - MTP/Aqua) E = OM4 (LC/Erika Violet - MTP/ Erika Violet) U = LC/UPC, MTP/APC (LC/Blue - MTP/Black) A = LC/APC, MTP/APC (LC/Green - MTP/Black) | S = Standard Loss L = Ultra-Low Loss | C = Polarity A&C U = U1 Universal Polarity** |

Adapter Plates

LightVerse adapter plates are available in a wide range of configurations and support a variety of connector types including: LC, shuttered LC, MTP, SC, FC, ST, and MT. This variety allows users to easily mix and match different fiber adapter plates to best fit their application requirements.



LightVerse LC Adapter Plate
Black with ceramic sleeve

LVA (XX) - (XX) (X) - BC - A

| FIBER COUNT | CONNECTOR | MODE |
|-------------------------------|--|--|
| 12 = 12 16 = 16 24 = 24 | LC = Non Shuttered LS = Shuttered | E = Erika Violet Q = Aqua U = Blue A = Green P = Beige |

LightVerse MTP Adapter Plate
Black

LVA (XX) - MP (X) - BN - A

| PORTS* | MODE |
|---|---|
| M1 = 1 Port M2 = 2 Port M4 = 4 Port M6 = 6 Port M8 = 8 Port | B = Black (Type - A, key up to key down) E = Erika Violet (Type - A, key up to key down) Q = Aqua (Type - A, key up to key down) G = Gray (Type - B, key up to key up) |

LightVerse SC Adapter Plate
Black with metal sleeve

LVA (XX) - SC (X) - B (X) - A

| FIBER COUNT | MODE | SLEEVE |
|-------------------------------|----------------------------------|--|
| 06 = 06 08 = 08 12 = 12 | Q = Aqua B = Black (SM/MM) | M = Metal C = Ceramic (Green/APC only) |

LightVerse FC Adapter Plate
Black with metal sleeve

| Part Number | Description |
|----------------|---------------------------------------|
| LVA06-FCM-BM-A | MM and SM UPC (Phos Bronze Sleeve) |

LightVerse ST Adapter Plate
Black with metal sleeve

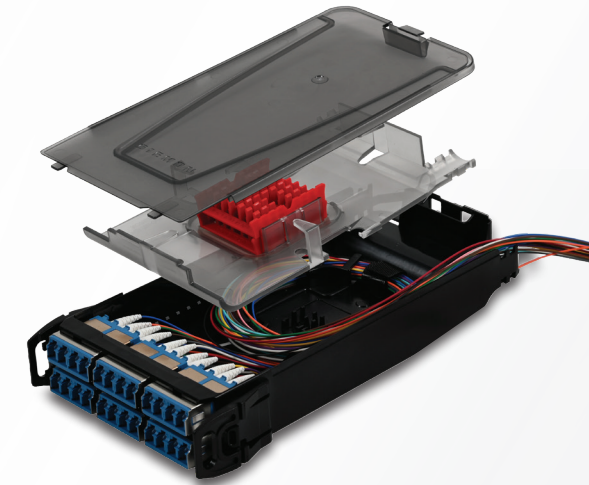
| Part Number | Description |
|----------------|------------------------------|
| LVA06-STB-BM-A | Black ST Adapter (SM/ MM) |

LightVerse Blank Adapter Plate

| Part Number | Description |
|---------------|---------------------|
| LVA-BLANK-01A | Blank Adapter Plate |

Splice Cassettes

The LightVerse splice cassettes are constructed from a translucent material making testing and verification easier and have a pull tether for quick removal. All splice cassettes arrive pre-loaded with adapters allowing faster on-site deployment.



LightVerse LC Splice Cassette

Black with ceramic sleeve

LVS (XX) - (XX) (XX) (X) (X) B1A

| FIBER COUNT | CONNECTOR | FIBER TYPE | BUFFER RATING | FIBER CONSTRUCTION |
|--|--------------------------------------|--|---|---|
| 12 = 12 Fibers 16 = 16 Fibers 24 = 24 Fibers | LC = Non Shuttered LS = Shuttered | P6 = Beige OM1 PL = Aqua OM3 PV = Aqua OM4 PE = Erika Violet OM4 UA = Blue OS2 (UPC) AA = Green OS2 (APC) | R = Riser L = LS0H E = Empty (no fiber) | A = 900um B = Ribbon Side 1 C = Ribbon Side 2 E = Empty (no fiber) |

LightVerse SC Splice Cassette

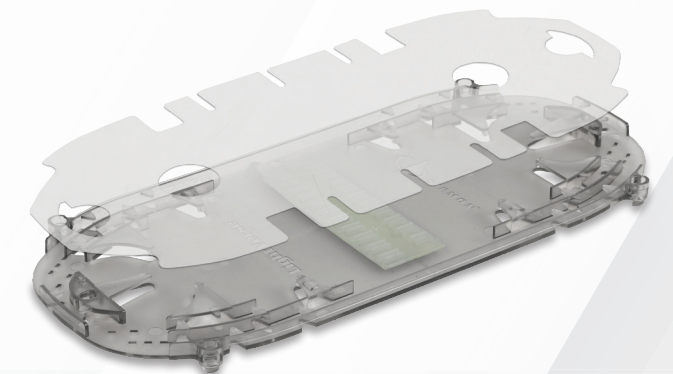
Black with metallic sleeve

LVS (XX) - SC (XX) (X) (X) B1A

| FIBER COUNT | FIBER TYPE | BUFFER RATING | FIBER CONSTRUCTION |
|--|--|---|-----------------------------------|
| 06 = 6 Fibers 08 = 8 Fibers 12 = 12 Fibers | P6 = Black OM1* PL = Aqua OM3 PV = Aqua OM4 UA = Blue OS2 (UPC) AA = Green OS2 (APC) | R = Riser L = LS0H E = Empty (no fiber) | A = 900um E = Empty (no fiber) |

Splice Trays

This revolutionary design allows for a 1-to-1 ratio of splices to connectors, holding 96 splices and connectors in 1U. Trays are also stackable up to 16 times within the 4U LightVerse enclosure, providing maximum space savings.



LightVerse Splice Tray

| Part Number | Description |
|--------------|--|
| TRAYHD-1-A | Splice Tray, Single Splice, 24 Splices |
| TRAY-4-R-MFS | Splice Tray, Mass or Ribbon, 6 Splices |

LightVerse Splice Tray Accessories


| Part Number | Description |
|-------------|--------------------------------------|
| HT-40 | 40mm single fiber heat shrink sleeve |
| HT-60 | 60mm single fiber heat shrink sleeve |



HT-40



HT-60



“ While we will eventually transition everything in the colocation and our on-prem spaces to LightVerse, we still have three generations of Siemon fiber enclosures in use in the meantime. We really like that we can easily migrate using the same assemblies and continue to do our fiber patching with Siemon’s LC BladePatch jumpers where changing polarity is so simple. That’s important for us since we have two teams that use different polarity methods. ”

— Andre DaBreo
Network Engineer at Wellstar Health System

WITH SIEMON FIBER, YOU DON'T HAVE TO COMPROMISE.

At Siemon, we don't believe that our customers should settle when it comes to their optical performance. That's why we've developed our plug and play solutions in line with the most stringent industry standards, which allows our customers to have peace of mind that they will have the flexibility they need over a range of distances and configurations, all while remaining within their loss budget.

Our Best Is Better

We like to keep things simple, so we only provide two performance options.

1. Our **Standard Loss** components are in line with many other industry leaders' "low loss" offerings, which means that our standard is the same as their "best".
2. Our **Ultra-Low Loss (ULL)** components offer the pinnacle of performance and provide you with the ideal foundation to support high bandwidth, low latency applications.

START YOUR LIGHTVERSE JOURNEY TODAY!



For more information visit:
[siemon.com/LightVerse](https://www.siemon.com/LightVerse)



Find your local Siemon distributor:
go.siemon.com/LVDistributor



24/7 Customer Support:
customer_service@siemon.com

www.siemon.com/lightverse

BRC_LightVerse_Region_APAC_China_JMEA_ERCA_RevA 6/22

