

Z-MAX™ 6A SHIELDED MODULAR CORDS

The Z-MAX patch cord is a primary driver of the Z-MAX systems' exceptional performance. The Z-MAX smart plug design features a printed circuit board (PCB), normally only found in outlets, to achieve high performance tuning. The PCB also allows the incorporation of advanced contact technology to provide decreased variability and greater reliability over traditional crimp-type plugs.

Combined with fully shielded alien crosstalk resistant cable construction and a host of innovative, user-friendly features, the shielded Z-MAX 6A modular cords are the ultimate category 6A cord.



PATENT PENDING



Z-MAX™

PATCH CORDS, PLUGS & CABLE

Stranded modular cords feature category 7A S/FTP stranded cable for optimal transmission performance while effectively eliminating alien crosstalk

Boots feature an ultra slim design for high-density applications

Internal -PCB based rear contacts eliminate pair splitting and crossing to maintain cable pair geometry

Patent pending PCB-based smart plug optimizes signal tuning for consistent, exceptional transmission performance

Terminating pairs to the rear contacts on the PCB reduces the amount of pair untwisting, improving performance and consistency

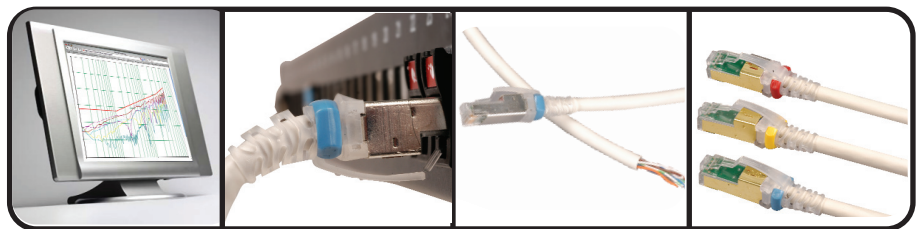
360 degree shield coverage for exceptional shielding effectiveness

STANDARDS COMPLIANCE

- ANSI/TIA-568-B.2-10
- ISO/IEC 11801:2002 Amendment 1 (Class E_A)
- IEEE 802.3an (10Gbase-T)
- IEEE 802.3af (PoE)
- IEEE 802.3at (PoE+)
- IEC 60603-7
- UL Listed 1863
- TIA-968-A (formerly FCC Part 68 Subpart F)

Front contacts are preterminated to the -PCB, eliminating variable contact heights due to crimping

Fixed-position front contacts ensure plug quality and consistent mating with outlets



Cords are 100% transmission tested to ensure compliance with applicable standards requirements

Boot and integrated strain relief ensures proper bend relief, critical for category 6A performance

Solid Z-MAX 6A cords are available for consolidation point or cross-connect applications

Optional colored clips enable field color coding even when cords are connected

CONNECTING THE WORLD TO A HIGHER STANDARD

WWW.SIEMON.COM



PRODUCT INFORMATION

Performance Specifications:

| ELECTRICAL | |
|--------------------------------------------------------|-----------------------------------------|
| Contact Resistance | 10 mΩ |
| Input to Output Resistance | 200 mΩ |
| Min. Dielectric Withstand Voltage (contact to contact) | 1000 V DC or AC peak |
| Insulation Resistance | 500 mΩ |
| Compatibility | Backwards to cat 5e and cat 6 |
| Current Rating | 1.5 A |
| PoE | Suitable for PoE and PoE+ |
| Surface Transfer Impedance | < 10 mΩ/m @ 10 MHz |
| MECHANICAL – GENERAL | |
| Operating Temperature | -10 to 60 °C, (14 to 140 °F) |
| Flammability Rating | UL 94 V-0 |
| Green Features | RoHS, lead-free, halogen-free, PVC free |
| Plug Housing Material | Polycarbonate |
| Contact Materials | 50 microns gold plating or equivalent |
| Plastic Materials | Flame retardant thermoplastic |
| Screen | 360 degree enclosure |
| Marking | P/N, length, performance level, QC |
| MECHANICAL – PLUG | |
| Number of Plug Insertion Cycles | 2500 |
| Min. Plug Retention Force | 50N |
| Plug Compatibility | Compatible with RJ45 outlets |
| Cable to Plug Tensile Strength (min) | 20 lbs |

| MECHANICAL – CABLE (STRANDED) | |
|-------------------------------|------------------------------------|
| Wire Size Range (nominal) | 26 AWG 7x32 Stranded tinned copper |
| Cable Construction | S/FTP |
| Cable O.D. (nominal) | 6.35mm (0.25 in.) |
| Wiring | T568A/B |
| Jacket Type | LSOH |
| Bend Radius | 50mm (2.0 in.) |

| MECHANICAL – CABLE (SOLID) | |
|----------------------------|-------------------------------|
| Wire Size Range (nominal) | 23 AWG 7x32 Solid bare copper |
| Cable Construction | F/UTP |
| Cable O.D. (nominal) | 7.37mm (0.29 in.) |
| Wiring | T568A/B or T568B |
| Jacket Type | CMR or CMP |
| Bend Radius | 50mm (2.0 in.) |



Z-MAX™ 6A Shielded Stranded (S/FTP) Modular Cords:

ZM6A-S(XX)-XX Z-MAX 6A shielded double ended stranded modular cord, colored jacket with clear boot, T568A/B, LSOH,

Use 1st (XX) to specify cord length:
03 = 0.9m (3 ft.), 05 = 1.5m (5 ft.), 07 = 2.1m (7 ft.),
10 = 3.1m (10 ft.), 15 = 4.6m (15 ft.), 20 = 6.1m (20 ft.)

Use 2nd (XX) to specify color:
01 = black, 02 = white, 03 = red, 04 = gray, 05 = yellow,
06 = blue, 07 = green, 09 = orange

Ⓢ Add "B" for bulk project pack of 100 modular cords

Color Coding Clips:

CLIP-(XX) Color coding clip, bag of 25

Use (XX) to specify color: 01=black, 02=white, 03=red,
04=gray, 05=yellow, 06=blue, 07=green, 09 = orange



Because we continuously improve our products, Siemon reserves the right to change specifications and availability without prior notice.

Z-MAX™ is a trademark of Siemon

The Americas

Watertown, CT USA
Phone (1) 860 945 4200 US
Phone (1) 888 425 6165 Canada

Europe/Middle East/Africa

Surrey, England
Phone (44) 0 1932 571771

Asia/Pacific

Shanghai, P.R. China
Phone (86) 21 6390 6778

Central & South America

Bogota, Colombia
Phone (571) 317 2121

Z-MAX 6A Shielded Solid (F/UTP) Modular Cords:

ZC6A-S(XX)A-R Z-MAX 6A shielded, single-ended solid modular cord, blue jacket with clear boot, T568B, CMR

ZC6A-S(XX)T-R Z-MAX 6A shielded, single-ended solid modular cord, blue jacket with clear boot, T568A, CMR

ZC6A-S(XX)A-P Z-MAX 6A shielded, single-ended solid modular cord, blue jacket with clear boot, T568B, solid modular cord, CMP

ZC6A-S(XX)T-P Z-MAX 6A shielded, single-ended solid modular cord, blue jacket with clear boot, T568A, CMP

Use (XX) to specify cord length:

10 = 3.1m (10 ft.), 20 = 6.1m (20 ft.), 30 = 9.1m (30 ft.),
40 = 12.2m (40 ft.), 50 = 15.2m (50 ft.), 60 = 18.3m (60 ft.)

For additional resource information:

Visit our web site at www.siemon.com