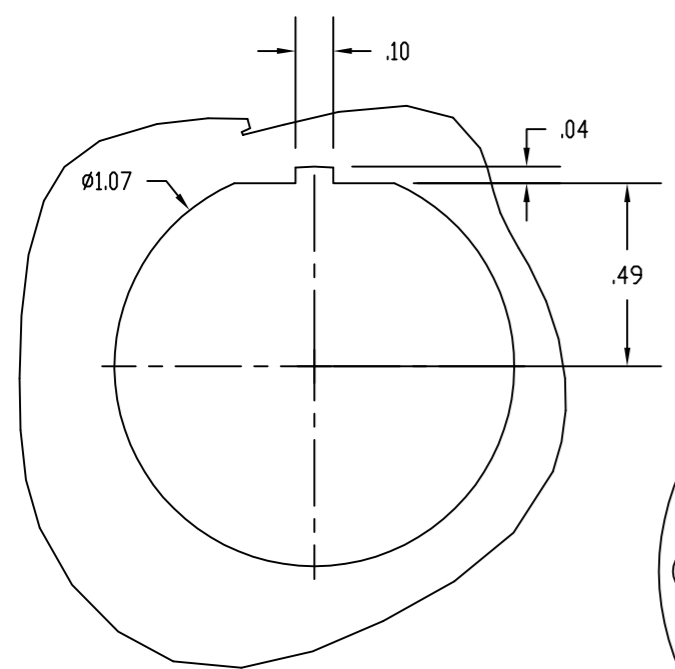
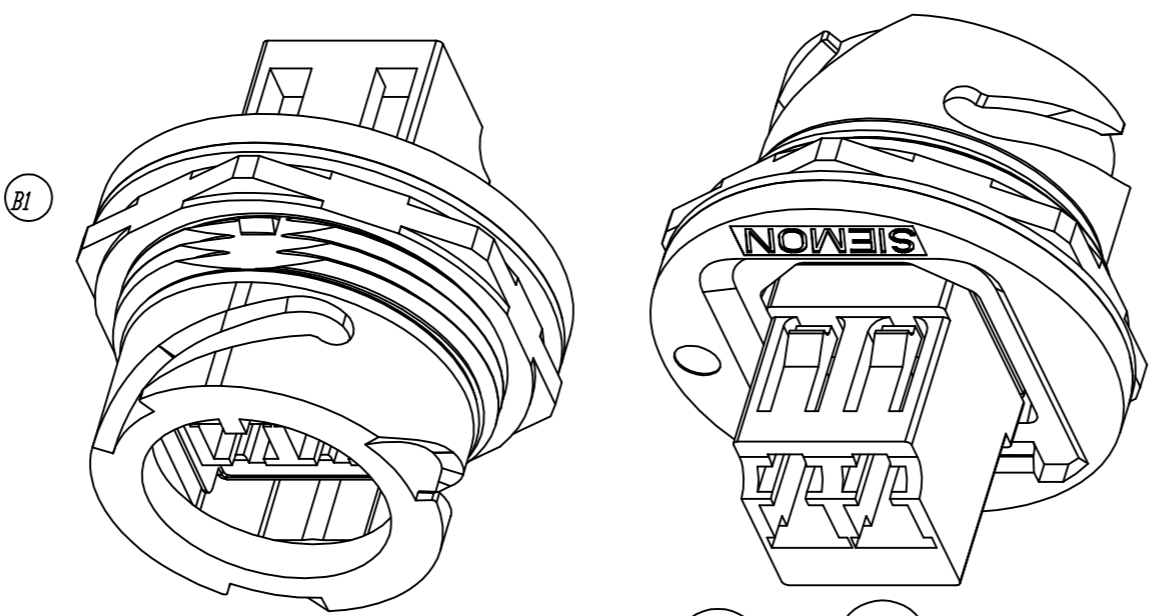
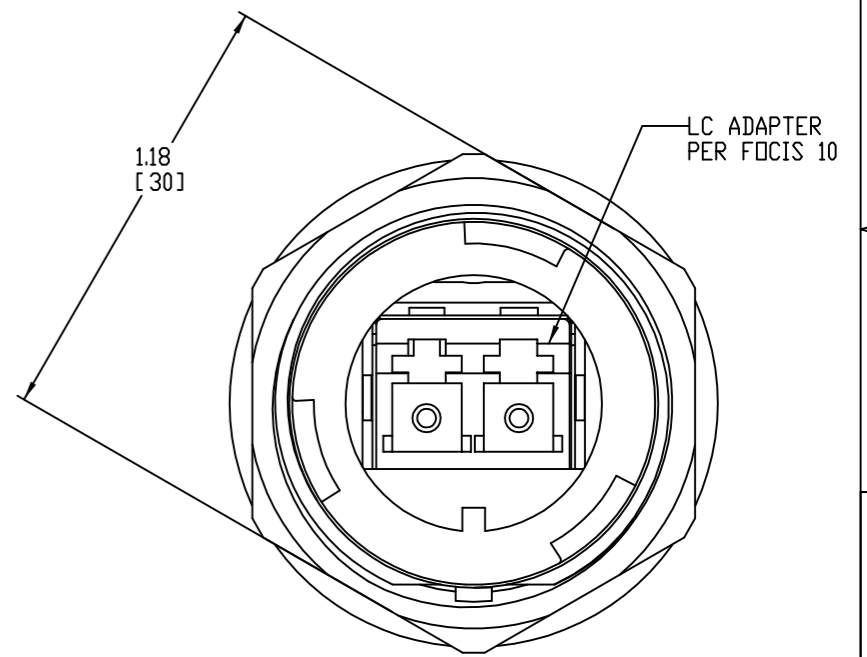
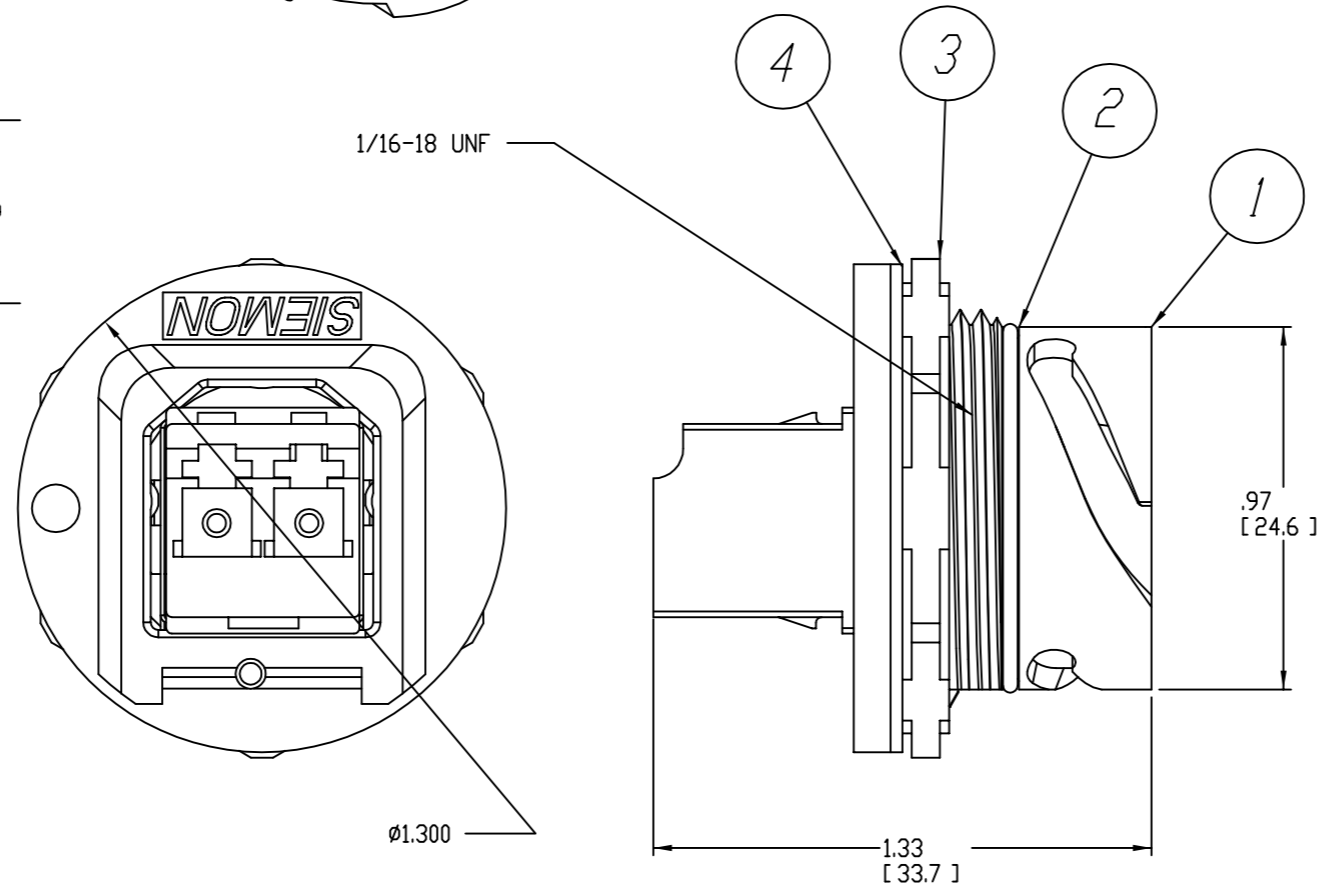


ITEM NO	DESCRIPTION	QTY
1	ADAPTER HOUSING	1
2	O-RING SEAL	1
3	BLACK METAL NUT- SEE NOTE 4	1
4	FACEPLATE SEAL	1
-	INSTRUCTIONS	1/20
-	POLY BAG	1
-	CARTON	1/20

REV.	ECD NO.	REVISIONS	BY	DATE	APVD.
A	275	NEW RELEASE	MDW	10-28-04	MW 10/28/04
B	1448	B1: REPLACE JAM NUT WITH BLACK METAL NUT B2: ADDED NOTE 4	RCS	4/9/07	DRH 5/3/07



PANEL KNOCKOUT
PANEL THICKNESS = .035" - .120" [.9 - 3]



- NOTES:
- B2 4. BLACK CHROME PER MIL-DTL-14538D (20-50 MICROINCHES) OVER NICKEL PLATED ZINC DIECAST.
 - 3. PANEL NUT MUST BE TIGHTENED 15 - 20 IN LBS [1.69 - 2.26 NEWTON METERS]
NOTE: THIS IS APPROXIMATELY 1/4 TURN AFTER THE PANEL NUT CONTACTS THE FACE PLATE
 - 2. FOR MORE INFORMATION PLEASE CONTACT A SIEMON CUSTOMER SERVICE REPRESENTATIVE.
 - 1. MATERIAL: JACK HOUSING - GLASS FILLED PBT, ADAPTER ALIGNMENT SLEEVES - PHOS BRONZE

PROPRIETARY INFORMATION THIS DOCUMENT CONTAINS PROPRIETARY INFORMATION OF THE SIEMON COMPANY AND IS DELIVERED ON THE EXPRESSED CONDITIONS THAT IT IS NOT TO BE DISCLOSED OR REPRODUCED IN WHOLE OR PART, OR USED FOR MANUFACTURING FOR ANYONE OTHER THAN THE SIEMON COMPANY WITHOUT ITS WRITTEN CONSENT AND THAT NO RIGHT IS GRANTED TO DISCLOSE OR SO USE ANY INFORMATION CONTAINED IN SAID DOCUMENT.	THE SIEMON COMPANY 101 SIEMON COMPANY DRIVE WATERTOWN, CT 06795 (860) 945-4200 www.siemon.com		TITLE INDUSTRIAL ADAPTER OUTLET SIDE ASSEMBLY LC FIBER	
	TOLERANCES .00 ±.02 .000 ±.010 .0000 - ANGLES 1°		DWG. NO. B-9076884	
	DRAWN BY MW DATE 10/28/04 CHECKED BY KJC DATE 10/28/04 ENGINEER MW DATE 10/28/04		PART NO. XLC-MM	
	ANSI Y14.5M-1982 OR ISO 1101, 129 & 3040 DIMENSIONS IN SQUARE BRACKETS ARE [mm], ALL OTHER DIMENSIONS ARE INCHES. DO NOT SCALE		REV. B	
SCALE 2:1			SHEET 1 OF 1	

CUSTOMER USE DRAWING

DWG. NO. B-9076884 SH 1 REV. B