



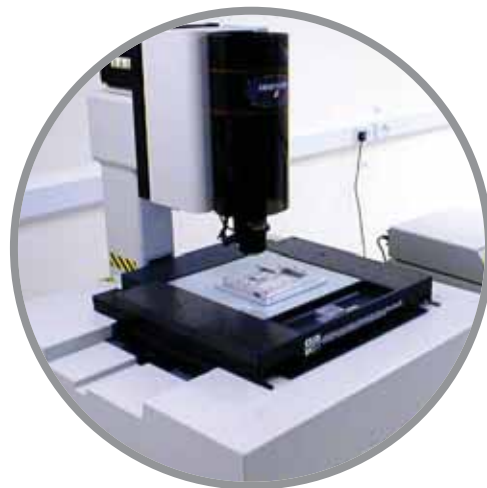
technology at work for you

DESIGN ENGINEERING

Our Product Development Engineers and R&D Lab combine state of the art tools and capabilities with years of experience to lead the industry in the development of innovative high speed connectivity solutions. These same experts and resources are aligned to work one-on-one with our customers to solve their unique connectivity challenges.

RESEARCH & DEVELOPMENT

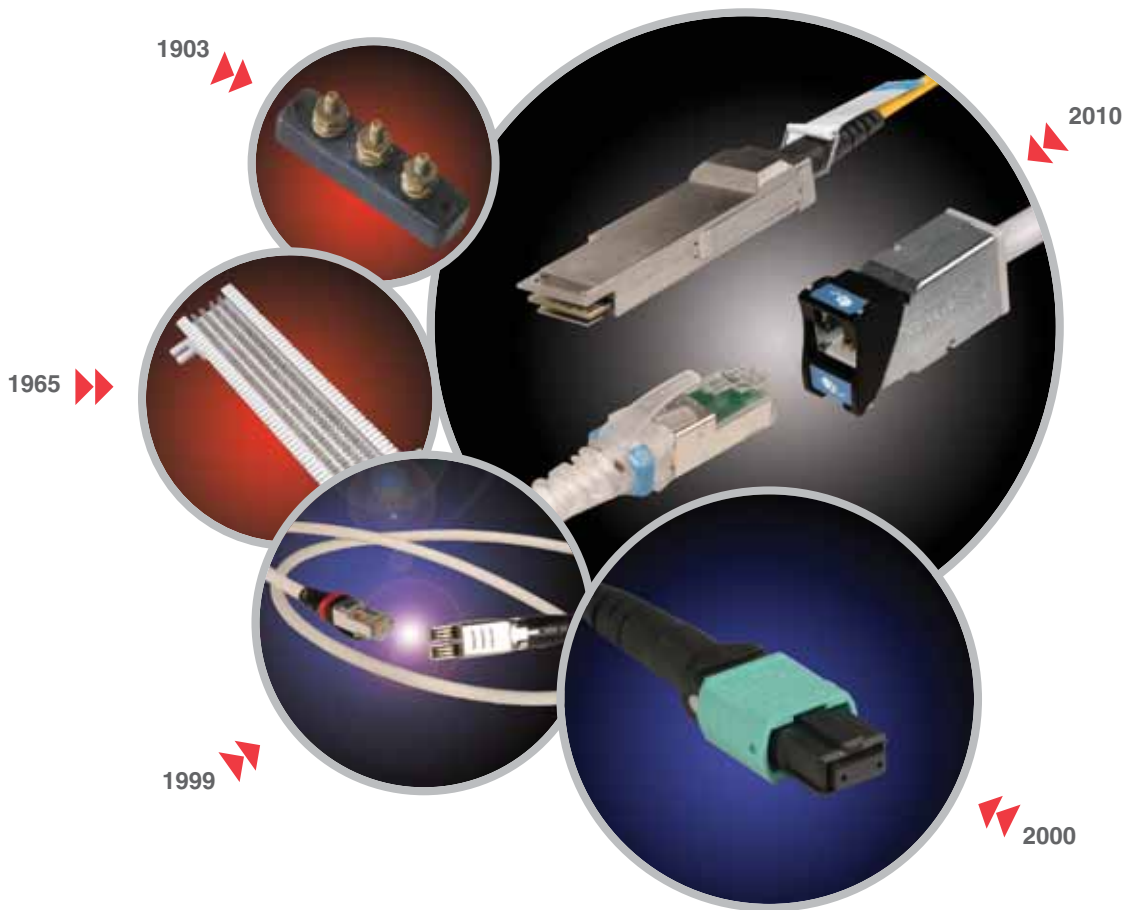
- Network Analyzers
- Time Domain Reflectometers
- Smart Scopes
- Interferometers
- Insertion Loss Meters
- Optical Switches
- Stereolithography Apparatus (SLA)
- Environmental Chambers
- Back Reflection Meters
- Vibration Tables
- Microscopes



SOFTWARE

- Oculus Designer
- ANSYS - Designer
- ANSYS - Q3D
- CST SI Modeling
- PCB Design
- Finite Element analysis
- Solid Works
- Auto CAD
- Physical Layer Test system
- MRPII
- EDI Capability





over a century of experience

INSPIRED BY OUR PAST, FOCUSED ON THE FUTURE

In 1903, Carl Siemon launched The Siemon Company on the strength of his own innovative plastic compounds and pioneering telecommunication technologies. Over a century later, that spirit of innovation is still at the core of everything we do at Siemon – driving us to develop and support the most forward-looking, high-quality line of network connectivity solutions.

- 1903** – Founded in Bridgeport, CT
- 1906** – Entered telecommunications industry with 3-pole block
- 1923** – Continued development of innovative products and manufacturing technology
- 1954** – Relocated headquarters to Watertown, CT
- 1960** – Introduced 66 block connecting hardware for telecom industry
- 1962** – Precision metal stamping capability through addition of Dynamic Tool division
- 1978** – Siemon Electronics Division created
- 1997** – Launched category 5e structured cabling products
- 1994** – First to market category 6 structured cabling products
- 1999** – Launched TERA, the first Category 7 system and still the highest-performing twisted pair solution available
- 2003** – End-to-end 10Gb/s XGLO optical fiber products
- 2005** – Global manufacturing expanded
- 2009** – Innovative Z-MAX copper cabling and VersaPOD data center cabinet solutions
- 2010** – High Speed Copper and Fiber Interconnect Products

equipment and resources

MANUFACTURING CAPABILITIES

- Automated/robotic assembly
- Fiber fusion splicing
- Fiber polishing
- Injection molding
- Progressive Metal Stamping
- CNC sheet metal punching
- CNC sheet metal bending
- Ultrasonic welding
- Wave soldering
- TIG welding
- Laser Etching



MANUFACTURING AND DEVELOPMENTAL TOOLING

- Wire EDM
- Conventional EDM
- 3-D machining
- Milling machines
- Surface grinders
- Ultrasonic polishers
- Ultrasonic cleaners
- Grinders
- Lathes



SIEMON INDUSTRY PARTICIPATION

TIA TR-42 Telecommunications Cabling Systems

- TIA TR-42.1 Generic and Premises Cabling Subcommittee
- TIA TR-42.7 Copper Cabling Systems Subcommittee
- TIA TR-42.8 Optical Fiber Cabling Subcommittee

IEEE.802.3 Ethernet Working Group

BICSI Standards Committee

ISO/IEC

- ISO/IEC JTC 1/SC 25 Interconnection of Information Technology Equipment Technical Committee
- ISO/IEC JTC 1/SC 25/WG 3 Customer Premises Cabling Working Group

IEC 48B Connectors Technical Committee

SAS NCITS-T10

Fiber Channel NCITS-T11

National Electrical Manufacturers Association (NEMA)

Premise Wiring

- Subcommittee High Performance
- Wire and Cable Section

National Electrical Contractors Association (NECA)

Codes and Standards Committee

SFF - Small Form Factor Committee

Ethernet Forum

InfiniBand Trade Association

quality

A REPUTATION BUILT ON QUALITY AND SERVICE

Although the methods for ensuring quality have changed since 1903, Siemon's approach has not. Vertically integrated from the inspection of raw materials to the testing of assembled products, Siemon tightly controls every step in the manufacturing process.

Siemon's high-precision plastic molding and metal stamping and forming facilities feed a highly-automated assembly operation in a model of integrated efficiency. Siemon engineers and manufacturing experts work closely with assembly teams to ensure that quality and reliability are fully integrated into every Siemon component and assembled product.

- Vertically Integrated Manufacturing
- Statistical Process Control
- Continuous Process Improvement
- Six Sigma
- Quality Metrics Reporting
- ISO 9001:2000

SALES AND SUPPORT

A knowledgeable, Siemon Interconnect Solution sales team is dedicated to customer satisfaction. The services provided by the team include product design assistance, project coordination and access to technical experts. Working with the SIS sales team, you will receive the highest level of support.

ENVIRONMENTAL STEWARDSHIP

Siemon's founding commitment to stewardship has resulted in a long history of progressive environmental action.

- ISO 14001
- RoHS product compliance
- Zero Landfill Operations
- Renewable Solar Power Generation
- Global Carbon Neutrality Program
- Green Building Council Member



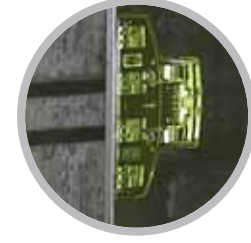
Raw Materials



Design



Manufacturing
Processes



Components



Automated
Assembly



Finished
Goods



Packaging



Stocking & Shipping



Service



Green



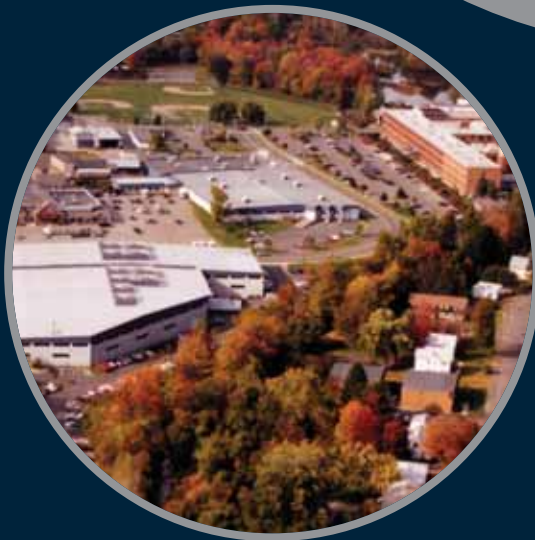
ISO 9001:2000, ISO 14001 Certification

SIEMON WORLD WIDE LOCATIONS



GLOBAL OFFICES AND MANUFACTURING LOCATIONS

- Global Headquarters ★
- Engineering & Manufacturing ◆
- Regional Offices ●
- Warehouse ■
- Siemon Interconnect Solutions (SIS) ◻●
- Direct Remote Coverage ○



Visit our website at www.siemon.com/sis
or contact SIS customer service at the
address and phone number below.

Siemon Headquarters
101 Siemon Company Drive
Watertown, CT USA
Phone (1) 860 945 4213 US



SIEMON™
INTERCONNECT SOLUTIONS