

### Integrated Solutions

The V-Built Top of Rack/Server Cabinet Solution has been specifically configured for the hyper-scale data center environment where modularity, efficiency and repeatability are critical. One part number includes a 600mm (23.6 in.) wide x 1200mm (47.3 in.) deep server cabinet that is pre-configured with two full height PDU/Cable Management Trays, tool-less cable managers, mounting hardware, leveling feet and casters. It ships complete on Siemon Interconnect Solutions' (optional) innovative shock pallet with ramp for easy mobility and set-up, simplifying the ordering process and ensuring repeatable quality, delivery and traceability.

SIS manufactures the most comprehensive offering of data center infrastructure products available, which can now be combined and integrated into a single solution. All V-Built cabinets are preconfigured in one of our regional ISO 9001:2015 certified manufacturing locations. Our sales professionals can work with you to develop a personalized solution, delivering the efficiencies of a simplified ordering process, shorter lead times, reduced transit cost and rapid on-site deployment.

V-Built delivers the complete solution to address the challenges facing today's dynamic data center environments.

### V-Built can be configured to include

- Intelligent PDUs (Metered, Managed, Monitored, Smart, Switched)
- Cooling Fans
- Copper and Fiber Direct Attach Cables
- Copper and Fiber Network Cabling
- Cable Management
- Airflow Management
- Shock Pallet and Ramp



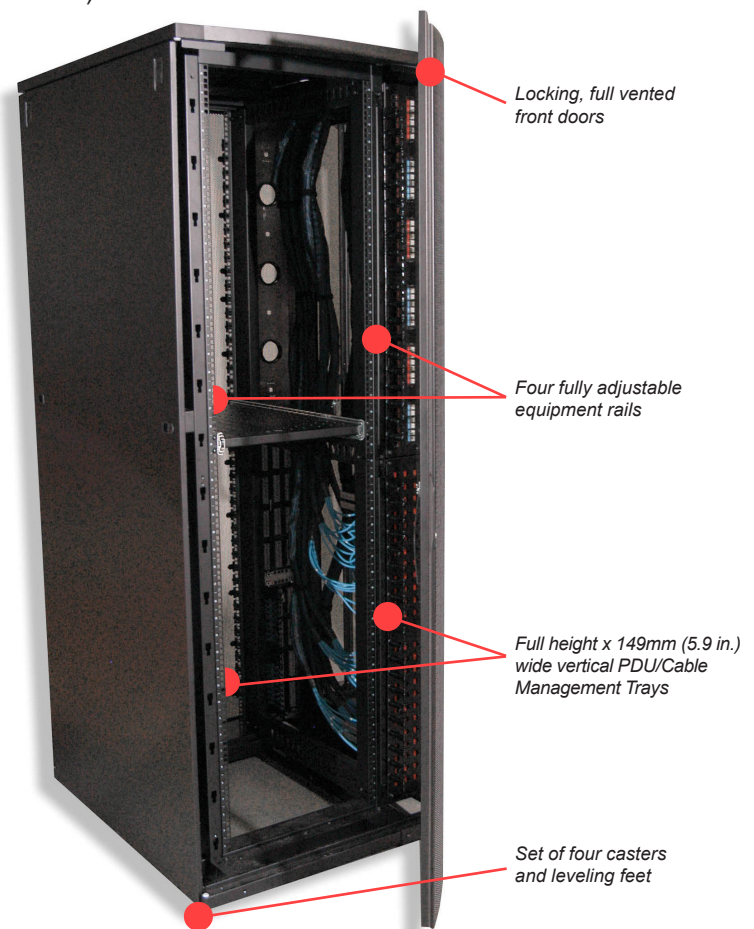
Numbered U Spaces



PDU Mounting

### V600™ Cabinet

- Constructed to be lightweight, yet extremely strong
- Ample access points in cover
- 1360 kg. (3,000 lbs.) weight capacity (static)
- 1020 kg. (2,250 lbs.) weight capacity (dynamic)
- Split level side panels with quick release latches
- Full front door/split rear doors
- Quick release, field reversible doors
- 71% perforated doors for increased air flow
- Clearly numbered U spaces on all four rails
- Equipped with two full height PDU/Cable Management Trays
- Cabinet and Shock Pallet ISTA 3E compliant
- Equipment rails can be pre-adjusted at the factory to meet specific switch or server mounting options
- 1,200mm (47.3 in.) depth cabinet accommodates most servers and equipment



V600 Cabinet

### Optional Accessories



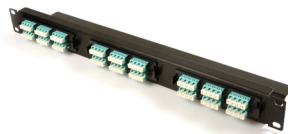
Intelligent PDUs



Tool-less Cable Managers



PDU/Cable Management Tray



Copper and Fiber Patch Panels



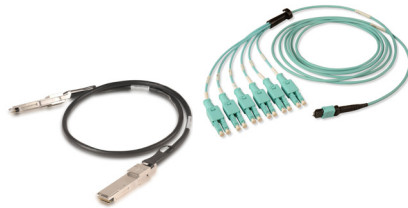
Brush Panels



SnapFit Thermal Blanking Panels



Shock Pallet and Ramp



Copper and Fiber Direct Attach Cables

### Ordering Information and Specifications

Part Number	Size	Number of Side Panels
V62A-0AB121-42P .....	42U .....	0
V62A-1AB121-42P .....	42U .....	1
V62A-2AB121-42P .....	42U .....	2
V62A-0AB121-45P .....	45U .....	0
V62A-1AB121-45P .....	45U .....	1
V62A-2AB121-45P .....	45U .....	2

<b>Internal Height*</b>	42U: 1867mm (73.5 in.) 45U: 200mm (78.75 in.)
<b>Internal Depth</b>	42U: 1000mm (39.5 in.) 45U: 1000mm (39.5 in.)
<b>Internal Width</b>	42U: 482mm (19 in.) 45U: 482mm (19 in.)
<b>External Height</b>	42U: 2016mm (79.4 in.) 45U: 2148mm (84.6 in.)
<b>External Depth</b>	42U: 1200mm (47.2 in.) 45U: 1200mm (47.2 in.)
<b>External Width</b>	42U: 600mm (24 in.) 45U: 600mm (24 in.)

\*Accommodates server depth up to 1000mm (39.5 in.) and a 150mm (5.9 in.) wide PDU/Cable Management Mounting Tray

"P" denotes the option to include the Shock Pallet.

All cabinets listed are black powder paint, have locking full vented front doors and split vented rear doors, two full height x 150mm (5.9 in.) wide vertical PDU/Cable Management Trays, 50 x M6 cage nuts, 50 x M6 screws, two stabilizing brackets, set of four casters, leveling feet and cable management equipment. Contact SIS for other available variations or consult with our sales professionals to build a cabinet that meets your specific needs.

### Siemon Interconnect Solutions

Watertown, CT USA  
 Phone (1) 860 945 4213 US  
 E-Mail - Customer Service: SIS\_customerservice@siemon.com  
 E-Mail - Technical Support: SIS\_techsupport@siemon.com

WWW.SIEMON.COM/SIS

