

# SkinnyPatch™ 6A Shielded Modular Cords - US

PATCH CORDS, PLUGS & CABLE - US

Simon's SkinnyPatch 6A Shielded Modular Cords deliver superior Category 6A performance with a reduced cable diameter for improved airflow and increased flexibility in high-density patching areas. The cord's smaller 28 AWG stranded copper construction offers a significantly tighter bend radius for easier cable routing and enhanced cable management, providing pathway space savings in racks and cabinets while facilitating moves, adds and changes in tight spaces. Confirmed by Intertek, an independent third party test lab, SkinnyPatch 6A Shielded Modular Cords exceed ANSI/TIA-568-C.2 and ISO/IEC 11801 Edition 2.2 performance standards. These cords also feature Simon's high performance shielded S/FTP construction for exceptional NEXT performance and innovative 360-degree crimp for excellent plug-to-cable strain relief.

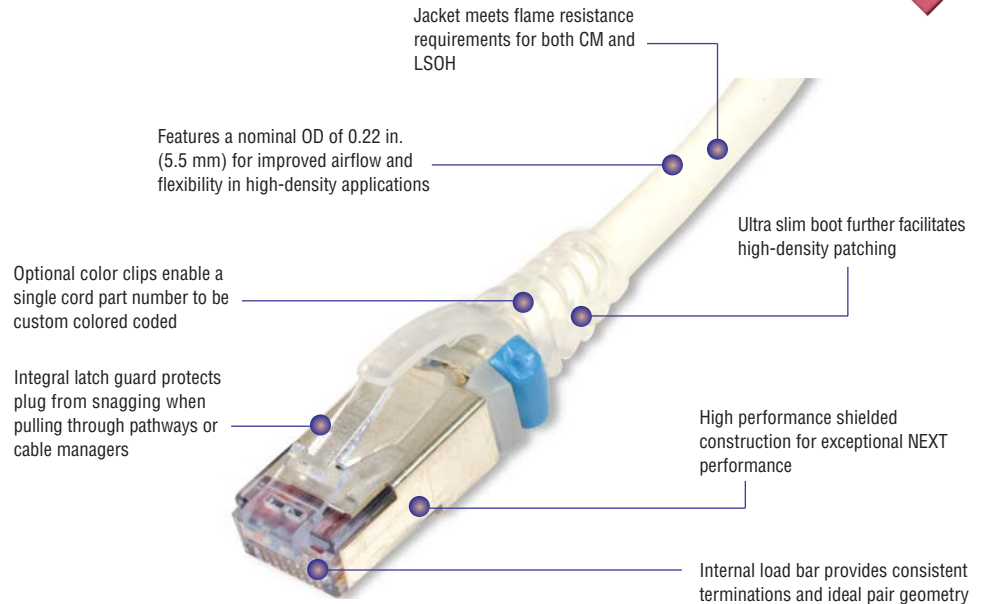


**PERFORMANCE SPECIFICATIONS**

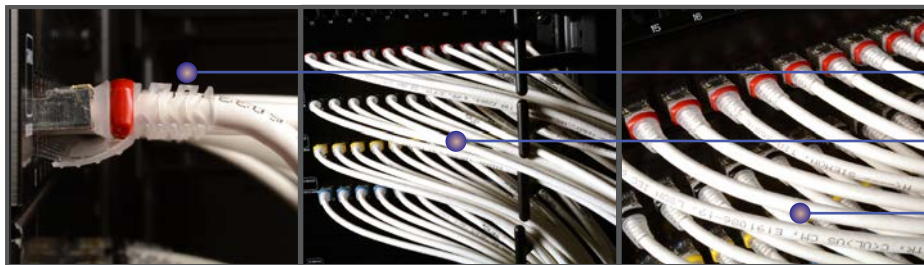
- ANSI/TIA-568-C.2\*
- TIA 968-A
- ANSI/TIA-1096-A
- ISO/IEC 11801\*
- IEEE 802.3 PoE Type 1, Type 2\*\*
- UPoE\*\*
- Power over HDBASE-T (PoH) \*\*
- IEC 60603-7
- cUL US Listed
- IEC 60332-1, 60754, 61034

\* Patch cord length is limited to 8 metres for a maximum channel length of 98 metres.

\*\* See table for recommended maximum bundle size.



Optional coloured clips enable field colour coding and can be easily snapped into place without having to disconnect cords



Boot and integrated strain relief ensures minimum bend radius for Category 6A performance

Smaller diameter cable significantly reduces bundle and pathway fill for space savings.

Offers improved airflow, accessibility and cable management in high-density applications.

# Product Information

## PERFORMANCE SPECIFICATIONS\*

CORD ASSEMBLY	
Compatibility	Category 6A, 6 and 5e RJ 45 outlets
Wiring	T568A/B as specified by part #
Marking	P/N, length, performance level
Operating Temperature	-20 to 75 °C (-4 to 167 °F)
Remote Powering	PoE Type 1, Type 2, UPoE, PoH
Green Features	RoHS, lead-free, halogen-free, PVC free
Plastic Materials	Flame retardant thermoplastic
CABLE	
Wire Size (Nominal)	28 AWG 7x36 Stranded bare copper
Construction	S/FTP
Cable O.D. (Nominal)	5.5 mm (0.22 in.)
Jacket Type	CM/LSOH
Bend Radius	22 mm (0.87 in.)
Attenuation De-Rating Factor	1.9

PLUG	
Number of Plug Insertion Cycles	2500
Min. Plug Retention Force	50N (11.24 lbf)
Contact Resistance	20 mΩ
Input to Output DC Resistance	200 mΩ (signal conductors) 100 mΩ (shield)
Insulation Resistance	500 MΩ
Min. Dielectric Withstand Voltage	1000 V DC or AC peak (contact to contact) 1500 V DC or AC peak (contact to shield)
Current Rating @ 25 C (77 F)	1.5 A
Flammability Rating	UL 94 - V0
Contact Materials	Copper alloy with contact plating of 50 microinches gold or equivalent

MAXIMUM RECOMMENDED BUNDLE SIZE		
Application	Current per Pair (mA)	28 AWG Patch Cords
Type 1 PoE (15.4 W)	350	48
Type 2 PoE (30 W)	600	48
Type 3 PoE (60 W)	600	24
Type 4 PoE (90 W)	960	24
PoH (100 W)	1000	24

## Ordering Information

SP6A-S(XX)-(XX)(X) . . . . . SkinnyPatch Category 6A double-ended, 4-pair, 28 AWG S/FTP stranded modular patch cord, T568A/B, clear boot.

### Length

- 03 = 0.9m (3 ft.)
- 05 = 1.5m (5 ft.)
- 07 = 2.1m (7 ft.)
- 10 = 3.1m (10 ft.)
- 15 = 4.6m (15 ft.)
- 20 = 6.1m (20 ft.)

### Bulk Package

- Blank = Non Bulk
- B = Bulk (Quantity 100)

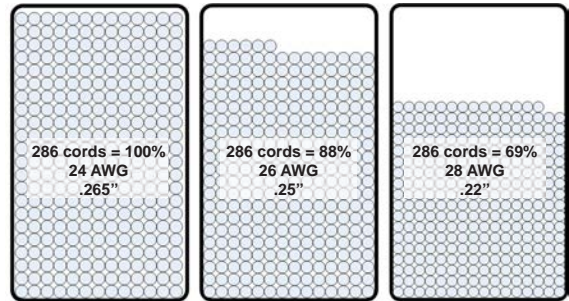
### Jacket Color

- 01 = Black    04 = Gray    07 = Green
- 02 = White    05 = Yellow    08 = Violet
- 03 = Red    06 = Blue    09 = Orange

CLIP-(XX) . . . . . Color coding clip, bag of 25

### Clip Color

- 01 = Black    04 = Grey    07 = Green
- 02 = White    05 = Yellow    08 = Violet
- 03 = Red    06 = Blue    09 = Orange



Fill Comparison: Category 6A Cords in a 6 x 3.5 cable manager



Construction: Smaller 28 AWG construction results in a smaller bend radius for easier routing in tight spaces.

Because we continuously improve our products, Siemon reserves the right to change specifications and availability without prior notice.

**Worldwide Headquarters**  
**North America**  
 Watertown, CT USA  
 Phone (1) 860 945 4200

**Regional Headquarters**  
**Europe Russia Africa**  
 Chertsy, Surrey, England  
 Phone (44) 0 1932 571771

**Regional Headquarters**  
**China**  
 Shanghai, P.R. China  
 Phone (86) 215385 0303

**Regional Headquarters**  
**Latin America**  
 Bogota, Colombia  
 Phone (571) 657 1950/51/52

**Regional Headquarters**  
**India Middle East**  
 Dubai, United Arab Emirates  
 Phone (971) 4 3689743

**Regional Headquarters**  
**Asia Pacific**  
 Sydney, Australia  
 Phone (61) 2 8977 7500

**Siemon Interconnect Solutions**  
**Watertown, CT USA**  
 Phone (1) 860 945 4213 US  
 www.siemon.com/SIS