

# Z-MAX™ 6 UTP PATCH PANELS

Z-MAX 6 UTP patch panels harness unprecedented performance and reliability in a high-density modular solution. These complete patch panel kits combine 19 inch patch panels with Z-MAX 6 panel outlets to offer exceptional category 6 patching solution.

The Z-MAX 6 UTP patch panels facilitate a world-class installation for data centers and telecommunications rooms by offering an attractive appearance combined with flexible labeling and color coding options.

The Z-MAX panel modules feature a patent pending angled IDC contact pattern to exploit the widest module cross-section, enabling up to 48-ports in just 1U of rack space. Panels are offered in flat and angled styles with fixed or removable rear cable managers.



**PATENTED**



**Z-MAX™**

**MODULAR PATCHING**

Additional space is provided for custom user labeling

High visibility snap-on magnifying label holders except either paper labels or Z-MAX icons for port identification

### STANDARDS COMPLIANCE

- ANSI/TIA-568 C.2 (Category 6)
- ISO/IEC 11801:2002 (Category 6)
- IEEE 802.3an
- IEEE 802.3af (PoE)
- IEEE 802.3at (PoE+)
- IEC 60603-7
- IEC 60603-7-4
- ANSI/TIA-1096-A

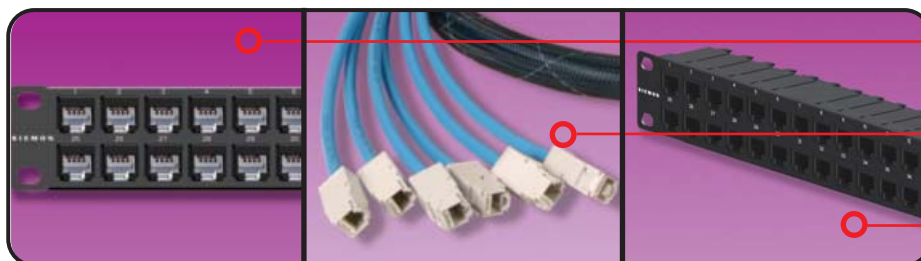
Lightweight, high strength steel with durable black finish

A quick-release lever allows individual modules to be easily removed even in high density applications

Rear cable manager ensures proper cable management practices for all installations

Panel outlets easily snap into place to accelerate installation

Bold port numbering enables quick identification of outlets



Panels are provided in complete kits which include the patch panel and Z-MAX panel outlets

Leverage the quick-snap design by combining Z-MAX trunk assemblies with empty Z-MAX patch panels

High density version provides 48 ports in just 1U to reduce valuable rack space consumption

# PRODUCT INFORMATION

## Performance Specification Chart:

MECHANICAL – PANEL	
Operating Temperature	-10 to 60 °C, (14 to 140 °F)
Flammability Rating	UL 94 V-0
Green Features	RoHS, lead-free, halogen-free, PVC free
Plastic Materials	Flame retardant thermoplastic
Dimensions (LxWxH)	109.2 mm x 482.6 mm x 44.2 mm (4.30" x 19.00" x 1.74" )
Mounting	CEA-310-E 19-inch (482.6mm) rack
Material – Panel	18 gauge cold rolled steel, black e-coat



## Fixed Ordering Information:

- Z6-PNL(X)-24K.....Z-MAX 24-Port, CAT 6 UTP Patch Panel Kit, 1 RMS, Black, with Jacks
- Z6-PNL(X)-U48K.....Z-MAX 48-Port, CAT 6 UTP Patch Panel Kit, 1 RMS, Black, with Jacks
- Z-PNL(X)-24E.....Z-MAX 24-Port UTP Patch Panel, 1RMS, Black, Empty
- Z-PNL(X)-U48E.....Z-MAX 48-Port UTP Patch Panel, 1RMS, Black, Empty

Panel Style  
**(Blank)** - Flat  
**A** - Angled

## Removable Ordering Information

- Z6-P(X)-24.....Z-MAX 24-Port, CAT 6 UTP Patch panel with removable wire manager kit, 1 RMS, Black, with Jacks
- Z6-P(X)-48.....Z-MAX 48-Port, CAT 6 UTP Patch panel with removable wire manager kit, 1 RMS, Black, with Jacks
- Z-P(X)-24.....Z-MAX 24-Port UTP Patch panel with removable wire manager, 1RMS, Black, Empty
- Z-P(X)-48.....Z-MAX 48-Port UTP Patch panel with removable wire manager, 1RMS, Black, Empty

Panel Style  
**(F)** - Flat  
**A** - Angled

Z-BL-01

Panels include Z-Tool\*, label / icon holders, designation labels, cable ties and mounting hardware.

Note: 1U = 44.5mm (1.75 in.)

\* included in panel kit only

Because we continuously improve our products, Siemon reserves the right to change specifications and availability without prior notice. Z-MAX™ is a trademark of Siemon

### For additional resource information:

Visit our web site at [www.siemon.com](http://www.siemon.com)

## Panel Accessories

- Z-PNL-PL24.....Patch panel label sheet, numbered 1 to 24, bag of 100
- Z-PNL-PL48.....Patch panel label sheet, numbered 25 to 48, bag of 100
- Z-PNL-PS.....Patch panel label holder, bag of 25
- Z6-P.....Z-MAX 6 UTP panel outlet
- Z-BL-01.....Z-MAX panel blank, bag of 10, black



Note: Z-MAX UTP panels are designed for use with Z-MAX UTP panel outlets only, for more information on panel outlets please reference outlet specifications sheet.

\* Termination technique may vary. See product instructions for details

**Worldwide Headquarters  
 North America**  
 Watertown, CT USA  
 Phone (1) 860 945 4200 US  
 Phone (1) 888 425 6165

**Regional Headquarters  
 EMEA**  
 Europe/Middle East/Africa  
 Surrey, England  
 Phone (44) 0 1932 571771

**Regional Headquarters  
 Asia/Pacific**  
 Shanghai, P.R. China  
 Phone (86) 21 5385 0303

**Regional Headquarters  
 Latin America**  
 Bogota, Colombia  
 Phone (571) 657 1950