

# Z-MAX™ 6A Shielded Patch Panels

Z-MAX 6A shielded patch panels provide unprecedented performance and reliability in a high-density modular solution. These complete patch panel kits combine 19 inch shielded patch panels with Z-MAX 6A shielded panel outlets to offer the industry's highest performing category 6A patching solution.

The Z-MAX shielded patch panels facilitate a world-class installation for data centers and telecommunications rooms by offering an attractive appearance combined with flexible labeling and color coding options.

These panels also accelerate installation through quick-snap module insertion and automatic grounding of modules via an embedded grounding conductor. The panel allows one- or two-hole ground lug connections to the site grounding system. This complete shielding solution provides maximum protection from outside interference and superior alien crosstalk mitigation. Panels are offered in flat and angled styles with fixed or removable rear cable managers.



**PATENTED**



**Z-MAX™**

**MODULAR PATCHING**

### STANDARDS COMPLIANCE

- ANSI/TIA-568-C.2
- ISO/IEC 11801 Ed 2.2
- ETL Tested
- IEC 60603-7
- IEC 60603-7-51
- IEEE 802.3an
- IEEE 802.3af (PoE)
- IEEE 802.3at (PoE+)
- ANSI/TIA-1096-A

Additional space is provided for custom user labeling

High visibility snap-on magnifying label holders accept either paper labels or Z-MAX icons for port identification

Lightweight, high strength steel with durable black finish

A quick-release lever allows individual modules to be easily removed even in high density applications

Panel outlets easily snap into place and are automatically grounded without additional steps

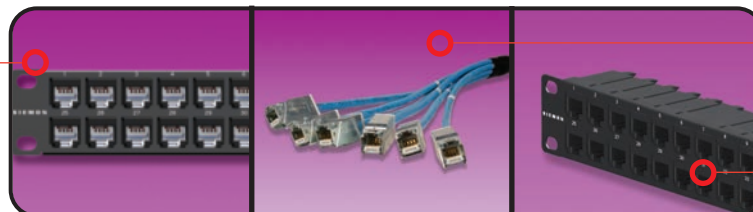
Bold port numbering enables quick identification of outlets

Rear cable manager ensures proper cable management practices for all installations, critical to category 6A performance

Panels are provided in complete kits which include the patch panel and Z-MAX panel modules

Leverage the quick-snap design by combining Z-MAX trunk assemblies with empty Z-MAX patch panels

High density version provides 48 ports in just 1U to reduce valuable rack space consumption



# PRODUCT INFORMATION

## Performance Specification Chart:

| MECHANICAL — PANEL    |                                                    |
|-----------------------|----------------------------------------------------|
| Operating Temperature | -10 to 60 °C, (14 to 140 °F)                       |
| Flammability Rating   | UL 94 V-0                                          |
| Green Features        | RoHS, lead-free, halogen-free, PVC free            |
| Plastic Materials     | Flame retardant themoplastic                       |
| Dimensions (LxWxH)    | 109.2 mmx 482.6mm x 44.2mm (4.30"x19.00" x1.74 " ) |
| Mounting              | CEA-310-E 19-inch (482.6mm) rack                   |
| Material – Panel      | 18 gauge cold rolled steel, black e-coat           |
| Ground Lug Attachment | 3/8" 1 hole or two-hole lug (1" spacing)           |

## Fixed Ordering Information:

Z6AS-PNL(X)-24K.....Z-MAX 24-Port, CAT 6A Shielded Patch Panel, Kit, 1 RMS, Black, with Jacks  
 Z6AS-PNL(X)-U48K .....Z-MAX 48-Port, CAT 6A Shielded Patch Panel Kit, 1 RMS, Black, with Jacks  
 ZS-PNL(X)-24E.....Z-MAX 24-Port Shielded Patch Panel, 1RMS, Black, Empty  
 ZS-PNL(X)-U48E.....Z-MAX 48-Port Shielded Patch Panel, 1RMS, Black, Empty

Panel Style

**(Blank)** - Flat  
**A** - Angled

*Panels Include: Cable Ties, Icon/Label Holders, Labels, #6 AWG Grounding Lug, and Mounting Hardware*

## Removable Ordering Information

Z6AS-P(X)-24 .....Z-MAX 24-Port, CAT 6A Shielded patch panel with removable wire manager kit, 1 RMS, Black, with Jacks  
 Z6AS-P(X)-48. ....Z-MAX 48-Port, CAT 6A Shielded patch panel with removable wire manager kit, 1 RMS, Black, with Jacks  
 ZS-P(X)-24.....Z-MAX 24-Port Shielded patch panel with removable wire manager, 1RMS, Black, Empty  
 ZS-P(X)-48.....Z-MAX 48-Port Shielded patch panel with removable wire manager, 1RMS, Black, Empty

Panel Style

**(F)** - Flat  
**A** - Angled

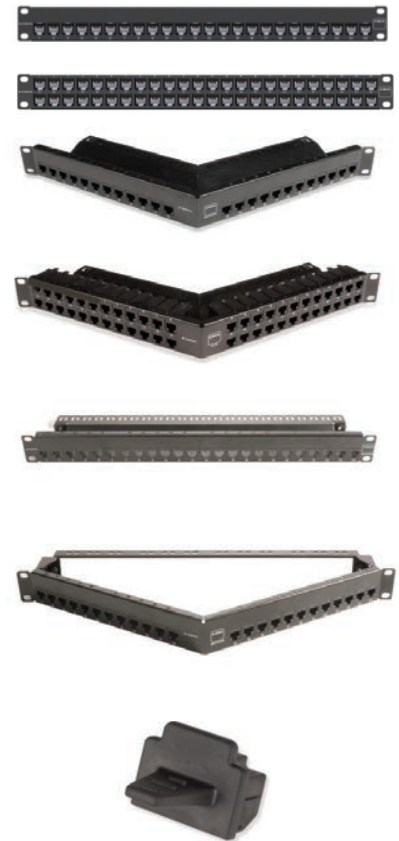
## Panel Accessories

Z-PNL-PL24.....Patch panel label sheet, numbered 1 to 24, bag of 100  
 Z-PNL-PL48.....Patch panel label sheet, numbered 25 to 48, bag of 100  
 Z-PNL-PS .....Patch panel label holder, bag of 25  
 Z6A-SP .....Z-MAX 6A shielded panel outlet  
 Z-BL-01 .....Z-MAX panel blank, bag of 10 black



*Note: Z-MAX Shielded panels are designed for use with Z-MAX Shielded panel outlets only, for more information on panel outlets please reference outlet specifications sheet.*

*\* Termination technique may vary. See product instructions for details*



Z-BL-01

*Panels include Z-Tool\*, label / icon holders, designation labels, cable ties, grounding lug and mounting hardware.*

*Note: 1U = 44.5mm (1.75 in.)*

*\* included in panel kit only*

*Because we continuously improve our products, Siemon reserves the right to change specifications and availability without prior notice. Z-MAX™ is a trademark of Siemon*

**For additional resource information:**

Visit our web site at [www.siemon.com](http://www.siemon.com)

### Worldwide Headquarters North America

Watertown, CT USA  
 Phone (1) 860 945 4200 US  
 Phone (1) 888 425 6165

### Regional Headquarters EMEA

Europe/Middle East/Africa  
 Surrey, England  
 Phone (44) 0 1932 571771

### Regional Headquarters Asia/Pacific

Shanghai, P.R. China  
 Phone (86) 21 5385 0303

### Regional Headquarters Latin America

Bogota, Colombia  
 Phone (571) 657 1950