

Z-MAX[®] 6A UTP Outlets

The Category 6A UTP Z-MAX outlet offers best-in-class performance in every critical specification, exceeding all Category 6A performance requirements, including alien crosstalk. Its innovative features not only accelerate and simplify termination, but remove installation variability for consistently high and repeatable performance — every termination, every time!

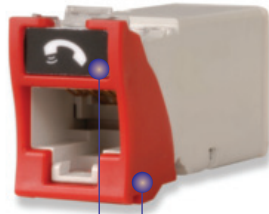
Compact — Slim and side-stackable for high-density applications. Supports “pass-thru” feature to mount from the front or rear of a faceplate

Guided Termination Features — Lacing channels guide correct conductor placement while 2-sided color-coding provides wiring verification before and after lacing



Enclosed IDC Terminations — IDC terminations are fully enclosed in the outlet housing for robust protection

High-Visibility Icon System — Printed icons allow designation for voice / data applications and also provide an additional color coding option



Robust Hinged Cable Retention — Hinged clip accommodates multiple cable diameters

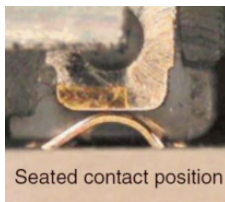
Fastest Termination Time — Zero-Cross™ termination module and 2-step Z-TOOL™ termination process combine for best-in-class termination time

Compliant — Is compliant with UL2043 and is appropriate for use in air handling spaces



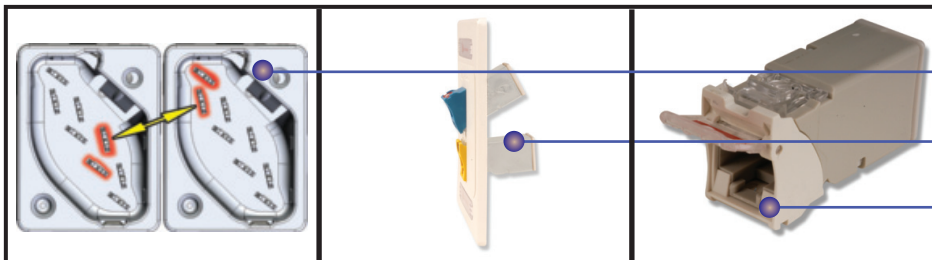
STANDARDS COMPLIANCE

- ANSI/TIA-568-C.2
- ISO/IEC 11801 2nd ed Amendment 1
- ETL Tested
- IEEE 802.3an
- IEEE 802.3af (Type 1)
- IEEE 802.3at (Type 2)
- IEEE 802.3bt (Type 3 and 4)
- ANSI/TIA 1096-A
- IEC 60603-7-4
- IEC 60512-99-001 (3rd party verified)



Seated contact position

Contact Integrity – Featuring Siemon's patented crowned jack contact geometry that improves electrical and mechanical performance and ensures that any jack or plug contact damage due to arcing caused by unmating under PoE load occurs well away from the final mated contact position.



Diagonal IDC alignment maximizes outlet to outlet pair separation to achieve AXT performance in high-density environments.

A single hybrid outlet supports both angled and flat mounting orientations.

Spring door option minimizes exposure to dust and other contaminants.

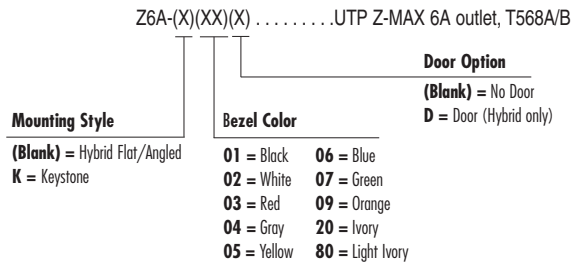
Product Information

PERFORMANCE SPECIFICATIONS

MECHANICAL - JACK	
Number of Plug Insertion Cycles	2500
Min. Plug Retention Force	50N (11.24 lbf)
Plug Compatibility	Compatible with RJ45 (8-position) or RJ11 (6-position) plugs
MECHANICAL - TERMINATION	
Wire Size Range (nominal)	23-26 AWG solid and stranded
Wire Insulation Diameter Range (max)	1.48mm (0.058 in.)
Conductor OD Size (max)	0.60mm (0.023 in.)
Cable OD (max)	9mm (0.354 in.)
Reterminations	5
Wiring	T568A/B

ELECTRICAL	
Contact Resistance	20 mΩ
Input to Output Resistance	200 mΩ
Min. Dielectric Withstand Voltage (contact to contact)	1000 V DC or AC peak
Min. Dielectric Withstand Voltage	1500 V DC or AC peak
Insulation Resistance	500 mΩ
Compatibility	Backwards to Cat 5e and cat 6
Current Rating	1.5 A PoE, PoE +
PoE	Suitable for PoE and PoE+
MECHANICAL - GENERAL	
Operating Temperature	-10 to 60 °C (14 to 140 °F)
Flammability Rating	UL 94 V-0
Green Features	RoHS, lead-free, halogen-free, PVC free
Housing Material	Glass-reinforced nylon
Contact Materials	Copper alloy, plated with 50 micro inches (1.27 micron) minimum thick gold or equivalent at contact interface
Plastic Materials	Flame retardant thermoplastic
Dimensions (L x W x H)	41.2 x 14.5 x 21.1mm (1.6 x .570 x .832 in.)

Ordering Information



Outlet terminates UTP cable constructions with 23 – 26 AWG (0.64 – 0.51mm) solid and 26 AWG (0.48mm) stranded conductors, with up to 0.60mm diameter conductors and up to 1.48mm diameter over insulation.

ⓑ Add "B" to end of part number for bulk project pack of 100 modules (hybrid modules include Icons).



Z-MAX 6A UTP outlets utilize 10G MAX faceplates and cannot be side-stacked in standard MAX faceplates.

Because we continuously improve our products, Siemon reserves the right to change specifications and availability without prior notice.

**Worldwide Headquarters
North America**
 Watertown, CT USA
 Phone (1) 860 945 4200

**Regional Headquarters
Europe Russia Africa**
 Chertsy, Surrey, England
 Phone (44) 0 1932 571771

**Regional Headquarters
China**
 Shanghai, P.R. China
 Phone (86) 215385 0303

**Regional Headquarters
Latin America**
 Bogota, Colombia
 Phone (571) 657 1950/51/52

**Regional Headquarters
India Middle East**
 Dubai, United Arab Emirates
 Phone (971) 4 3689743

**Regional Headquarters
Asia Pacific**
 Sydney, Australia
 Phone (61) 2 8977 7500

**Siemon Interconnect Solutions
Watertown, CT USA**
 Phone (1) 860 945 4213 US
 www.siemon.com/SIS

Each Z-MAX 6A UTP hybrid flat/angled outlet includes 1 printed icon set with the following color/print options.



- | | |
|-------------------------------|--------------------------------|
| Front | Rear |
| 1 - Red Data | 1 - Red Voice |
| 1 - Blue Data | 1 - Blue Voice |
| 1 - Bezel Color-Matching Data | 1 - Bezel Color-Matching Voice |
| 1 - White Blank | 1 - Bezel Color-Matching Blank |