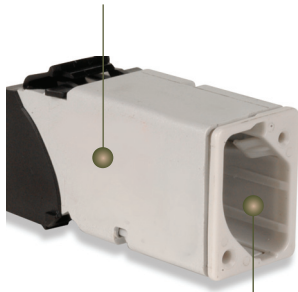


Z-MAX® 6 UTP OUTLETS

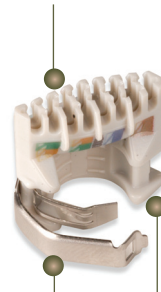
The Category 6 UTP Z-MAX outlet offers best-in-class performance exceeding all Category 6 performance requirements. Its innovative features not only accelerate and simplify termination, but remove installation variability for consistently high and repeatable performance - every termination, every time! This consistency eliminates troubleshooting time due to marginal passes during field testing.

Compliant — Is compliant with UL2043 and is appropriate for use in air handling spaces

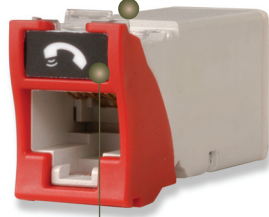
Compact — Slim and side-stackable for high-density applications. Supports "pass-thru" feature to mount from the front or rear of a faceplate



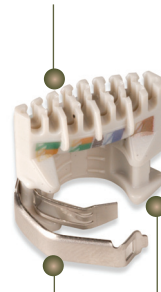
Guided Termination Features — Lacing channels guide correct conductor placement while 2-sided color-coding provides wiring verification before and after lacing



Enclosed IDC Terminations — IDC terminations are fully enclosed in the outlet housing for robust protection



Robust Hinged Cable Retention — Hinged clip accommodates multiple cable diameters

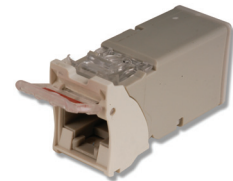


Flexibility and Simplified Ordering

A single hybrid outlet supports both angled and flat mounting orientations.

High-Visibility Icon System — Printed icons allow designation for voice / data applications and also provide an additional color coding option

Fastest Termination Time — Zero-Cross™ termination module and 2-step Z-TOOL™ termination process combine for best-in-class termination time



Spring Door Option

Minimises exposure to dust and other contaminants.



Contact Integrity — Featuring Siemon's patented crowned jack contact geometry that improves electrical and mechanical performance and ensures that any jack or plug contact damage due to arcing caused by unmating under PoE load occurs well away from the final mated contact position.

STANDARDS COMPLIANCE

- TIA-568-C.2
- ISO/IEC 11801:Ed 2.2 (Cat6)
- IEEE 802.3af (Type 1)
- IEEE 802.3at (Type 2)
- IEEE 802.3bt (Type 3 and 4)
- IEC 60603-7
- TIA-968-A (formerly FCC Part 68 Subpart F)
- ANSI/TIA-1096-A
- IEC 60603-7-4
- IEC 60512-99-001 (3rd party verified)

PRODUCT INFORMATION

Performance Specifications:

ELECTRICAL	
Contact Resistance (mated)	20 mΩ
Input to Output Resistance	200 mΩ (single conductors)
Min. Dielectric Withstand Voltage (contact to contact)	1000 V DC or AC peak
Insulation Resistance	500 MΩ
Compatibility	Backwards to cat 5e and cat 6
Current Rating	1.5 A
POE	Suitable for PoE and PoE+
MECHANICAL — GENERAL	
Operating Temperature	-10 to 60 °C (14 to 140 °F)
Flammability Rating	UL 94 V-0
Green Features	RoHS, lead-free, halogen-free, PVC free
Housing Material	Glass-reinforced nylon
Contact Materials	Copper alloy, plated with 50 micro inches (1.27 micron) minimum thick gold or equivalent at contact interface
Plastic Materials	Flame retardant thermoplastic
Dimensions (LxWxH)	41.2x14.5x21.2mm (1.6x.570x.832 in.)

MECHANICAL — JACK	
Number of Plug Insertion Cycles	2500
Min. Plug Retention Force	50N (11.24 lbf)
Plug Compatibility	Compatible with RJ45 (8-position) or RJ11 (6-position) plugs

MECHANICAL — TERMINATION	
Wire Size Range (nominal)	23-26 AWG solid and stranded
Wire Insulation Diameter Range (max)	1.48mm (0.058 in.)
Conductor OD Size (max)	0.60mm (0.023 in.)
Cable OD (max)	9mm (0.354 in.)
Re terminations	5
Wiring	T568A/B

Each Z-MAX 6A hybrid outlet includes 1 printed icon set with the following color/print options.



- | | |
|-------------------------------|--------------------------------|
| 1 - Red Data | 1 - Red Voice |
| 1 - Blue Data | 1 - Blue Voice |
| 1 - Bezel Color-Matching Data | 1 - Bezel Color-Matching Voice |
| 1 - White Blank | 1 - Bezel Color-Matching Blank |

Ordering Information:

Z6-(X)(XX)(X) UTP Z-MAX 6 outlet, T568A/B

Mounting Style

- (Blank) = Hybrid Flat/Angled
- K = Keystone

Bezel Colour

- | | |
|-------------|------------------|
| 01 = Black | 06 = Blue |
| 02 = White | 07 = Green |
| 03 = Red | 09 = Orange |
| 04 = Gray | 20 = Ivory |
| 05 = Yellow | 80 = Light Ivory |

Door Option

- (Blank) = No Door
- D = Door (Hybrid only)

Outlet terminates UTP cable constructions with 23 – 26 AWG (0.64 – 0.51mm) solid and 26 AWG (0.48mm) stranded conductors, with up to 0.60mm diameter conductors and up to 1.48mm diameter over insulation.

Add "D" to end of part number for spring door option. (Hybrid only)

© Add "B" to end of part number for bulk project pack of 100 modules (hybrid modules include icons).

Note: Z-MAX outlets utilise the Z-TOOL termination tool. Included with each standard pack of Z-MAX outlets.

Note: Keystone version is designed for integration with various international mounting products and is not compatible with MAX® mounting hardware.

Because we continuously improve our products, Siemon reserves the right to change specifications and availability without prior notice.

Worldwide Headquarters
North America
 Watertown, CT USA
 Phone (1) 860 945 4200 US
 Phone (1) 888 425 6165

Regional Headquarters
Europe/Russia/Africa
 Chertsy, Surrey, England
 Phone (44) 0 1932 571771

Regional Headquarters
China
 Shanghai, P.R. China
 Phone (86) 215385 0303

Regional Headquarters
Latin America
 Bogota, Colombia
 Phone (571) 657 1950/51/52

Regional Headquarters
Middle East
 Dubai, United Arab Emirates
 Phone (971) 4 3689743
 Phone (971) 50 5518716

Regional Headquarters
Asia/Pacific
 Frenchs Forest
 Sydney, Australia
 Phone (86) 21 5385 0303

Siemon Interconnect
Solutions
 Watertown, CT USA
 Phone (1) 860 945 4213 US
 www.siemon.com/SIS



For additional resource information:

Visit our web site at www.siemon.com

Because we continuously improve our products, Siemon reserves the right to change specifications and availability without prior notice.