

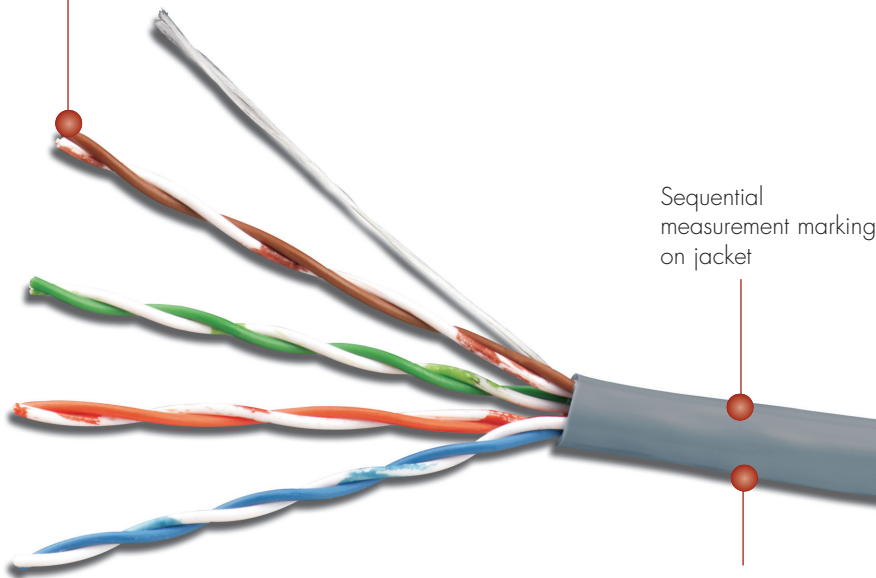
SOLUTION 5e[®] UTP CABLE

Siemon Solution 5e UTP cable perfectly complements the performance of our category 5e outlets. Siemon cable meets or exceeds all TIA/EIA and ISO/IEC requirements for category 5e/class D transmission performance. Utilising Siemon cable is the ideal way to ensure optimum channel performance and is essential for a complete end-to-end warranted system.



CABLE — INTERNATIONAL

Meets all TIA/EIA and ISO/IEC specifications for cat 5e/class D performance

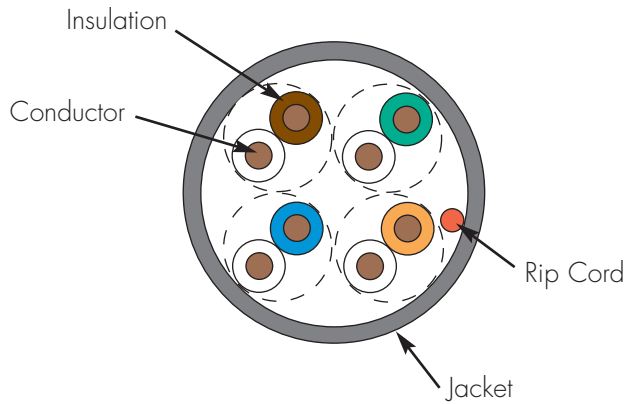


Sequential measurement marking on jacket

CM and LSOH jacket options available

Cable Construction

- UTP
- 4-pair with rip cord
- 0.5mm solid bare copper/24 AWG
- 5.5mm max jacket diameter
- 1.0mm max conductor insulation diameter



Compliance

- ISO/IEC 11801:2002 (category 5e)
- TIA/EIA-568-C.2
- IEC 61156-5:2002
- LSOH: IEC 60332-1, IEC 60754, and IEC 61034
- CM: UL1685, IEC 60332-1

Cable packaged in a Reelex box (305m) to protect product during shipping and facilitate tangle-free installation

PRODUCT INFORMATION

ELECTRICAL SPECIFICATIONS

DC Resistance	<9.38 Ω/100m
DC Resistance Unbalance	5%
Mutual Capacitance	5.6 nF/100m
Capacitance Unbalance	<330 pF/100m
Characteristic Impedance (ohms)	1-100 MHz: 100 ± 15% 100-350 MHz: 100 ± 22%
NVP	70%
TCL	40-10 x log(f)dB
Delay Skew	≤40ns

PHYSICAL PROPERTIES

	LSOH	CM
Pulling Tension (max)	110N	110N
Bend Radius (min)	22mm	25mm
Installation Temperature	0 to 60°C	0 to 60°C
Storage Temperature	-20 to 75°C	-20 to 75°C
Operating Temperature	-20 to 60°C	-20 to 60°C

TRANSMISSION PERFORMANCE

■ TIA/EIA & ISO/IEC

□ SIEMON TYPICAL

Frequency (MHz)	Insertion Loss (dB)		NEXT (dB)*		PS NEXT (dB)		ACR (dB)		PSACR (dB)		ACR-F (dB)		PS ACR-F (dB)		Return Loss (dB)		Propagation Delay (ns)	
	100m	305m	100m	305m	100m	305m	100m	305m	100m	305m	100m	305m	100m	305m	100m	305m	100m	305m
1.0	2.0	1.9	65.3	79.3	62.3	72.3	63.2	77.4	60.2	70.4	63.8	84.8	60.8	78.8	20.0	27.0	570	545
4.0	4.1	3.7	56.3	70.0	53.3	63.3	52.2	66.6	49.2	59.6	51.8	72.8	48.8	66.8	23.0	32.0	552	527
10.0	6.5	5.8	50.3	64.3	47.3	57.3	43.8	58.5	40.8	51.5	43.8	64.8	40.8	58.8	25.0	32.0	545	520
16.0	8.2	7.4	47.2	61.2	44.2	54.2	39.0	53.8	36.0	46.8	39.7	60.7	36.7	54.7	25.0	32.0	543	518
20.0	9.3	8.3	45.8	59.8	42.8	52.8	36.5	51.5	33.5	44.5	37.8	58.8	34.8	52.8	25.0	32.0	542	517
31.25	11.7	10.5	42.9	56.9	39.9	49.9	31.1	46.4	28.1	39.4	33.9	54.9	30.9	48.9	23.6	30.0	540	515
62.5	17.0	15.0	38.4	52.4	35.4	45.4	21.4	37.4	18.4	30.4	27.9	48.9	24.9	42.9	21.5	30.0	539	514
100.0	22.0	19.3	35.3	49.3	32.3	42.3	13.3	30.0	10.3	23.0	23.8	44.8	20.8	38.8	20.1	30.0	538	513
160.0*	28.6	25.1	32.2	46.2	29.2	39.2	3.7	21.1	0.7	14.1	19.7	40.7	16.7	34.7	18.7	28.0	537	512
200.0*	32.4	28.1	30.8	44.8	27.8	37.8	-1.6	16.7	-4.6	9.7	17.8	38.8	14.8	32.8	18.0	27.0	537	512
250.0*	36.9	31.4	29.3	43.3	26.3	36.3	-7.5	11.9	-10.5	4.9	15.8	36.8	12.8	30.8	17.3	26.0	536	511
300.0*	41.0	34.5	28.1	42.1	25.1	35.1	-12.8	7.6	-15.8	0.6	14.3	35.3	11.3	29.3	16.8	25.0	536	511
350.0*	44.9	39.4	27.1	41.1	24.1	34.1	-17.7	1.7	-20.7	-5.3	12.9	33.9	9.9	27.9	16.3	24.0	536	511

*Values above industry requirements are for information only

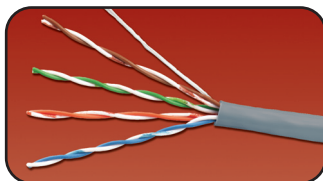
All performance based on 100 metres.

Solution 5e® UTP 4-Pair Solid Cable:

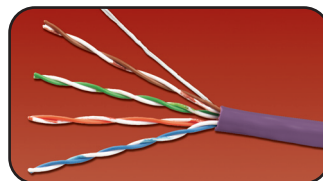
9C5M4-E1PVC (CM, IEC 60332-1), Gray Jacket, 305m Reel

9C5L4-E1LSOH (IEC 60332-1), Violet Jacket, 305m Reel

Other cable lengths also available: Add "-5CR" for 500m Reel



9C5M4-E1



9C5L4-E1

For related product information request Spec Sheet(s):

- MAX® 5e Modules (PROD-SS-MPD)
- MC® 5e Modular Patch Cords (PROD-SS-MC5)
- HD® 5 Patch Panels (PROD-SS-HD5)
- MAX Patch Panels (PROD-SS-MXP)
- S110® Connection System (PROD-SS-S10)
- S110 Patch Plugs (PROD-SS-10P)

Because we are continuously improving our products, Siemon reserves the right to change specifications and availability without prior notice.

MAX®, HD®, S110®, MC® and Premium 5e® are trademarks of Siemon

Siemon — EMEA HQ & UK
United Kingdom
Tel: +44 (0) 1932 571771

Siemon — France
Paris
Tel: +33 1 46 46 11 85

Siemon — Deutschland
Troisdorf
Tel: +49 2241 97398311

Siemon — Italia
Milano
Tel: +39 (02) 64 672 209