

# SkinnyPatch™ 6A UTP Modular Cords - International

Siemon's SkinnyPatch 6A UTP Modular Cords deliver category 6A performance with a reduced cable diameter for improved airflow and increased flexibility in high-density patching areas. The cord's smaller 28 AWG stranded copper construction offers a significantly tighter bend radius for easier cable routing and enhanced cable management, providing pathway space savings in racks and cabinets while facilitating moves, adds and changes in tight spaces. SkinnyPatch 6A UTP Modular Cords exceed ANSI/TIA-568.2-D and ISO/IEC 11801-1 Ed1.0 performance standards. These cords also feature Siemon's patented metallic isolator for exceptional NEXT performance and innovative 360-degree crimp for excellent plug-to-cable strain relief.

Jacket meets flame resistance requirements for both CM and LSOH

Features a nominal OD of 0.21 in. (5.3 mm) for improved airflow and flexibility in high-density applications

Ultra slim boot further facilitates high-density patching

Integral latch guard protects plug from snagging when pulling through pathways or cable managers

Patented metallic isolator inside plug for consistent, exceptional category 6A NEXT performance

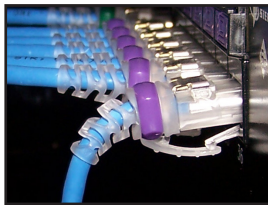
Internal load bar provides consistent terminations and ideal pair geometry

**Color Coding**  
Optional colored clips enable field color coding and can be easily snapped into place without having to disconnect cords

**STANDARDS COMPLIANCE**

- TIA-568.2-D\*
- TIA-968-B
- TIA-1096-A
- ISO/IEC 11801-1 Ed1.0\*
- IEC 60603-7
- CM: cUL US Listed
- LSOH: IEC 60332-1, 60754, 61034

\*Patch cord length is limited to 8 meters for a maximum channel length of 98 meters.



**Excellent Bend Relief**  
Boot and integrated strain relief ensures minimum bend radius for category 6A performance



**Diameter and Airflow**  
Smaller diameter cable significantly reduces bundle and pathway fill for space savings and offers improved airflow, accessibility and cable management in high-density applications



**Construction**  
SkinnyPatch offers 40% size reduction over traditional 6A UTP cords for smaller bend radius and easier routing in tight spaces

## APPLICATIONS SUPPORT

- 10GBASE-T
  - 1000BASE-T
  - 100BASE-T
  - 10BASE-T
  - HDBASE-T
  - IEEE 802.3af (Type 1 PoE)\*\*
  - IEEE 802.3at (Type 2 PoE)\*\*
  - IEEE 802.3bt (Type 3 PoE)\*\*
  - IEEE 802.3bt (Type 4 PoE)\*\*
  - Power over HDBaseT (PoH)\*\*
- \*\* See table for recommended maximum bundle size

# PRODUCT INFORMATION

## PERFORMANCE SPECIFICATION

ELECTRICAL	
Contact Resistance	20 mΩ
Input to Output DC Resistance	200 mΩ
Min. Dielectric Withstand Voltage (contact to contact)	1000 V DC or AC peak
Insulation Resistance	500 mΩ
Compatibility	Category 6A, 6 and 5e
Current Rating @ 25°C (77°F)	1.5 A
Remote Powering	PoE Type 1, Type 2, Type 3, Type 4
Attenuation De-rating Factor	1.9
MECHANICAL — GENERAL	
Operating Temperature	-20 to 75 °C (-4 to 167 °F)
Flammability Rating	UL 94 - V0
Green Features	RoHS, lead-free, halogen-free, PVC free
Contact Materials	Copper alloy with contact plating of 50 microinches gold or equivalent
Plastic Materials	Flame retardant thermoplastic
Marking	P/N, length, performance level

MECHANICAL — PLUG	
Number of Plug Insertion Cycles	750
Min. Plug Retention Force	50N (11.24 lbf)
Plug Compatibility	Compatible with RJ45 outlets
MECHANICAL — CABLE	
Wire Size (Nominal)	28 AWG 7x36 Stranded bare copper
Cable O.D. (Nominal)	5.3mm (0.21 in.)
Wiring	T568A/B
Jacket Type	CM/LSOH
Bend Radius	25mm (1.0 in.)

MAXIMUM RECOMMENDED BUNDLE SIZE		
Application	Current per Pair (mA)	28 AWG Patch Cords
Type 1 PoE (15.4 W)	350	96
Type 2 PoE (30 W)	600	96
Type 3 PoE (60 W)	600	48
Type 4 PoE (90 W)	960	24
PoH (100 W)	1000	24

## Ordering Information

SP6A-(XX)M-(XX)(X)-----

### Length

- 01 = 1m (3.3 ft.)
- 1.5 = 1.5m (5 ft.)
- 02 = 2m (6.6 ft.)
- 03 = 3m (9.8 ft.)
- 04 = 4m (13.1 ft.)
- 05 = 5m (16.5 ft.)

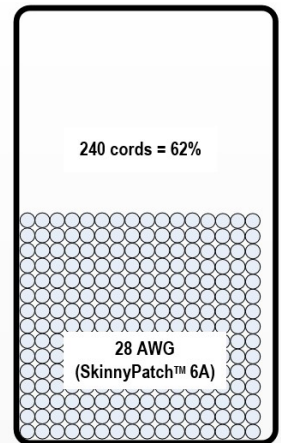
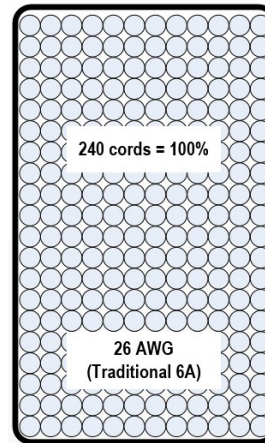
### Bulk Package

- Blank = Non Bulk
- B = Bulk (Quantity 100)

### Jacket Color

- |            |             |             |
|------------|-------------|-------------|
| 01 = Black | 04 = Gray   | 07 = Green  |
| 02 = White | 05 = Yellow | 08 = Violet |
| 03 = Red   | 06 = Blue   | 09 = Orange |

SkinnyPatch Category 6A double-ended, 4-pair, 28 AWG UTP stranded modular patch-cord, T568A/B, clear boot.



Fill Comparison: Category 6A UTP Cords in a 6 in. x 3.5 in. (152.4 x 89mm) cable manager

CLIP-(XX)..... Color coding clip, bag of 25

### Clip Color

- |            |             |             |
|------------|-------------|-------------|
| 01 = Black | 04 = Gray   | 07 = Green  |
| 02 = White | 05 = Yellow | 08 = Violet |
| 03 = Red   | 06 = Blue   | 09 = Orange |



Because we continuously improve our products, Siemon reserves the right to change specifications and availability without prior notice.

**North America**  
P: (1) 860 945 4200

**Asia Pacific**  
P: (61) 2 8977 7500

**Latin America**  
P: (571) 657 1950/51/52

**Europe**  
P: (44) 0 1932 571771

**China**  
P: (86) 215385 0303

**India Middle East**  
P: (971) 4 3689743

**Siemon Interconnect Solutions**  
P: (1) 860 945 4213  
www.siemon.com/SIS

WWW.SIEMON.COM

