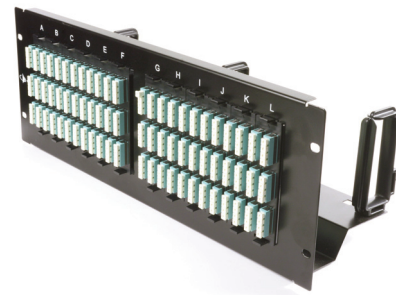


RIC Fiber Panels

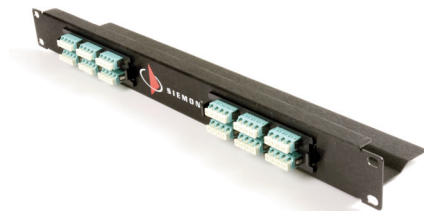
Siemon RIC Fiber panels are ideal for use with racks, cabinets, wall mount cabinets, zone enclosures and ceiling enclosures to support various fiber applications in Data Centers, LANs (Local Area Networks) and PONs (Passive Optical Networks). The RIC panels are available in 1 RMS and 4 RMS sizes, 19 inch rack mount and accept Siemon's Quick-Pack® fiber adapter plates, modules and cassettes.

Ordering Information:

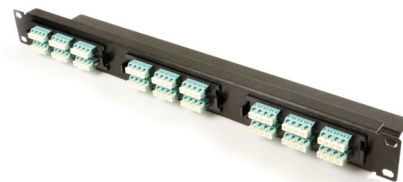
Part #	Description
RIC-PNL2-4U-01	4 RMS, 12 Quick-Pack openings, silkscreen port identification, includes mounting hardware and expanded depth rear fiber managers Color: Black, Material: Steel



Part #	Description
RIC-PNL2-1U-01	1 RMS, 2 Quick-Pack openings, includes mounting hardware Color: Black, Material: Aluminum



Part #	Description
RIC-PNL3-1U-01	1 RMS, 3 Quick-Pack openings, includes mounting hardware Color: Black, Material: Aluminum



NORTH AMERICA

Watertown, CT USA
Phone (1) 860 945 4200 US
Phone (1) 888 425 6165 Canada

EUROPE/MIDDLE EAST/AFRICA

Surrey, England
Phone (44) 0 1932 571771

ASIA/PACIFIC

Shanghai, P.R. China
Phone (86) 21 5385 0303

LATIN AMERICA

Bogota, Colombia
Phone (571) 657 1950/51/52