

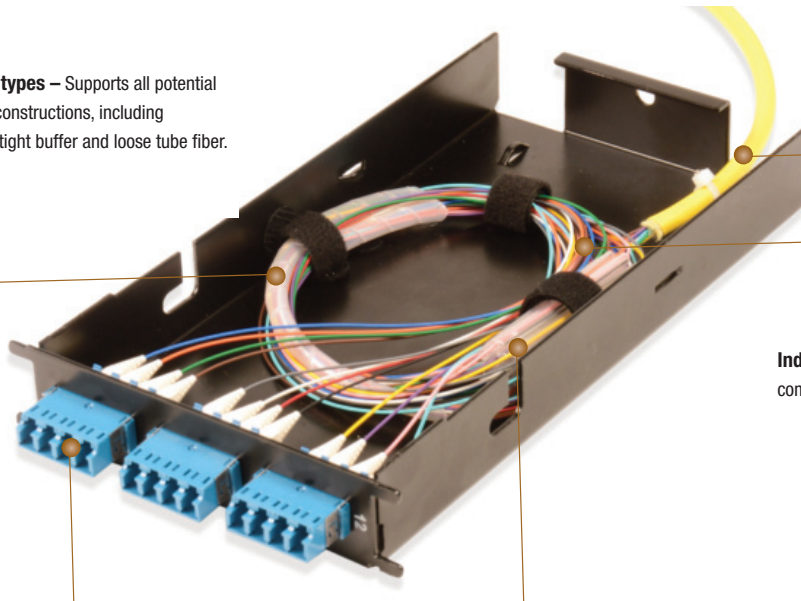
Quick-Pack® RIC Splice Cassette (RSC)

Siemon's Quick-Pack fiber splice cassettes are designed for use with Siemon's expanded RIC enclosure, eliminating the need for dedicated splicing trays while improving accessibility to individual splices. The use of Quick-Pack Splice cassettes doubles fiber enclosure capacity vs. traditional splicing trays and enables fusion splicing away from the rack in a suitable workspace. Available in multimode and singlemode fiber options, each pigtail splice cassette is available in a 6, 8, 12, 16 or 24-fiber capacity for supporting up to 288 fusion splices in a 4U space. They come preloaded with LC or SC adapters with or without 900µm pigtail assemblies.

Multiple fiber types – Supports all potential incoming fiber constructions, including indoor/outdoor, tight buffer and loose tube fiber.

Superior Fiber Strain Relief and Protection

Features cable ties for strain relief, as well as protective tubing for incoming fiber.



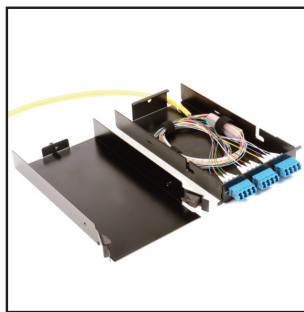
Individual Fibers – Color coded in compliance to TIA598

Preloaded for Fast Deployment – Preloaded with adapters and pigtails for quick and easy single or mass fusion splicing applications without the need for splice trays.

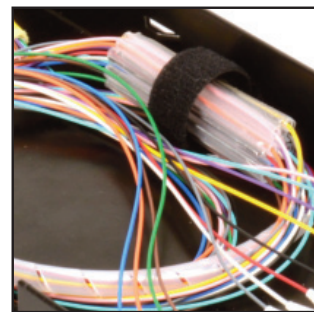
Splice Protection – Each cassette comes with the appropriate number and type of fiber heat-shrink splice protectors to ensure proper splice protection.



Feature-Rich Enclosure – Quick-Pack splice cassettes install easily into Expanded RIC enclosures available in 2U (4 or 6 cassette), 3U (8 cassette) and 4U (12 modules) with superior port identification and security.



Cost Effective and Accessible – Individual splice cassettes with built-in storage are a cost-effective alternative to traditional splice trays and feature easy-to-remove covers for enhanced accessibility.



User-Friendly Design – Simplified design with hook and loop splice sleeve holders enables easy slack management and quick deployment for a variety of splice configurations.

Ordering Information:

RSC(XX)-(XX)(X)(XX)(X)-B1Quick-Pack® RIC Splice Cassette, Black

Fiber Count

- 06 = 6 (SC only)
- 08 = 8 (SC only)
- 12 = 12
- 16 = 16 (LC only)
- 24 = 24 (LC only)

Connector Type

- SC = SC
- LC = LC
- LS = Shuttered LC

Endface

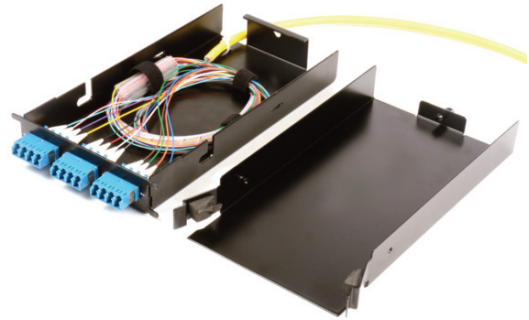
- P = PC (Multimode only)
- U = UPC (Singlemode only)
- A = APC (Singlemode only)

Fiber Type

- A = 900µm
- X = Empty (No fiber)

Performance

- 62 = 62.5/125 OM1, Beige
- 5L = 50/125 OM3, Aqua
- 5V = 50/125 OM4, Aqua
- EV = 50/125 OM4, Erika Violet
- SM = Singlemode, OS2 (UPC=Blue, APC=Green)



PERFORMANCE SPECIFICATIONS

Performance	Max Insertion Loss (dB)		Min. Return Loss (dB)	
	Max	Type	Max	Type
62.5/125 OM1	0.50	0.15	-15	-30
50/125 OM3	0.25	0.10	-30	-35
50/125 OM4	0.25	0.10	-30	-35
OS2 UPC	0.40	0.10	-55	-60
OS2 APC	0.40	0.10	-65	-70

SPLICE CAPACITY

Interface	RIC 24E	RIC 36E	RIC 48E	RIC 72	FCP3-DWR
LC	96	144	192	288	72
SC	48	72	96	144	36

Because we continuously improve our products, Siemon reserves the right to change specifications and availability without prior notice.

Worldwide Headquarters

North America
Watertown, CT USA
Phone (1) 860 945 4200

Regional Headquarters

Europe Russia Africa
Chertsy, Surrey, England
Phone (44) 0 1932 571771

Regional Headquarters

China
Shanghai, P.R. China
Phone (86) 215385 0303

Regional Headquarters

Latin America
Bogota, Colombia
Phone (571) 657 1950/51/52

Regional Headquarters

India Middle East
Dubai, United Arab Emirates
Phone (971) 4 3689743

Regional Headquarters

Asia Pacific
Sydney, Australia
Phone (61) 2 8977 7500

Siemon Interconnect Solutions

Watertown, CT USA
Phone (1) 860 945 4213 US
www.siemon.com/SIS