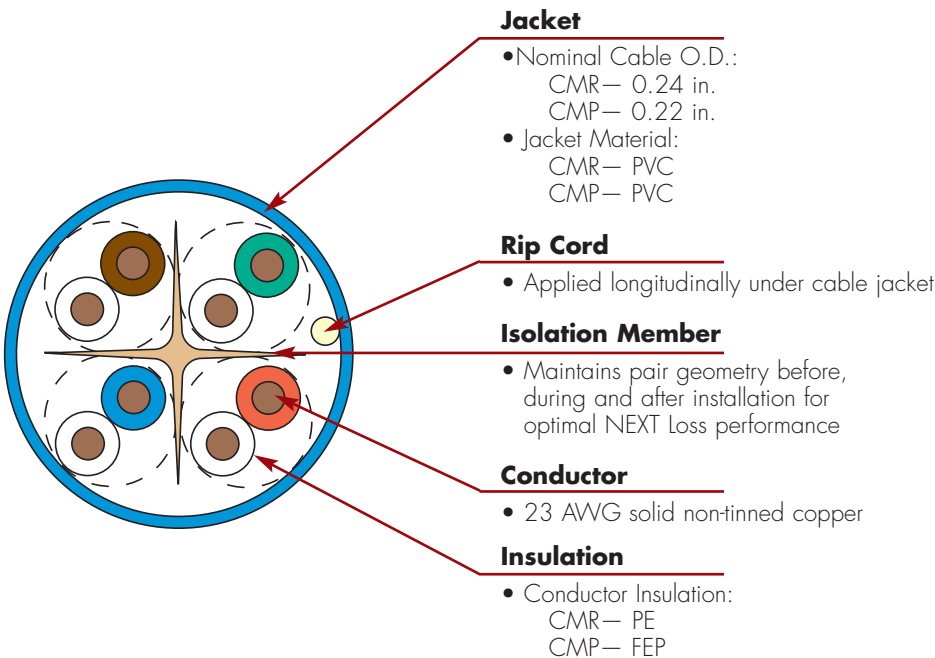
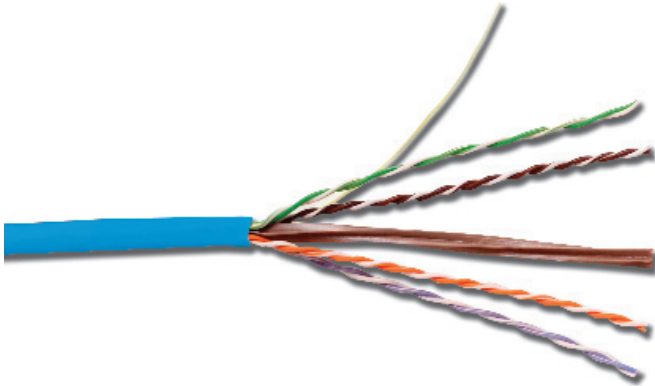


PREMIUM 6 UTP CABLE - US

Siemon's Premium 6 cable provides performance exceeding category 6 transmission levels for both ANSI/TIA-568-C.2 and ISO/IEC 11801 industry standards. Combine our high performance category 6 connectivity with Premium 6 cable and the result is a system with superior electrical performance. The additional headroom above industry standard transmission levels provides a high level of immunity to installation variables ensuring reliable application support over the life of your cabling system.



HIGHLIGHTS

- Transmission performance verified by UL
- Reverse sequential length markings
- Round jacket
- Center isolation member
- Jacket material is lead free
- Supports any application designed for category 6 or lower cabling

PACKAGING

- 1000 ft. reel in a box
- Weight
CMR — 34 lbs/1000 ft.
CMP — 35 lbs/1000 ft.

COMPLIANCE

- ISO/IEC 11801: 2002 (Category 6)
- ANSI/TIA-568-C.2 (Category 6)
- IEC 61156-5:2002 (Category 6)
- c(UL)us CMP and CSA FT6
- c(UL)us CMR and CSA FT4

- 10BASE-T
- 100BASE-T
- 1000BASE-T

PRODUCT INFORMATION

ELECTRICAL SPECIFICATIONS

DC Resistance	<9.38 Ω/100m
DC Resistance Unbalance	3%
Mutual Capacitance	5.6 nF/100m
Capacitance Unbalance	<330 pF/100m
Characteristic Impedance (ohms)	1-100 MHz: 100 ± 15% 101-250 MHz: 100 ± 20%
NVP	CMP—70% CMR—68%
TCL	30-10 log(f/100) dB
Delay Skew	≤25ns

PHYSICAL PROPERTIES

	CMP	CMR
Pulling Tension (max)	110N (25 lbf)	110N (25 lbf)
Bend Radius (min)	22.9mm (0.9 in.)	35.6mm (1.4 in.)
Installation Temperature	0 to 60°C (+32 to 140°F)	0 to 60°C (+32 to 140°F)
Storage Temperature	-20 to 75°C (-4 to 167°F)	-20 to 75°C (-4 to 167°F)
Operating Temperature	-20 to 60°C (-4 to 140°F)	-20 to 60°C (-4 to 140°F)

TRANSMISSION PERFORMANCE



GUARANTEED WORST CASE



SIEMON TYPICAL

Frequency (MHz)	Insertion Loss (dB)		NEXT (dB)		PSNEXT (dB)		ACR (dB)		PSACR (dB)		ACR-F (dB)		PSACR-F (dB)		Return Loss (dB)		Propagation Delay (ns)	
	1	2	1	2	1	2	1	2	1	2	1	2	1	2	1	2	1	2
1	2.0	1.7	81.3	103.8	79.3	98.6	79.3	102.2	77.3	96.9	74.8	94.0	71.8	88.9	20.0	29.5	570	491
4	3.7	3.4	72.3	94.8	70.3	87.6	68.6	91.3	66.6	84.2	62.7	82.2	59.7	77.0	23.0	34.8	552	486
10	5.8	5.5	66.3	85.2	64.3	78.8	60.5	79.7	58.5	73.3	54.8	74.6	51.8	69.3	25.0	35.3	545	481
16	7.3	7.0	63.2	85.8	61.2	78.2	55.9	78.8	53.9	71.2	50.7	71.0	47.7	65.6	25.0	36.8	543	480
20	8.2	7.9	61.8	82.5	59.8	75.7	53.6	74.7	51.6	67.8	48.7	69.3	45.7	64.0	25.0	36.6	542	480
31.25	10.4	9.9	58.9	82.2	56.9	74.2	48.5	72.3	46.5	64.3	44.9	66.8	41.9	61.2	23.6	36.6	540	479
62.5	14.9	14.2	54.4	74.3	52.4	66.0	39.4	60.1	37.4	51.9	38.8	62.2	35.8	57.0	21.5	34.6	539	478
100	19.2	18.3	51.3	70.8	49.3	62.9	32.1	52.5	30.1	44.6	34.8	56.1	31.8	49.3	20.1	39.9	538	477
160	24.8	23.6	48.2	70.0	46.2	63.4	23.4	46.4	21.4	39.9	30.7	49.8	27.7	42.3	18.7	33.4	537	477
200	28.1	26.4	46.8	70.0	44.8	63.2	18.7	43.6	16.7	36.8	28.7	48.9	25.7	41.4	18.0	32.2	537	477
250	31.9	30.5	45.3	67.5	43.3	59.6	13.5	37.0	11.5	29.1	26.8	48.0	23.8	40.3	17.3	33.4	536	477
300*	35.3	33.8	44.1	67.1	42.1	58.9	8.8	33.3	6.8	25.1	25.2	48.1	22.2	42.0	16.8	33.1	536	477
400*	41.7	39.8	42.3	63.4	40.3	55.2	0.6	23.6	-1.4	15.4	22.7	43.4	19.7	37.3	15.9	31.2	536	477
500*	47.5	45.0	40.8	58.0	38.8	50.3	-6.7	13.0	-8.7	5.3	20.8	41.0	17.8	33.3	15.2	28.7	536	476
550*	50.2	47.8	40.2	57.2	38.2	51.1	-10.0	9.4	-12.0	3.3	19.9	38.3	16.9	33.1	14.9	31.0	536	476
600*	52.9	50.3	39.6	57.5	37.6	50.2	-13.2	7.2	-15.2	-0.1	19.2	36.5	16.2	30.6	14.7	30.0	535	477

*Values for frequencies above industry requirements are for information only

All performance based on 100 meters (328 ft.).

Because we continuously improve our products, Siemon reserves the right to change specifications and availability without prior notice.

Premium 6 Plenum 4-Pair UTP Cable (CMP, CSA Type FT6):

9C6P4-E4-(XX)-RBA*Plenum, 1000 ft. Reel-In-Box

Premium 6 Riser 4-Pair UTP Cable (CMR, CSA Type FT4):

9C6R4-E4-(XX)-RBA*Riser, 1000 ft. Reel-In-Box

Use (XX) to specify jacket color: 02 = white*, 03 = red, 04 = gray, 05 = yellow, 06 = blue*, 07 = green

*Cable colors highlighted in red indicate FOCUS products which are readily available. Other colors may have extended lead times and minimum purchase requirements.

The Americas
Watertown, CT USA
Phone (1) 860 945 4200

Europe/Middle East/Africa
Surrey, England
Phone (44) 0 1932 571771

Asia/Pacific
Shanghai, P.R. China
Phone (86) 21 6390 6778

Japan
Tokyo, Japan
Phone (03) 5437 1580