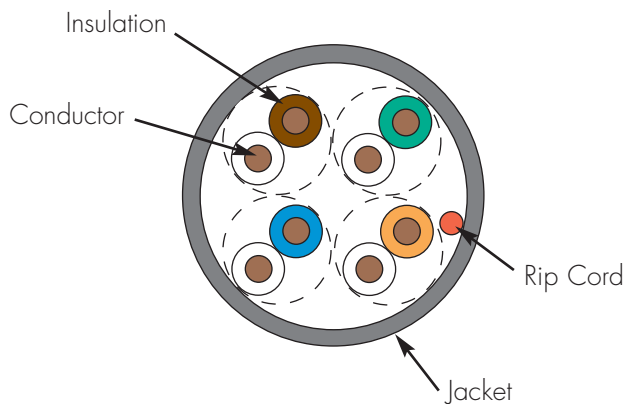
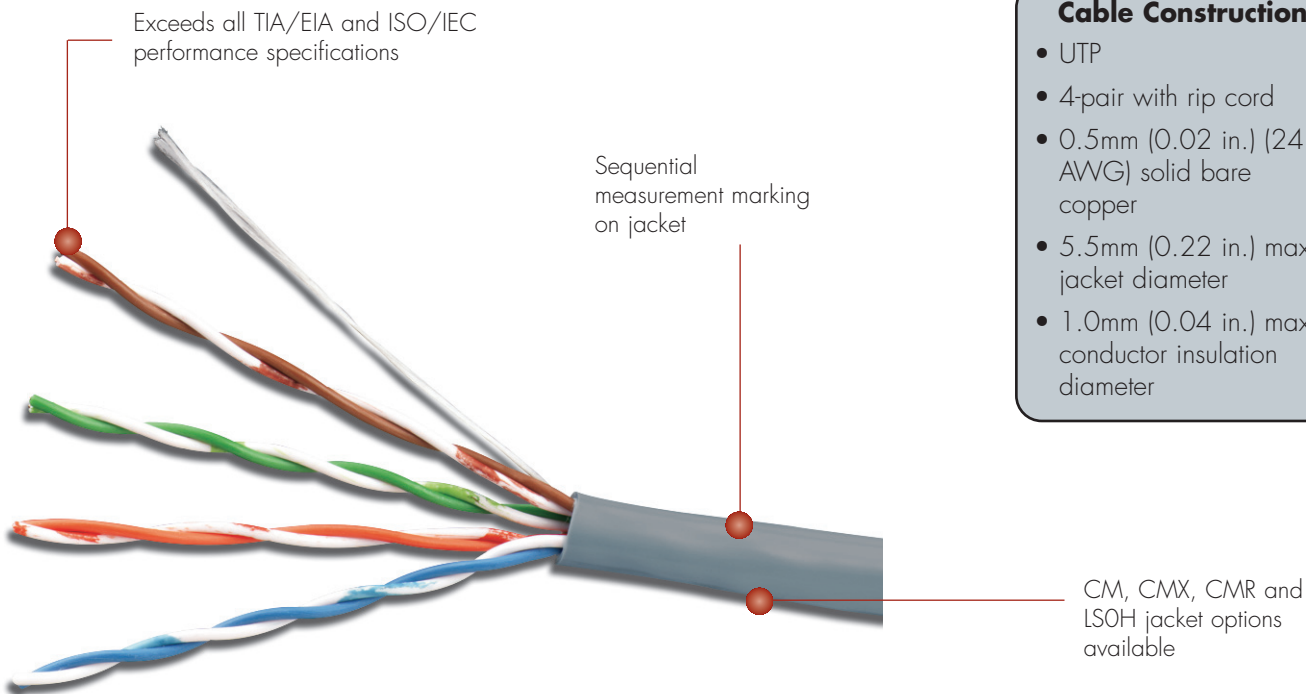


# PREMIUM 5e<sup>®</sup> UTP CABLE

Siemon premium 5e UTP cable perfectly complements the performance of our category 5e outlets. Siemon cable exceeds all TIA/EIA and ISO/IEC requirements for category 5e/class D transmission performance. Utilizing Siemon cable is the ideal way to ensure optimum channel performance and is essential for a complete end-to-end warranted system.



CABLE — INTERNATIONAL



*Cable packaged in a Reelex box (305m) to protect product during shipping and facilitate tangle-free installation*

- ### Cable Construction
- UTP
  - 4-pair with rip cord
  - 0.5mm (0.02 in.) (24 AWG) solid bare copper
  - 5.5mm (0.22 in.) max jacket diameter
  - 1.0mm (0.04 in.) max conductor insulation diameter

- ### Compliance
- ISO/IEC 11801:2002 (category 5e)
  - ANSI/TIA/EIA-568-B.2
  - IEC 61156-6:2002
  - LSOH: IEC 60332-1, IEC 60754, and IEC 61034
  - UL CMX
  - UL CM
  - UL CMR and CSA FT4

CONNECTING THE WORLD TO A HIGHER STANDARD

WWW.SIEMON.COM





## ELECTRICAL SPECIFICATIONS

DC Resistance	<9.38 Ω/100m
DC Resistance Unbalance	5%
Mutual Capacitance	5.6 nF/100m
Capacitance Unbalance	<330 pF/100m
Characteristic Impedance (ohms)	1 - 100 MHz: 100 ± 15% 100 - 350 MHz: 100 ± 22%
NVP	70%
Delay Skew	≤ 40ns

## PHYSICAL PROPERTIES

	LSOH	CMR/CM/CMX
Pulling Tension (max)	110N (25 lbf)	110N (25 lbf)
Bend Radius (min)	25mm (1 in.)	25mm (1 in.)
Installation Temperature	0 to 60°C (+32 to 140°F)	-36 to 60°C (-32 to 140°F)
Storage Temperature	-20 to 75°C (-4 to 167°F)	-34 to 75°C (-30 to 167°F)
Operating Temperature	-20 to 60°C (-4 to 140°F)	-34 to 60°C (-30 to 140°F)

## TRANSMISSION PERFORMANCE

■ TIA/EIA & ISO/IEC

□ SIEMON TYPICAL

Frequency (MHz)	Insertion Loss (dB)		NEXT (dB)*		PS NEXT (dB)		ACR (dB)		PSACR (dB)		ACR-F (dB)		PS ACR-F (dB)		Return Loss (dB)		Propagation Delay (ns)	
1.0	2.1	1.9	65.3	79.3	62.3	72.3	63.2	77.4	60.2	70.4	63.8	84.8	60.8	78.8	20.0	27.0	570	545
4.0	4.1	3.7	56.3	70.0	53.3	63.3	52.2	66.6	49.2	59.6	51.8	72.8	48.8	66.8	23.0	32.0	552	527
10.0	6.5	5.8	50.3	64.3	47.3	57.3	43.8	58.5	40.8	51.5	43.8	64.8	40.8	58.8	25.0	32.0	545	520
16.0	8.3	7.4	47.2	61.2	44.2	54.2	39.0	53.8	36.0	46.8	39.7	60.7	36.7	54.7	25.0	32.0	543	518
20.0	9.3	8.3	45.8	59.8	42.8	52.8	36.5	51.5	33.5	44.5	37.8	58.8	34.8	52.8	25.0	32.0	542	517
31.25	11.7	10.5	42.9	56.9	39.9	49.9	31.1	46.4	28.1	39.4	33.9	54.9	30.9	48.9	23.6	30.0	540	515
62.5	17.0	15.0	38.4	52.4	35.4	45.4	21.4	37.4	18.4	30.4	27.9	48.9	24.9	42.9	21.5	30.0	539	514
100.0	22.0	19.3	35.3	49.3	32.3	42.3	13.3	30.0	10.3	23.0	23.8	44.8	20.8	38.8	20.1	30.0	538	513
160.0*	28.6	25.1	32.2	46.2	29.2	39.2	3.7	21.1	0.7	14.1	19.7	40.7	16.7	34.7	18.7	28.0	537	512
200.0*	32.4	28.1	30.8	44.8	27.8	37.8	-1.6	16.7	-4.6	9.7	17.8	38.8	14.8	32.8	18.0	27.0	537	512
250.0*	36.9	31.4	29.3	43.3	26.3	36.3	-7.5	11.9	-10.5	4.9	15.8	36.8	12.8	30.8	17.3	26.0	536	511
300.0*	41.0	34.5	28.1	42.1	25.1	35.1	-12.8	7.6	-15.8	0.6	14.3	35.3	11.3	29.3	16.8	25.0	536	511
350.0*	44.9	39.4	27.1	41.1	24.1	34.1	-17.7	1.7	-20.7	-5.3	12.9	33.9	9.9	27.9	16.3	24.0	536	511

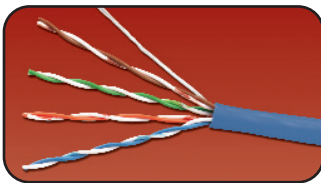
\*Values above 100 MHz are informational only.

All performance based on 100 meters (328 ft.).

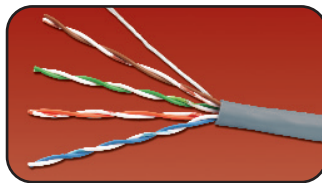
## Premium 5e® UTP 4-Pair Solid Cable:

- 9C5R4-E2 .....PVC (CMR, CSA FT4), Blue Jacket, 305m (1000 ft.) Reelex
- 9C5M4-E2 .....PVC (CM), Gray Jacket, 305m (1000 ft.) Reelex
- 9C5X4-E2 .....PVC (CMX, IEC 60332-1), Gray Jacket, 305m (1000 ft.) Reelex
- 9C5L4-E2 .....LSOH (IEC 60332-1), Violet Jacket, 305m (1000 ft.) Reelex

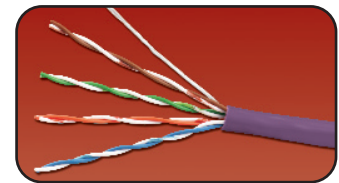
Other cable lengths also available: Add "-5CR" for 500m (1640 ft.) Reel, "-1KR" for 1000m (3,281 ft.) Reel



9C5R4-E2



9C5X4-E2/9C5M4-E2



9C5L4-E2

### For related product information request Spec Sheet(s):

- MAX® 5e Modules (PROD-SS-MPD)
- MC® 5e Modular Patch Cords (PROD-SS-MC5)
- HD® 5 Patch Panels (PROD-SS-HD5)
- MAX Patch Panels (PROD-SS-MXP)
- S110® Connection System (PROD-SS-S10)
- S110 Patch Plugs (PROD-SS-10P)

Because we are continuously improving our products, Siemon reserves the right to change specifications and availability without prior notice.

MAX®, HD®, S110®, MC® and Premium 5e® are trademarks of Siemon

**The Americas**  
Watertown, CT USA  
Phone (1) 860 945 4200

**Europe/Middle East/Africa**  
Surrey, England  
Phone (44) 0 1932 571771

**Asia/Pacific**  
Shanghai, P.R. China  
Phone (86) 21 6390 6778

**Japan**  
Tokyo, Japan  
Phone (03) 5405 7650