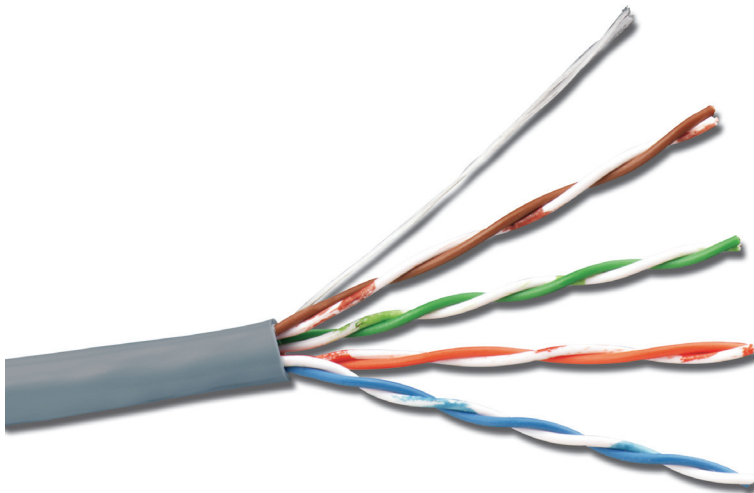


PREMIUM 5e™ UTP 4-Pair Cable (US)

Siemon Premium 5e UTP cable perfectly complements the performance of our category 5e outlets. Siemon cable exceeds all ANSI/TIA and ISO/IEC requirements for category 5e/class D transmission performance. Utilizing Siemon cable is the ideal way to ensure optimum channel performance and is essential for a complete end-to-end premium 5e warranted system.



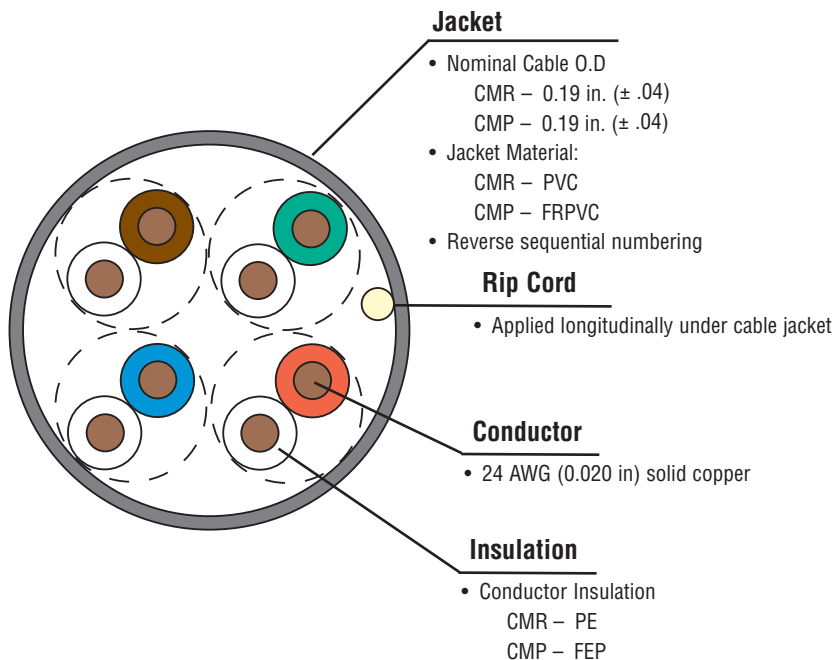
COMPLIANCE

- ISO/IEC 11801:Ed 2.2 (Category 5e)
- ANSI/TIA-568-C.2 (Category 5e)
- IEC 61156-5 (Category 5e)
- UL CMP and CSA FT6
- UL CMR and CSA FT4

ETHERNET APPLICATIONS SUPPORT

- 1000BASE-T
- 1000BASE-T
- 10BASE-T
- IEEE 802.3af (Type 1 PoE)
- IEEE 802.3at (Type 2 PoE)
- IEEE 802.3bt (Type 3 PoE)
- IEEE 802.3bt (Type 4 PoE)
- Power over HDBaseT (PoH)

Supports any application designed for category 5e or lower.



Product Information

ELECTRICAL SPECIFICATIONS

DC Resistance	<9.38Ω/100m
DC resistance Unbalance	5%
Mutual Capacitance	5.6 nF/100m
Capacitance Unbalance	<330 pF/100m
Characteristic Impedance (ohms)	1-100 MHz: 100 ± 15% 100-350 MHz: 100 ± 22%
NVP	CMP - 70% CMR - 68%
TCL	40-10 x log(f) dB
Delay Skew	≤35ns

PHYSICAL PROPERTIES

	CMP	CMR
Pulling Tension (max)	110N (25 lbf)	110N (25 lbf)
Bend Radius (min)	20 mm (0.8 in.)	20mm (0.8 in.)
Installation Temperature	0 to 60°C (+32 to 140°F)	0 to 60°C (+32 to 140°F)
Storage Temperature	-20 to 75°C (-4 to 167°F)	-20 to 75°C (-4 to 167°F)
Operating Temperature	-20 to 60°C (-4 to 140°F)	-20 to 60°C (-4 to 140°F)

TRANSMISSION PERFORMANCE

GUARANTEED WORSE CASE

SIEMON TYPICAL

Frequency (MHz)	Insertion Loss (dB)		NEXT (dB)		PS NEXT (dB)		ACR (dB)		PSACR (dB)		ACR-F (dB)		PS ACR-F (dB)		Return Loss (dB)		Propagation Delay (ns)	
	Guaranteed	Typical	Guaranteed	Typical	Guaranteed	Typical	Guaranteed	Typical	Guaranteed	Typical	Guaranteed	Typical	Guaranteed	Typical	Guaranteed	Typical	Guaranteed	Typical
1.0	2.1	1.9	68.3	79.3	66.3	72.3	66.2	77.4	64.2	70.4	67.8	84.8	65.8	78.8	20.0	27.0	550	545
4.0	4.1	3.7	59.3	70.3	57.3	63.3	55.2	66.6	53.2	59.6	55.7	72.8	53.7	66.8	23.3	32.0	532	527
10.0	6.5	5.8	53.3	64.3	51.3	57.3	46.9	58.5	44.9	51.5	47.8	64.8	45.8	58.8	25.5	32.0	525	520
16.0	8.2	7.4	50.3	61.2	48.3	54.2	42.1	53.8	40.1	46.8	43.7	60.7	41.7	54.7	25.5	32.0	523	518
20.0	9.2	8.3	48.8	59.8	46.8	52.8	39.6	51.5	37.6	44.5	41.7	58.8	39.7	52.8	25.5	32.0	522	517
31.25	11.5	10.5	45.9	56.9	43.9	49.9	34.4	46.4	32.4	39.4	37.9	54.9	35.9	48.9	24.4	30.0	520	515
62.5	16.4	15.0	41.4	52.4	39.4	45.4	24.9	37.4	22.9	30.4	31.8	48.9	29.8	42.9	22.7	30.0	519	514
100.0	21.0	19.3	38.3	49.3	36.3	42.3	17.3	30.0	15.3	23.0	27.8	44.8	25.8	38.8	21.5	30.0	518	513
160.0*	26.8	25.1	35.3	46.2	33.3	39.2	8.4	21.1	6.4	14.1	23.7	40.7	21.7	34.7	20.4	28.0	517	512
200.0*	30.2	28.1	33.8	44.8	31.8	37.8	3.6	16.7	1.6	9.7	21.7	38.8	19.7	32.8	19.8	27.0	517	512
250.0*	34.0	31.4	32.3	43.3	30.3	36.3	-1.6	11.9	-3.6	4.9	19.8	36.8	17.8	30.8	19.2	26.0	516	511
300.0*	37.4	34.5	31.2	42.1	29.2	35.1	-6.3	7.6	-8.3	0.6	18.2	35.3	16.2	29.3	18.8	25.0	516	511
350.0*	40.7	39.4	30.2	41.1	28.2	34.1	-10.5	1.7	-12.5	-5.3	16.9	33.9	14.9	27.9	18.4	24.0	516	511

*Values above industry requirements are for information only.

All performance based on 100 meters (328 ft.).

ORDERING SPECIFICATIONS

Part #	Description
9C5P4-E2-(XX)-RXA	Plenum (CMP, CSA FT6) 305m (1000 ft.), Reelex
9C5R4-E2-(XX)-RXA	Riser (CMR, CSA FT4) 305m (1000 ft.), Reelex

Use (XX) to specify jacket color: 01= black, 02 = white, 03 = red, 04 = gray, 05 = yellow, 06 = blue, 07 = green, 08= violet, 09 = orange

**Worldwide Headquarters
North America**
Watertown, CT USA
Phone (1) 860 945 4200 US
Phone (1) 888 425 6165

**Regional Headquarters
EMEA**
Europe/Middle East/Africa
Surrey, England
Phone (44) 0 1932 571771

**Regional Headquarters
Asia/Pacific**
Shanghai, P.R. China
Phone (86) 21 5385 0303

**Regional Headquarters
Latin America**
Bogota, Colombia
Phone (571) 657 1950