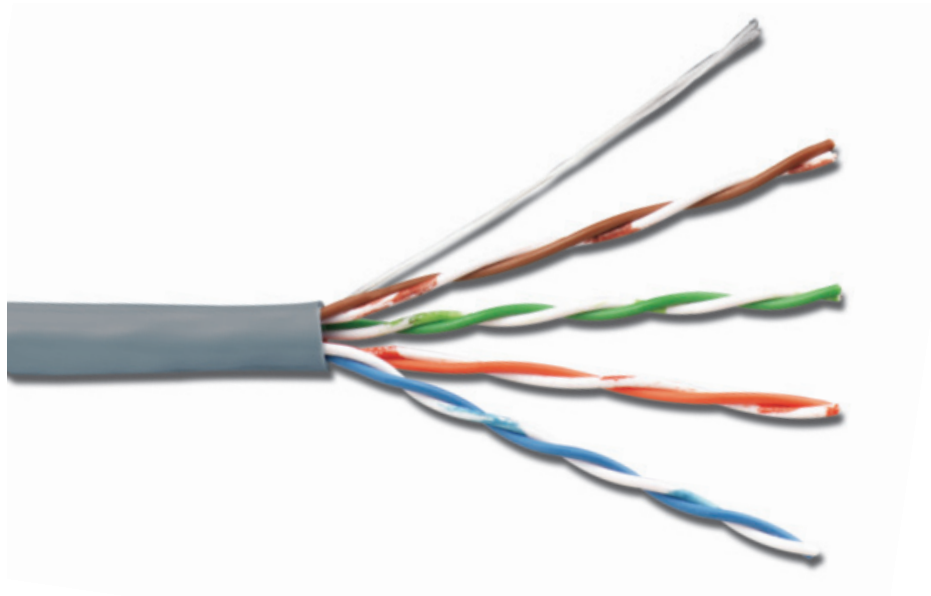


# PREMIUM 5E UTP 4-pair Cable (INT)

Siemon Premium 5e UTP cable perfectly complements the performance of our category 5e outlets. Siemon cable exceeds all ANSI/TIA and ISO/IEC requirements for category 5e/class D transmission performance. Utilizing Siemon cable is the ideal way to ensure optimum channel performance and is essential for a complete end-to-end warranted system.



## CABLE FEATURES:

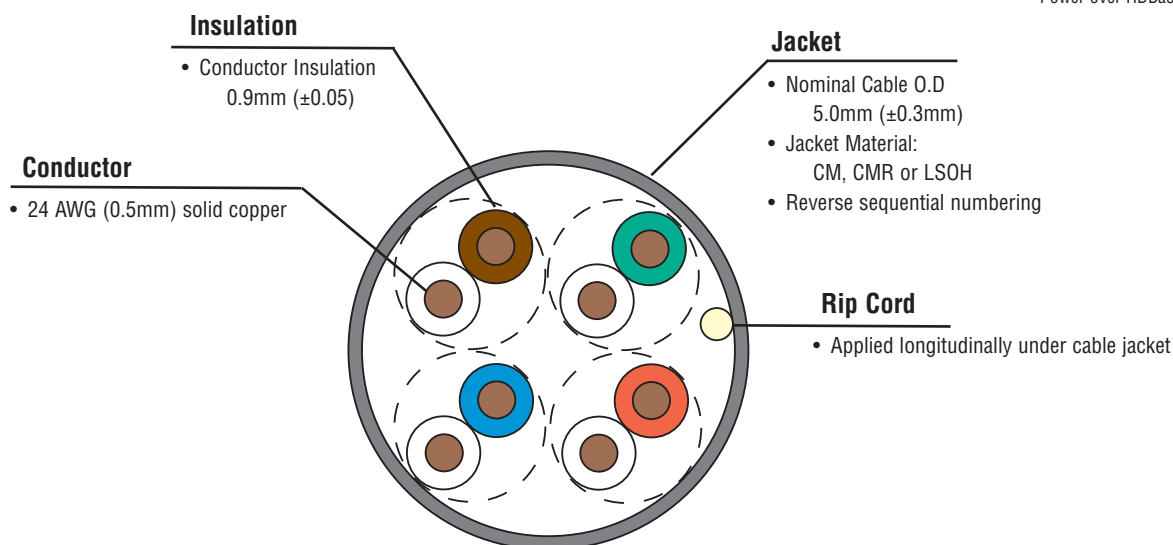
- UTP
- Nominal jacket OD: 5.0mm (0.20 in.)
- 24 AWG 0.5mm (0.02 in.) solid bare copper
- 1.0mm (0.039 in.) max conductor insulation
- Reverse sequential numbering

## STANDARDS COMPLIANCE:

- ISO/IEC 11801-1 Ed 1.0
- ANSI/TIA-568.2-D (Category 5e)
- IEEE 802.3
- IEC 61156-5 Ed 2.1
- UL CM, IEC 60332-1, EN50575 Class Eca
- UL CMR and CSA FT4
- LSOH: IEC 60332-1, IEC 60332-3-22, IEC 60754 and IEC 61034, EN 50575 Class Eca

## APPLICATIONS SUPPORT

- 1000BASE-T
- 100BASE-T
- 10BASE-T
- IEEE 802.3af (Type 1 PoE)
- IEEE 802.3at (Type 2 PoE)
- IEEE 802.3bt (Type 3 PoE)
- IEEE 802.3bt (Type 4 PoE)
- Power over HDBaseT (PoH)



# Product Information

Part #	Description
9C5R4-E2	PVC (CMR, CSA FT4), blue jacket, 305m (1000 ft.) Reelex
9C5M4-E2	PVC (CM), gray jacket, Class E <sub>ca</sub> 305m (1000 ft.) Reelex
9C5L4-E2	LSOH (IEC 60332-3-22), violet jacket, Class E <sub>ca</sub> 305m (1000 ft.) Reelex

Other cable lengths also available:  
Add "-5CR" for 500m (1640 ft.) reel, "-1KR" for 1000m (3280 ft.) reel

## ELECTRICAL SPECIFICATIONS

DC Resistance	<9.38Ω/100m
DC resistance Unbalance	5%
Mutual Capacitance	5.6 nF/100m
Capacitance Unbalance	<330 pF/100m
Characteristic Impedance (ohms)	1-100 MHz: 100 ± 15% 100-350 MHz: 100 ± 22%
NVP	65%
Delay Skew	≤40ns

## PHYSICAL PROPERTIES

	LSOH	CM/CMR
Pulling Tension (max)	110N (25 lbf)	110N (25 lbf)
Bend Radius (min)	25mm (1 in.)	25mm (1 in.)
Installation Temperature	0 to 60°C (+32 to 140°F)	0 to 60°C (+32 to 140°F)
Storage Temperature	-20 to 75°C (-4 to 167°F)	-20 to 75°C (-4 to 167°F)
Operating Temperature	-20 to 60°C (-4 to 140°F)	-20 to 60°C (-4 to 140°F)

## TRANSMISSION PERFORMANCE

GUARANTEED WORSE CASE
  SIEMON TYPICAL

Frequency (MHz)	Insertion Loss (dB)		NEXT (dB)		PS NEXT (dB)		ACR (dB)		PSACR (dB)		ACR-F (dB)		PS ACR-F (dB)		Return Loss (dB)		Propagation Delay (ns)	
	Guaranteed	Typical	Guaranteed	Typical	Guaranteed	Typical	Guaranteed	Typical	Guaranteed	Typical	Guaranteed	Typical	Guaranteed	Typical	Guaranteed	Typical	Guaranteed	Typical
1.0	2.1	1.9	65.3	79.3	62.3	72.3	63.2	77.4	60.2	70.4	63.8	84.8	60.8	78.8	20.0	27.0	570	545
4.0	4.1	3.7	56.3	70.0	53.3	63.3	52.2	66.6	49.2	59.6	51.8	72.8	48.8	66.8	23.0	32.0	552	527
10.0	6.5	5.8	50.3	64.3	47.3	57.3	43.8	58.5	40.8	51.5	43.8	64.8	40.8	58.8	25.0	32.0	545	520
16.0	8.3	7.4	47.2	61.2	44.2	54.2	39.0	53.8	36.0	46.8	39.7	60.7	36.7	54.7	25.0	32.0	543	518
20.0	9.3	8.3	45.8	59.8	42.8	52.8	36.5	51.5	33.5	44.5	37.8	58.8	34.8	52.8	25.0	32.0	542	517
31.25	11.7	10.5	42.9	56.9	39.9	49.9	31.1	46.4	28.1	39.4	33.9	54.9	30.9	48.9	23.6	30.0	540	515
62.5	17.0	15.0	38.4	52.4	35.4	45.4	21.4	37.4	18.4	30.4	27.9	48.9	24.9	42.9	21.5	30.0	539	514
100.0	22.0	19.3	35.3	49.3	32.3	42.3	13.3	30.0	10.3	23.0	23.8	44.8	20.8	38.8	20.1	30.0	538	513
160.0*	28.6	25.1	32.2	46.2	29.2	39.2	3.7	21.1	0.7	14.1	19.7	40.7	16.7	34.7	18.7	28.0	537	512
200.0*	32.4	28.1	30.8	44.8	27.8	37.8	-1.6	16.7	-4.6	9.7	17.8	38.8	14.8	32.8	18.0	27.0	537	512
250.0*	36.9	31.4	29.3	43.3	26.3	36.3	-7.5	11.9	-10.5	4.9	15.8	36.8	12.8	30.8	17.3	26.0	536	511
300.0*	41.0	34.5	28.1	42.1	25.1	35.1	-12.8	7.6	-15.8	0.6	14.3	35.3	11.3	29.3	16.8	25.0	536	511
350.0*	44.9	39.4	27.1	41.1	24.1	34.1	-17.7	1.7	-20.7	-5.3	12.9	33.9	9.9	27.9	16.3	24.0	536	511

\*Values above 100 MHz are for information only.

All performance based on 100 meters (328 ft.).

Because we continuously improve our products, Siemon reserves the right to change specifications and availability without prior notice.

**Worldwide Headquarters**  
**North America**  
Watertown, CT USA  
Phone (1) 860 945 4200

**Regional Headquarters**  
**Europe Russia Africa**  
Chertsey, Surrey, England  
Phone (44) 0 1932 571771

**Regional Headquarters**  
**China**  
Shanghai, P.R. China  
Phone (86) 215385 0303

**Regional Headquarters**  
**Latin America**  
Bogota, Colombia  
Phone (571) 657 1950/51/52

**Regional Headquarters**  
**India Middle East**  
Dubai, United Arab Emirates  
Phone (971) 4 3689743

**Regional Headquarters**  
**Asia Pacific**  
Sydney, Australia  
Phone (61) 2 8977 7500

**Siemon Interconnect Solutions**  
**Watertown, CT USA**  
Phone (1) 860 945 4213 US  
www.siemon.com/SIS