

# Plug and Play Modules and Adapter Plates

## Siemon Plug and Play Modules

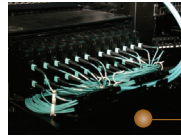
Siemon LC to MTP® and SC to MTP Plug and Play modules provide a quick and efficient way to deploy up to 24 LC or 12 SC fibres in a single module. These factory terminated and tested ports are protected within the housing for reliable high performance and simply connected via 12-strand MTP ports. Modules are available in Multimode (62.5/125 and laser optimised 50/125 OM3/OM4) and Singlemode cable.

**Compact Housing** — Reduces mounting depth for greater cable management space within enclosures

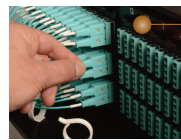
**Optimised Adapter Spacing** — Enables easy finger access to fibre jumper connector latches in high density patching environments

**Durable and Lightweight** — High-impact molded plastic body with single-finger access

**Multimode and Singlemode Modules** — Utilize zirconia ceramic sleeves for optimum performance



**Recessed Base** — Allows cable to be fit under the modules for added cable management space when installed in the horizontal orientation (i.e. within FCP drawer)



**Compatible with Existing Siemon Enclosures** — Fits within RIC, FCP and SWIC Siemon fibre enclosures and VersaPOD® vertical patch panels



**Shuttered LC adapters** — Optional small plastic shutter door that opens upon insertion without touching the connector endface and springs back into the closed position upon removal to ensure protection of empty ports.



PP2-12-(XX)(X)-01(X) . . . . . 12 Fibre P&P Module with 1 MTP port, black module

**Interface**  
 LC = Standard LC  
 SC = SC  
 LS = Shuttered LC

**Configuration**

L = Low Loss  
 Blank = Standard Loss

**Fibre Type**

6 = OM1, 62.5/125 Multimode Beige adapters  
 5L = OM3, XGLO 300 50/125 Multimode Aqua adapters  
 5V = OM4, XGLO 550 50/125 Multimode Aqua adapters  
 EV = OM4, XGLO 550 50/125 Multimode Erika Violet adapters  
 SM = OS1/OS2, Singlemode Blue adapters



PP2-24-L(X)(X)-01(X) . . . . . 24 Fibre LC P&P Module with 2 MTP ports, black module

**Configuration**

L = Low Loss  
 Blank = Standard Loss

**Fibre Type**

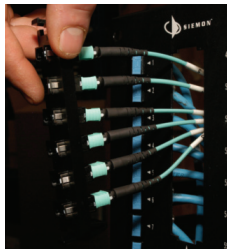
6 = OM1, 62.5/125 Multimode Beige adapters  
 5L = OM3, XGLO 300 50/125 Multimode Aqua adapters  
 5V = OM4, XGLO 550 50/125 Multimode Aqua adapters  
 EV = OM4, XGLO 550 50/125 Multimode Erika Violet adapters  
 SM = OS1/OS2, Singlemode Blue adapters

**Shutter Door Option**

C = Standard LC  
 S = Shuttered LC

## MTP to MTP Adapter Plates

Siemon MTP Adapter Plates offer a user friendly “pass-through” option for MTP connectors. Fitting within Siemon’s fibre enclosures and VersaPOD vertical patch panels, these plates secure MTP connectors, allowing efficient implementation of MTP to MTP reels and extenders as well as MTP to LC Trunks for direct equipment and patching connections.



**High Density**

Supports up to 96 fibres per adapter plate - providing up to 1152 fibres in 4U

**Flexible Configurations**

1, 2, 4, 6 and 8 port versions available, supporting both Singlemode and Multimode

**40 Gb/s and 100 Gb/s Ready**

Enables simple upgrade path to future 40 Gb/s and 100 Gb/s applications over Multimode 50/125 laser optimised fibre

**Popular RIC Adapter Footprint**

Fits within RIC, FCP and SWIC Siemon fibre enclosures and VersaPOD vertical patch panels

# PRODUCT INFORMATION

## Ordering Information:



RIC-F-MP(XX)-01-(X)..... MTP adapter plate

**Fibre Count**

- 12** = 12 (1 MTP adapter)
- 24** = 24 (2 MTP adapters)
- 48** = 48 (4 MTP adapters)
- 72** = 72 (6 MTP adapters)
- 96** = 96 (8 MTP adapters)

**Key Orientation**

- Blank** = Opposed (key up to key down) Black adapters
- Q** = Opposed (key up to key down) Aqua adapters
- E** = Opposed (key up to key down) Erika Violet adapters
- B** = Aligned (key up to key up) Grey adapters

## PERFORMANCE

Fiber Type		MAX Insertion (db)		MAX Return Loss (db)		Performance Class
		MTP	LC, SC	MTP	LC, SC	
6MM	62.5/125	0.50	0.50	20	25	LightSystem™
5L-MM	50/125 10G (OM3)	0.40	0.25	20	30	XGLO™ 300
5V-MM	50/125 10G (OM4)	0.40	0.25	20	30	XGLO™ 550
SM-LWP	SM (OS2)	0.60	0.40	60	55	XGLO™
5V-MM	50/125 10G (OM3)	0.20	0.15	20	30	XGLO 300 Low Loss
5V-MM	50/125 10G (OM4)	0.20	0.15	20	30	XGLO 550 Low Loss

*Because we continuously improve our products, Siemon reserves the right to change specifications and availability without prior notice.*

**Worldwide Headquarters**  
**North America**  
 Watertown, CT USA  
 Phone (1) 860 945 4200

**Regional Headquarters**  
**Europe Russia Africa**  
 Chertsy, Surrey, England  
 Phone (44) 0 1932 571771

**Regional Headquarters**  
**China**  
 Shanghai, P.R. China  
 Phone (86) 215385 0303

**Regional Headquarters**  
**Latin America**  
 Bogota, Colombia  
 Phone (571) 657 1950/51/52

**Regional Headquarters**  
**India Middle East**  
 Dubai, United Arab Emirates  
 Phone (971) 4 3689743

**Regional Headquarters**  
**Asia Pacific**  
 Sydney, Australia  
 Phone (61) 2 8977 7500

**Siemon Interconnect Solutions**  
**Watertown, CT USA**  
 Phone (1) 860 945 4213 US  
[www.siemon.com/SIS](http://www.siemon.com/SIS)

