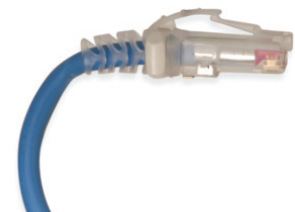
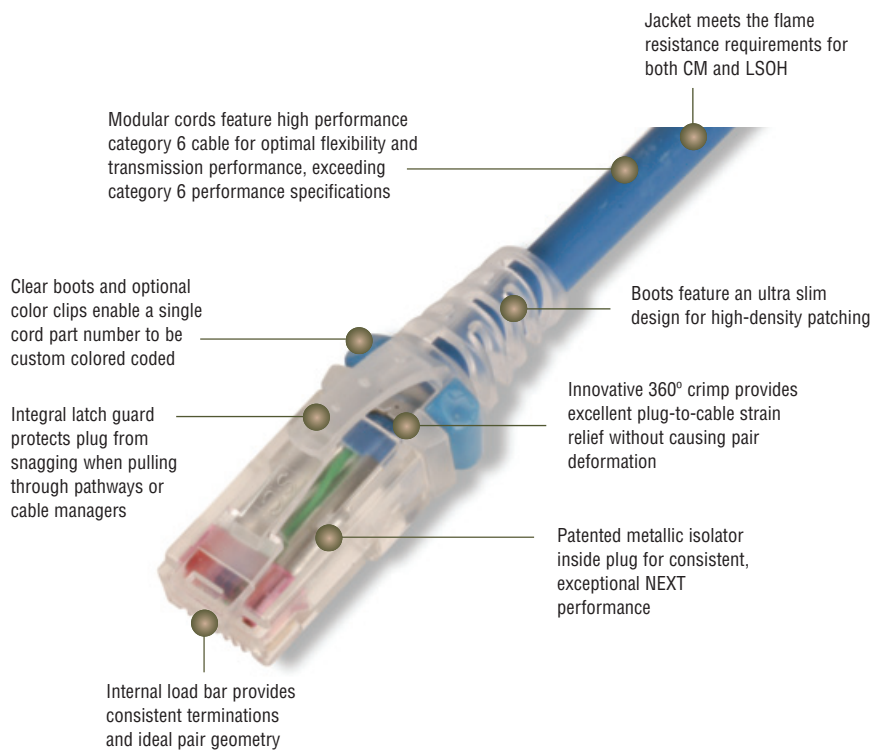


# MC<sup>®</sup> 6 UTP Modular Cords - North America

Siemon's category 6 series of modular cords are key components to ensure optimum channel performance of our category 6 UTP systems. A variety of product enhancements contribute to the cord's superior performance — including 250 MHz rated stranded cordage, a patented crosspair isolator and an innovative 360° crimp, which provides excellent plug-to-cable strain relief without causing pair deformation.

The cable used to manufacture the category 6 patch cords exceeds the specifications set forth by both ANSI/TIA-568-C.2 and ISO/IEC 11801:2002.



**Excellent Bend Relief**  
Boot and integrated strain relief ensures proper bend relief, critical for category 6 performance



**Color Coding**  
Optional colored clips enable field color coding and can easily be snapped into place without having to disconnect cords

- STANDARDS COMPLIANCE**
- ANSI/TIA-568-C.2
  - ISO/IEC 11801
  - IEEE 802.3af (PoE)
  - IEEE 802.3at (PoE+)
  - IEC 60603-7
  - cUL US Listed
  - IEC 60332-1, 60754, 61054, 61034
  - TIA-968-A (formerly FCC Part 68 Subpart F)



# PRODUCT INFORMATION

## Performance Specifications:

ELECTRICAL	
Contact Resistance	20 mΩ
Input to Output DC Resistance	200 mΩ
Min. Dielectric Withstand Voltage (contact to contact)	1000 V DC or AC peak
Insulation Resistance	500 mΩ
Compatibility	Backwards to cat 5e
Current Rating @ 25° C	1.5 A
Power over Ethernet	Suitable for PoE and PoE+
MECHANICAL – GENERAL	
Operating Temperature	-10 to 60 °C, (14 to 140 °F)
Flammability Rating	UL 94 - V0
Green Features	RoHS, lead-free, halogen-free, PVC free
Contact Materials	Copper alloy with contact plating of 50 micro inches gold or equivalent
Plastic Materials	Flame retardant thermoplastic
Marking	P/N, length, performance level, QC
MECHANICAL – PLUG	
Number of Plug Insertion Cycles	750
Min. Plug Retention Force	50N
Plug Compatibility	Compatible with RJ45 outlets

MECHANICAL – CABLE (STRANDED)	
Wire Size Range (nominal)	26 AWG 7x34 Stranded tinned copper
Cable Construction	UTP
Cable O.D. (nominal)	5.3mm (0.20 in.)
Wiring	T568A/B
Jacket Type	CM/LSOH
Bend Radius	25mm (1.0 in.)

## MC 6 UTP Modular Cords

Category 6 MC, double-ended, 4-pair UTP stranded modular patch cord, T568A/B, clear boot.

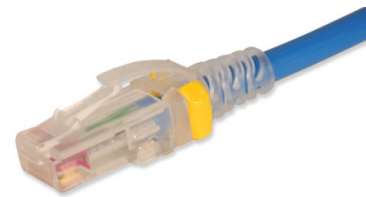
MC6-(XX)-(XX)

<b>Cord Length:</b>	<b>Cord Color:</b>
03 = 0.9m (3 ft.)	01 = Black    04 = Gray    07 = Green
05 = 1.5m (5 ft.)	02 = White    05 = Yellow    08 = Violet
07 = 2.1m (7 ft.)	03 = Red      06 = Blue      09 = Orange
10 = 3.1m (10 ft.)	
15 = 4.6m (15 ft.)	
20 = 6.1m (20 ft.)	

CLIP-(XX) ..... Color coding clip, bag of 25

<b>Clip Color</b>	
01 = Black    04 = Gray    07 = Green	
02 = White    05 = Yellow    08 = Violet	
03 = Red      06 = Blue      09 = Orange	

ⓑ Add "B" for bulk pack of 100 modular cords.



Because we continuously improve our products, Siemon reserves the right to change specifications and availability without prior notice.

**For additional resource information:**

Visit our web site at [www.siemon.com](http://www.siemon.com)

**North America**  
Watertown, CT USA  
Phone (1) 860 945 4200 US  
Phone (1) 888 425 6165 Canada

**Europe/Middle East/Africa**  
Surrey, England  
Phone (44) 0 1932 571771

**Asia/Pacific**  
Shanghai, P.R. China  
Phone (86) 21 5385 0303

**Latin America**  
Bogota, Colombia  
Phone (571) 657 1950