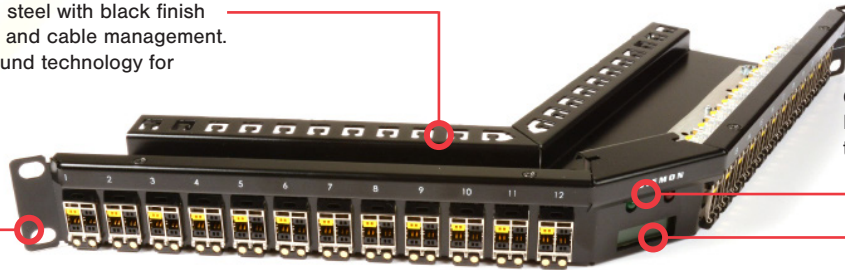


MapIT® G2 Category 7A TERA® System

The MapIT G2 TERA system combines two best-in-class systems in one. The MapIT G2 Automated Infrastructure Management (AIM) system is available in a fully shielded TERA solution. TERA, already the highest performing and most secure twisted pair cabling system, now features MapIT G2 technology built into the Category 7A / ClassF_A patch panels and cords. This combination of intelligent TERA hardware and Siemon EagleEye® Connect software delivers real-time tracking and management of network-wide physical layer activity and IT assets. This benchmark AIM solution offers users a truly unparalleled level of performance, security and control.

Robust

Lightweight, high strength steel with black finish integrates outlet retention and cable management. Panel includes Quick-Ground technology for shielded systems



Green

MapIT G2 uses 78% less power than competing systems

Installation Friendly

Individual outlets snap into panel from the front or rear. Angled panel design allows patch cords to be routed directly to vertical cable managers

Smart

Panel intelligence tracks patch cord connections and drives LCD/LEDs for technician guidance

Compact

Off-set pogo pin position optimised for high density stacked applications



Fully Shielded

S/FTP construction provides 1000 MHz bandwidth per pair

Mapping

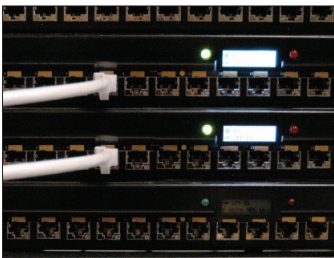
Sensor pin is accessible at the rear of the boot for test and mapping purposes

Quality

Plug contacts and sensor pins feature 50 microns of gold plating for long-term reliability and resistance to corrosion

Flexible

A variety of TERA 4-pair and 2-pair to RJ45 patch cords allow easy connection to any RJ45 equipped active electronics



Trace and display patch cord connections on the patch panel LCD



A complete circuit trace can be viewed on-screen at the MCP or DCP



TERA supports cable sharing allowing multiple 2-pair applications to run over one 4-pair cable and outlet, saving significant material and pathway space

Product Information

FEATURES AND BENEFITS

Item	Feature	Benefit
Smart Features	Backlit graphic LCD and green/red LEDs for patch cord traces, diagnostics and technician guidance	Improves technician efficiency, allows multiple techs to work in the same patch zone without confusion
Resilient	Redundant power and communications to patch panels	Increases system reliability
Physical Layer Monitor	Monitors patch cord connections	Identify unauthorized disconnections, protects critical applications, ensures accurate documentation
Panel Intelligence	Port monitoring capability is built into each patch panel	Increases density and reduces cost
Heat	Panels run cold and do not impede cooling airflow in cabinets	Helps maximize cooling efficiency in data center environments
Connections	Control Cable connections can be made using Cat 5e solid shielded cable	Readily available, low cost, field configurable
Self Diagnostics	If a panel is disconnected from the system, the MCP will report it to the EagleEye™ software, which can trigger an alert to an IT manager or technician to fix the problem	Makes maintenance of the MapIT® G2 system simple, reduces downtime
Scalable	Remote offices can use as few as two panels. For data centers, thousands of panels may be used to monitor very large patch zones	Cost effective solution for monitoring small remote offices, large data centers or office/campus environments
Installation	Easy to understand and configure. No need to manually map or test each port	Reduces the time required to configure and install the system
Reliable	Tested to MTBF of 20 years	Ensures product reliability and life
Cable Sharing	TERA® supports cable sharing allowing multiple 2-pair applications to run over one 4-pair cable	Saves cable cost and pathway space
Secure	TERA passes government TEMPEST test requirements. Also, unauthorized connects or disconnects are monitored in real time	MapIT G2 TERA is the most secure and reliable copper twisted-pair cabling system available

Product Information

PHYSICAL PROPERTIES

Dimensions and Weight	Height	44.45mm (1.75 in.)
	Width	482.6mm (19 in.)
	Depth	225 mm (8.86 in.) overall (97mm from mounting ears)
	Weight	1.04kg (2.29 lbs)
Outlet Compatibility	Panel type	Modular, Angled
	Number of Ports	24 4-pair or 48 2-pair
	Compatible Outlets	TERA® (sold with panel)
LCD Display	Size	128 x 32 pixels
	Type	Graphic
	Backlight	White LED
	Timeout	User programmable 3 to 30 seconds
Control Cable Connections	Connection Type	RJ45
	Ports	1 IN, 1 OUT
	Protocol	RS485
	Control Cable Type	Category 5e solid, shielded
Environmental	Operating Temperature	0° to 45° C (32° to 113° F)
	Operating Humidity	Up to 90%, non-condensing
	Storage Temperature	-40° to 70° C (40° to 158° F)
	Storage Humidity	Up to 90%, non-condensing
EMC	FCC Part 15 (47 CFR 15) Class A, ICES-003 Class A, EN550022/CISPR 22 Class A, AS/NZS 3548 Class A, CCC	
EMC Immunity	EN/IEC 61000 - 4-2	
	EN/IEC 61000 - 4-3	
	EN/IEC 61000 - 4-4	
	EN/IEC 61000 - 4-5	
	EN/IEC 61000 - 4-6	
	EN/IEC 61000 - 4-11	
Safety	UL 60950-1-2nd Ed - Information Technology Equipment - Safety Part 1: General Requirements ACA TS 001, AS/NZS 3260	

Ordering Information

MapIT® G2 TERA® Patch Panel

Part Number	Description
M-SPPA-T24K.....	MapIT G2 TERA panel, 24 ports, angled, black, 1U, includes TERA outlets
M-SPPA-T24-01K.....	MapIT G2 Ready TERA panel, 24 ports, angled, black, 1U, includes TERA outlets

Ready Panel Upgrade to MapIT G2



Part Number	Description
M-SPPAT-PCBA-24.....	MapIT G2 TERA panel upgrade kit, PCB

MapIT G2 TERA Patch Cords - 4 Pair

M-T4-(XX)M-B(XX)L TERA-TERA cable assembly, ivory jacket, coloured boot, LSOH

Cord Length	Boot Colour
01 = 1m (3.3 ft.)	01 = Black
02 = 2m (6.6 ft.)	02 = White
03 = 2m (9.8 ft.)	03 = Red
04 = 5m (16.4 ft.)	04 = Grey
	06 = Blue

Optional Accessories

Category 5e Shielded Cable for Bus (Control Cable) Connections

Part Number	Description
9A5R4-E1-(XX)-R1A	Riser, 305m (1000 ft.) reel (US)
9A5R4-E2	Riser, blue, 305m (1000 ft.) Reel-in-box

Modular Plug for Bus Connections

Part Number	Description
PS-8-8	8-Position shielded modular plug with 8 contacts

Ready Panel Upgrade to MapIT G2

Part Number	Description
M-SPPAT-PCBA-24.....	MapIT G2 TERA panel upgrade kit, PCB

Because we continuously improve our products, Siemon reserves the right to change specifications and availability without prior notice.

North America	Asia Pacific	Latin America	Europe	China	India Middle East
P: (1) 860 945 4200	P: (61) 2 8977 7500	P: (571) 657 1950/51/52	P: (44) 0 1932 571771	P: (86) 215385 0303	P: (971) 4 3689743

Siemon Interconnect Solutions
P: (1) 860 945 4213
www.siemon.com/SIS

MapIT G2 TERA Patch Cords - 2 Pair



M-T2E2-(XX)M-B(XX)L TERA to Category 5e screened RJ45 cable assembly, ivory jacket, coloured boot, LSOH

Cord Length	Boot Colour
01 = 1m (3.3 ft.)	01 = Black
02 = 2m (6.6 ft.)	02 = White
03 = 2m (9.8 ft.)	03 = Red
04 = 5m (16.4 ft.)	04 = Grey
	06 = Blue

MapIT G2 TERA - to - Modular Patch Cords - 4 Pair



M-T4(X)-S(XX)M-B(XX)L ... TERA - RJ45 cable assembly Category 6A, ivory jacket, coloured boot, LSOH

Cord Length	Boot Colour
01 = 1m (3.3 ft.)	01 = Black
02 = 2m (6.6 ft.)	02 = White
03 = 2m (9.8 ft.)	03 = Red
04 = 5m (16.4 ft.)	04 = Grey
	06 = Blue

Wiring
A = T568B
T = T568A

MapIT G2 TERA Interconnect Adapter Cords

Part Number	Description
TVLA2Z-V1J7001F	4-pair TERA outlet to RJ45 plug adapter cord, .304m (1ft)
TVLA2ZCV1J7001F	2-pair TERA outlet to RJ45 plug adapter cord, .304m (1ft)