

LockIT™ Patch Cords

LockIT™ Patch Cords prevent unintended or unauthorized disconnection of the plug from an outlet. These tamper proof patch cords are available in category 6 and 6A unshielded, and category 6A shielded performance levels. All versions are offered in both 26 & 28 AWG constructions. Each of the cords requires the LockIT cord key for removal, but may be freely inserted into an outlet to secure the connection without needing the key. All LockIT cords have transparent low-profile boots with a red locking feature to easily identify secured connectivity.

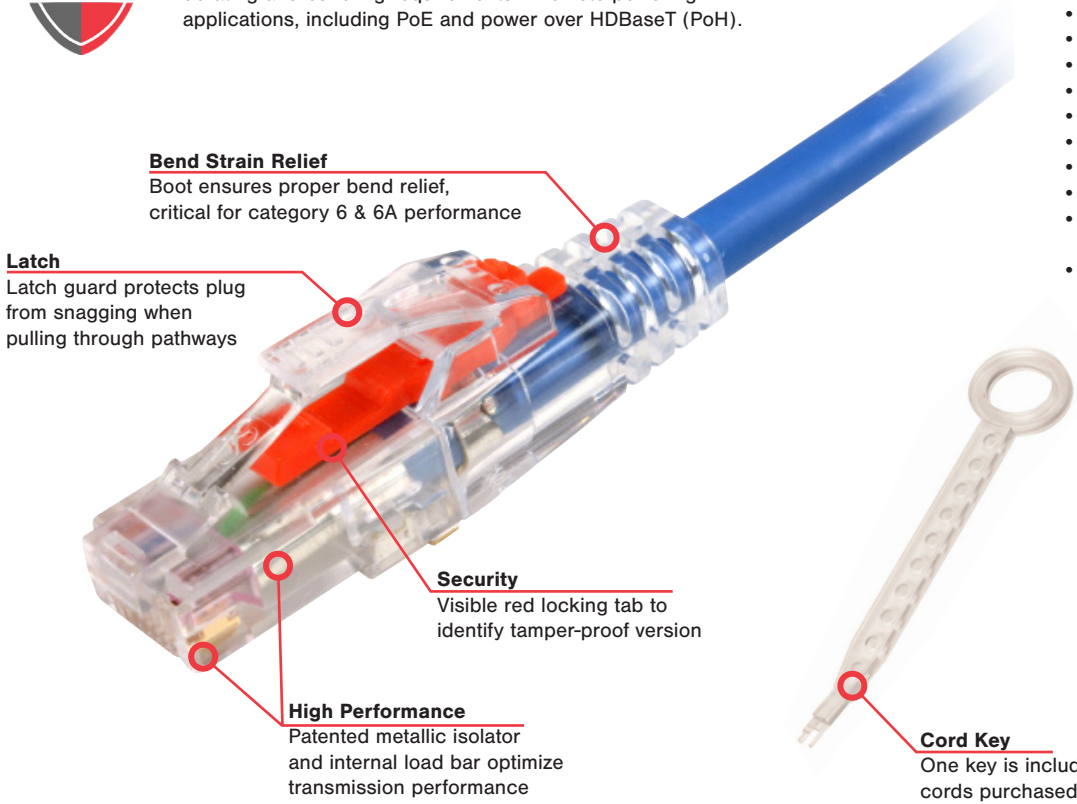
LockIT cords are compatible with any standards compliant RJ45 outlet providing compatibility in a variety of applications and the perfect choice for use in public areas such as schools, retail stores, transportation, hospitality and waiting areas. These innovative cords are an ideal solution to protect mission-critical networks such as data centers, health care environments and government systems. The LockIT Patch Cord is fully supported by applicable Siemon System Warranties.



Siemon's **PowerGuard** technology with a 75°C operating temperature improves heat dissipation for reduced length derating and bundling requirements in remote powering applications, including PoE and power over HDBaseT (PoH).

STANDARDS COMPLIANCE

- ANSI/TIA-568.2-D
- ISO/IEC 11801-1 Ed 1.0
- IEEE 802.3af (Type 1 PoE)
- IEEE 802.3at (Type 2 PoE)
- IEEE 802.3bt (Type 3 PoE)
- IEEE 802.3bt (Type 4 PoE)
- Power over HDBaseT (PoH)
- IEC 60603-7
- CM: UL US Listed
- IEC 60332-1, 60754, 61054, 61034
- TIA-968-A (formerly FCC Part 68 Subpart F)
- IEC 60332-3 (Category 6A UTP and S/FTP, 26 awg only)



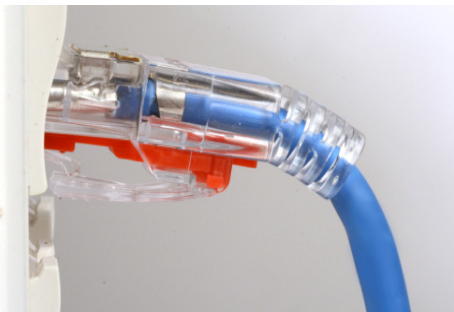
Bend Strain Relief
Boot ensures proper bend relief, critical for category 6 & 6A performance

Latch
Latch guard protects plug from snagging when pulling through pathways

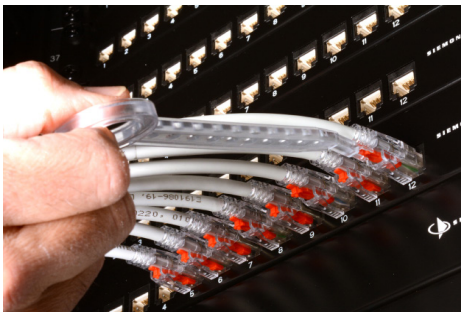
Security
Visible red locking tab to identify tamper-proof version

High Performance
Patented metallic isolator and internal load bar optimize transmission performance

Cord Key
One key is included with every 10 cords purchased.



Bend Relief
Bend relief provided by ribbed boot design.



Easy Unlock Access
Extended key length allows for easier access to unlock cords in high density environments.



Simple Install
No key required to lock cords in place, simply press red tab in to secure.

Product Information

Applications

The LockIT™ system is a cost-effective way to control physical access to the network. It is easily implemented and highly manageable, making it suitable for a wide range of applications and vertical markets. LockIT is ideal for securing connections in public areas and shared spaces. It also reduces the risk of severing critical connections in data centers, financial services, health care, and other mission critical networks.



Security Cameras

Prevent unauthorized tampering or disconnection at security/ surveillance cameras.



Transportation and Point of Sale Terminals

Prevent tampering or accidental disconnection at public ticketing terminals and self-service kiosk connections.

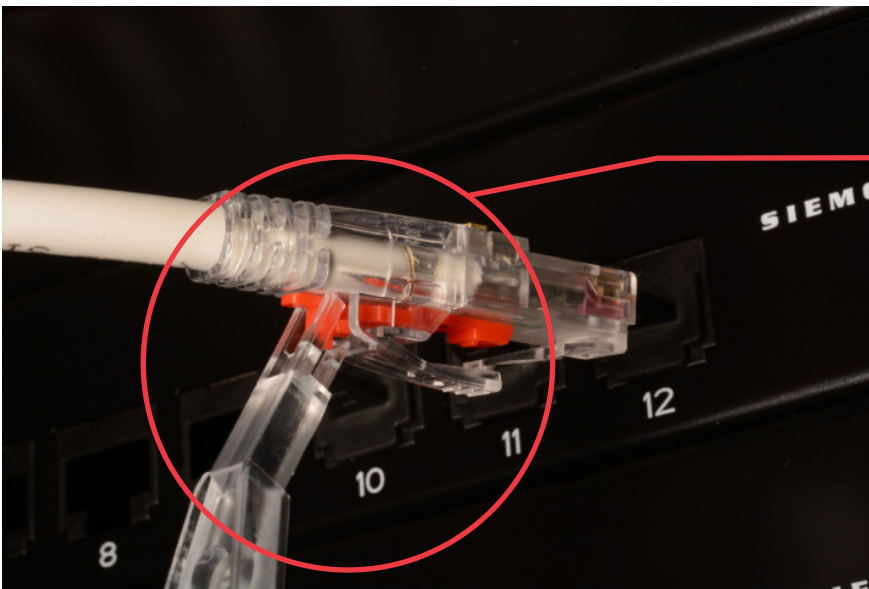


Entertainment and Hospitality

Prevent unauthorized disconnects and deter patch cord theft in public area and guest room outlets connected to digital displays.

LockIT™ Patch Cord Key

The LockIT™ Key is used to unlock all LockIT patch cords. The extended length provides the ability to easily unlock the plug in high density applications. The key is included with the system and is also available for purchase separately. One key is included with every 10 cords purchased and is also available for purchase separately.



Performance Specifications

Mechanical - Cord Cable (7x32 Stranded)

	Cord Type	26AWG	28AWG
Cable OD (Nominal)	Category 6 UTP	5.3mm (0.20 in)	4.0mm (0.16 in)
	Category 6A UTP	6.3mm (0.25 in)	5.3mm (0.21 in)
	Category 6A Shielded	6.4mm (0.25 in)	5.5mm (0.22 in)
Bend Radius	Category 6 UTP	21mm (0.8 in)	16mm (0.63 in)
	Category 6A UTP	25mm (1.0 in)	21mm (0.84 in)
	Category 6A Shielded	38.4mm (1.5 in)	33mm (1.32 in)
Cord Series	LockIT to LockIT	LKP1-, LKP3-, LKP5-	LKP2-, LKP4-, LKP6-
	LockIT to RJ45	LKM1-, LKM3-, LKM5-	LKM2-, LKM4-, LKM6-
Wiring		T568A/B	T568A/B
Jacket Type		CM/LS0H	CM/LS0H

Electrical

Contact Resistance	20mΩ
Input to Output Resistance	200mΩ
Min. Dielectric Withstand Voltage	1000 VAC Contact to Contact
Insulation Resistance	500MΩ
Compatibility	Category 6A, 6 and 5e
Current Rating @ 25°C	1.5A
Power Over Ethernet	PoE (Type 1,2,3,4) PoH

Mechanical - Plug

Number of Plug Insertion Cycles	2500
Min. Plug Retention Force	50N (11.2 lbf)
Plug Compatibility	Compatible with RJ45 Outlets
Cable to Plug Tensile Strength (min)	20lbs.

Mechanical

Operating Temperature	-20 to 75°C (-4 to 167°F)
Flammability Rating	UL 94 V-0
Green Features	RoHS, Lead-Free, Halogen-Free, PVC Free
Plug Housing Materials	Polycarbonate
Contact Materials	50 Microinches Gold Plating or Equivalent
Plastic Materials	Flame Retardant Thermoplastic
Marking	Part Number, Length, Performance Level



LKM Series: LockIT to Standard Plug Cord

Product Information

LockIT to LockIT

Gauge	Part Number	Description
26 AWG	LKP1-(XXX)F-(XX)DS	Category 6 UTP, Double-ended Locking Patch Cord, RJ45, Stranded 26 AWG, CM/LS0H, T568A/B
	LKP3-(XXX)F-(XX)DS	Category 6A UTP, Double-ended Locking Patch Cord, RJ45, Stranded 26 AWG, CM/LS0H, T568A/B
	LKP5-(XXX)F-(XX)DS	Category 6A S/FTP, Double-ended Locking Patch Cord, RJ45, Stranded 26 AWG, CM/LS0H, T568A/B
28 AWG	LKP2-(XXX)F-(XX)DS	Category 6 UTP, Double-ended Locking Patch Cord, RJ45, Stranded 28 AWG, CM/LS0H, T568A/B
	LKP4-(XXX)F-(XX)DS	Category 6A UTP, Double-ended Locking Patch Cord, RJ45, Stranded 28 AWG, CM/LS0H, T568A/B
	LKP6-(XXX)F-(XX)DS	Category 6A S/FTP, Double-ended Locking Patch Cord, RJ45, Stranded 28 AWG, CM/LS0H, T568A/B

LockIT to RJ45

Gauge	Part Number	Description
26 AWG	LKM1-(XXX)F-(XX)DS	Category 6 UTP, Locking-to-Standard RJ45 Patch Cord, Stranded 26 AWG, CM/LS0H, T568A/B
	LKM3-(XXX)F-(XX)DS	Category 6A UTP, Locking-to-Standard RJ45 Patch Cord, Stranded 26 AWG, CM/LS0H, T568A/B
	LKM5-(XXX)F-(XX)DS	Category 6A S/FTP, Locking-to-Standard RJ45 Patch Cord, Stranded 26 AWG, CM/LS0H, T568A/B
28 AWG	LKM2-(XXX)F-(XX)DS	Category 6 UTP, Locking-to-Standard RJ45 Patch Cord, Stranded 28 AWG, CM/LS0H, T568A/B
	LKM4-(XXX)F-(XX)DS	Category 6A UTP, Locking-to-Standard RJ45 Patch Cord, Stranded 28 AWG, CM/LS0H, T568A/B
	LKM6-(XXX)F-(XX)DS	Category 6A S/FTP, Locking-to-Standard RJ45 Patch Cord, Stranded 28 AWG, CM/LS0H, T568A/B

LockIT Patch Cord Key

Part Number	Description
LK-KEY-CLR	LockIT Patch Cord Key

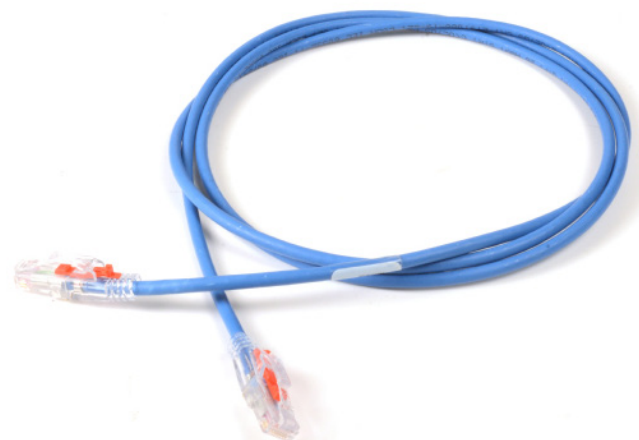
(XXX) to specify cord length:

003 = 3 ft., 005 = 5 ft., 007 = 7 ft., 010 = 10 ft., 015 = 15 ft., 020 = 20 ft.

(XX) to specify jacket color:

01 = black, 02 = white, 03 = red, 04 = gray, 05 = yellow, 06 = blue, 07=green

Note: 08 = violet and 09 = orange are available with longer lead time and MOQ



LKP Series: LockIT to LockIT cord

Because we continuously improve our products, Siemon reserves the right to change specifications and availability without prior notice.

North America P: (1) 860 945 4200	Asia Pacific P: (61) 2 8977 7500	Latin America P: (571) 657 1950/51/52	Europe P: (44) 0 1932 571771	China P: (86) 215385 0303	India, Middle East & Africa P: (971) 4 3689743
---------------------------------------------	--------------------------------------------	-------------------------------------------------	----------------------------------------	-------------------------------------	--------------------------------------------------------------

Siemon Interconnect Solutions
P: (1) 860 945 4213
www.siemon.com/SIS

WWW.SIEMON.COM



08/20

SS_LockITPatch Cords_RevA