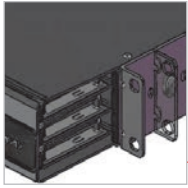


LightStack™ Ultra High Density Fiber Enclosure

As today's high density Data Centers migrate from 10 to 40 and 100 gigabit speeds, they require low loss fiber connectivity to support multiple mated connections for flexible patching options over a wide range of distances and configurations while remaining within link loss budgets. At the same time, these connections need to be easily accessed and managed to quickly and effectively make changes.

With superior best-in-class features, Siemon's LightStack ultra high density fiber Plug and Play system offers superior density, port access and cable management in a sleek, modern enclosure that easily supports today's advanced Data Center and storage area network environments, while providing fast, seamless migration to advanced 40 and 100 gigabit applications.



Mounting options

Rack mounting brackets can be attached at any of 3 horizontal positions



Visually appealing magnetic door

- Easy to open and close
- Eliminates potential pinch points



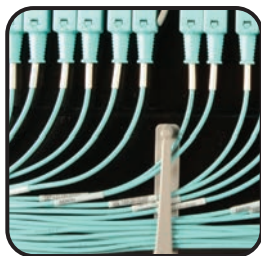
Innovative labeling solution and port ID

Drop-down label strip holder for high visibility



Module Insertion and Removal

Can be quickly and easily installed or removed from the front or rear of the enclosure



ULTRA HIGH DENSITY

144 fibers per 1U (LC interface) and 864 fibers per 1U (MTP interface)

576 fibers per 4U (LC interface) and 3456 fibers per 4U (MTP interface)



CABLE MANAGEMENT CLIPS

Unlatch and swing open for full access to any jumper



HIGH CAPACITY DESIGN

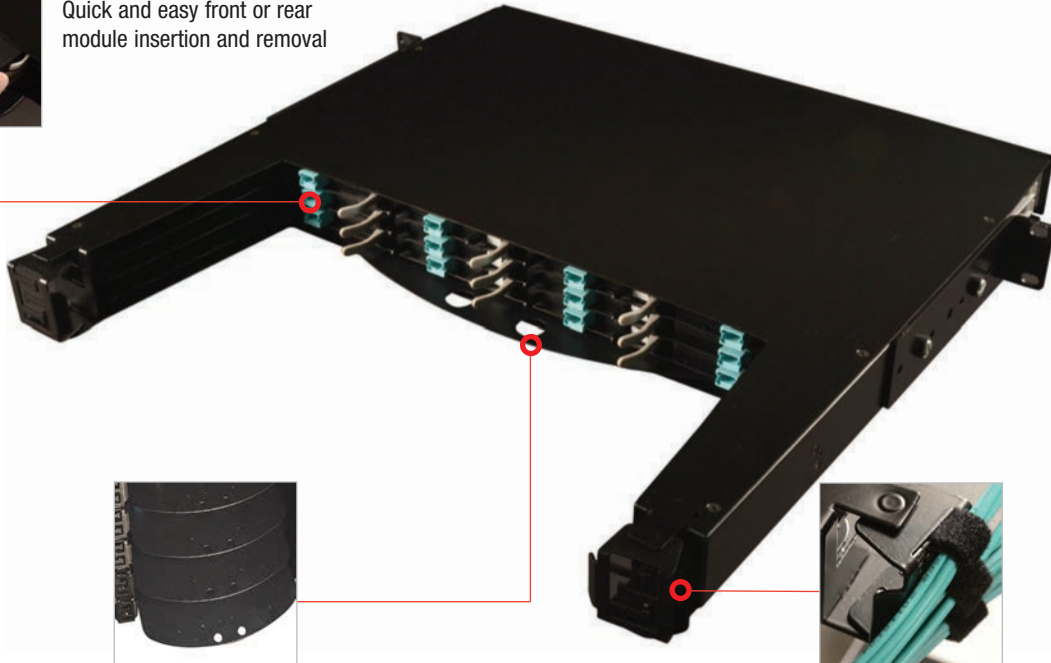
Handles both traditional 2mm zipcord and 2 fiber, interconnect tight-buffered jumper types

LightStack™ Ultra High Density Fiber Enclosure

LightStack 1U Rear View



Module Insertion
Quick and easy front or rear module insertion and removal



Cable Divider
Acts as a rear cable divider between stacked enclosures (in the out position). Pushes inward to provide complete access to connectivity at the rear of stacked enclosures



Swivel Trunk Tie Down Points
Protect cable from bend radius violations and eliminates pinch points

LightStack 4U Front View



LightStack 4U Rear View



LIGHTSTACK ENCLOSURE ORDERING INFORMATION

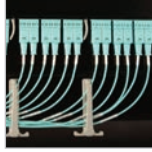
| Part # | Description |
|----------|--|
| LS-1U-01 | 1U Enclosure, 144 LC fibers or 864 MTP fibers, mounts in 19 in. racks or cabinets |
| LS-4U-01 | 4U Enclosure, 576 LC fibers or 3456 MTP fibers, mounts in 19 in. racks or cabinets |

LIGHTSTACK ENCLOSURE DIMENSIONS

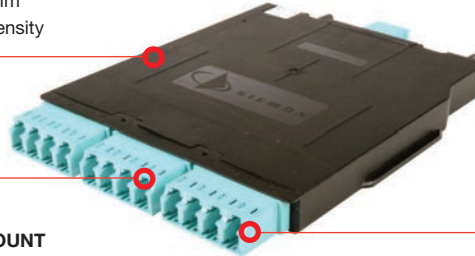
| | 1U | 4U |
|-------------------|--|--|
| Height | 43.9 mm (1.73 in.) | 176.8 mm (6.96 in.) |
| Width | 482.3 mm (18.99 in.) | 482.3 mm (18.99 in.) |
| Depth | 530.6 mm (20.89 in.) | 530.6 mm (20.89 in.) |
| Weight | 9.53 kg (21 lb.) | 23.58 kg (52 lb.) |
| Color | Black (RAL 9005) | Black (RAL 9005) |
| Label size | 204.5mm (8.05 in.) L x 23.5mm (.925 in.) W | 204.5mm (8.05 in.) L x 93mm (3.66 in.) W |

LightStack™ Modules

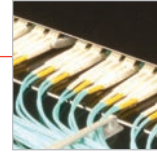
ULTRA SLIM DESIGN
LightStack modules have an ultra slim design to achieve maximum fiber density



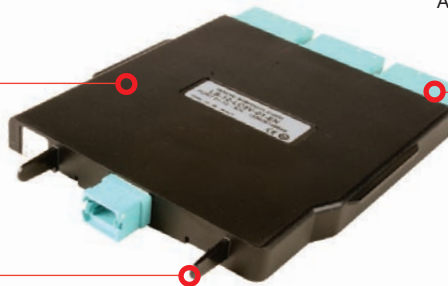
HIGH FIBER COUNT
Up to 12 fiber count per module



INTERFACE
LC to MTP interface.
Available in OM4 and SM



LOW LOSS
Low loss performance
(0.35dB per multimode module)



ADAPTERS
Aqua LC and MTP adapters for OM4; Blue LC adapters and black MTP adapters for SM



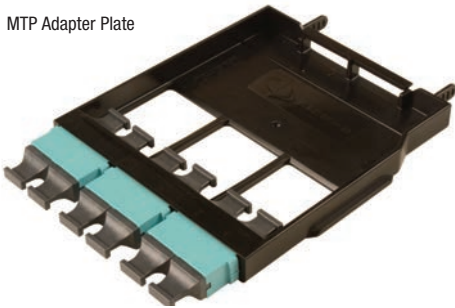
REAR MODULE HANDLES
Handles in the rear of module help facilitate removal from the back of the enclosure

LIGHTSTACK MODULES ORDERING INFORMATION

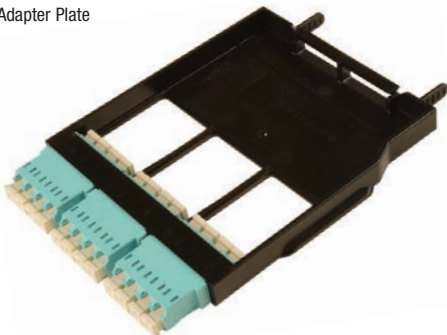
| Part # | Description |
|---------------|---|
| LS-12-LC5V-01 | Module, 12 LC-to-MTP fibers, OM4, XGL0 550, Aqua LC and MTP adapters |
| LS-12-LCSM-01 | Module, 12 LC-to-MTP fibers, Singlemode, Blue LC adapters, Black MTP adapters |

LightStack™ Adapter Plates

MTP Adapter Plate



LC Adapter Plate



LIGHTSTACK MTP ADAPTER PLATES

- Ultra slim design to achieve maximum fiber density
- Up to 72 fiber count
- Handles in the rear of module helps facilitate removal from the back of the enclosure

MTP ADAPTER PLATE ORDERING INFORMATION

| MTP Port Count | LS-MP(X)-01(X)(XX) | Adapter Color |
|-----------------|---|---------------------|
| 2 = 2 MTP Ports | <p>Key Orientation</p> <p>B = Aligned (key up to key up)</p> <p>C = Opposed (key up to key down)</p> | AQ = Aqua ** |
| 4 = 4 MTP Ports | | BK = Black** |
| 6 = 6 MTP Ports | | GR = Gray* |

* Key Orientation (B only)
** Key Orientation (C only)

LIGHTSTACK LC ADAPTER PLATES

- Used in conjunction with LC BladePatch® RazorCore™ trunks (for rear connections) only (see page 7.)
- Available in beige and aqua (MM) and blue (SM)
- 12 LC fibers

LC ADAPTER PLATE ORDERING INFORMATION

| LS-LC12-01C-(XX) | Adapter Color |
|------------------|-----------------------------|
| | AQ = Aqua Multimode |
| | BG = Biege Multimode |
| | BL = Blue Singlemode |

Trunking Options

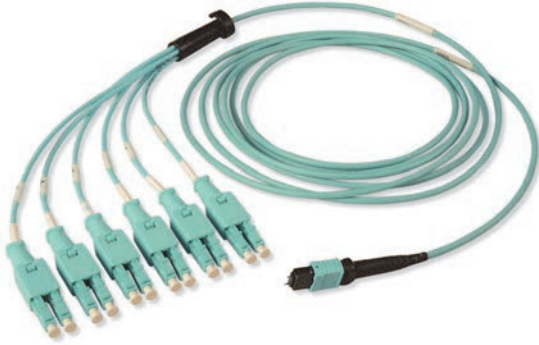
NEXT GENERATION MTP TRUNKS

Siemon's Next Generation MTP to MTP trunks are redesigned to achieve 100lb pull strength to handle more aggressive pathway environments. They come with a foamed zipper pulling eye for quick removal saving on installation time and are reusable if relocation of a trunk is required after the initial installation. *They are available in 12/24 fiber counts and Low Loss options only.*

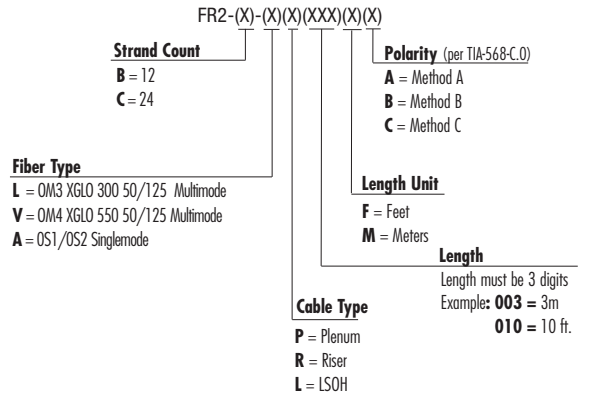


NEXT GENERATION TRUNKS

- OM3/OM4 Bend Insensitive Fiber (BIF)
- SM Non-Bend Insensitive Fiber
- 12 and 24 Fiber strand counts
- Polarity methods A, B and C options
- Low Loss performance (0.20 dB Multimode and 0.6 dB Singlemode MTP)
- Integrated breakout and zipper pulling eye work together to achieve 100 lb. tensile pull strength
- Zipper pulling eye allows for quicker installs
- Allows pulling eyes to be reused when relocating trunks during MAC work



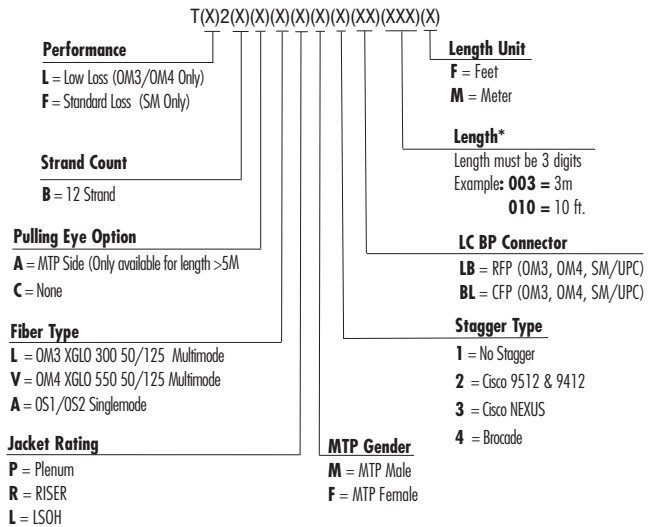
NEXT GENERATION MTP TO MTP TRUNK ORDERING INFORMATION



LC BLADEPATCH® TO MTP HYBRID TRUNKS

- LC BladePatch with push pull latch further improves accessibility
- Designed to facilitate an interconnect or cross connect point between active equipment
- OM3/OM4 Bend Insensitive Fiber (BIF)
- SM Non-Bend Insensitive
- 12 Fiber strand count
- Specific staggered lengths to active equipment
 - Nexus, Cisco MDS, Brocade and No stagger
- Low Loss performance 0.15 dB for LC and 0.20 dB for Multimode MTP
- Standard Loss performance 0.25 dB for LC and 0.60 dB for Singlemode MTP
- Integrated cable manager on breakout

LC BLADEPATCH TO MTP HYBRID TRUNKS ORDERING INFORMATION



Trunking Options

Ordering Information: Non-Armored

F(X)(XX)-(XX)(X)(XXX)(X)-(X)Fiber Plug & Play Cable Reel Assembly, 12 Fiber MTP Female Connectors

Performance

- R = Standard Loss
- L = Low Loss (OM3/OM4 only)
- *E = Standard Loss Extender
- *B = Low Loss Extender (OM3/OM4 only)

Fiber Count

- 12 = 12
- 24 = 24
- 36 = 36
- 48 = 48
- 72 = 72
- 96 = 96
- 144 = 144

Fiber Type

- 6 = OM1 62.5/125 Multimode
- 5L = OM3 XGLO 300 50/125 Multimode
- 5V = OM4 XGLO 550 50/125 Multimode
- SM = OS1/OS2 Singlemode

Polarity (per TIA-568-C.0)

- A = Method A
- B = Method B
- C = Method C
- Blank = Fiber Extender (FE and FB)

Length Unit

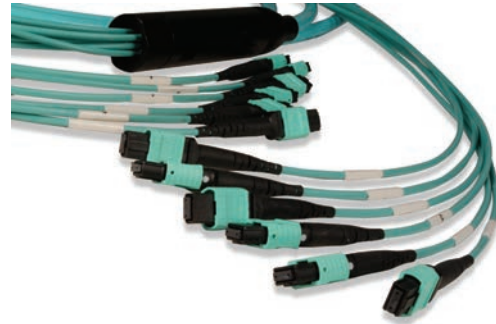
- F = Feet
- M = Meters

Length**

Length must be 3 digits
Example: 003 = 3m
010 = 10 ft.

Jacket Rating

- R = Riser
- P = Plenum
- L = LSOH



MTP TRUNKS

- Provides the backbone link to the system
- OM3/OM4 and SM Fiber type
- 12, 24, 36, 48, 72, 96 and 144 Fiber strand counts
- Riser, plenum and LSOH Jacket ratings
- Polarity methods A, B and C
- Standard loss performance 0.35 dB Multimode and 0.60 dB Singlemode
- Low loss performance 0.20 dB Multimode

Ordering Information: Armored

F(X)(XX)-(XX)(XX)(XXX)(X)(X)Armored Fiber Plug & Play Cable Reel Assembly, 12 Fiber MTP Female Connectors

Performance

- R = Standard Loss
- L = Low Loss (OM3/OM4 only)

Fiber Count

- 12 = 12
- 24 = 24
- 36 = 36
- 48 = 48
- 72 = 72
- 96 = 96
- 144 = 144

Fiber Type

- 6 = OM1 62.5/125 Multimode
- 5L = OM3 XGLO 300 50/125 Multimode
- 5V = OM4 XGLO 550 50/125 Multimode
- SM = OS1/OS2 Singlemode

Polarity (per TIA-568-C.0)

- A = Method A
- B = Method B
- C = Method C

Length Unit

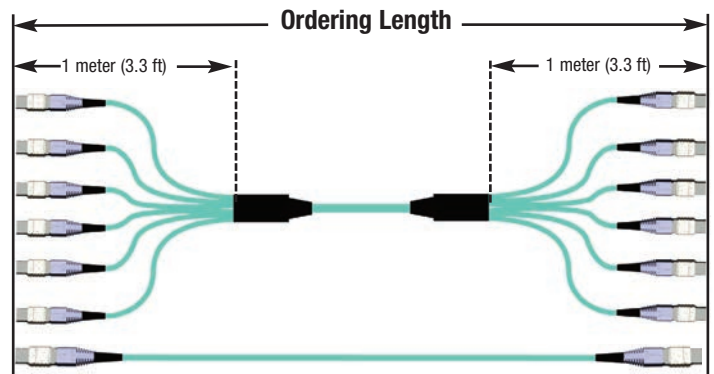
- F = Feet
- M = Meters

Length**

Length must be 3 digits
Example: 003 = 3m
010 = 10 ft.

Jacket Rating

- AR = Armored Riser
- AP = Armored Plenum



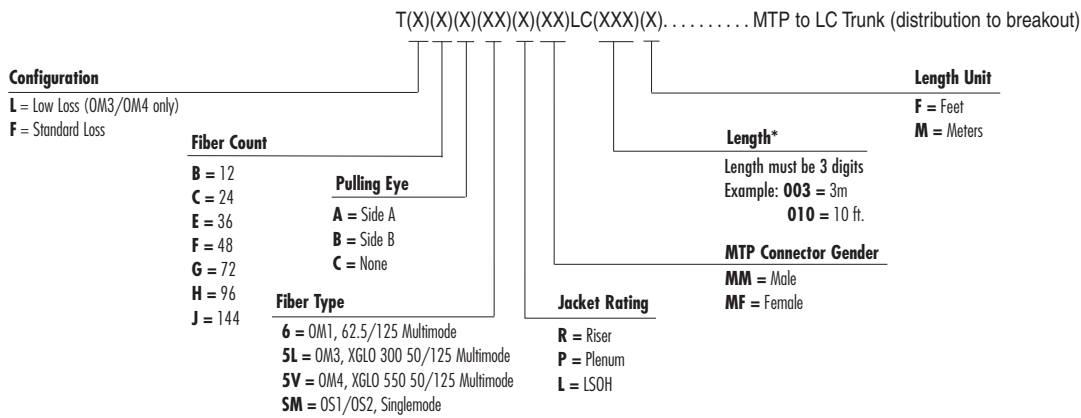
Trunking Options

MTP® TO LC HYBRID TRUNK

Utilizing high quality Siemon RazorCore cable, MTP to LC Trunks offer a connectivity transition from 12-fiber MTP connectors to duplex LC connectors. These may be implemented with Siemon's MTP Adapter Plates to provide flexible direct MTP to LC patching options over a wide a range of distances and infrastructure configurations.

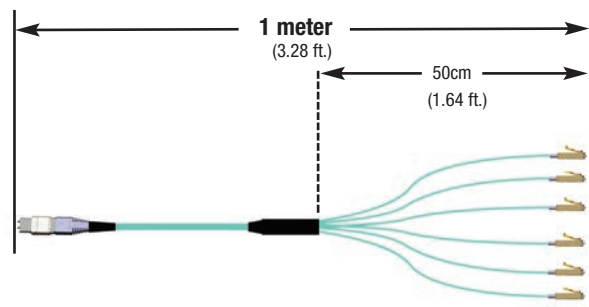
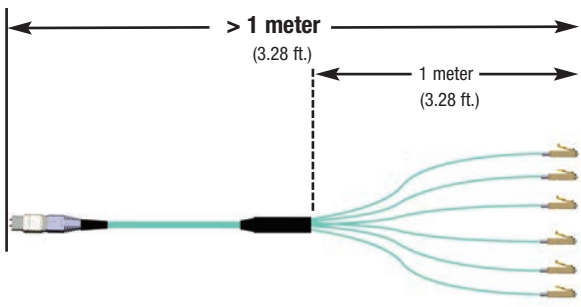


Ordering Information:



See performance details on page 8.

* Minimum order length is 1 meter (3.28 ft.)
Order length is measured connector tip to connector tip.
Trunks greater than 1 meter (3.28 ft.) have breakout length of 1 meter (3.28 ft.)
1 meter (3.28 ft.) trunks have a 50cm (1.64 ft.) breakout length
(See diagram below)

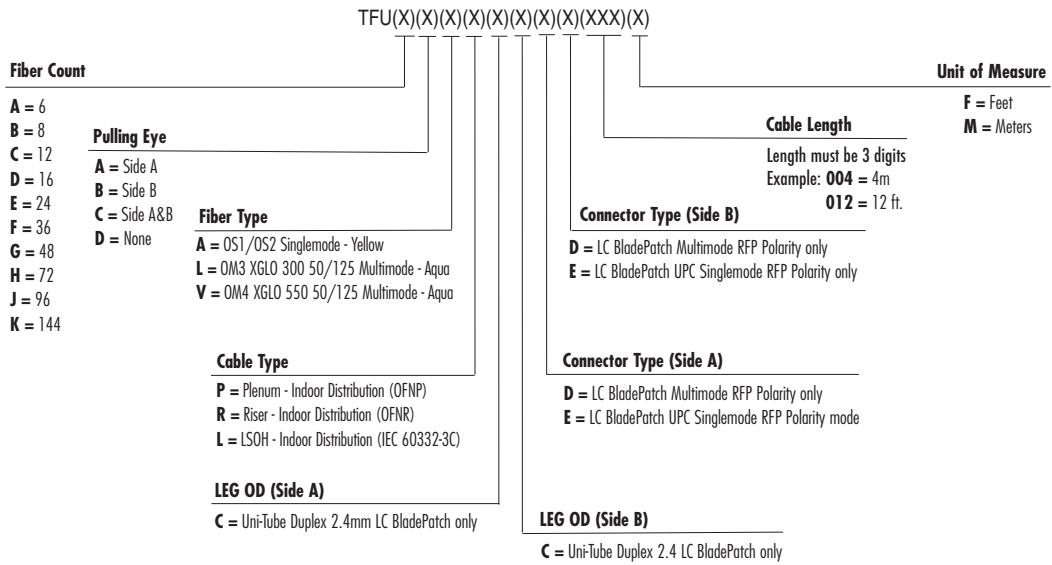


Trunking Options

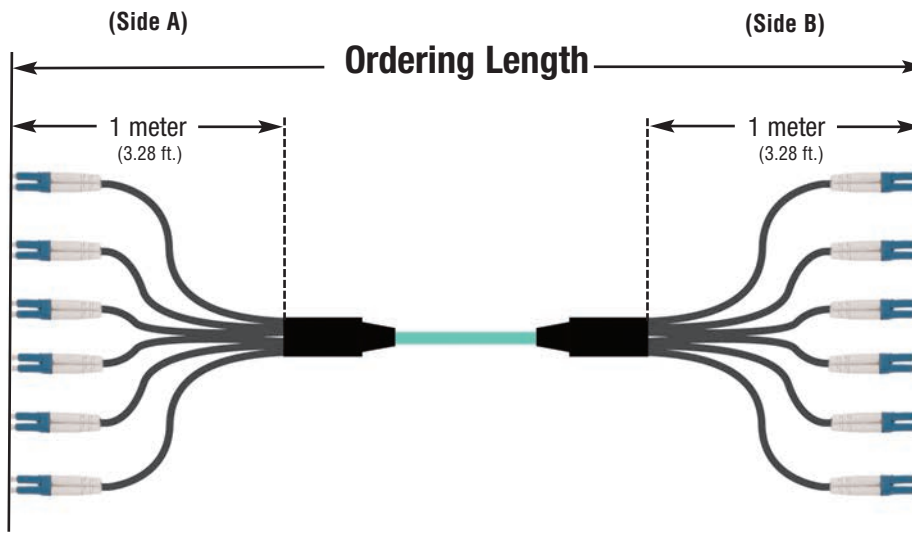


2.4mm Unitube Duplex Breakout - LC BladePatch®

Ordering Information:



Ordering length is measured connector tip to connector tip.
2.4 unitube duplex,
Minimum order length is 3 meters (9.8 ft).



Fiber System Optical Performance

LIGHTSTACK MODULES

| | Insertion Loss (dB) | Return Loss (dB) | Insertion Loss (dB) | Return Loss (dB) |
|-------------------------|---------------------|------------------|---------------------|------------------|
| | Multimode | | Singlemode | |
| MTP | 0.20 | 20 | 0.60 | 65 |
| LC | 0.15 | 30 | 0.40 | 60 |
| MTP to LC Module | 0.35 | 20 | 1.00 | 60 |

STANDARD LOSS ASSEMBLIES

| Fiber Type | | MAX Insertion (dB) | | MAX Return Loss (dB) | | Performance Class |
|------------|--------------|--------------------|------|----------------------|----|-------------------|
| | | MTP | LC | MTP | LC | |
| 5L-MM | 50/125 (OM3) | 0.50 | 0.25 | 20 | 30 | XGLO® 300 |
| 5V-MM | 50/125 (OM4) | 0.50 | 0.25 | 20 | 30 | XGLO 550 |
| SM-LWP | SM (OS1/OS2) | 0.60 | 0.40 | 65 | 55 | XGLO |

LOW LOSS ASSEMBLIES

| Fiber Type | | MAX Insertion (dB) | | MAX Return Loss (dB) | | Performance Class |
|------------|--------------|--------------------|------|----------------------|----|-------------------|
| | | MTP | LC | MTP | LC | |
| 5L-MM | 50/125 (OM3) | 0.20 | 0.15 | 20 | 30 | XGLO 300 |
| 5V-MM | 50/125 (OM4) | 0.20 | 0.15 | 20 | 30 | XGLO 550 |

Visit: <http://www.siemon.com/us/plug-and-play/>
to find out more about Siemon Plug & Play Trunking solutions

Visit: <http://www.siemon.com/lightstack>
to find out more about the Siemon LightStack solution

Because we continuously improve our products, Siemon reserves the right to change specifications and availability without prior notice.

**Worldwide Headquarters
North America**
Watertown, CT USA
Phone (1) 860 945 4200 US
Phone (1) 888 425 6165

**Regional Headquarters
Europe/Russia/Africa**
Chertsy, Surrey, England
Phone (44) 0 1932 571771

**Regional Headquarters
China**
Shanghai, P.R. China
Phone (86) 215385 0303

**Regional Headquarters
Latin America**
Bogota, Colombia
Phone (571) 657 1950/51/52

**Regional Headquarters
Middle East**
Dubai, United Arab Emirates
Phone (971) 4 3689743
Phone (971) 50 5518716

**Regional Headquarters
Asia/Pacific**
Frenchs Forest
Sydney, Australia
Phone (86) 21 5385 0303

**Siemon Interconnect
Solutions**
Watertown, CT USA
Phone (1) 860 945 4213 US
www.siemon.com/SIS