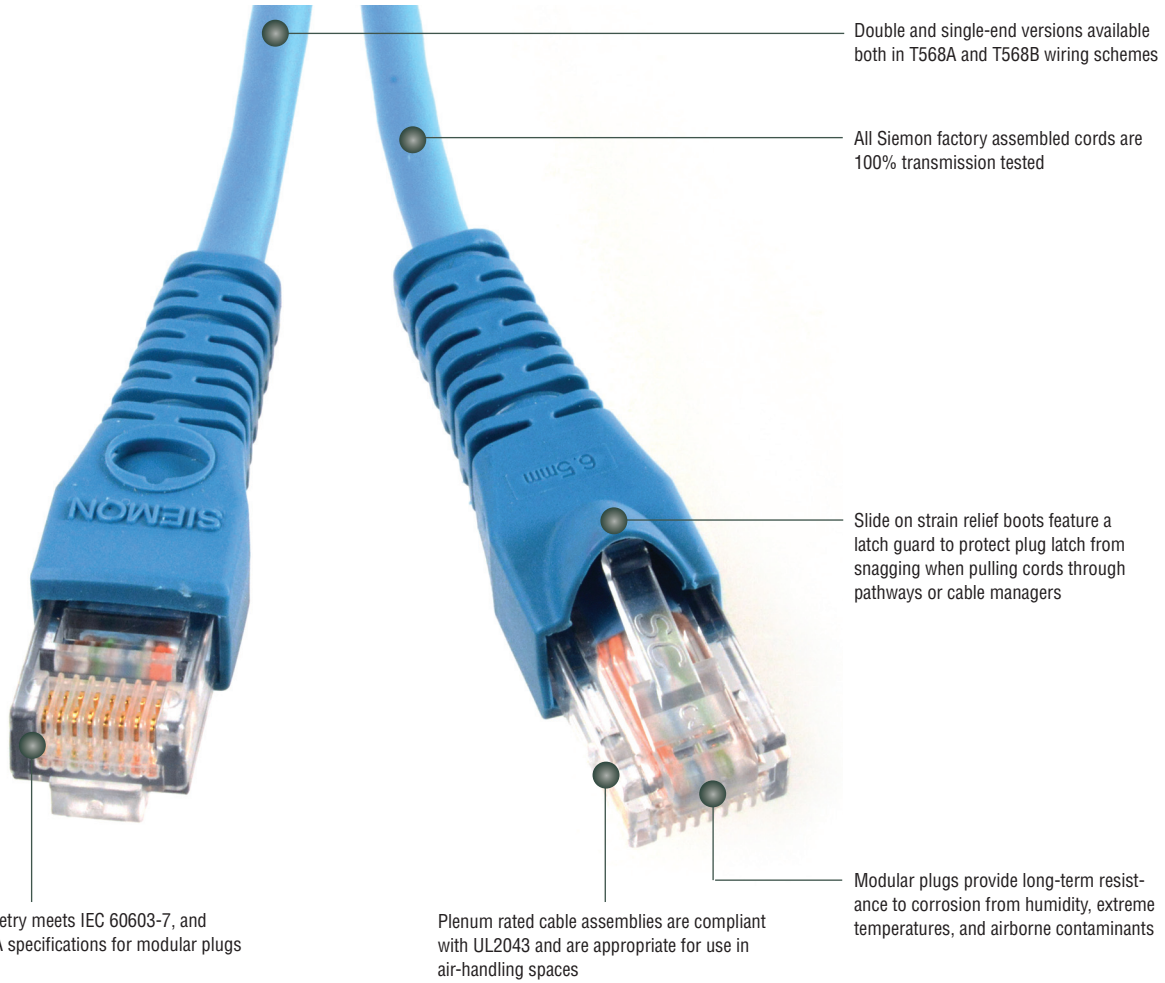


IC[®] 5e UTP SOLID MODULAR CORDS - US

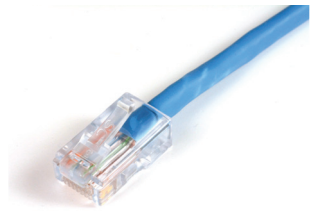
Siemon's Category 5e IC solid conductor modular cords are designed for use in Category 5e applications requiring a consolidation point (CP) or cross-connect (as an equipment cord). The cords are 100% factory transmission tested. These cords are available in Plenum and Riser jacket and can be ordered single-ended for direct terminations or double-ended for extended length direct connections.



Plug geometry meets IEC 60603-7, and TIA 1096-A specifications for modular plugs

Plenum rated cable assemblies are compliant with UL2043 and are appropriate for use in air-handling spaces

Modular plugs provide long-term resistance to corrosion from humidity, extreme temperatures, and airborne contaminants



Non-Booted version also available



Strain and bend relief provides improved plug-to-cable retention and maximum performance by preventing pair deformation, as caused by mechanical strain

COMPLIANCE

- ANSI/TIA-568.2-D
- TIA-1096-A
- ISO/IEC 11801-1 Ed 1.0
- IEC 60603-7
- IEEE 802.3af (Type 1 PoE)
- IEEE 802.3at (Type 2 PoE)
- IEEE 802.3bt (Type 3 PoE)
- IEEE 802.3bt (Type 4 PoE)
- Power over HDBaseT (PoH)
- ANSI/TIA-968-B
- UL CMR and CSA FT4
- UL CMP and CSA FT6

PRODUCT INFORMATION

PERFORMANCE SPECIFICATIONS*

ELECTRICAL	
Contact Resistance	20 mΩ
Input to Output DC Resistance	200 mΩ
Min. Dielectric Withstand Voltage (contact to contact)	1000 V DC or AC peak
Insulation Resistance	500 mΩ
Current Rating @ 25° C	1.5 A
Power over Ethernet	Suitable for all PoE applications, PoH
MECHANICAL — GENERAL	
Operating Temperature	-10 to 60 °C, (14 to 140 °F)
Flammability Rating	UL 94 - V0
Contact Materials	copper alloy
Plastic Materials	Flame retardant thermoplastic
Marking	P/N, length, performance level, QC

MECHANICAL — PLUG	
Number of Plug Insertion Cycles	750
Min. Plug Retention Force	50N (11.2 lbf)
Plug Compatibility	Compatible with RJ45 outlets
MECHANICAL — CABLE	
Wire Size (Nominal)	24 AWG solid
Construction	UTP
Cable O.D. (Nominal)	0.19 in. (4.8mm)
Wiring	T568A/B as specified by part #
Jacket Type	CMR or CMP as specified by part #
Bend Radius	1.0 in. (25mm)

*Refer to Siemon Cable spec sheets for additional performance, electrical and mechanical information.

Ordering Information

IC5e UTP SOLID MODULAR CORDS:

Siemon's IC5e solid conductor modular cords are available as single-ended or double ended T568A or T568B assemblies

BOOT	IC5-8(X)-(XX)-B(XX)(X)(X)
Wiring Scheme	Termination Type
A = T568B	blank = single-ended/RJ45 on one end
T = T568A	D = double-ended/RJ45 on both ends
Cord Length	Cable Jacket
10 = 3.1m (10 ft.)	R = Riser (CMR, CSA FT4), blue jacket
20 = 6.1m (20 ft.)	P = Plenum (CMP, FT6), blue jacket
30 = 9.1m (30 ft.)	Boot Color
40 = 12.2m (40 ft.)	01 = black
50 = 15.2m (50 ft.)	02 = white
60 = 18.3m (60 ft.)	03 = red
	04 = gray
	05 = yellow
	06 = blue
	07 = green
	08 = violet
	09 = orange

NON-BOOT	IC5-8(X)-(XX)(X)(X)
Wiring Scheme	Termination Type
A = T568B	blank = single-ended/RJ45 on one end
T = T568A	D = double-ended/RJ45 on both ends
Cord Length	Cable Jacket
10 = 3.1m (10 ft.)	R = Riser (CMR, CSA FT4), blue jacket
20 = 6.1m (20 ft.)	P = Plenum (CMP, FT6), blue jacket
30 = 9.1m (30 ft.)	
40 = 12.2m (40 ft.)	
50 = 15.2m (50 ft.)	
60 = 18.3m (60 ft.)	

Because we continuously improve our products, Siemon reserves the right to change specifications and availability without prior notice.

NORTH AMERICA

Watertown, CT USA
Phone (1) 860 945 4200 US
Phone (1) 888 425 6165 Canada

EUROPE/MIDDLE EAST/AFRICA

Surrey, England
Phone (44) 0 1932 571771

ASIA/PACIFIC

Shanghai, P.R. China
Phone (86) 21 5385 0303

LATIN AMERICA

Bogota, Colombia
Phone (571) 657 1950

