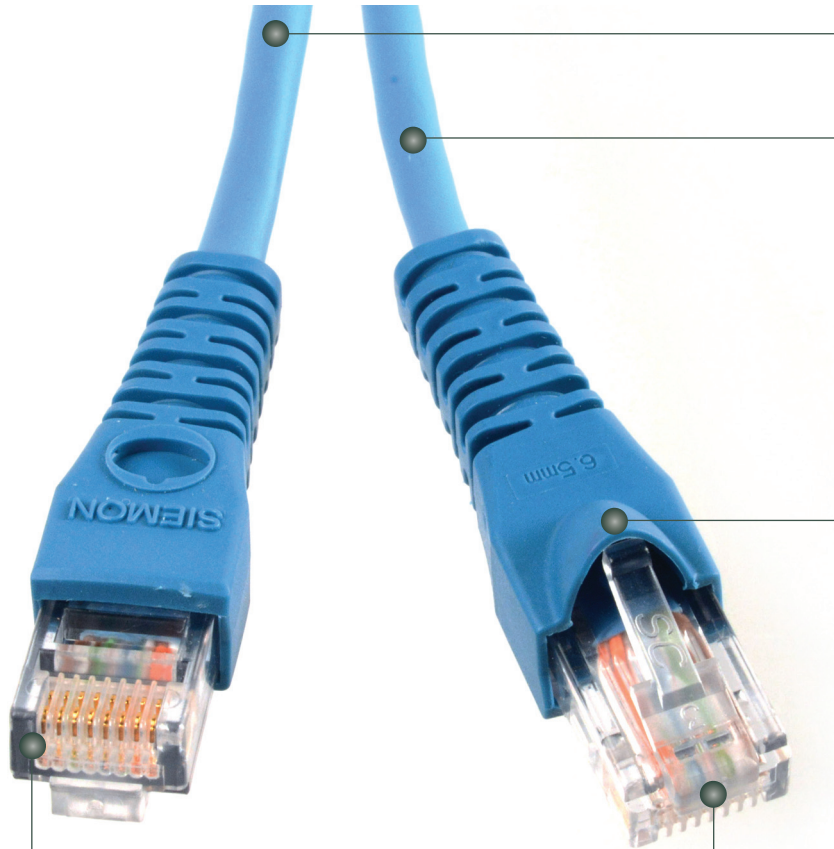


# IC® 5e UTP Solid Modular Cords - International

Siemon's Category 5e IC solid conductor modular cords are designed for use in Category 5e applications requiring a consolidation point (CP) or cross-connect (as an equipment cord). The cords are 100% factory transmission tested. These cords are available in CM, LSOH, and riser jacket and can be ordered single-ended for direct terminations or double-ended for extended length direct connections.



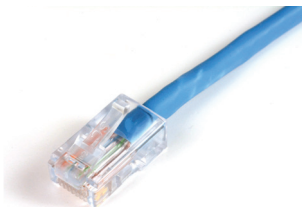
Double and single-end versions available both in T568A and T568B wiring schemes

All Siemon factory assembled cords are 100% transmission tested

Slide on strain relief boots feature a latch guard to protect plug latch from snagging when pulling cords through pathways or cable managers

Plug geometry meets IEC 60603-7, and TIA 1096-A specifications for modular plugs

Modular plugs provide long-term resistance to corrosion from humidity, extreme temperatures, and airborne contaminants



Non-Booted version also available



Strain and bend relief provides improved plug-to-cable retention and maximum performance by preventing pair deformation, as caused by mechanical strain

## COMPLIANCE

- ISO/IEC 11801 Ed. 2.2
- IEC 60603-7
- ANSI/TIA-568-C.2
- TIA-1096-A
- IEEE 802.3af (PoE)
- IEEE 802.3at (PoE+)
- ANSI/TIA-968-B
- UL CMR and CSA FT4
- UL CM
- LSOH: IEC 60332-1, IEC 60754, and IEC61034

# Product Information

## PERFORMANCE SPECIFICATIONS\*

ELECTRICAL	
Contact Resistance	20 mΩ
Input to Output DC Resistance	200 mΩ
Min. Dielectric Withstand Voltage (contact to contact)	1000 V DC or AC peak
Insulation Resistance	500 mΩ
Current Rating @ 25° C	1.5 A
Power over Ethernet	Suitable for all PoE applications
MECHANICAL — GENERAL	
Operating Temperature	-10 to 60 °C, (14 to 140 °F)
Flammability Rating	UL 94 - V0
Contact Materials	copper alloy
Plastic Materials	Flame retardant thermoplastic
Marking	P/N, length, performance level, QC

MECHANICAL — PLUG	
Number of Plug Insertion Cycles	750
Min. Plug Retention Force	50N (11.2 lbf)
Plug Compatibility	Compatible with RJ45 outlets
MECHANICAL — CABLE	
Wire Size (Nominal)	24 AWG solid
Construction	UTP
Cable O.D. (Nominal)	0.19 in. (4.8mm)
Wiring	T568A/B as specified by part #
Jacket Type	LS0H-1 CM Riser as specified by part #
Bend Radius	1.0 in. (25mm)

\*Refer to Siemon Cable spec sheets for additional performance, electrical and mechanical information.



## IC 5e Solid UTP Modular Cords

Siemon's IC5e solid conductor modular cords are available as single-ended or double-ended T568A or T568B assemblies. Siemon's solid, single-ended IC5e cable assemblies are designed for patching between the consolidation point and the back of the work area outlet or as equipment cords in cross-connect applications. These assemblies are constructed using cable that exceeds all Category 5e specifications.

## Ordering Information:

**NON-BOOT** IC5-8(X)-(XX)M(X)(X) . . . . . Category 5e IC, UTP solid cord,  
no boot

<b>Wiring</b> <b>A</b> = T568B <b>T</b> = T568A	<b>Termination Type</b> <b>Blank</b> = Single-Ended (RJ45 on one end) <b>D</b> = Double-Ended (RJ45 on both ends)
<b>Length</b> <b>03</b> = 3m (9.8 ft.) <b>05</b> = 5m (16.4 ft.) <b>10</b> = 10m (32.8 ft.) <b>15</b> = 15m (49.2 ft.) <b>20</b> = 20m (65.6 ft.)	<b>Jacket Material</b> <b>L</b> = LS0H, Violet Jacket <b>M</b> = CM, Grey Jacket <b>R</b> = Riser, Blue Jacket

**BOOT** IC5-8(X)-(XX)M-B(XX)(X)(X) . . . . . Category 5e IC, UTP solid cord,  
coloured boot

<b>Wiring</b> <b>A</b> = T568B <b>T</b> = T568A	<b>Termination Type</b> <b>Blank</b> = Single-Ended (RJ45 on one end) <b>D</b> = Double-Ended (RJ45 on both ends)
<b>Length</b> <b>03</b> = 3m (9.8 ft.) <b>05</b> = 5m (16.4 ft.) <b>10</b> = 10m (32.8 ft.) <b>15</b> = 15m (49.2 ft.) <b>20</b> = 20m (65.6 ft.)	<b>Jacket Material</b> <b>L</b> = LS0H, Violet Jacket <b>M</b> = CM, Grey Jacket <b>R</b> = Riser, Blue Jacket
<b>Boot Colour</b> <b>01</b> = Black <b>02</b> = White <b>03</b> = Red <b>04</b> = Grey <b>05</b> = Yellow <b>06</b> = Blue <b>07</b> = Green	

Because we continuously improve our products, Siemon reserves the right to change specifications and availability without prior notice.

**Worldwide Headquarters**  
**North America**  
Watertown, CT USA  
Phone (1) 860 945 4200

**Regional Headquarters**  
**Europe Africa**  
Chertsey, Surrey, England  
Phone (44) 0 1932 571771

**Regional Headquarters**  
**China**  
Shanghai, P.R. China  
Phone (86) 215385 0303

**Regional Headquarters**  
**Latin America**  
Bogota, Colombia  
Phone (571) 657 1950/51/52

**Regional Headquarters**  
**India Middle East**  
Dubai, United Arab Emirates  
Phone (971) 4 3689743

**Regional Headquarters**  
**Asia Pacific**  
Sydney, Australia  
Phone (86) 21 5385 0303

**Siemon Interconnect Solutions**  
**Watertown, CT USA**  
Phone (1) 860 945 4213 US  
[www.siemon.com/SIS](http://www.siemon.com/SIS)



[www.siemon.com](http://www.siemon.com)