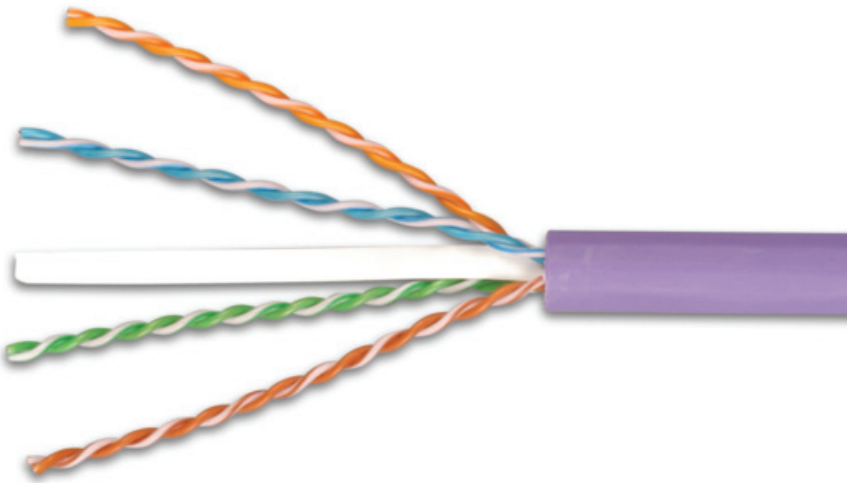


CATEGORY 6A UTP CABLE

Siemon's Category 6A UTP cable exceeds ANSI/TIA and ISO/IEC transmission performance requirements including alien crosstalk. When combined with Z-MAX 6A UTP connectivity, the result is a channel capable of supporting 10GBASE-T operation over 100-meter, 4-connector topologies. The 6A UTP cabling system supports emerging and converging IP applications like Voice Over IP (VoIP), IP video and other 10GBase-T applications.



CABLE FEATURES

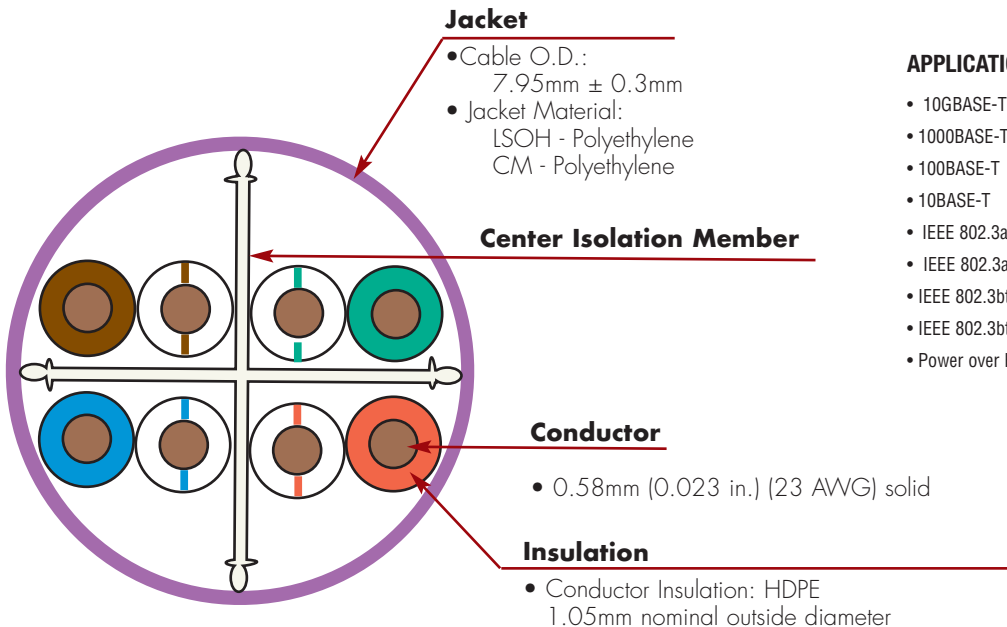
- UTP
- Nominal jacket OD: 7.95 (0.31 in.)
- 23 AWG 0.58mm (0.023 in.) solid bare copper
- Center Isolation Member
- 75° C temperature rating

STANDARD COMPLIANCE

- ISO/IEC 11801-1 Ed 1.0
- ANSI/TIA-568.2-D
- IEC 61156-5 Ed 2.1
- CM: UL, IEC, 60332-1
- LSOH: ISO/IEC 60332-1, IEC 60754 and IEC 61034
- EN 50575 Class Eca

APPLICATIONS SUPPORT:

- 10GBASE-T
- 1000BASE-T
- 100BASE-T
- 10BASE-T
- IEEE 802.3af (Type 1 PoE)
- IEEE 802.3at (Type 2 PoE)
- IEEE 802.3bt (Type 3 PoE)
- IEEE 802.3bt (Type 4 PoE)
- Power over HDBaseT (PoH)



ELECTRICAL SPECIFICATIONS

DC Resistance	8.6 Ω/100m nominal
DC Resistance Unbalance	within pairs ≤2%, between pairs ≤5%
Mutual Capacitance	5.6 nF/100m
Capacitance Unbalance	<330 pF/100m
TCL	≥50-10*log(f/100) dB
Delay Skew	≤ 45ns
NVP	65%

PHYSICAL PROPERTIES

	LSOH/CM
Pulling Tension (max)	100N (22 lbf)
Installation Temperature	0 to 50°C (+32 to 122°F)
Operating Temperature	-20 to 75°C (-4 to 167°F)
Storage Temperature	-20 to 75°C (-4 to 167°F)
Bend Radius (min)	64mm

TRANSMISSION PERFORMANCE

GUARANTEED WORST CASE
 SIEMON TYPICAL

Frequency (MHz)	Insertion Loss (dB)		NEXT (dB)		PS NEXT (dB)		ACR-F (dB)		PS ACR-F (dB)		Return Loss (dB)		ACR-N (dB)		PS ACR-N (dB)		Propagation Delay (ns)	
	Guaranteed Worst Case	Siemon Typical	Guaranteed Worst Case	Siemon Typical	Guaranteed Worst Case	Siemon Typical	Guaranteed Worst Case	Siemon Typical	Guaranteed Worst Case	Siemon Typical	Guaranteed Worst Case	Siemon Typical	Guaranteed Worst Case	Siemon Typical	Guaranteed Worst Case	Siemon Typical	Guaranteed Worst Case	Siemon Typical
1.0	2.1	1.8	75.3	101.6	73.3	99.0	73.3	91.7	71.3	89.0	20.0	24.6	73.2	99.8	71.2	97.2	570	557
4.0	3.8	3.7	66.3	82.7	64.3	81.6	61.3	81.0	59.3	78.0	23.0	29.7	62.5	79.1	60.5	78.0	552	542
10.0	5.9	5.9	60.3	77.4	58.3	77.1	53.3	74.3	51.3	71.4	25.0	37.4	54.4	71.7	52.4	71.3	545	536
16.0	7.5	7.4	57.2	81.3	55.2	79.2	49.2	68.2	47.2	66.2	25.0	36.7	49.8	74.0	47.8	71.9	543	534
20.0	8.4	8.3	55.8	82.1	53.8	78.7	47.3	65.1	45.3	63.5	25.0	35.8	47.4	74.0	45.4	70.6	542	534
31.25	10.5	10.4	52.9	72.7	50.9	69.9	43.4	59.5	41.4	58.3	23.7	34.8	42.4	62.5	40.4	59.8	540	532
62.5	15.0	14.8	48.4	67.6	46.4	66.6	37.4	50.7	35.4	49.9	21.5	31.7	33.4	53.2	31.4	52.3	539	530
100.0	19.1	18.7	45.3	67.6	43.3	65.9	33.3	49.2	31.3	47.4	20.1	33.6	26.2	49.3	24.2	47.8	538	530
160.0	24.5	23.8	42.2	61.0	40.2	58.4	29.2	49.0	27.2	46.3	18.7	29.8	17.7	37.7	15.7	35.3	537	529
200.0	27.6	26.6	40.8	58.0	38.8	55.1	27.3	43.2	25.3	41.3	18.0	29.1	13.2	32.0	11.2	29.1	537	529
250.0	31.1	29.9	39.3	56.9	37.3	54.9	25.3	44.2	23.3	42.3	17.3	27.5	8.3	28.0	6.3	26.0	536	528
300.0	34.3	32.9	38.1	49.4	36.1	49.3	23.8	42.1	21.8	39.1	17.3	24.8	3.9	17.3	1.9	17.1	536	528
400.0	40.1	38.3	36.3	47.5	34.3	47.2	21.3	37.5	19.3	35.1	17.3	21.2	-3.8	10.1	-5.8	9.8	536	528
500.0	45.3	43.1	34.8	47.3	32.8	46.3	19.3	32.3	17.3	31.8	17.3	21.6	-10.4	5.1	-12.4	3.9	536	528
550.0*	-	45.2	-	44.9	-	43.4	-	30.5	-	29.3	-	20.6	-	0.4	-	-1.1	-	528
625.0*	-	48.1	-	35.1	-	35.0	-	29.0	-	26.8	-	20.0	-	-12.3	-	-13.0	-	528
750.0*	-	54.2	-	41.8	-	39.5	-	32.6	-	30.0	-	21.0	-	-10.9	-	-13.1	-	528

* Values above 500 MHz are informational only.

All performance based on 100 meters (328 ft.).

Ordering Information:

Part # Description
 9C6L4-A5 LSOH (IEC 60332-1), class E_{ca} violet jacket 305m (1000 ft.) reel
 9C6M4-A5-04-RIA . . CM (IEC 60332-1), class E_{ca} gray jacket, 305m (1000 ft.) reel

For additional reel put-ups and cable colors, please contact Siemon Customer Service.

Because we continuously improve our products, Siemon reserves the right to change specifications and availability without prior notice.

Worldwide Headquarters
North America
 Watertown, CT USA
 Phone (1) 860 945 4200

Regional Headquarters
Europe Russia Africa
 Chertsy, Surrey, England
 Phone (44) 0 1932 571771

Regional Headquarters
China
 Shanghai, P.R. China
 Phone (86) 215385 0303

Regional Headquarters
Latin America
 Bogota, Colombia
 Phone (571) 657 1950/51/52

Regional Headquarters
India Middle East
 Dubai, United Arab Emirates
 Phone (971) 4 3689743

Regional Headquarters
Asia Pacific
 Sydney, Australia
 Phone (86) 21 5385 0303

Siemon Interconnect Solutions
Watertown, CT USA
 Phone (1) 860 945 4213 US
 www.siemon.com/SIS

