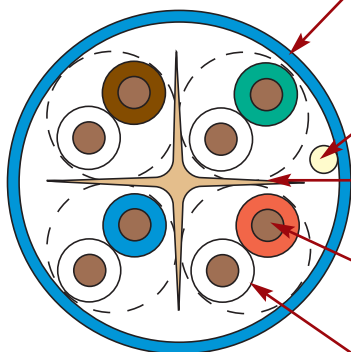
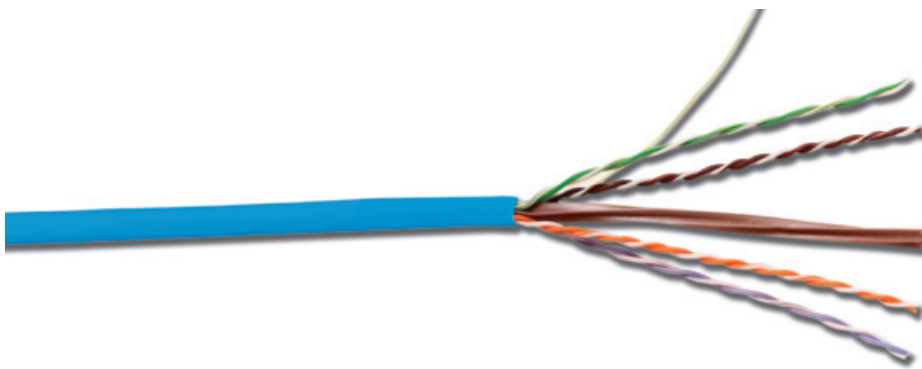


# SYSTEM 6® UTP CABLE —RISER & PLENUM

Siemon offers multiple levels of system performance based on our high-performance category 6 UTP connectivity, including System 6 UTP cable with exceptional margin on all parameters that exceeds ISO/IEC and TIA connecting hardware and channel performance specifications. The result is a system with superior electrical performance for optimum applications support. Available in Plenum and Riser with reverse sequential numbering and a minimal center isolation member for reduced overall diameter.



#### Jacket

- Nominal Cable O.D.:  
CMR – 0.236 in.  
CMP – 0.225 in.

#### Rip Cord

- Applied longitudinally under cable jacket

#### Isolation Member

- Maintains pair geometry before, during and after installation for optimal NEXT Loss performance

#### Conductor

- 0.57mm (0.024 in.) 23 AWG solid bare copper

#### Insulation

- Conductor Insulation:  
CMR – PE  
CMP – FEP

#### CABLE FEATURES:

- Nominal jacket OD:
  - CMR = .236 in.
  - CMP = .225 in.
- 23 AWG 0.57mm (0.024 in.) solid bare copper
- Reverse sequential numbering
- Round jacket
- Jacket material is lead free

#### STANDARDS COMPLIANCE:

- ISO/IEC 11801-1 Ed.1.0
- IEC 61156-5
- TIA-568.2-D
- UL-CMR and CSA FT4
- UL-CMP and CSA FT6
- RoHS

#### APPLICATIONS SUPPORT

- 1000BASE-T
- 100BASE-T
- 10BASE-T
- IEEE 802.3af (Type 1 PoE)
- IEEE 802.3at (Type 2 PoE)
- IEEE 802.3bt (Type 3 PoE)
- IEEE 802.3bt (Type 4 PoE)
- Power over HDBaseT (PoH)

# PRODUCT INFORMATION

## System 6® UTP Cable

ELECTRICAL SPECIFICATIONS	CMR / CMP
DC Resistance	<9.38 Ω/100m
DC Resistance Unbalance	5%
Mutual Capacitance	5.6 nF/100m
Capacitance Unbalance	<330 pF/100m
NVP	CMR 65% CMP 68%
TCL/LCL	30-10log(f/100)dB
Delay Skew	≤ 35ns/100m

PHYSICAL PROPERTIES	CMR	CMP
Pulling Tension (max)	110N (25 lbf)	110N (25 lbf)
Bend Radius (min)	25mm (1 in.)	25mm (1 in.)
Installation Temperature	-36 to 60°C (-32 to 140°F)	0 to 60°C (32 to 140°F)
Storage Temperature	-34 to 75°C (-30 to 167°F)	-20 to 75°C (-4 to 167°F)
Operating Temperature	-34 to 75°C (-30 to 167°F)	-20 to 60°C (-4 to 140°F)

### TRANSMISSION PERFORMANCE

GUARANTEED WORST CASE\*
  SIEMON TYPICAL

Frequency (MHz)	Insertion Loss (dB)		NEXT (dB)		PS NEXT (dB)		ACR (dB)		PSACR (dB)		ACR-F (dB)		PS ACR-F (dB)		Return Loss (dB)		Propagation Delay (ns)	
	Guaranteed	Typical	Guaranteed	Typical	Guaranteed	Typical	Guaranteed	Typical	Guaranteed	Typical	Guaranteed	Typical	Guaranteed	Typical	Guaranteed	Typical	Guaranteed	Typical
1.0	2.0	1.8	77.3	87.3	75.3	82.3	75.3	85.5	73.3	80.5	70.8	84.8	68.8	79.8	21.0	29.0	550	545
4.0	3.8	3.5	68.3	78.3	66.3	73.3	64.5	74.8	62.5	69.8	58.8	72.8	56.8	67.8	24.0	32.0	532	527
10.0	5.9	5.6	62.3	72.3	60.3	67.3	56.4	66.7	54.4	61.7	50.8	64.8	48.8	59.8	26.0	38.0	525	520
16.0	7.5	7.1	59.2	69.2	57.2	64.2	51.8	62.1	49.8	57.1	46.7	60.7	44.7	55.7	26.0	34.0	523	518
20.0	8.4	7.9	57.8	67.8	55.8	62.8	49.4	59.9	47.4	54.9	44.8	58.8	42.8	53.8	26.0	34.0	522	517
31.25	10.6	10.0	54.9	64.9	52.9	59.9	44.3	54.9	42.3	49.9	40.9	54.9	38.9	49.9	24.6	32.0	520	515
62.5	15.2	14.4	50.4	60.4	48.4	55.4	35.1	46.0	33.1	41.0	34.9	48.9	32.9	43.9	22.5	32.0	519	514
100.0	19.6	18.6	47.3	57.3	45.3	52.3	27.7	38.7	25.7	33.7	30.8	44.8	28.8	39.8	21.1	32.0	518	513
160.0	25.4	24.1	44.2	54.2	42.2	49.2	18.9	30.1	16.9	25.1	26.7	40.7	24.7	35.7	19.7	31.0	517	512
200.0	28.7	26.8	42.8	52.8	40.8	47.8	14.1	26.0	12.1	21.0	24.8	38.8	22.8	33.8	19.0	29.0	517	512
250.0	32.6	30.5	41.3	51.3	39.3	46.3	8.8	20.8	6.8	15.8	22.8	37.0	20.8	31.8	18.3	29.0	516	511
300.0*	-	33.7	-	50.0	-	45.0	-	16.3	-	11.3	-	36.0	-	30.0	-	27.0	-	511
400.0*	-	40.3	-	48.0	-	43.0	-	7.7	-	2.7	-	32.0	-	27.0	-	26.0	-	511
500.0*	-	39.9	-	48.0	-	42.0	-	8.1	-	2.1	-	31.0	-	26.0	-	25.0	-	511
550.0*	-	39.7	-	46.0	-	42.0	-	6.3	-	2.3	-	30.0	-	26.0	-	24.0	-	510

\*Performance for frequencies above 250 MHz are for information only.

All performance based on 100 meters (328 ft.).

### System 6, 4-Pair UTP Cable:

Part #	Description
9C6R4-E3-(XX)-RXA . . . . .	Riser, 1000 ft. Reelex
9C6P4-E3-(XX)-RXA . . . . .	Plenum, 1000 ft. Reelex

Use (XX) to specify jacket color: 02 = white, 03 = red, 04 = gray, 05 = yellow, 06 = blue, 07 = green, 08 = violet, 09 = orange

Because we continuously improve our products, Siemon reserves the right to change specifications and availability without prior notice.

**Worldwide Headquarters  
North America**  
Watertown, CT USA  
Phone (1) 860 945 4200

**Regional Headquarters  
Europe Russia Africa**  
Chertsy, Surrey, England  
Phone (44) 0 1932 571771

**Regional Headquarters  
China**  
Shanghai, P.R. China  
Phone (86) 215385 0303

**Regional Headquarters  
Latin America**  
Bogota, Colombia  
Phone (571) 657 1950/51/52

**Regional Headquarters  
India Middle East**  
Dubai, United Arab Emirates  
Phone (971) 4 3689743

**Regional Headquarters  
Asia Pacific**  
Sydney, Australia  
Phone (86) 21 5385 0303

**Siemon Interconnect Solutions  
Watertown, CT USA**  
Phone (1) 860 945 4213 US  
www.siemon.com/SIS