

# BladePatch® 6 UTP Modular Cords

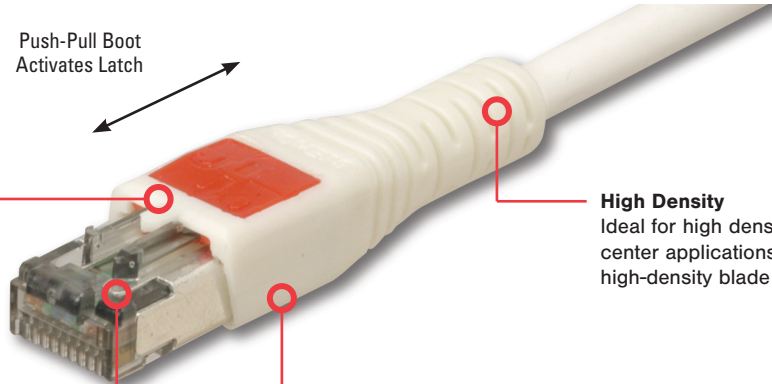
Siemon's BladePatch 6 offers a unique Category 6 solution for high-density patching environments. It features an innovative push-pull boot design to control the latch, enabling easy access and removal of the cord in tight-fitting areas. The BladePatch cord is ideal for patching blade servers, patch panels, or any equipment with high density RJ-45 outlets.



### Snagless

Push-pull latch design eliminates external thumb latch used in standard modular plug designs which can snag and break

Push-Pull Boot  
Activates Latch



### High Density

Ideal for high density data center applications and today's high-density blade servers

### Low Profile Boot Design

Optimizes side-stackability of patch cords and allows use in even the most dense equipment

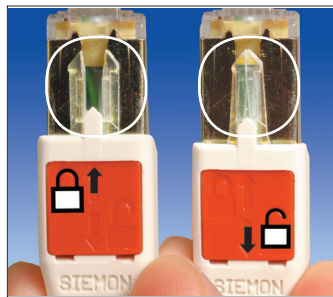
### Easy Access and Removal

RJ-45 patch cord with patent-pending push-pull latch design enables easy access and removal in high density patching environments



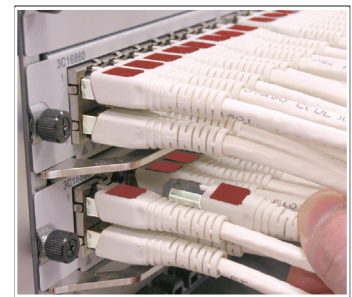
### Universal Compatibility

Fits within any standard RJ-45 opening.



### Revolutionary Latch

Simply push the boot forward to latch into the outlet and pull back to release.



### High Density

The push-pull design enables easy access and removal via the boot in tight-fitting areas.

# Performance Specifications\*

## ELECTRICAL

Contact Resistance	20Ω
Input to Output Resistance	200Ω
Min. Dielectric Withstand Voltage (contact to contact)	1000 V DC or AC peak
Insulation Resistance	500 mΩ
Compatibility	Backwards to Cat 5e
Current Rating @ 25°C	1.5 A
Power over Ethernet	Suitable for PoE and PoE+

## MECHANICAL - GENERAL

Operating Temperature	-10 to 60° C, (14 to 140° F)
Flammability Rating	UL 94 V-0
Green Features	RoHS, lead-free, halogen-free, PVC free
Contact Materials	Copper alloy with contact plating of 50 micro inches or equivalent
Plastic Materials	Flame retardant thermoplastic
Marking	P/N, length, performance level, QC

## MECHANICAL - PLUG

Number of Plug Insertion Cycles	750
Min. Plug Retention Force	50N (11.2 lbf)
Plug Compatibility	Compatible with RJ45

## MECHANICAL - TERMINATION

Wire Size Range (Nominal)	24 AWG 7x34 Stranded tinned copper
Cable Construction	UTP
Cable OD (Nominal)	5.8mm (0.22 in)
Wiring	T568A/B
Jacket type	CMG
Bend Radius	25mm (1.0 in.)

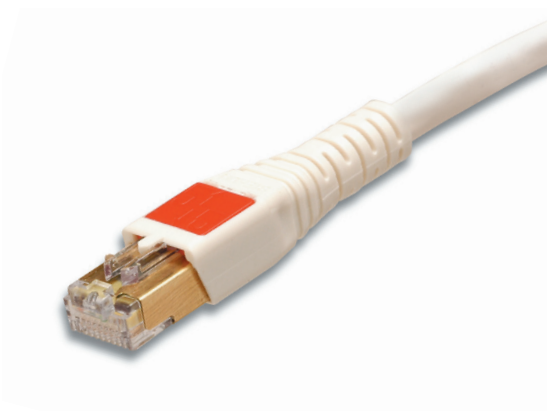
## Ordering Information

### BladePatch 6 UTP

Category 6 UTP BladePatch, double-ended, RJ-45 modular patch cord with push-pull latching design, color matching cord/boot, T568A/B.

BP6-(XX)-(XX)

Cord Length	Cord Color
01 = 1m (3.3 ft.)	01 = Black
1.5 = 1.5m (4.9 ft.)	02 = White
02 = 2m (6.6 ft.)	03 = Red
03 = 3m (9.8 ft.)	04 = Gray
05 = 5m (16.4 ft.)	05 = Yellow
7.5 = 7.5m (24.6 ft.)	06 = Blue
	07 = Green
	08 = Violet
	09 = Orange



Add "B" for bulk pack of 100 modular cords.

Because we continuously improve our products, Siemon reserves the right to change specifications and availability without prior notice.

<b>North America</b> P: (1) 860 945 4200	<b>Asia Pacific</b> P: (61) 2 8977 7500	<b>Latin America</b> P: (571) 657 1950/51/52	<b>Europe</b> P: (44) 0 1932 571771	<b>China</b> P: (86) 215385 0303	<b>India Middle East</b> P: (971) 4 3689743
---	--	---	--	-------------------------------------	--

**Siemon Interconnect Solutions**  
P: (1) 860 945 4213  
www.siemon.com/SIS

WWW.SIEMON.COM

