

# Category 6A UTP BladePatch<sup>®</sup> Modular Cords

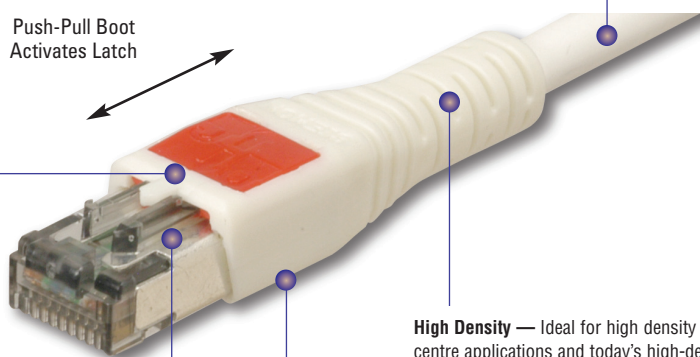
Siemon's Category 6A UTP BladePatch patch cord offers a unique Category 6A solution for high-density patching environments. It features an innovative push-pull boot design to control the latch, enabling easy access and removal of the cord in tight-fitting areas.

The BladePatch cord is ideal for patching blade servers, patch panels, or any equipment with high density RJ-45 outlets.

**Snagless** — Push-pull latch design eliminates external thumb latch used in standard modular plug designs which can snag and break

**High Performance** — Cords feature dual jacket construction for excellent alien crosstalk performance

Push-Pull Boot  
Activates Latch



**Easy Access and Removal** — RJ-45 patch cord with patent-pending push-pull latch design enables easy access and removal in high density patching environments

**High Density** — Ideal for high density data centre applications and today's high-density blade servers

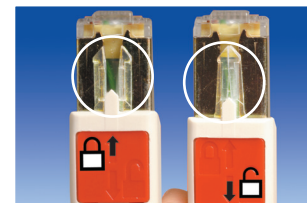
**Low Profile Boot Design** — Optimises side-stackability of patch cords and allows use in even the most dense equipment

## STANDARDS COMPLIANCE

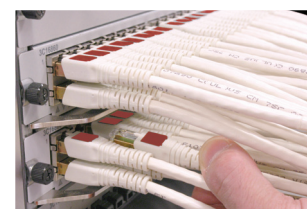
- TIA-568-C.2
- ISO/IEC 11801: Ed 2.2
- IEEE 802.3an (10GBASE-T)
- IEEE 802.3af (PoE)
- IEEE 802.3at (PoE+)
- IEC 60603-7
- ANSI/TIA-1096-A
- IEC 60603-7-41



**Universal Compatibility**  
Fits within any standard RJ-45 outlet.



**Revolutionary Latch**  
Simply push the boot forward to latch into the outlet and pull back to release.



**High Density**  
The push-pull design enables easy access and removal via the boot in tight-fitting areas.

## Performance Specification Chart:

ELECTRICAL	
Contact Resistance	10 mΩ
Input to Output Resistance	200 mΩ
Min. Dielectric Withstand Voltage (contact to contact)	1000 V DC or AC peak
Insulation Resistance	500 mΩ
Compatibility	Backwards to cat 5e and cat 6
Current Rating	1.5 A
PoE	Suitable for PoE and PoE+
Surface Transfer Impedance	< 10 mΩ/m @ 10 MHz
MECHANICAL – GENERAL	
Operating Temperature	-10 to 60 °C [14 to 140 °F]
Flammability Rating	UL 94 V-0
Green Features	RoHS, lead-free, halogen-free, PVC free
Plug Housing Material	Polycarbonate
Contact Materials	50 microinches gold plating or equivalent
Plastic Materials	Flame retardant thermoplastic
Screen	360 degree enclosure
Marking	P/N, length, performance level, QC
MECHANICAL – PLUG	
Number of Plug Insertion Cycles	2500
Min. Plug Retention Force	50N
Plug Compatibility	Compatible with RJ45 outlets
Cable to Plug Tensile Strength (min)	20 lbs

MECHANICAL – CABLE (STRANDED)	
Wire Size Range (nominal)	26 AWG 7x32 Stranded tinned copper
Cable Construction	UTP dual jacketed
Cable OD (nominal)	7.37mm (0.29 in.) outer, 6.43mm (0.25 in.) inner
Wiring	T568A/B
Jacket Type	CMG
Bend Radius	25mm (1.0 in.)

## Ordering Information:

Category 6A BladePatch double ended, 4-pair UTP stranded modular cord with push-pull latching design, colour matching cord/boot, T568A/B, CMG

BP6A-(XX)M-(XX)	
Cord Length	Cord Colour
01 = 1m (3.3 ft.)	01 = Black 04 = Grey 07 = Green
1.5 = 1.5m (5 ft.)	02 = White 05 = Yellow 08 = Violet
02 = 2m (6.6 ft.)	03 = Red 06 = Blue 09 = Orange
03 = 3m (9.8 ft.)	
04 = 4m (13.1 ft.)	
05 = 5m (16.5 ft.)	

The use of Category 6A UTP BladePatch modular cords will provide Category 6A channel performance if used in a Z-MAX 6A system.

Z-MAX 6A warranty margins do not apply.

Because we continuously improve our products, Siemon reserves the right to change specifications and availability without prior notice.

**Worldwide Headquarters  
North America**  
Watertown, CT USA  
Phone (1) 860 945 4200

**Regional Headquarters  
Europe Russia Africa**  
Chertsey, Surrey, England  
Phone (44) 0 1932 571771

**Regional Headquarters  
China**  
Shanghai, P.R. China  
Phone (86) 215385 0303

**Regional Headquarters  
Latin America**  
Bogota, Colombia  
Phone (571) 657 1950/51/52

**Regional Headquarters  
India Middle East**  
Dubai, United Arab Emirates  
Phone (971) 4 3689743

**Regional Headquarters  
Asia Pacific**  
Sydney, Australia  
Phone (86) 21 5385 0303

**Siemon Interconnect Solutions  
Watertown, CT USA**  
Phone (1) 860 945 4213 US  
www.siemon.com/SIS