

Category 6A Shielded BladePatch[®] Modular Cords

Category 6A shielded BladePatch patch cord offers a unique Category 6A solution for high-density patching environments. It features an innovative push-pull boot design to control the latch, enabling easy access and removal of the cord in tight-fitting areas. The BladePatch cord is ideal for patching blade servers, patch panels, or any equipment with high density RJ-45 outlets.

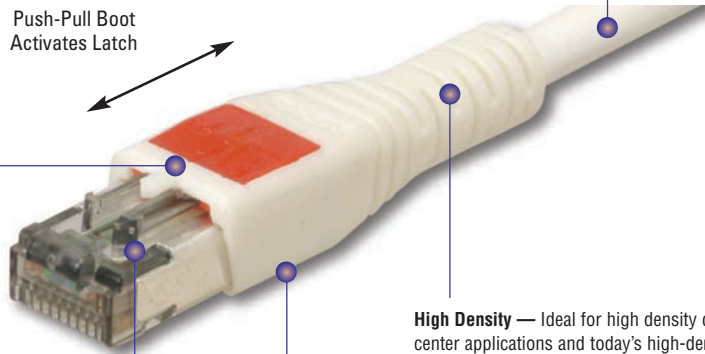


- STANDARD COMPLIANCE**
- ANSI/TIA-568-C.2
 - ISO/IEC 11801 Ed 2.2
 - IEEE 802.3an (10GBase-T)
 - IEEE 802.3af (PoE)
 - IEEE 802.3at (PoE+)
 - IEC 60603-7
 - UL 1863 and CSA-C22.2 No. 182.4-M90
 - IEC 60332-1 (LSOH)
 - IEC 60754 (LSOH)
 - IEC 61034 (LSOH)
 - ANSI/TIA-1096-A
 - IEC-60603-7-51

Snagless — Push-pull latch design eliminates external thumb latch used in standard modular plug designs which can snag and break

High Performance — Cords feature Category 7 S/FTP stranded cable for optimal transmission performance while eliminating alien crosstalk

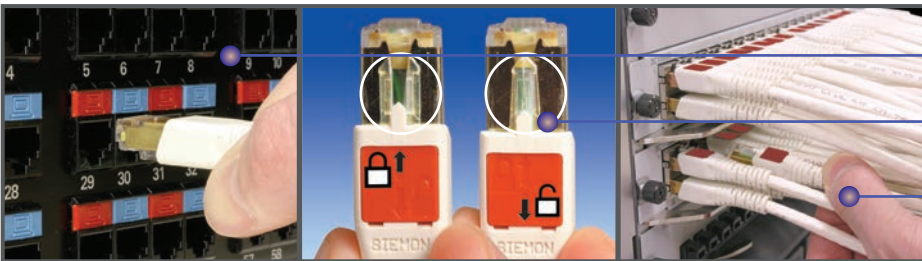
Push-Pull Boot
Activates Latch



High Density — Ideal for high density data center applications and today's high-density blade servers

Easy Access and Removal — RJ-45 patch cord with patent-pending push-pull latch design enables easy access and removal in high density patching environments

Low Profile Boot Design — Optimizes side-stackability of patch cords and allows use in even the most dense equipment



Fits within any standard RJ-45 opening.

Simply push the boot forward to latch into the outlet and pull back to release.

The push-pull design enables easy access and removal via the boot in tight-fitting areas.

Product Information

PERFORMANCE SPECIFICATIONS*

ELECTRICAL	
Contact Resistance	20 mΩ
Input to Output Resistance	200 mΩ
Min. Dielectric Withstand Voltage (contact to contact)	1000 V DC or AC peak
Insulation Resistance	500 mΩ
Compatibility	Backwards to Cat 5e and Cat 6
Current Rating @ 25° C	1.5 A
Power over Ethernet	Suitable for PoE and PoE+
Power over Ethernet	< 10 mΩ/m @ 10 MHz
MECHANICAL — GENERAL	
Operating Temperature	-10 to 60° C, (14 to 140° F)
Flammability Rating	UL 94 V-0
Green Features	RoHS, lead-free, halogen-free, PVC free
Plug Housing Materials	Polycarbonate
Contact Materials	50 microinches gold plating or equivalent
Plastic Materials	Flame retardant themoplastic
Screen	360 degree enclosure
Marking	P/N, length, performance level, QC

MECHANICAL — PLUG	
Number of Plug Insertion Cycles	2500
Min. Plug Retention Force	50N (11.2 lbf)
Plug Compatibility	Compatible with RJ45
Cable to Plug Tensile Strength (min.)	20 lbs.
MECHANICAL — CABLE (STRANDED)	
Wire Size Range (Nominal)	26 AWG 7x32 Stranded tinned copper
Cable Construction	S/FTP
Cable O.D. (nominal)	6.35mm (0.25 in.)
Wiring	T568A/B
Jacket Type	CM/LSOH
Bend Radius	50mm (2.0 in.)

Ordering Information

Shielded Category 6A BladePatch LSOH, double-ended, RJ-45 modular patch cord with push-pull latching design, color matching cord/boot, T568A/B.

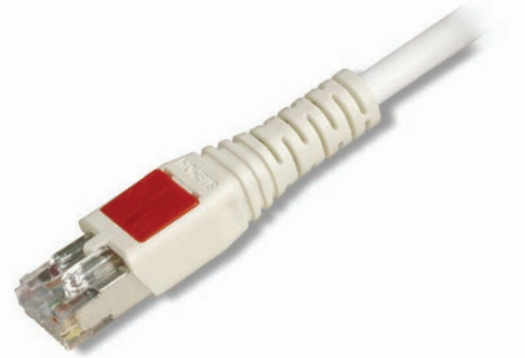
10GBPS-(XX)M-(XX)L

Cord Length

01 = 1m (3.3 ft.)
1.5 = 1.5m (5 ft.)
02 = 2m (6.6 ft.)
03 = 3m (9.8 ft.)
04 = 4m (13.1 ft.)
05 = 5m (16.5 ft.)

Cord Color

01 = Black
02 = White
03 = Red
04 = Gray
05 = Yellow
06 = Blue
07 = Green



The use of Category 6A shielded BladePatch modular cords will provide Category 6A channel performance if used in a Z-MAX 6A system.

Z-MAX 6A warranty margins do not apply.

Because we continuously improve our products, Siemon reserves the right to change specifications and availability without prior notice.

**Worldwide Headquarters
North America**
Watertown, CT USA
Phone (1) 860 945 4200

**Regional Headquarters
Europe Russia Africa**
Chertsy, Surrey, England
Phone (44) 0 1932 571771

**Regional Headquarters
China**
Shanghai, P.R. China
Phone (86) 215385 0303

**Regional Headquarters
Latin America**
Bogota, Colombia
Phone (571) 657 1950/51/52

**Regional Headquarters
India Middle East**
Dubai, United Arab Emirates
Phone (971) 4 3689743

**Regional Headquarters
Asia Pacific**
Sydney, Australia
Phone (61) 2 8977 7500

**Siemon Interconnect Solutions
Watertown, CT USA**
Phone (1) 860 945 4213 US
www.siemon.com/SIS