

Z-MAX™ 6A UTP OUTLETS

Combining exceptional category 6A performance with best-in-class termination time, the Z-MAX 6A shielded outlet is a vital part of an end-to-end Z-MAX 6A UTP cabling system. The Z-MAX module exceeds all applicable industry standards, including TIS-568-B.2-10 and ISO/IEC 11801:2002 Amendment 1, Class EA

This exceptional performance is achieved through Z-MAX's innovative Z-TOOL termination process, Zero-Cross termination module, unique diagonal IDC alignment for AXT control and advanced tuning capabilities in conjunction with the patent-pending PCB-based smart plug technology integrated into Z-MAX patch cords.



PATENT PENDING



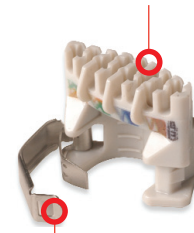
Z-MAX™

WORK AREA

STANDARDS COMPLIANCE

- TIA-568-B.2-10
- ISO/IEC 11801:2002 Amendment 1 (class EA)
- IEEE 802.3an
- IEEE 802.3af (PoE)
- IEEE 802.3at (PoE+)
- IEC 60603-7
- TIA-968-A (formerly FCC Part 68 Subpart F)

Zero-cross termination module accelerates lacing and eliminates pair crossing

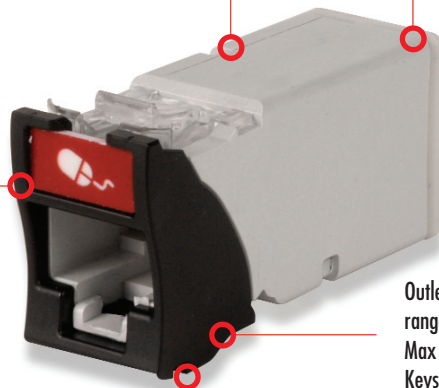


Rapid connection of cable jacket strain relief via integrated hinged metal clip

Robust glass-reinforced nylon housing provides durability

Terminates in as little as 60 seconds using the Z-Tool

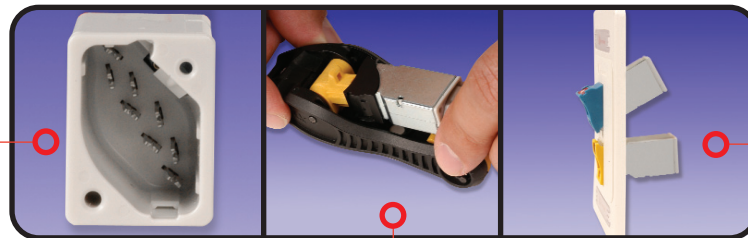
High visibility colored icons for port identification are provided in a convenient, one-piece frame



Outlets are available in a wide range of colors and mount in Max faceplates and accessories. Keystone version also available

Pass-thru feature allows mounting from either side of a faceplate

Diagonal IDC alignment maximizes outlet to outlet pair separation to ensure AXT performance in high density environments



Universal design allows the same outlet to be mounted in flat or angled orientation

The ergonomic and easy-to-use Z-Tool ensures a simple low-force termination

CONNECTING THE WORLD TO A HIGHER STANDARD

WWW.SIEMON.COM



PRODUCT INFORMATION

Performance Specifications:

ELECTRICAL	
Contact Resistance	20 mΩ
Input to Output Resistance	200 mΩ
Min. Dielectric Withstand Voltage (contact to contact)	1000 V DC or AC peak
Min. Dielectric Withstand Voltage	1500 V DC or AC peak
Insulation Resistance	500 MΩ
Compatibility	Backwards to cat 5e and cat 6
Current Rating	1.5 A PoE , PoE +
POE	Suitable for PoE and PoE+
MECHANICAL – GENERAL	
Operating Temperature	-10 to 60 °C (14 to 140 °F)
Flammability Rating	UL 94 V-0
Green Features	RoHS, lead-free, halogen-free, PVC free
Housing Material	Glass-reinforced nylon
Contact Materials	Plated phospher bronze, stainless steel
Plastic Materials	Flame retardant themoplastic
Dimensions (LxWxH)	41.2x14.5x21.2mm (1.6x.570x.832 in.)

MECHANICAL – JACK	
Number of Plug Insertion Cycles	2500
Min. Contact Force	50g
Min. Plug Retention Force	50N
Plug Compatibility	Compatible with RJ45 (8-position) or RJ11 (6-position) plugs

MECHANICAL – TERMINATION	
Wire Size Range (nominal)	23-26 AWG solid and stranded
Wire Insulation Diameter Range (max)	1.48mm (0.058)
Conductor OD Size (max)	0.60mm (0.023)
Cable OD (max)	9mm (0.354)
Reterminations	5
Wiring	T568A/B

Z-MAX™ UTP Outlets:

Z6A-(XX).....Z-MAX 6A UTP module, hybrid (flat/angled)
 Z6A-K(XX).....Z-MAX 6A UTP module, keystone



Z6A



Z6A-K

Because we continuously improve our products, Siemon reserves the right to change specifications and availability without prior notice.

Z-MAX™, TERA® and MAX® are trademarks of Siemon

Use (XX) to specify color:

01 = black, 02 = white, 03 = red, 04 = gray, 05 = yellow,
 06 = blue, 07 = green, 09 = orange, 20 = ivory,
 25 = bright white, 80 = light ivory, 82 = alpine white

The hybrid outlet mounts into MAX® mounting hardware. It includes an icon card consisting of four attached icons: one color-matching, one red, one blue, and one blank icon.

The keystone version is designed for integration with various international mounting products and is not compatible with MAX mounting hardware. The icon is not compatible with keystone outlets.

For additional resource information:

Visit our web site at www.siemon.com

The Americas

Watertown, CT USA
 Phone (1) 860 945 4200 US
 Phone (1) 888 425 6165 Canada

Europe/Middle East/Africa

Surrey, England
 Phone (44) 0 1932 571771

Asia/Pacific

Shanghai, P.R. China
 Phone (86) 21 6390 6778

Central & South America

Bogota, Colombia
 Phone (571) 317 2121