

MX-SM[®] SURFACE MOUNT BOXES

Siemon is proud to introduce its line of surface mount boxes, newly redesigned with our customer's needs in mind. Siemon surface mount boxes allow all standard MAX[®] modules and SC and LC fiber adapters to be used in surface mount applications. The compact and easily installed design offers multiple cable management features and supports UTP, Screened, coax and TERA[®] cabling styles, as well as fiber. Available in 1, 2, 4 and 6 port configurations, these products feature 10G optimized jack spacing for superior next performance.



PATENTED

WORK AREA

Breakouts on three sides and bottom for cable/raceway entry

Label cover conceals screw for added security if desired

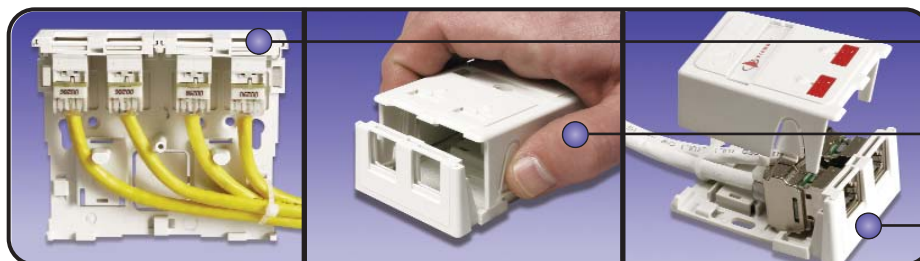
Snap-on cover with designation areas for color-coded icons/tabs and write-on labels

Built-in cable management posts ensure proper bend radius for copper or fiber

Cable tie anchor points facilitate strain relief for cable

MAX bezels (included), allow flat MAX modules to be snapped in place

Optional spring-loaded shutter doors offer added protection from dust and other contaminants



Depth of box is optimized to maintain proper bend radius of cables

Left and right thumb release allow the cover to be easily removed

Compatible with all media types including UTP, Screened, coax, fiber and TERA

ORDERING INFORMATION

WORK AREA

MX-SM® Surface Mount Boxes:

Field-assembled surface mount boxes with MAX® bezels. Accepts flat MAX modules (ordered separately).



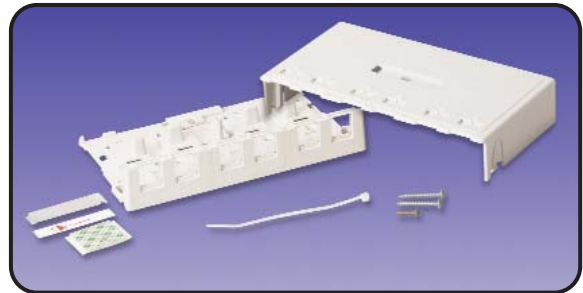
MX-SM1-XX1-port box with cover, base, one single port MAX bezel, cable ties, and screws



MX-SM2-XX2-port box with cover, base, one (2-port) MAX bezel, cable ties, screws, and designation labels



MX-SM4-XX4-port box with cover, base, two (2-port) MAX bezels, cable ties, screws, and designation labels



MX-SM6-XX6-port box with cover, base, three (2-port) MAX bezels, cable ties, screws, and designation labels

Use (XX) to specify color: 01 = black, 02 = white, 20 = ivory, 80 = light ivory.

Add "-D" for optional spring shutter doors.

Add "-M" for optional magnets.

Add "-MD" for optional doors and magnets.

MAX® bezels are compatible with all single port, flat MAX modules.

For LC, SC duplex fiber adapters and TERA® options, see MX-SM multimedia bezels below.



MX-SMB-MM-XX
Multimedia 2-port bezel



MX-SMB-SC-XX
Bezel with duplex multimode/singlemode SC adapter



MX-SM-BLNK-XX
A single blank insert for an unused port. May be used with MAX or multimedia bezels

Use (XX) to specify color: 01 = black, 02 = white, 20 = ivory, 80 = light ivory.

Note: Multimedia bezels accommodate TERA outlets and flat MAX simplex LC adapters. They are also compatible with all other single port flat MAX modules, but require the use of icons to secure modules into bezel.

Because we are continuously improving our products, Siemon reserves the right to change specifications and availability without prior notice.

SM®, MAX® and TERA® are trademarks of Siemon

For related product information request Spec Sheet(s):

10G 6 MAX Modules (PROD-SS-MX10G6)

MAX 6 Modules (PROD-SS-MX6)

MAX 5e Modules (PROD-SS-MPD)

The Americas
Watertown, CT USA
Phone (1) 860 945 4200

Europe/Middle East/Africa
Surrey, England
Phone (44) 0 1932 571771

Asia/Pacific
Shanghai, P.R. China
Phone (86) 21 6390 6778

WWW.SIEMON.COM

ISO 9001
CERTIFIED

ISO 14001
CERTIFIED

