

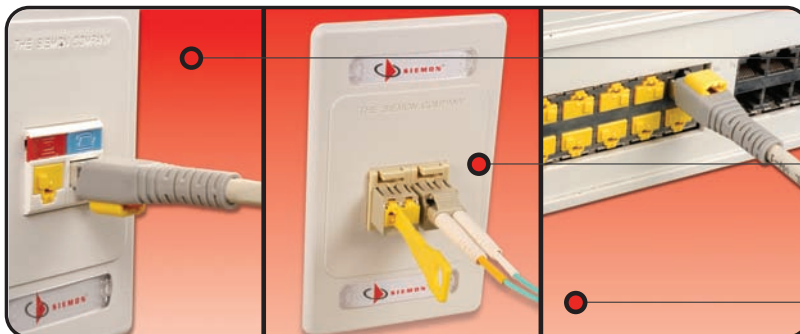
LockIT™ Secure Connectivity System

The LockIT solution is comprised of two primary elements: the RJ45 Outlet/LC adapter Lock and the Secure Patch Cord. The Lock protects a RJ45 copper outlet or fiber adapter from the insertion of cords or foreign objects. The Secure RJ45 Patch Cord deters unintended or unauthorized disconnection of the cord. Each of these components requires the LockIT universal key for removal, but may be freely inserted into an outlet to secure the connection. All LockIT components are brightly colored in yellow to easily identify secured connectivity.

The LockIT products are compatible with any standards compliant RJ45 outlet, or LC fiber port. This versatile system can be used in a variety of applications. This flexibility makes LockIT a perfect choice for use in public areas such as schools, retail stores, and waiting areas. LockIT is also an ideal solution to protect mission-critical networks such as data centers, health care environments and government systems.



SECURE CONNECTIVITY



LockIT can protect copper and fiber work area outlets in public areas from tampering or unwanted access

Patch panel and fiber ports may be protected in the work area, wiring closets and data centers

LockIT is ideal to secure active equipment ports against unintended or unauthorized connections or disconnections

CONNECTING THE WORLD TO A HIGHER STANDARD

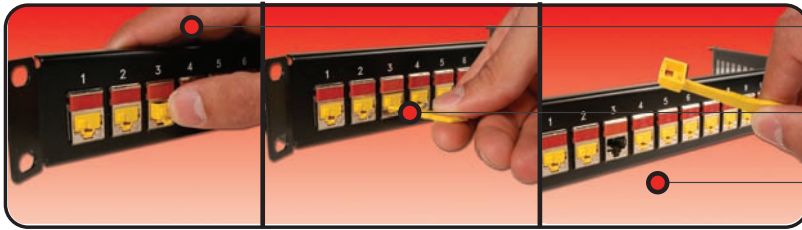
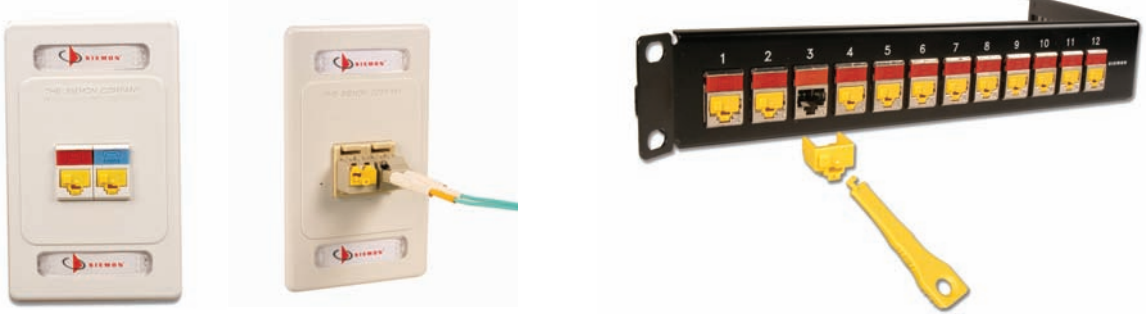
WWW.SIEMON.COM



Product Information

Outlet Lock/LC Adapter Lock

The LockIT™ Outlet Lock fits securely into any standards compliant RJ45 outlet or LC Fiber adapter to block access to the port. It locks flush within the outlet or adapter opening to provide a clean, attractive appearance without obstructing adjacent ports or protruding beyond the outlet face. The outlet or adapter lock may be safely removed only by using the LockIT universal key.



The outlet/adapter lock simply snaps into empty ports with no key required

Insert the universal key into the outlet/adapter lock and rotate to unlock

The lock may now be removed and is retained by the key to avoid dropping

Secure Patchcord

The LockIT Secure Patch Cord features a low-profile boot with an integrated lock. That prevents disconnection. The cord can only be removed with the use of the LockIT universal key. The unique plug and boot design incorporates a push-pull action which is based on Siemon's BladePatch® technology. This design provides excellent accessibility in high density environments. The LockIT Secure Patch Cord is offered in Category 6A™ F/UTP, UTP, and category 6 UTP versions and is fully supported by applicable Siemon System Warranties.



The secure patch cord is easily connected to an available outlet — no need for a key or tool

Insert the key into the lock from the rear to unlock the plug

Pull back on the boot to remove the patch cord from the outlet

Product Information

APPLICATIONS

The LockIT™ system is a cost-effective way to control physical access to a network. It is easily implemented and highly manageable, making it suitable for a wide range of applications and vertical markets. LockIT is ideal for securing connections in public areas and shared spaces. It also reduces the risk of severing critical connections in data centers, financial services, health care, and other mission critical networks.



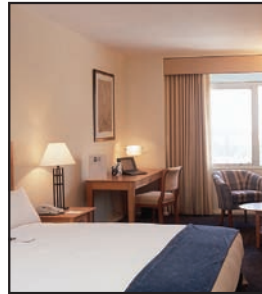
Retail

- Prevent tampering in sales floor outlets
- Eliminate accidental disconnection of sales terminals



Transportation

- Protect public terminal connectivity from unauthorized access
- Secure ticketing terminals and self-service kiosk connections



Entertainment/Hospitality

- Block access to public area and guest room outlets
- Deter patch cord theft in guest rooms



Education

- Prevent port damage due to insertion of foreign objects or other vandalism
- Secure classroom computer links and deter cord theft



Data Center

- Reserve/lock out unused ports for future use
- Flag inactive ports
- Prevent accidental disconnection in critical patching fields



Finance

- Add additional layer of security by deterring unauthorized physical connections
- Lock out unused ports
- Lock in-use ports with secure patch cord connections to both outlet and equipment



Health Care

- Inhibit unauthorized guest and patient access to in-room data outlets
- Secure equipment connections in nurse stations, patient reception areas and examination rooms



Government

- Identify and protect high security network ports
- Deter critical data breaches by discouraging equipment removal

Ordering Information

Universal Key

The LockIT™ Universal Key is used to unlock all LockIT components. The extended length provides the ability to easily unlock the LockIT Outlet or Secure Patch Cord in high density applications. The key is included with the system, and is also available for purchase separately.



LockIT LC Adapter Lock:

LL-LC-05LockIT LC Adapter Lock, bag of 10, includes 1 LockIT Universal Key

LockIT RJ45 Outlet Lock:

LL-05LockIT RJ45 Outlet Lock, bag of 10, includes 1 LockIT Universal Key

LockIT Universal Key*:

LKEY-05LockIT Universal Key, bag of 10

LockIT Secure Patchcords:

Category 6A F/UTP

LP6A-S(XX)M-(XX)LShielded Category 6A, double-ended, 4-pair, stranded LockIT secure patch cord, T568A/B, color matching jacket/boot, LSOH

LM6A-S(XX)M-(XX)LShielded Category 6A LockIT to MC6A Plug, 4-pair, stranded LockIT secure patch cord, T568/B, color matching jacket/boot, LSOH

LB6A-S(XX)M-(XX)LShielded Category 6A LockIT to Bladepatch, 4-pair, stranded LockIT secure patch cord, T568A/B, color matching/jacket/boot, LSOH

Use 1st (XX) to specify length:

01 = 1m (3.3 ft.), 1.5 = 1.5m (4.9 ft.), 02 = 2m (6.6 ft.), 03 = 3m (9.8 ft.), 05 = 5m (16.4 ft.)

Use 2nd (XX) to specify jacket/boot color:

01=black, 02=white, 03=red, 04=gray, 05=yellow, 06=blue, 07=green, 09=orange

Category 6A UTP

LP6A-(XX)-(XX)UTP 10G 6A, double-ended, 4-pair, stranded LockIT secure patch cord, T568A/B, color matching jacket/boot, CMG

LM6A-(XX)-(XX)UTP 10G 6A, LockIT to MC6A Plug, 4-pair, stranded LockIT secure patch cord, T568A/B, color matching jacket/boot, CMG

LB6A-(XX)-(XX)UTP 10G 6A, LockIT to Bladepatch, 4-pair, stranded LockIT secure patch cord, T568A/B, color matching jacket/boot, CMG

Use 1st (XX) to specify cord length:

03 = 0.9m (3 ft.), 05 = 1.5m (5 ft.), 07 = 2.1m (7 ft.), 10 = 3.1m (10 ft.), 15 = 4.6m (15 ft.), 20 = 6.1m (20 ft.)

Use 2nd (XX) to specify jacket/boot color:

01 = black, 02 = white, 03 = red, 04 = gray, 05 = yellow, 06 = blue, 07 = green, 09=orange

Category 6

LP6-(XX)-(XX)Category 6, double-ended, 4-pair, stranded LockIT secure patch cord, T568A/B, color matching jacket/boot, CMG

LM6-(XX)-(XX)Category 6, LockIT to MC6 Plug, 4-pair, stranded LockIT secure patch cord, T568A/B, color matching jacket/boot, CMG

LB6-(XX)-(XX)Category 6, LockIT to Bladepatch, 4-pair, stranded LockIT secure patch cord, T568A/B, color matching jacket/boot, CMG

Use 1st (XX) to specify cord length:

03 = 0.9m (3 ft.), 05 = 1.5m (5 ft.), 07 = 2.1m (7 ft.), 10 = 3.1m (10 ft.), 15 = 4.6m (15 ft.), 20 = 6.1m (20 ft.)

Use 2nd (XX) to specify jacket/boot color:

01 = black, 02 = white, 03 = red, 04 = gray, 05 = yellow, 06 = blue, 07=green, 09=orange

The Americas

Watertown, CT USA
Phone (1) 860 945 4200 US
Phone (1) 888 425 6165 Canada

Europe/Middle East/Africa

Chertsey, England
Phone (44) 0 1932 571771

Asia/Pacific

Shanghai, P.R. China
Phone (86) 21 6390 6778

Central & South America

Bogota, Columbia
Phone (571) 317 2121

WWW.SIEMON.COM

ISO 9001
CERTIFIED

ISO 14001
CERTIFIED

