

10G 6A™ UTP MAX® MODULES

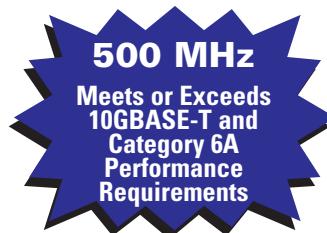
Part of Siemon's 10G 6A UTP end-to-end Cabling Solution, 10G 6A UTP MAX modules meet or exceed all TIA-568-B.2-10 category 6A performance requirements for support of the pending 10GBASE-T application standard. This superior level of performance is achieved via an enhanced circuit board design, optimization of jack pin geometry, and stringent inspection and quality control procedures.

Combine the 10G 6A MAX jack with Siemon's 10G 6A UTP MC® patch cords, BladePatch®, patch panels and cable for a complete 10Gb/s channel solution. This cabling system delivers unparalleled network performance today and support for future multi-gigabit Ethernet applications.



10G ip™

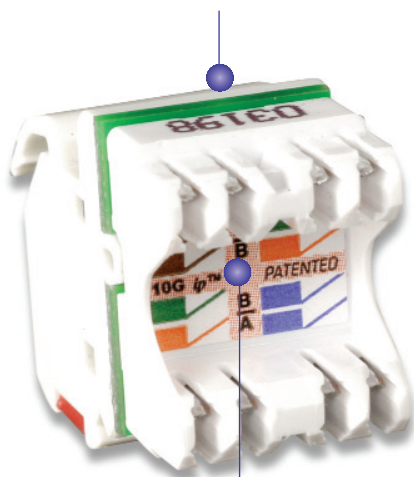
PATENTED



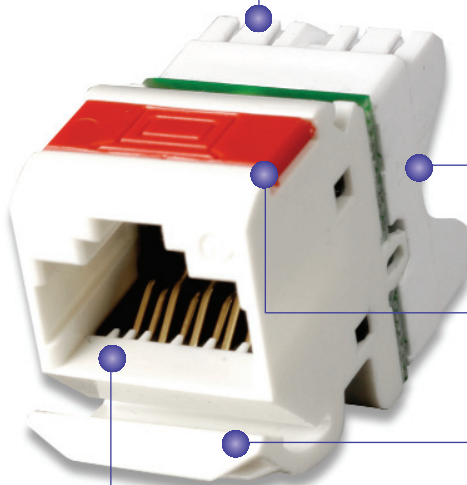
WORK AREA

Install from either front or rear of faceplate or patch panel

Use with 10G MAX faceplates and 10G 6A UTP patch panels to meet alien crosstalk requirements



T568A and T568B wiring compatible

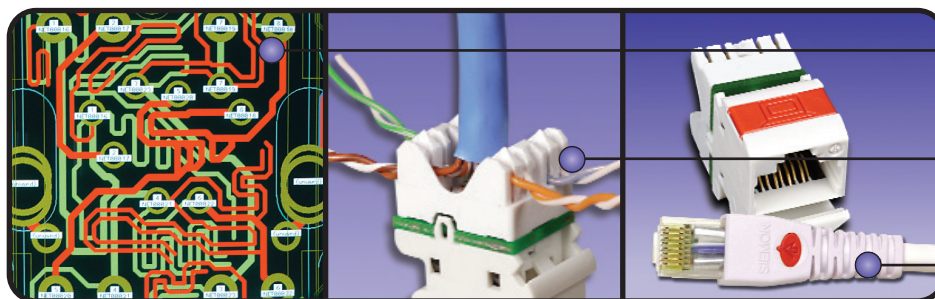


Terminates with standard 110 termination tools

Icons provided for port identification

Protective doors (not shown) minimize exposure to dust and other contaminants

Backward compatible with category 6/class E and lower patch cords



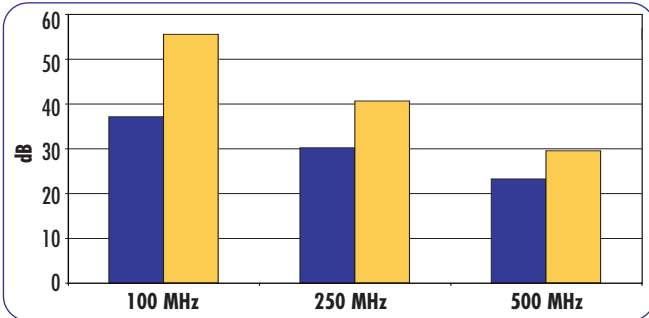
Circuit board is tuned and balanced using our patent-pending Phase-Delay™ technology to maximize performance to 500 MHz

Pyramid wire entry system on S310® blocks separates paired conductors when lacing cables to simplify and reduce installation time

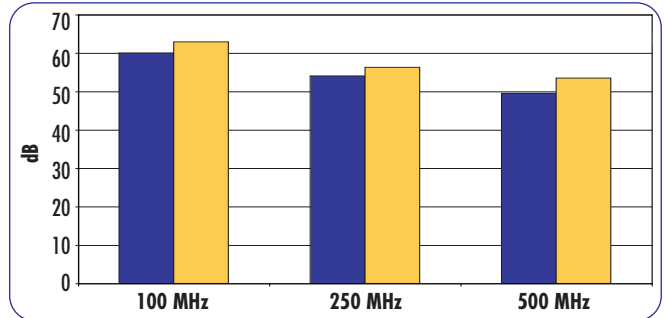
For superior performance, use 10G 6A MC and 10G 6A BladePatch modular cords

Channel Performance Data for 10G 6A™ UTP Solution*

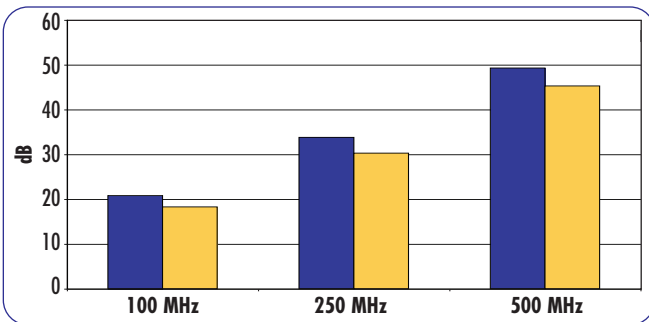
PS NEXT



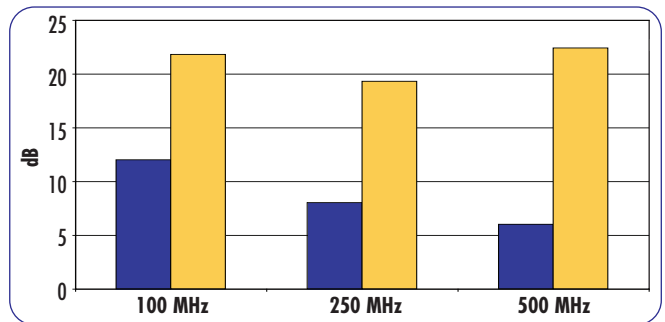
PS ANEXT Loss



Insertion Loss



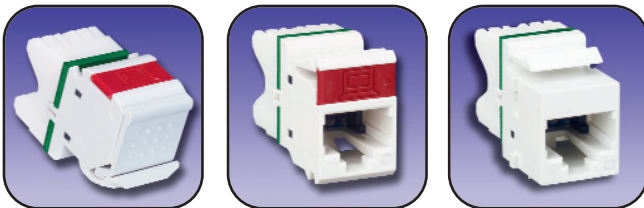
Return Loss



■ Cat 6A Limit ■ Typical

10G 6A™ UTP MAX Modules:

- 10GMX-XX).....Angled module with T568A/B wiring, rear strain relief cap and protective rubber door
- 10GMX-F(XX).....Flat module with T568A/B wiring and rear strain relief cap
- 10GMX-K(XX).....Keystone module with T568A/B wiring and rear strain relief cap



10GMX

10GMX-F

10GMX-K

Because we continuously improve our products, Siemon reserves the right to change specifications and availability without prior notice.

10G 6A™, 10G ip™, MC®, BladePatch®, MAX®, TERA®, Pyramid™, S210® and S310® are trademarks of Siemon

The Americas
Watertown, CT USA
Phone (1) 860 945 4200

Europe/Middle East/Africa
Surrey, England
Phone (44) 0 1932 571771

Asia/Pacific
Shanghai, P.R. China
Phone (86) 21 6390 6778

Japan
Tokyo, Japan
Phone (03) 5405 7650

*4 Connector Channel Performance Data utilizes 10G 6A MAX® UTP Modules, 10G 6A MC® UTP Modular Cords or 10G 6A BladePatch® UTP Patch Cord, 10G 6A MAX Panel, S210® Connecting Blocks and 10G 6A UTP Cable

Use (XX) to specify color:

01 = black, 02 = white, 03 = red, 04 = gray, 05 = yellow, 06 = blue, 07 = green, 09 = orange, 20 = ivory, 25 = bright white, 80 = light ivory, 82 = alpine white

Add "-D" for color-matching door for flat version

ⓑ Add "B" to end of part number for bulk project pack of 100 modules
Angled and flat modules include one color-matching, one red, and one blue icon

Door color is clear for angled red, yellow, blue and orange modules, white for flat

Note: Keystone version is designed for integration with various international mounting products and is not compatible with MAX mounting hardware

For additional resource information:

Visit our web site at www.siemon.com

For related product information request Spec Sheet(s):

- 10G 6A MAX Panels (PROD-SS-10GPP)
- 10G 6A UTP MC Patch Cords (PROD-SS-MC10G6AUTP)
- 10G 6A UTP BladePatch (PROD-SS-10G6ABDPUTP)
- MAX Modular Faceplates (PROD-SS-MXF)
- 10G 6A UTP Cable (PROD-SS-10G6ACBLUS)