

V600 Cabinet

The V600 cabinet provides a robust, cost-effective enclosure solution that is ideal for use in conjunction with VersaPOD data center cabinets. While not compatible with VersaPOD's Zero-U vertical patching and cable management products, it shares a common appearance for standard cabinet applications.

Lightweight Stability — Design provides an extremely stable, high-capacity cabinet without excessive weight

Enhanced Side Access — Split level side panels provide convenient access to installed equipment

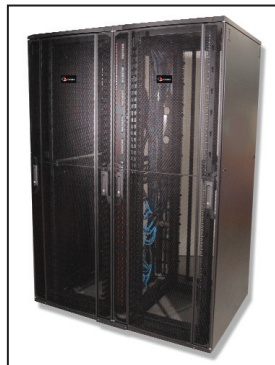


High-Flow Doors — Contoured high density perforated door provides 71% perforation exceeding major IT equipment air flow requirements

Full Accessibility Doors — Quick release, field reversible single piece front and split rear doors



Flexible Mounting Options — Depth adjustable 19 in vertical mounting rails in 5mm (0.2 in) increments



Shares common appearance with VersaPOD for improved aesthetics in data centers using both V600 and VersaPOD cabinets.

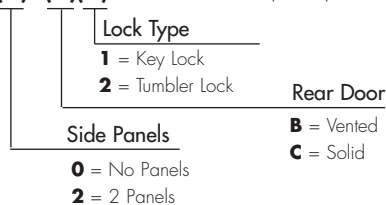


Compatible with VersaPOD thermal management options including exhaust fans and brush guards. 1200mm version compatible with VersaPOD Vertical Exhaust Ducts (chimneys)

ORDERING INFORMATION

V600mm Cabinet

V1-(X)A(X)(X)11 . . . 1000mm (40 in) X 600mm (24 in) V600 Cabinet, 45U, Black
V2-(X)A(X)(X)11 . . . 1200mm (48 in) X 600mm (24 in) V600 Cabinet, 45U, Black



Includes 4 leveling feet, 50 cage nuts and 2 stabilizing brackets



V600 Cabinet Specifications

U Space	45
Packaging	Ships assembled on a pallet
Standard Compliance	CEA-310-E, UL 60950, IEC-60297-2, RoHS
Load Rating	907 kgs (2000 lbs) Static load, evenly distributed
Material	Premium grade hot and cold rolled steel
Base Type	Open
Color	Black
Standard Front Door	Full, hinged, perforated, keyed lock
Standard Rear Doors	Split, hinged, perforated, keyed lock
% Door Perforation	71%
Removable Doors	Yes
Lockable/Removable Side Panels/Horizontal Split	Yes
Adjustable Mounting Rails	Yes
U Space Identification on Rails	Yes
Adjustable Leveling Feet	Yes, included with cabinet
Stabilizing Brackets	Yes, included with cabinet, used to secure cabinet to shipping pallet
Top Cable Access Openings (V1)	4 small, 1 large
Top Cable Access Openings (V2)	3 small, 3 large

Dimensions	inches	mm	
Height	84	2133	Nominal Height with adjustable leveling feet or castors
Width	24	600	
Depth (V1)	40	1000	
Depth (V2)	48	1200	
Height on Pallet	89	2261	As delivered on wooden pallet
Product Weight	lbs	kgs	
Cabinet Weight (V1)	275	125	
Cabinet Weight (V2)	305	138	
Cabinet Weight w/packing (V1)	300	136	Includes wooden pallet and packaging
Cabinet Weight w/packing (V2)	330	150	Includes wooden pallet and packaging

V600 Cabinet Accessories

- V1-VP1-BAY**V1 to VP1 Baying Kit
- V2-VP2-BAY**V2 to VP2 Baying Kit
- VP-FAN**Top-Mount Cooling Fan Panel, 3 fans, 15A/125V, NEMA 5-15 Plug
- VP-FAN-EU1**Top-Mount Cooling Fan Panel, 3 fans, 13A/230-240V, B51363 Plug
- VP-FAN-EU2**Top-Mount Cooling Fan Panel, 3 fans, 16A/250, CEE 7/7 Plug
- VP-T3**127mm x 444mm (5 in x 17.5 in) Brush Guard
- VP-BRUSH**41.3m x 279mm (1.625 in. x 11 in) Brush Guard
- V-W**V600 Castor Wheels, set of 4

Because we continuously improve our products, Siemon reserves the right to change specifications and availability without prior notice.

VersaPOD™ is a trademark of Siemon

The Americas
 Watertown, CT USA
 Phone (1) 860 945 4200 US
 Phone (1) 888 425 6165 Canada

Asia/Pacific
 Shanghai, P.R. China
 Phone (86) 21 6390 6778

Europe/Middle East/Africa
 Surrey, England
 Phone (44) 0 1932 571771

Central & South America
 Bogota, Columbia
 Phone (571) 317 2121