

10G 6A™ UTP TRUNKING CABLE ASSEMBLIES

Siemon's category 6A UTP trunking cable assemblies provide an easily installed and cost effective alternative to individual field-terminated channels. Combining factory terminated and tested 10G 6A UTP MAX® modules with Siemon's 10G 6A UTP cable in a high-performance modular cable assembly, 10G 6A UTP trunking cable assemblies are designed to simplify the installation of 10 Gb/s systems in data centers and other high-density high-performance environments.



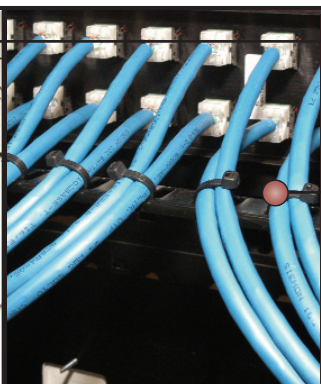
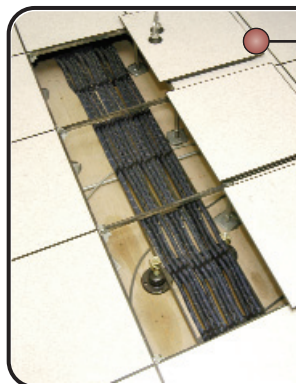
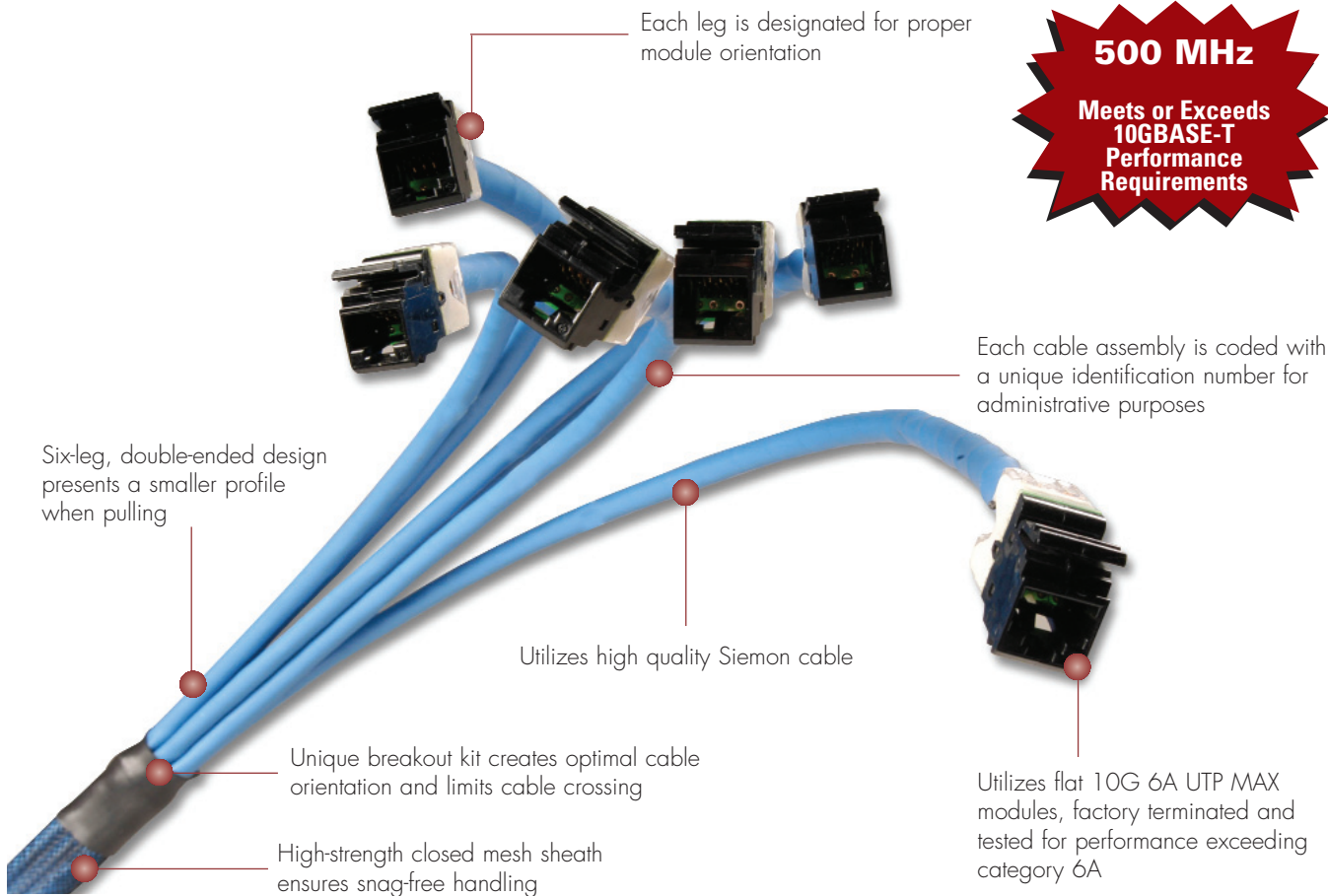
PATENTED

10G ip™

500 MHz

Meets or Exceeds
10GBASE-T
Performance
Requirements

TRUNKING PRODUCTS



Ideal for Data Center installations where raised floor and ladder rack environments accommodate easy installations

Typical installation utilizing Straight cut ensures each cable is terminated at the proper length

Each assembly is packaged individually to protect factory terminations

CONNECTING THE WORLD TO A HIGHER STANDARD

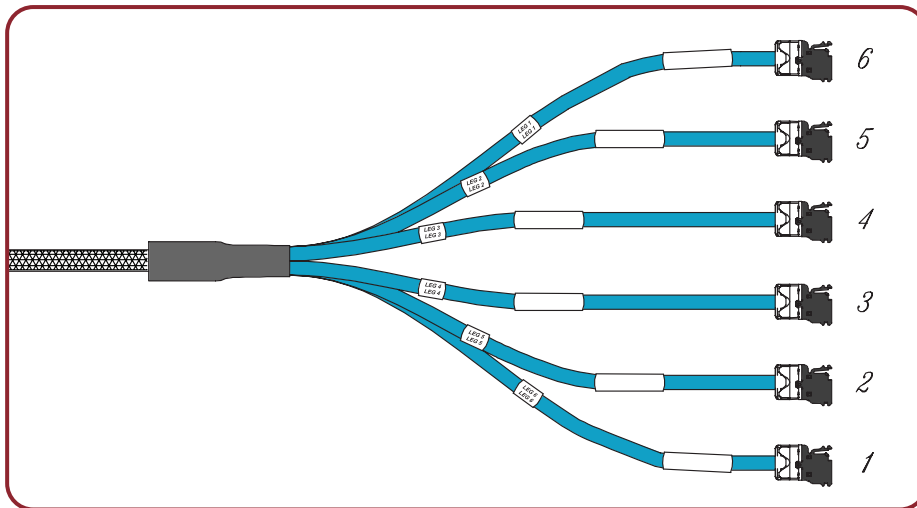
WWW.SIEMON.COM



10G 6A™ UTP Trunking Cable Assemblies:

Major Product Features:

- 6-leg, double ended construction
 - Presents a smaller profile when pulling
- Straight cut
 - Allows left, right or center exit
- Terminated with MAX outlets
- Unique closed mesh sheath
 - Ensures snag-free handling
 - Material properties match the cable jacket
- Robust breakout kit
 - Maintains cable orientation and prevents crossing
- Pre-attached pulling eye to aid installation



Six Leg Trunk Cable:

- TDRD6E-A1A1(XXX)(X) 10G 6A UTP, riser rated (CMR) cable, double ended flat black MAX® modules, blue jacket, 500MHz
 TDPD6E-A1A1(XXX)(X)..... 10G 6A UTP, plenum rated (CMP) cable, double ended flat black MAX modules, blue jacket, 500MHz
 TDLD8E-A1A1(XXX)(X) 10G 6A UTP, LSOH rated (IEC 60332-1) cable, double ended flat black MAX modules, violet jacket, 500MHz

Use (XXX) to specify length*:

009-295 ft. in increments of 3 feet

003-90m in increments of 1 meter

Use (X) unit: F = feet, M = meters,

Other lengths available upon request.

* Lengths below 24m (80 ft.) are coiled and packed in box. Longer lengths ship on reels.

Note: These products are made to order. Call for lead time and part number availability in your region.

Because we continuously improve our products, Siemon reserves the right to change specifications and availability without prior notice.

MAX®, 10Gip™ and 10G 6A™ are trademarks of Siemon

For related product information request Spec Sheet(s):

- 10G 6A MC® UTP Modular Cords (PROD-SS-MC10G6)
- 10G 6A BladePatch® UTP Modular Cords (PROD-SS-10G6ABDPUTP)
- 10G 6A MAX Patch Panel (PROD-SS-10G6AMXPP)

The Americas

Watertown, CT USA
 Phone (1) 860 945 4200

Europe/Middle East/Africa

Surrey, England
 Phone (44) 0 1932 571771

Asia/Pacific

Shanghai, P.R. China
 Phone (86) 21 6390 6778

Japan

Tokyo, Japan
 Phone (81) (3) 5437-1580