

10G 6A™ F/UTP TRUNKING CABLE ASSEMBLIES

Siemon's 10G 6A F/UTP copper trunking cable assemblies combine the 10 Gb/s performance and security of a screened category 6A solution with the ease and efficiency of a pre-terminated cable assembly. Featuring factory terminated and tested 10G 6A F/UTP MAX® modules and Siemon 10G 6A F/UTP cable, Siemon copper trunking cable assemblies were designed to enable rapid deployment of data centers. These provide an efficient and cost effective alternative to individual field-terminated components. In addition to providing simple, consistent and aesthetically pleasing cable management, the assemblies allow significantly reduced field installation times. Utilizing smaller diameter screened cable, 10G 6A F/UTP trunking assemblies also reclaim pathway space over larger diameter UTP designs.



PATENTED

10G ip™

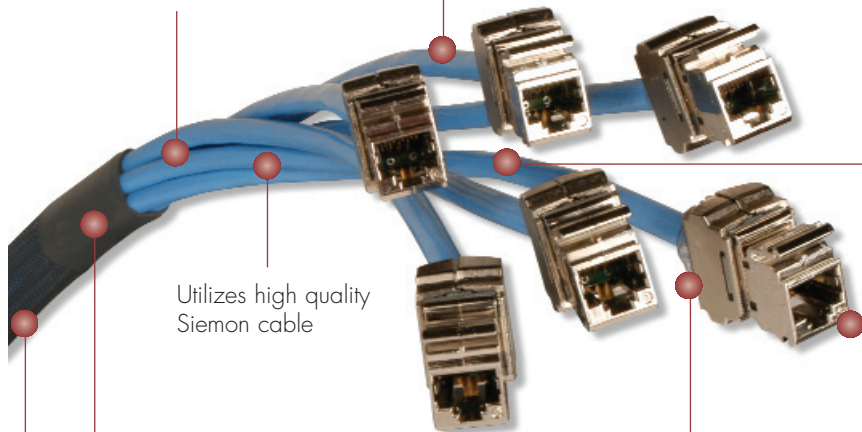
500 MHz

Meets or Exceeds
10GBASE-T
Performance
Requirements

TRUNKING PRODUCTS

Six-leg, double-ended design presents a smaller profile when pulling

Each leg is designated for proper module orientation



Each cable assembly is coded with a unique identification number for administrative purposes

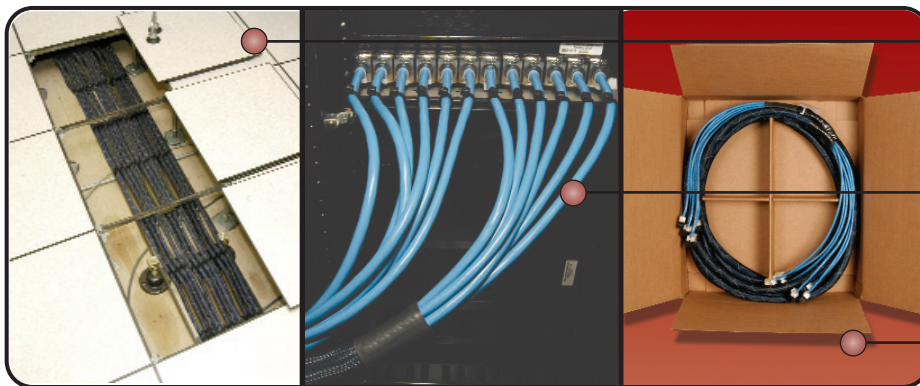
Utilizes high quality Siemon cable

Utilizes flat 10G 6A F/UTP MAX modules, factory terminated and tested for category 6 performance

Unique breakout kit creates optimal cable orientation and limits cable crossing

No additional grounding steps — 10G 6A F/UTP MAX modules are integrated to panel ground upon insertion into TERA®-MAX panels

High-strength closed mesh sheath ensures snag-free handling



Ideal for Data Center installations where raised floor and ladder rack environments accommodate easy installations

Simple installation — pre-terminated MAX modules snap easily into TERA-MAX panels

Each assembly is packaged individually to protect factory terminations

CONNECTING THE WORLD TO A HIGHER STANDARD

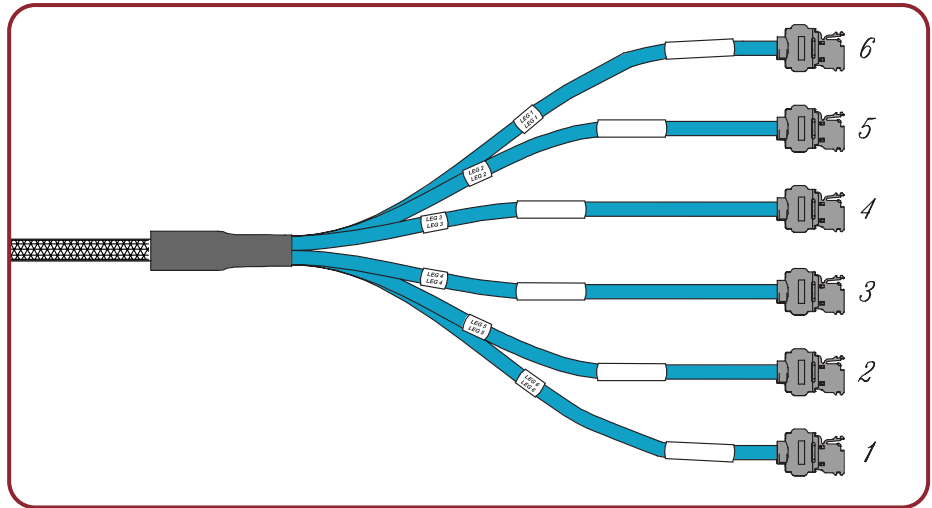
WWW.SIEMON.COM



10G 6A F/UTP Trunking Cable Assemblies:

Major Product Features:

- 6-leg, double ended construction
 - Presents a smaller profile when pulling
- Straight cut
 - Allows left, right or center exit
- Terminated with MAX outlets
- Unique closed mesh sheath
 - Ensures snag-free handling
 - Material properties match the cable jacket
- Robust breakout kit
 - Maintains cable orientation and prevents crossing
- Pre-attached pulling eye to aid installation



Six Leg Trunk Cable:

- TERD6E-A7A7(XXX)(X) 10G 6A F/UTP, riser rated (CMR) cable, double ended flat MAX® modules, blue jacket, 500MHz
- TEPD6E-A7A7(XXX)(X) 10G 6A F/UTP, plenum rated (CMP) cable, double ended flat MAX modules, blue jacket, 500MHz
- TELD8E-A7A7(XXX)(X) 10G 6A F/UTP, LSOH rated (IEC 60332-1) cable, double ended flat MAX modules, violet jacket, 500MHz

Use (XXX) to specify length*:

009-295 ft. in increments of 3 feet

003-90m in increments of 1 meter

Use (X) unit: F = feet, M = meters,

Other lengths available upon request.

* Lengths below 24m (80 ft.) are coiled and packed in box. Longer lengths ship on reels.

Note: These products are made to order. Call for lead time and part number availability in your region.

Because we continuously improve our products, Siemon reserves the right to change specifications and availability without prior notice.

MAX®, TERA®, MC®, BladePatch® and 10Gip™ are trademarks of Siemon

For related product information request Spec Sheet(s):

- 10G 6A MC® F/UTP Modular Cords (PROD-SS-10G6MCS)
- 10G 6A BladePatch® F/UTP Modular Cords (PROD-SS-10G6BDPS)
- TERA-MAX Patch Panel (PROD-SS-TRAPP)

The Americas

Watertown, CT USA
Phone (1) 860 945 4200

Europe/Middle East/Africa

Surrey, England
Phone (44) 0 1932 571771

Asia/Pacific

Shanghai, P.R. China
Phone (86) 21 6390 6778

Japan

Tokyo, Japan
Phone (81) (3) 5437-1580