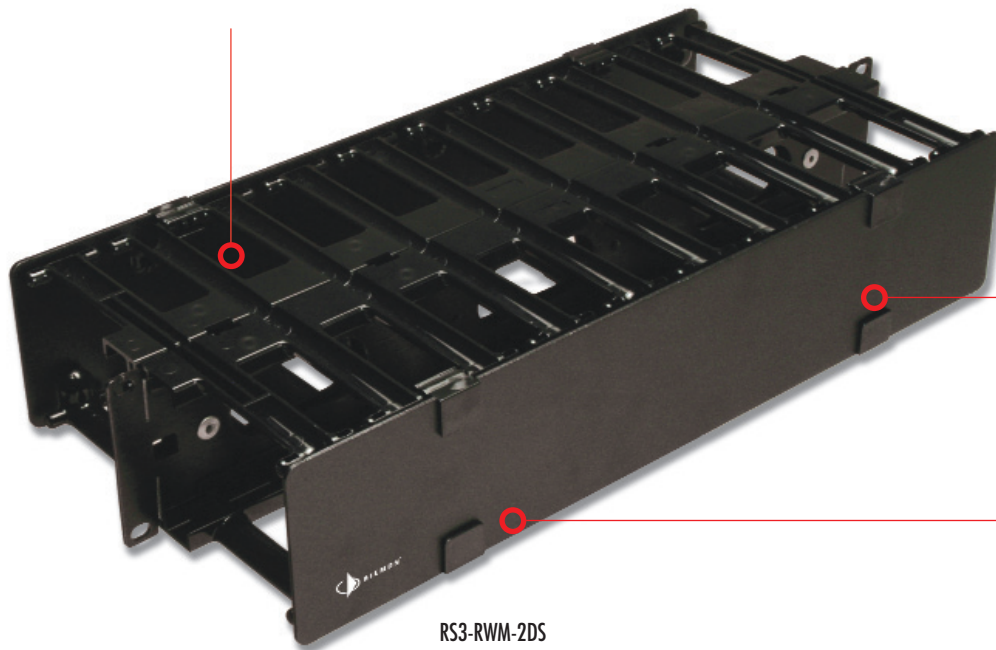


RS/RS3 Series Horizontal Cable Management

The RS/RS3 series horizontal cable managers are designed for use with Siemon's RS/RS3 series cable management racks and Siemon's VersaPod™. They feature the same hinged covered design as the vertical managers and offer line expansion covering 1U and 4U cable managers. The hinged front cover snaps easily over cable managers providing a concealed routing path into the vertical cable managers resulting in a clean patching environment.

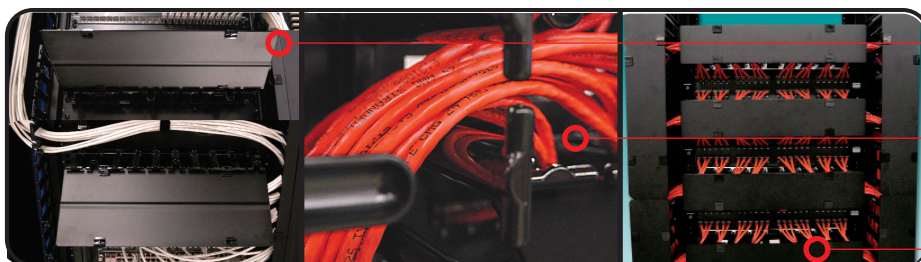
Double-sided versions available in 2U design for management on both front and rear of rack/cabinet



Front covers fully conceal all vertical patch cord routing through an easy to use, modular design.

Covers include positive securing snap latches for trouble-free fastening

RS3-RWM-2DS



Covers can be hinged in either direction to facilitate quick and easy changes.

The individual managers are rounded to allow patch cords to seamlessly enter and exit the managers without risk of cable deformation

Horizontal cable managers provide a fully integrated appearance for comprehensive management of patch cords

The following capacity table is provided for planning purposes. The values shown reflect a combination of actual and calculated capacity and represent a 100% fill. These values were derived using properly dressed cables and can be adversely affected by poor cable routing practices.

CABLE MANAGER CAPACITY TABLE

	Cable Diameter (in.)										
	0.15	0.17	0.19	0.21	0.23	0.25	0.27	0.29	0.31	0.33	0.35
RS(3)-RWM6-2	470	366	293	240	200	169	145	125	110	97	86
RS(3)-RWM6-4	1114	867	694	568	474	401	344	298	260	230	204
RS(3)-RWM1	140	108	87	71	59	50	43	37	32	28	25
RS(3)-RWM-4	895	697	558	457	381	322	276	239	209	185	185

ORDERING INFORMATION

RS3 SERIES HORIZONTAL CABLE MANAGERS

RS3 managers are compatible with RS3 cable management racks, VersaPOD 4-Post Racks, VersaPOD cabinets and V600 cabinets

PART NUMBER DESCRIPTION

- RS3-RWM-1Single Sided 19" Cable Manager, 1U
- RS3-RWM(X)-2Single Sided 19" Cable Manager, 2U
- RS3-RWM-2DSDouble Sided 19 in. Cable Manager, 2U
- RS3-RWM(X)-4Single Sided 19" Cable Manager, 4U

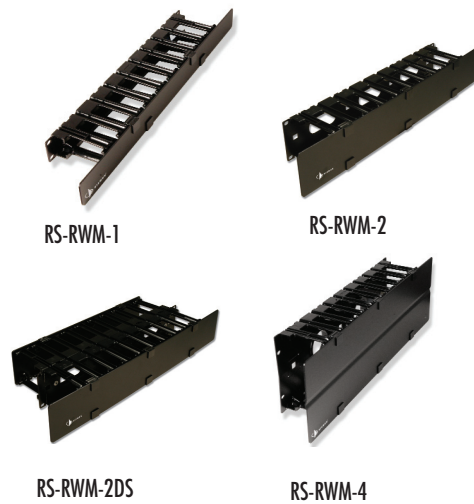


RS SERIES HORIZONTAL CABLE MANAGERS

Siemon's RS series cable managers are designed for use with Siemon's RS Series Cable Management racks and vertical patching channels (VPC's). The hinged cover extends to across the vertical channels to fully conceal patch cords into the VPC.

PART NUMBER DESCRIPTION

- RS-RWM-1Single Sided 19" Cable Manager, 1U
- RS-RWM(X)-2Single Sided 19" Cable Manager 2U
- RS-RWM-2DSDouble Sided 19" Cable Manager, 2U
- RS-RWM(X)-4Single Sided 19" Cable Manager, 4U



Use (X) to specify finger length:
 Blank = 4" (100mm) Fingers
 6 = 6" (152mm) Fingers*

*6" Fingers are not available with 1000mm (40w.) deep VersaPOD or V600 Cabinets

North America
 Watertown, CT USA
 Phone (1) 860 945 4200 US
 Phone (1) 888 425 6165 Canada

Europe/Middle East/Africa
 Surrey, England
 Phone (44) 0 1932 571771

Asia/Pacific
 Shanghai, P.R. China
 Phone (86) 21 5385 0303

Latin America
 Bogota, Colombia
 Phone (571) 657 1950