

Z-MAX™ 6A UTP MODULAR CORDS- US

The Z-MAX patch cord is a primary driver of the Z-MAX system's exceptional performance. The Z-MAX smart plug design features a tuned printed circuit board (PCB), normally found only in outlets, to achieve high performance tuning. The PCB also allows the incorporation of advanced contact technology to provide decreased variability and greater reliability over traditionally crimp-type plugs.

Combined with alien crosstalk resistant cable construction and a host of innovative, user-friendly features, the Z-MAX 6A UTP modular cords set the bar for category 6A UTP patching

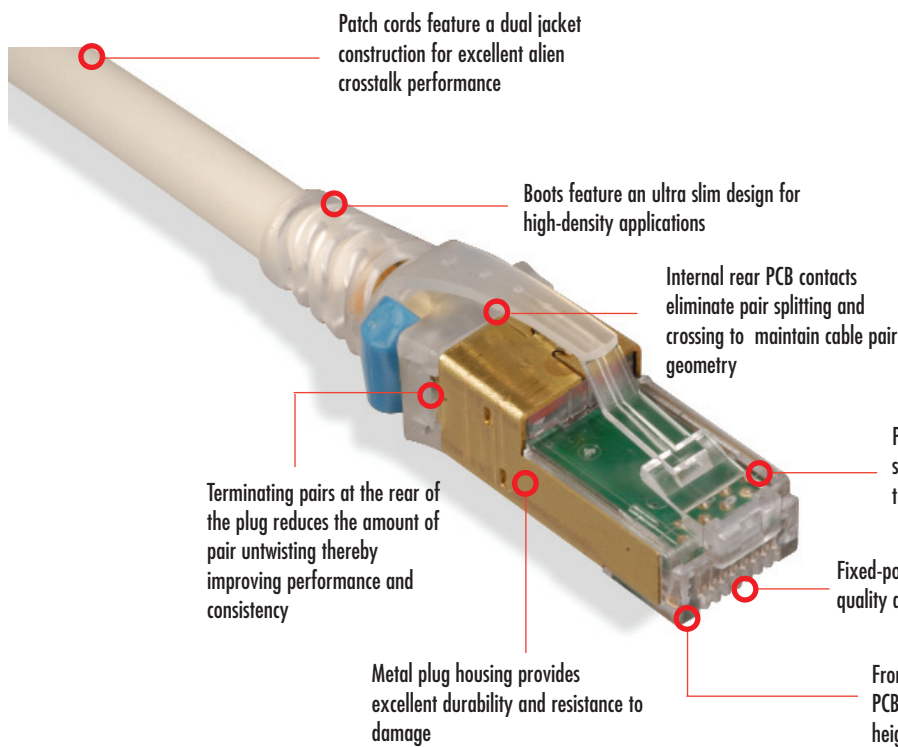


PATENT PENDING



Z-MAX™

PATCH CORDS, PLUGS & CABLE



Patch cords feature a dual jacket construction for excellent alien crosstalk performance

Boots feature an ultra slim design for high-density applications

Internal rear PCB contacts eliminate pair splitting and crossing to maintain cable pair geometry

Terminating pairs at the rear of the plug reduces the amount of pair untwisting thereby improving performance and consistency

Patent-pending PCB-based smart plug optimizes signal tuning for consistent, exceptional transmission performance

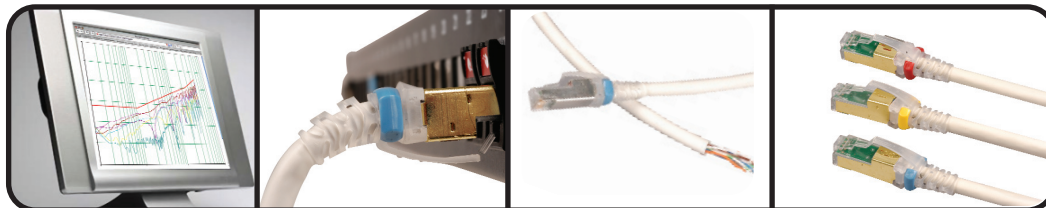
Fixed-position front contacts ensure plug quality and consistent mating with outlets

Metal plug housing provides excellent durability and resistance to damage

Front contacts are pre-terminated to PCB, eliminating variable contact heights due to crimping.

STANDARDS COMPLIANCE

- TIA-568-C.2
- ISO/IEC 11801:Amendment 2:2010
- IEEE 802.3an (10GBASE-T)
- IEEE 802.3af (PoE)
- IEEE 802.3at (PoE+)
- IEC 60603-7
- UL Listed 1863
- TIA-968-A (formerly FCC Part 68 Subpart F)



Cords are 100% transmission tested to ensure compliance with applicable standards requirements

Boot and integrated strain relief ensures proper bend relief, critical for category 6A performance

Solid Z-MAX 6A cords are available for consolidation point or cross-connect applications

Optional colored clips enable field color coding even when cords are connected

CONNECTING THE WORLD TO A HIGHER STANDARD

WWW.SIEMON.COM



PRODUCT INFORMATION

Performance Specification Chart:

ELECTRICAL	
Contact Resistance	10 mΩ
Input to Output Resistance	200 mΩ
Min. Dielectric Withstand Voltage (contact to contact)	1000 V DC or AC peak
Insulation Resistance	500 mΩ
Compatibility	Backwards to cat 5e and cat 6
Current Rating	1.5 A
PoE	Suitable for PoE and PoE+
Surface Transfer Impedance	< 10 mΩ/m @ 10 MHz
MECHANICAL – GENERAL	
Operating Temperature	-10 to 60 °C [14 to 140 °F]
Flammability Rating	UL 94 V-0
Green Features	RoHS, lead-free, halogen-free, PVC free
Plug Housing Material	Polycarbonate
Contact Materials	50 microinches gold plating or equivalent
Plastic Materials	Flame retardant thermoplastic
Screen	360 degree enclosure
Marking	P/N, length, performance level, QC
MECHANICAL – PLUG	
Number of Plug Insertion Cycles	2500
Min. Plug Retention Force	50N
Plug Compatibility	Compatible with RJ45 outlets
Cable to Plug Tensile Strength (min)	20 lbs

MECHANICAL – CABLE (STRANDED)	
Wire Size Range (nominal)	26 AWG 7x32 Stranded tinned copper
Cable Construction	UTP dual jacketed
Cable OD (nominal)	7.37mm (0.29 in.) outer, 6.43mm (0.25 in.) inner
Wiring	T568A/B
Jacket Type	CMG
Bend Radius	25mm (1.0 in.)

MECHANICAL – CABLE (SOLID)	
Wire Size Range (nominal)	23 AWG solid bare copper
Cable Construction	UTP
Cable OD (nominal)	7.87mm (0.31 in.) outer,
Wiring	T568A or T568B
Jacket Type	CMR or CMP
Bend Radius	31.55mm (1.2 in.)



Z-MAX™ 6A UTP Stranded Modular Cords:

ZM6A-(XX)-(XX).....Z-MAX 6A UTP double-ended, stranded modular cord colored jacket with clear boot, T568A/B, CMG

Use 1st (XX) to specify cord length:
03 = 0.9m (3 ft.), 05 = 1.5m (5 ft.), 07 = 2.1m (7 ft.),
10 = 3.1m (10 ft.), 15 = 4.6m (15 ft.), 20 = 6.1m (20 ft.)

Use 2nd (XX) to specify cable color:
01 = black, 02 = white, 03 = red, 04 = gray, 05 = yellow,
06 = blue, 07 = green, 09 = orange

ⓑ Add "B" for bulk project pack of 100 modular cords

Color Coding Clips:

CLIP-(XX)Color coding clip, bag of 25

Use (XX) to specify color: 01=black, 02=white, 03=red,
04=gray, 05=yellow, 06=blue, 07=green, 09 = orange



Because we continuously improve our products, Siemon reserves the right to change specifications and availability without prior notice.

Z-MAX™ is a trademark of Siemon

The Americas
Watertown, CT USA
Phone (1) 860 945 4200 US
Phone (1) 888 425 6165 Canada

Europe/Middle East/Africa
Surrey, England
Phone (44) 0 1932 571771

Z-MAX 6A UTP Solid Modular Cords:

ZC6A-(XX)A-RZ-MAX 6A UTP , single-ended solid modular cord, blue jacket with clear boot, T568B, CMR

ZC6A-(XX)T-RZ-MAX 6A UTP single-ended solid modular cord, blue jacket with clear boot, T568A, CMR

ZC6A-(XX)A-PZ-MAX 6A UTP single-ended solid modular cord, blue jacket with clear boot, T568B, CMP

ZC6A-(XX)T-PZ-MAX 6A UTP single-ended solid modular cord, blue jacket with clear boot, T568A, CMP

Use (XX) to specify cord length:

10 = 3.1m (10 ft.), 20 = 6.1m (20 ft.), 30 = 9.1m (30 ft.),
40 = 12.2m (40 ft.), 50 = 15.2m (50 ft.), 60 = 18.3m (60 ft.)

For additional resource information:

Visit our web site at www.siemon.com

Asia/Pacific
Shanghai, P.R. China
Phone (86) 21 6390 6778

Central & South America
Bogota, Colombia
Phone (571) 317 2121