

10G 6A™ UTP MC® MODULAR CORDS

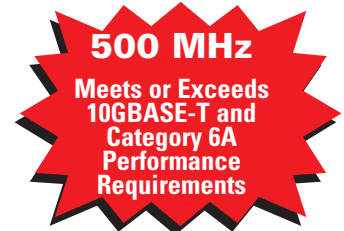
Siemon takes patch cord performance to the next level with our 10G 6A MC modular patch cords. Part of Siemon's 10G ip™ Cabling Solutions, these next generation cords meet or exceed all TIA-568-B.2-10 category 6A performance requirements.

A variety of plug and cable enhancements contribute to the cord's performance – including a patented cross-pair isolator, extended frequency cable and an innovative 360° crimp which provides excellent plug-to-cable strain relief without causing pair deformation.

Combine the 10G 6A MC modular cord with Siemon's 10G 6A UTP MAX® modules, patch panels and cable for a complete 10G 6A UTP channel solution.



10G ip™
PATENTED



PATCH CORDS, PLUGS & CABLE

High quality modular plugs provide long-term resistance to corrosion, humidity, extreme temperatures and airborne contaminants

360 degree crimp provides excellent plug-to-cable strain relief without causing pair deformation

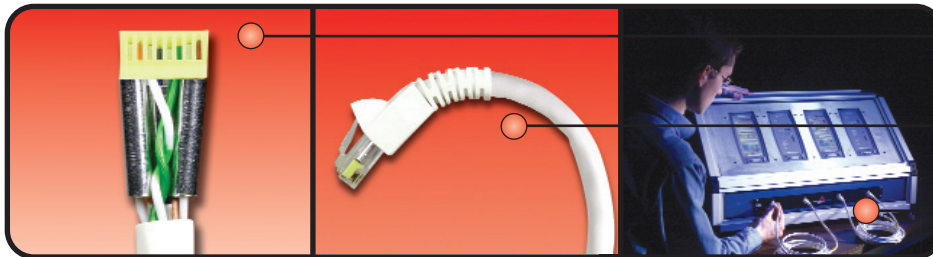
Internal stranded cordage isolator provides extended flex life and maintains ideal pair geometry and exceeds the category 6A performance specifications

Slide-on boots feature a latch guard to protect plug from snagging when pulling through pathways or cable managers

10G 6A cords feature dual jacket construction for excellent alien crosstalk performance

Bend relief boots accept oval icons for additional color coding of modular plug ends

Smaller inner cable diameter improves bend radius and flexibility



Patented metallic isolator shields pairs inside plug for optimum NEXT performance

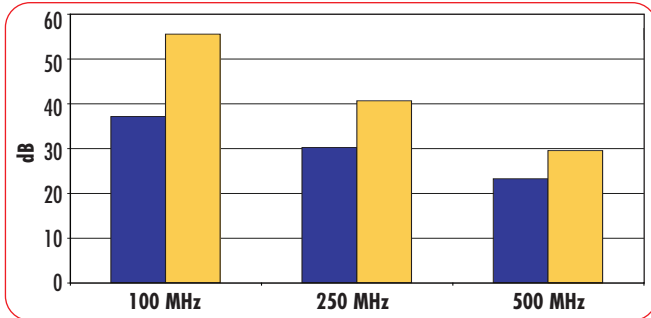
37 mm boot ensures excellent bend relief, critical for category 6A performance

100% transmission testing ensures category 6A modular cord specifications and guarantees optimum field performance

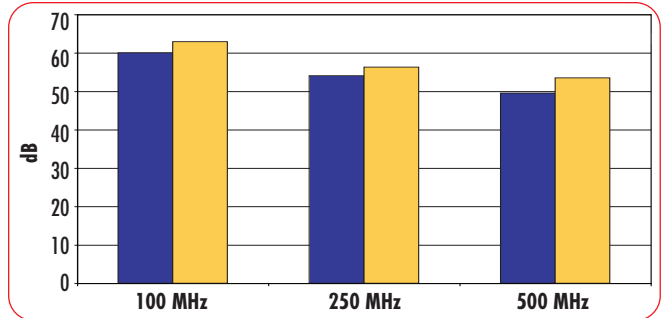
10G

Channel Performance Data for 10G 6A™ UTP Solution*

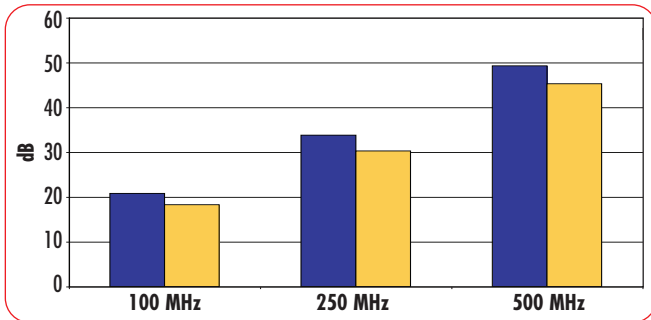
PS NEXT



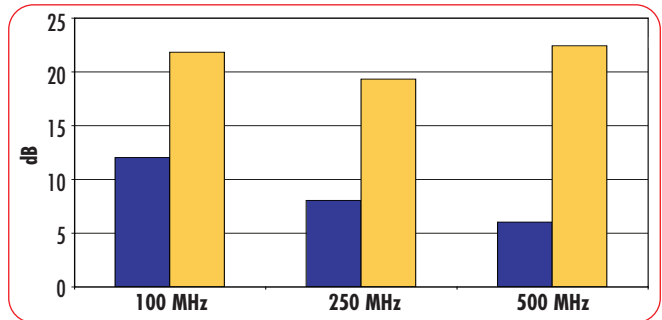
PS ANEXT Loss



Insertion Loss



Return Loss



■ Cat 6A Limit ■ Typical

*4 Connector Channel Performance Data utilizes 10G 6A MAX® UTP Modules, 10G 6A MC® UTP Modular Cords or 10G 6A BladePatch® UTP Patch Cord, 10G 6A MAX Panel, S210® Connecting Blocks and 10G 6A UTP Cable

10G 6A UTP MC Modular Cords:

MC6A-(XX)-(XX) 10G 6A MC, double-ended, 4-pair UTP stranded modular cord, T568A/B, color matching jacket/boot

Use 1st (XX) to specify cord length:

03 = 0.9m (3 ft.), 05 = 1.5m (5 ft.), 07 = 2.1m (7 ft.), 10 = 3.1m (10 ft.), 15 = 4.6m (15 ft.), 20 = 6.1m (20 ft.)

Use 2nd (XX) to specify color:

01 = black, 02 = white, 03 = red, 04 = gray, 05 = yellow, 06 = blue, 07 = green

ⓑ Add "B" for bulk project pack of 100 modular cords



For additional resource information:

Visit our web site at www.siemon.com

For related product information request Spec Sheet(s):

10G 6A UTP MAX Modules (PROD-SS-MX10G6)
 10G 6A MAX Panels (PROD-SS-10G6PP)
 10G 6A UTP BladePatch (PROD-SS-10G6ABDPUTP)
 MAX Modular Faceplates (PROD-SS-MXF)
 10G 6A UTP Cable (PROD-SS-10G6ACBLUS)

Because we continuously improve our products, Siemon reserves the right to change specifications and availability without prior notice.

10G 6A™, 10Gip™, MC®, BladePatch®, MAX® and S210® are trademarks of Siemon

The Americas
 Watertown, CT USA
 Phone (1) 860 945 4200

Europe/Middle East/Africa
 Surrey, England
 Phone (44) 0 1932 571771

Asia/Pacific
 Shanghai, P.R. China
 Phone (86) 21 6390 6778

Japan
 Tokyo, Japan
 Phone (03) 5405 7650