

Z-MAX™ 6 UTP PATCH PANELS

Z-MAX 6 UTP patch panels harness unprecedented performance and reliability in a high-density modular solution. These complete patch panel kits combine 19 inch patch panels with Z-MAX 6 panel outlets to offer an exceptional category 6 patching solution.

The Z-MAX 6 UTP patch panels facilitate a world-class installation for data centers and telecommunications rooms by offering an attractive appearance combined with flexible labeling and color coding options.

The Z-MAX panel modules feature a patent pending angled IDC contact pattern to exploit the widest module cross-section, enabling up to 48-ports in just 1U of rack space.



PATENTED



Z-MAX™

MODULAR PATCHING

STANDARDS COMPLIANCE

- ANSI/TIA-568 C.2 (Category 6)
- ISO/IEC 11801:2002 (Category 6)
- IEEE 802.3an
- IEEE 802.3af (PoE)
- IEEE 802.3at (PoE+)
- IEC 60603-7
- TIA-968-A (formerly FCC Part 68 Subpart F)

Additional space is provided for custom user labeling

High visibility snap-on magnifying label holders except either paper labels or Z-MAX icons for port identification

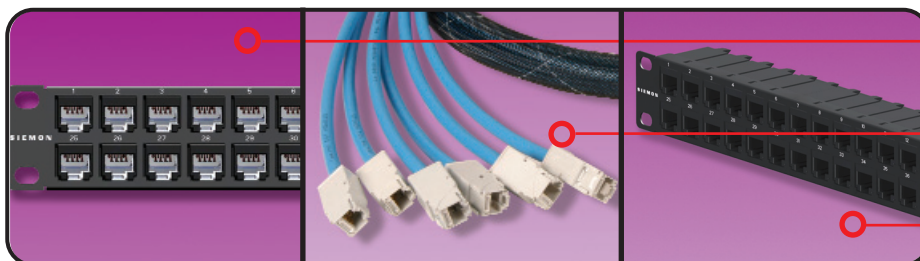
Lightweight, high strength steel with durable black finish

A quick-release lever allows individual modules to be easily removed even in high density applications

Panel outlets easily snap into place to accelerate installation

Integrated rear cable manager ensures proper cable management practices for all installations

Bold port numbering enables quick identification of outlets



Panels are provided in complete kits which include the patch panel and Z-MAX panel outlets

Leverage the quick-snap design by combining Z-MAX trunk assemblies with empty Z-MAX patch panels

High density version provides 48 ports in just 1U to reduce valuable rack space consumption

PRODUCT INFORMATION

Performance Specification Chart:

| ELECTRICAL | |
|--|--|
| Contact Resistance | 20 mΩ |
| Input to Output Resistance | 200 mΩ |
| Min. Dielectric Withstand Voltage (contact to contact) | 1000 V DC or AC peak |
| Min. Dielectric Withstand Voltage | 1500 V DC or AC peak |
| Insulation Resistance | 500 mΩ |
| Compatibility | Backwards to cat 5e and cat 6 |
| Current Rating | 1.5 A |
| PoE | Suitable for PoE and PoE+ |
| MECHANICAL – GENERAL | |
| Operating Temperature | -10 to 60 °C, (14 to 140 °F) |
| Flammability Rating | UL 94 V-0 |
| Green Features | RoHS, lead-free, halogen-free, PVC free |
| Housing Material | Glass-reinforced nylon |
| Contact Materials | Plated phospher bronze, stainless steel |
| Plastic Materials | Flame retardant thermoplastic |
| Dimensions (LxWxH) | 109.2 mmx 482.6mm x 44.2mm (4.30"x19.00" x 1.74") |
| Mounting | CEA-310-E 19-inch (482.6mm) rack |
| Material — Panel | 18 gauge cold rolled steel, black e-coat |
| MECHANICAL – JACK | |
| Number of Plug Insertion Cycles | 2500 |
| Min. Contact Force | 50g |
| Min. Plug Retention Force | 50N |
| Plug Compatibility | Compatible with RJ45 (8-position) or RJ11 (6-position) plugs |

| MECHANICAL – TERMINATION | |
|--------------------------------------|------------------------------|
| Wire Size Range (nominal) | 23-26 AWG solid and stranded |
| Wire Insulation Diameter Range (max) | 1.48mm (0.058 in) |
| Conductor OD Size (max) | 0.60mm (0.023 in) |
| Cable OD (max) | 9mm (0.354 in) |
| Reterminations | 5 |
| Wiring | T568A/B |



Panel Accessories

- Z-PNL-PL24.....Patch panel label sheet, numbered 1 to 24, bag of 100
- Z-PNL-PL48.....Patch panel label sheet, numbered 25 to 48, bag of 100
- Z-PNL-PSPatch panel label holder, bag of 25
- Z6-PZ-MAX 6 UTP panel outlet



Note: Z-MAX UTP panels are designed for use with Z-MAX UTP panel outlets only

Ordering Information:

- Z6-PNL(X)-24K.....Z-MAX 24-Port, CAT 6 UTP Patch Panel Kit, 1 RMS, Black, with Jacks
- Z6-PNL(X)-U48K.....Z-MAX 48-Port, CAT 6 UTP Patch Panel Kit, 1 RMS, Black, with Jacks
- Z-PNL(X)-24E.....Z-MAX 24-Port UTP Patch Panel, 1RMS, Black, Empty
- Z-PNL(X)-U48E.....Z-MAX 48-Port UTP Patch Panel, 1RMS, Black, Empty

Mounting Style
(Blank) - Flat
A - Angled

*Call for availability

For additional resource information:

Visit our web site at www.siemon.com

The Americas
 Watertown, CT USA
 Phone (1) 860 945 4200 US
 Phone (1) 888 425 6165 Canada

Europe/Middle East/Africa
 Surrey, England
 Phone (44) 0 1932 571771

Asia/Pacific
 Shanghai, P.R. China
 Phone (86) 21 6390 6778

Central & South America
 Bogota, Colombia
 Phone (571) 317 2121