

Z-MAX™ 5e Shielded Patch Panels

Z-MAX 5e shielded patch panels provide unprecedented performance and reliability in a high-density modular solution. These complete patch panel kits combine 19 inch shielded patch panels with Z-MAX 5e shielded panel outlets to offer the industry's highest performing category 5e patching solution.

The Z-MAX shielded patch panels facilitate a world-class installation for data centers and telecommunications rooms by offering an attractive appearance combined with flexible labeling and color coding options.

These panels also accelerate installation through quick-snap module insertion and automatic grounding of modules via an embedded grounding conductor. The panel allows one- or two-hole ground lug connections to the site grounding system. This complete shielded solution provides maximum protection from outside interference and superior 5e performance.



PATENTED



Z-MAX™

MODULAR PATCHING

STANDARDS COMPLIANCE

- ANSI/TIA-568-C.2
- ISO/IEC 11801 2nded Amendment 1
- ISO/IEC 11801 2nded Amendment 2
- IEC 60603-7
- IEC 60603-7-51
- IEEE 802.3an
- IEEE 802.3af (PoE)
- IEEE 802.3at (PoE+)
- TIA-968-A (formerly FCC Part 68 Subpart F)

Additional space is provided for custom user labeling

High visibility snap-on magnifying label holders accept either paper labels or Z-MAX icons for port identification

Lightweight, high strength steel with durable black finish

A quick-release lever allows individual modules to be easily removed even in high density applications

Panel outlets easily snap into place and are automatically grounded without additional steps

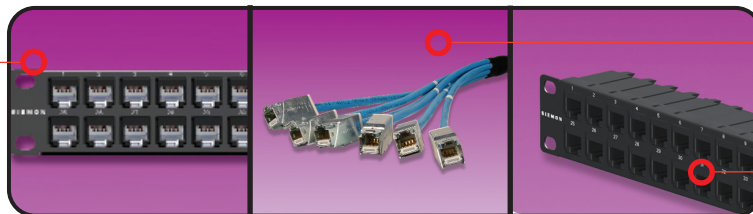
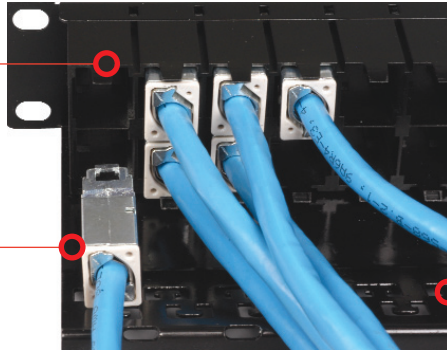
Bold port numbering enables quick identification of outlets

Integrated rear cable manager ensures proper cable management practices for all installations

Panels are provided in complete kits which include the patch panel and Z-MAX panel modules

Leverage the quick-snap design by combining Z-MAX trunk assemblies with empty Z-MAX patch panels

High density version provides 48 ports in just 1U to reduce valuable rack space consumption



PRODUCT INFORMATION

Performance Specification Chart:

ELECTRICAL	
Contact Resistance	20 mΩ
Input to Output Resistance	200 mΩ
Min. Dielectric Withstand Voltage (contact to contact)	1000 AC peak
Min. Dielectric Withstand Voltage	1500 V DC (Shield)
Insulation Resistance	500 Mohm
Current Rating	1.5 A
PoE	Suitable for PoE and PoE+
MECHANICAL – GENERAL	
Operating Temperature	-10 to 60 °C, (14 to 140 °F)
Flammability Rating	UL 94 V-0
Green Features	RoHS, lead-free, halogen-free, PVC free
Housing Material	Zinc die cast
Contact Materials	Plated phospher bronze, stainless steel
Plastic Materials	Flame retardant thermoplastic
Dimensions (LxWxH)	109.2 mmx 482.6mm x 44.2mm (4.30"x19.00" x1.74")
Shield	360 degree enclosure
Mounting	19-inch (482.6mm) rack CEA-310-E
Material — Panel	18 gauge cold rolled steel, black e-coat
Ground Lug Attachment	3/8" 1 hole or two-hole lug (1" spacing)
MECHANICAL – JACK	
Number of Plug Insertion Cycles	2500
Min. Contact Force	50g
Min. Plug Retention Force	50N
Plug Compatibility	Compatible with RJ45 (8-position) or RJ11 (6-position) plugs

MECHANICAL – TERMINATION	
Wire Size Range (nominal)	23-26 AWG solid and stranded*
Wire Insulation Diameter Range (max)	1.48mm (0.058 in)
Conductor OD Size (max)	0.60mm (0.023 in)
Cable OD (max)	9mm (0.354 in)
Reterminations	5
Wiring	T568A/B

* Termination technique may vary. See product instructions for details

Ordering Information:

Z5S-PNL(X)-24K.....24 Port, Z-MAX 5e shielded patch panel kit,1U, black
 Z5S-PNL(X)-U48K.....48 Port, Z-MAX 5e shielded patch panel kit, 1U, black
 ZS-PNL(X)-24E.....24 Port, Z-MAX shielded patch panel empty,1U, black
 ZS-PNL(X)-U48E.....48 Port, Z-MAX shielded patch panel empty,1U, black

Use (X) to specify Mounting Style.

(Blank) - Flat

(A) - Angled

Panel Accessories

Z-PNL-PL24.....Patch panel label sheet, numbered 1 to 24, bag of 100
 Z-PNL-PL48.....Patch panel label sheet, numbered 25 to 48, bag of 100
 Z-PNL-P.....Patch panel label holder, bag of 25
 Z5-SP.....Z-MAX 5e shielded panel outlet

Panels include Z-Tool*, label / icon holders, designation labels, cable ties, grounding lug and mounting hardware.

Note: 1U = 44.5mm (1.75 in.)

* included in kit only

Because we continuously improve our products, Siemon reserves the right to change specifications and availability without prior notice.

Z-MAX™ is a trademark of Siemon

For additional resource information:

Visit our web site at www.siemon.com

The Americas

Watertown, CT USA
 Phone (1) 860 945 4200 US
 Phone (1) 888 425 6165 Canada

Europe/Middle East/Africa

Surrey, England
 Phone (44) 0 1932 571771

Asia/Pacific

Shanghai, P.R. China
 Phone (86) 21 6390 6778

Latin America

Bogota, Colombia
 Phone (571) 317 2121