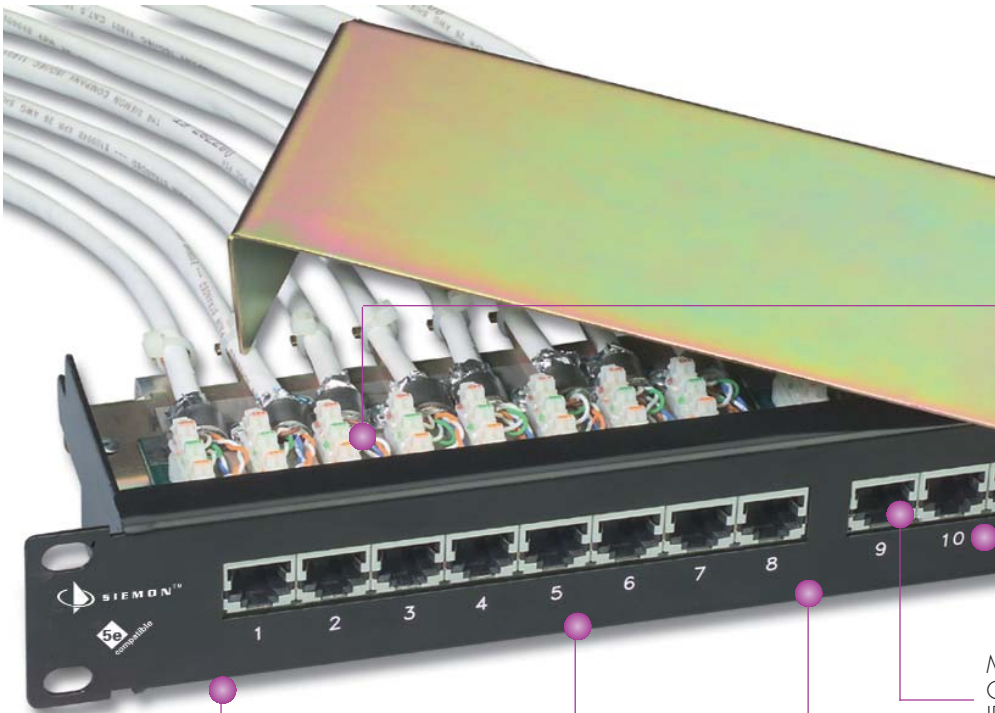


HD5® ScTP PATCH PANELS

The HD5 ScTP Series patch panel provides a high density modular solution for termination of 4-pair screened (ScTP) cable. The HD5 ScTP panel provides transmission performance that meets category 5e system requirements, and is fully compliant with shielding effectiveness as defined by the CENELEC and ISO/IEC standards. Siemon compliant pin technology allows the use of Siemon's multi-pair impact tool to minimize termination time. Shield continuity can be achieved by using either ground clip or spade. Two ground lugs are provided (one on each side of panel) for attaching 4.115mm (6 AWG) ground wire to ground and connecting multiple panels together. Built-in cable management and strain relief are integrated on rear of panel. Optional rear cable management bracket is available to properly guide cables to and from the back side of panel.



MODULAR PATCHING



Shield continuity can be achieved by either ground clip or spade

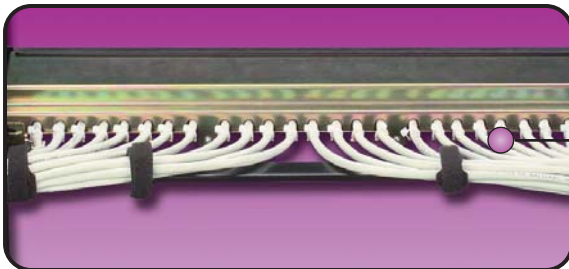
Port identification numbers on front and rear

Modular screened outlets are FCC CFR 47 part 68 subpart F and IEC 60603-7 compliant and have 50 microinch gold plated contacts

Panel available in 24-port configuration

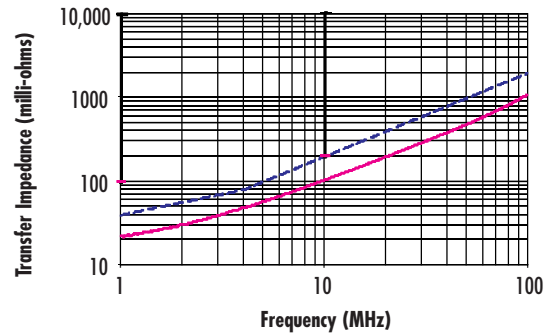
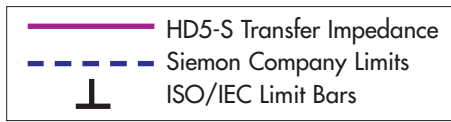
Black anodized panels can be mounted directly to 19 inch EIA and IEC standard relay rack or cabinet

Circuit boards tested in both directions as required by TIA and ISO specifications



Screened HD5 patch panels are compatible with standard HD panel rear cable managers to provide additional management of cable routing

Transfer Impedance for HD5® Series:



HD5 Screened Patch Panel:

HD5-S-2424-port screened panel, T568A/T568B wiring, 1 RMS

Cable Managers:

HD-RWMRear cable management bracket for HD patch panels



Note: 1 RMS = 44.5mm (1.75 in.)

Screened MC® 5 Modular Cords:

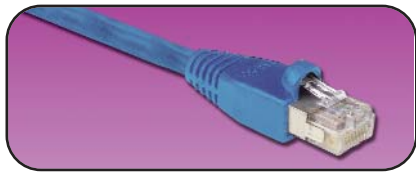
MC5S-(XX)M-(XX)LScreened category 5e, double ended, 4-pair screened, stranded LSOH modular cord, T568A/T568B, color matching jacket/boot

Use 1st (XX) to specify length:

01 = 1m (3.3 ft.), 02 = 2m (6.6 ft.), 03 = 3m (9.8 ft.), 05 = 5m (16.4 ft.)

Use 2nd (XX) to specify boot color:

01 = black, 02 = white, 03 = red, 05 = yellow, 06 = blue, 07 = green



Because we continuously improve our products, Siemon reserves the right to change specifications and availability without prior notice.

HD®, MAX® and MC® are trademarks of Siemon

The Americas

Watertown, CT USA
Phone (1) 860 945 4200

Europe/Middle East/Africa

Surrey, England
Phone (44) 0 1932 571771

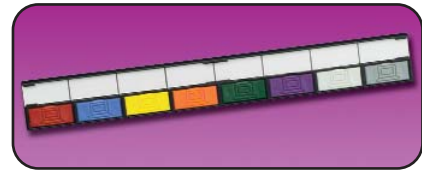
Asia/Pacific

Shanghai, P.R. China
Phone (86) 21 6390 6778

Labeling:

HD5-ICON8 Adhesive-backed strips in a package of 4 for color-coding and port designation for 16-, or 32-port panels (icons not included)

HD5-ICON8-LBL 20 sheets of labels for HD5-ICON8 for laser printing (8 labels per sheet)*



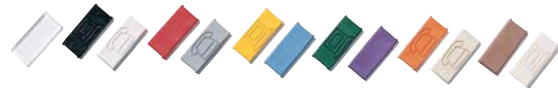
CT-ICON-(XX) 25 colored icon tabs (phone on one side, computer on reverse)

CT-ICON-LBL* 10 label sheets for clear tabs that will fit any 8.5 in. x 11 in. printer, 168 labels per sheet

Use (XX) to specify color:

01 = black, 02 = white, 03 = red, 04 = gray, 05 = yellow, 25 = bright white, 06 = blue, 07 = green, 08 = violet, 09 = orange, 20 = ivory, 60 = brown, 80 = light ivory

*Visit our web site at www.siemon.com or contact our Technical Support Department for labeling software.



For related product information request Spec Sheet(s):

Termination Tools (PROD-SS-S78)

Screened MC Modular Patch Cords (PROD-SS-MCS)

Screened MAX® 5e Modules (PROD-SS-MX5S)

19 inch Cable Management (PROD-SS-CBM)