

10G 6A™ MAX® PANELS

The 10G 6A UTP MAX patch panel provides a rack mount solution for termination of 10G 6A MAX modules to enable augmented category 6 performance in a reliable and flexible modular solution. Available in 24- and 48-port configurations, the 10G 6A patch panel's optimized port spacing ensures alien crosstalk performance. As part of Siemon's end-to-end 10G 6A system channel, this panel supports system performance up to and beyond pending 10GBASE-T standards. The complete Siemon 10G 6A UTP channel also consists of 10G 6A BladePatch® and MC® patch cords, 10G 6A MAX modules, 10G 6A UTP cable and 10G MAX faceplates.

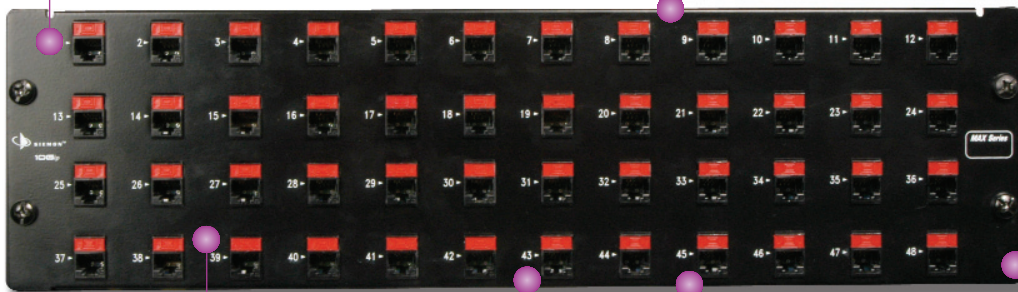
10G ip™
PATENTED

MODULAR PATCHING

Panels can be mounted directly on standard 19 inch relay rack or cabinet

Available in standard 2 RMS, 24-port version or higher density 3 RMS, 48-port version

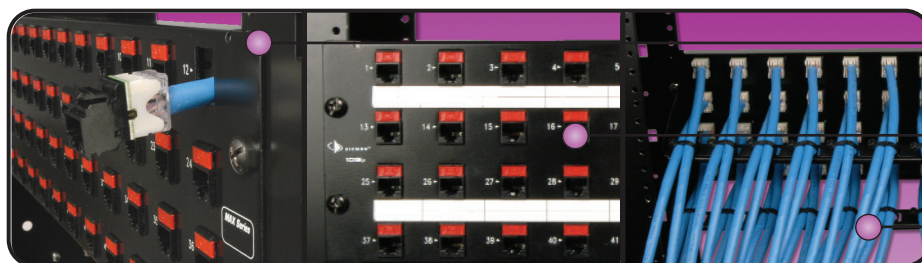
Panels feature rigid rear cable managers for easy routing and bend radius control



Port spacing optimized to ensure alien crosstalk compliance

Bold port numbering enables quick identification of outlets

Black anodized finish, rolled edges and screw-free front surface provide an aesthetically pleasing appearance



Individual 10G 6A MAX modules snap into place from front or rear of panel for added installation flexibility

Removable designation labels, included, enable proper circuit identification for each port

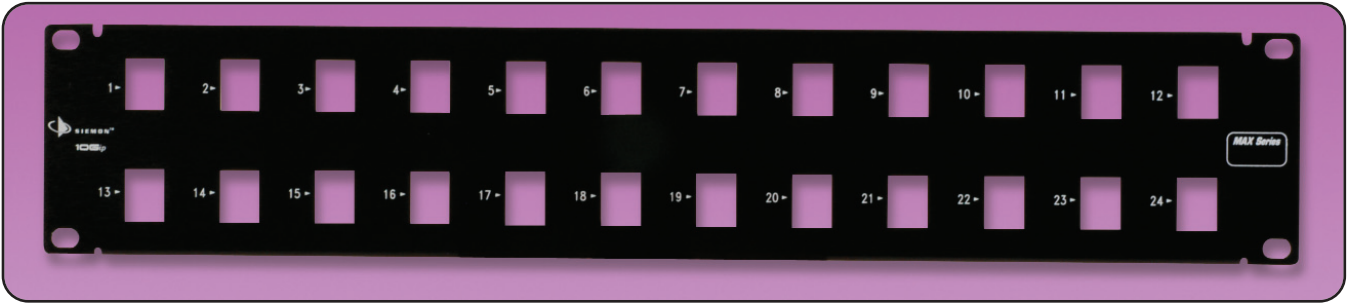
Rear cable management bar included for neatly routing horizontal cables to terminations

PRODUCT INFORMATION

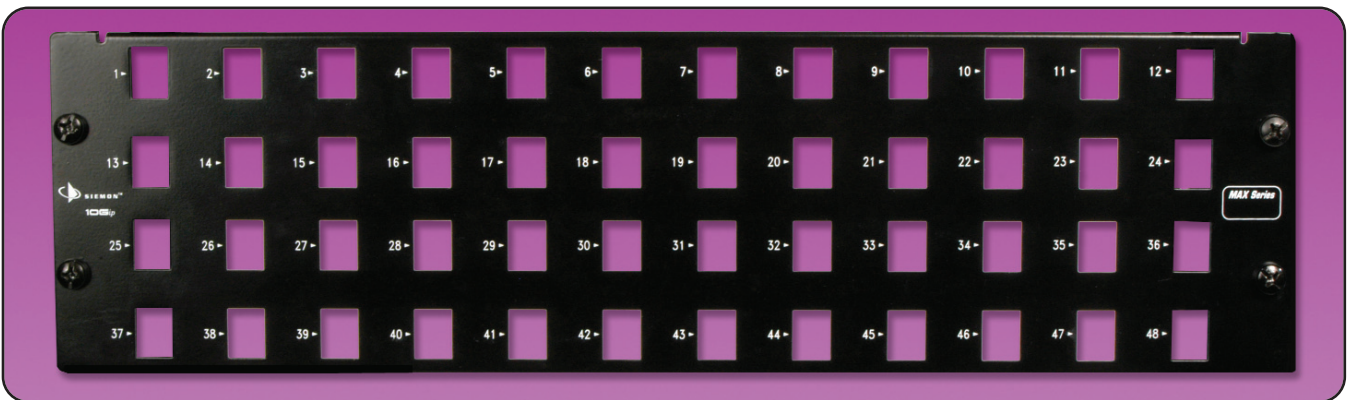
MODULAR PATCHING

10G 6A™ MAX® Panels:

10GMX-PNL-24.....24-port panel, 2 RMS



10GMX-PNL-48.....48-port panel, 3 RMS



Panels include rear cable manager, designation labels, cable ties, and mounting hardware.

10G 6A MAX modules available separately.

Note: 1 RMS = 44.5mm (1.75 in.)

Because we continuously improve our products, Siemon reserves the right to change specifications and availability without prior notice.

10G 6A™, 10G ip™, MC®, MAX® and BladePatch®, are trademarks of Siemon

For additional resource information:

Visit our web site at www.siemon.com

For related product information request Spec Sheet(s):

- 10G 6A UTP MAX Modules (PROD-SS-MX10G6)
- 10G 6A UTP BladePatch® (PROD-SS-10G6BDP)
- 10G 6A UTP MC® Patch Cords (PROD-SS-MC10G6)
- 10G 6A UTP Cable (PROD-SS-10G6ACBLUS)
- MAX Modular Faceplates (PROD-SS-MXF)

The Americas
Watertown, CT USA
Phone (1) 860 945 4200

Europe/Middle East/Africa
Surrey, England
Phone (44) 0 1932 571771

Asia/Pacific
Shanghai, P.R. China
Phone (86) 21 6390 6778

Japan
Tokyo, Japan
Phone (03) 5405 7650

WWW.SIEMON.COM

ISO 9001
CERTIFIED

ISO 14001
CERTIFIED

