

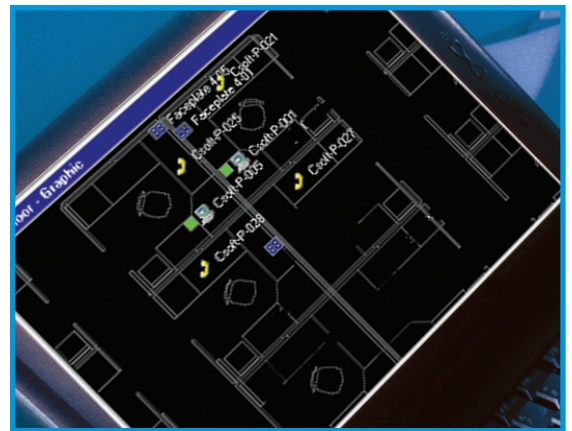


Simon's MapIT solution helps you better manage and protect your IT infrastructure. The system tracks physical layer connections and IP enabled network devices in real-time. While other software solutions may detect IP devices on the network, they cannot track them to their exact physical location. The MapIT solution provides a detailed view of your infrastructure, whether it is in your headquarter or at a remote office on the other side of the world. This powerful combination of Simon intelligent cabling products and advanced software takes management of complex data/telecom networks and critical applications to a new level.

THIS COMBINATION OF INTELLIGENT CABLING COMPONENTS AND ADVANCED SOFTWARE CAN PROVIDE THE FOLLOWING CAPABILITIES:

INFRASTRUCTURE DOCUMENTATION

- Hierarchical view of entire infrastructure
- Graphical view of racks and cabinets
- Import floor CAD layouts and overlay connections and devices
- View complete circuit diagrams, including network devices
- Real-time updates to database
- Extensive search functionality
- Store virtually any asset in the infrastructure database



IMPORT FLOOR LAYOUT DRAWINGS

PHYSICAL LAYER MONITORING

- Tracks TR connections in real-time
- Provides a complete end-to-end circuit trace
- Quickly identify the root cause network troubles
- Maps active devices to their physical layer connection and location

ASSET MANAGEMENT

- Discovers and documents all IP enabled devices and ties them to a physical location
- Switch port utilization/availability reports
- Physical Layer port utilization/availability reports
- Track and report on assets by type and/or location
- Auto e-mail alerts when switches reach 75% capacity

Remote Building 01	01	01MDF	Secure	0.00%	10/100
Headquarters	02	HQ-02-TR	NETGEARFSM726	50.00%	10/100
Headquarters	02	HQ-02-TR	CajunP1120	78.13%	Gigabit
Headquarters	03	HQ-03-TR	HQ-03-C-SIV1	31.09%	10/100
Datacenter	1st	HQ Datacenter	HQDC-08	1.85%	Gigabit
Datacenter	1st	HQ Datacenter	HQDC-09	4.32%	Gigabit
Datacenter	1st	HQ Datacenter	HQDC-10	3.70%	Gigabit
Datacenter	1st	HQ Datacenter	HQDC-11	3.70%	Gigabit
Datacenter	1st	HQ Datacenter	HQDC-12	3.70%	Gigabit
Datacenter	1st	HQ Datacenter	HQDC-13	0.00%	None
Datacenter	1st	HQ Datacenter	HQDC-01	4.32%	Gigabit
Datacenter	1st	HQ Datacenter	HQDC-02	4.32%	Gigabit
Datacenter	1st	HQ Datacenter	HQDC-03	3.09%	Gigabit
Datacenter	1st	HQ Datacenter	HQDC-04	3.70%	Gigabit
Datacenter	1st	HQ Datacenter	HQDC-05	3.70%	Gigabit
Datacenter	1st	HQ Datacenter	HQDC-06	0.00%	Gigabit
Datacenter	1st	HQ Datacenter	HQDC-07	0.00%	Gigabit
Remote Building 01	01	Demo 01	rack1-switch	0.00%	None
Remote Building 01	01	Demo 02	rack2-switch	0.00%	None
Remote Building 01	01	Demo 03	rack3-switch	0.00%	None
Remote Building 01	01	Demo 04	rack4-switch	0.00%	None
Remote Building 01	01	Demo 05	rack5-switch	0.00%	None
Remote Building 01	01	Demo 06	rack6-switch	0.00%	None

60 REPORTS FOR NETWORK AND ASSET MANAGEMENT

REMOTE SITE MANAGEMENT

- View end-to-end circuit status remotely
- Reduce Help Desk response time for trouble ticket resolution
- Ensure work orders are done accurately
- Automatically update database when work orders are complete
- Control unauthorized changes

IMPROVE WORK ORDER PROCESS

- Advanced work order module included with MapIT software
- Include floor and closet graphics with work orders
- Automatically update database when work orders are complete
- Track costs for work orders by department
- Management tools for order review and approval
- Auto routing feature helps design the best path for new circuits
- Reduce cost of moves, adds and changes

ENHANCED SECURITY

- Distinguish authorized versus unauthorized changes
- Trigger e-mail alerts for unauthorized changes
- Maintains an audit log of all network events
- Database backup for disaster recovery



SYSTEM REQUIREMENTS

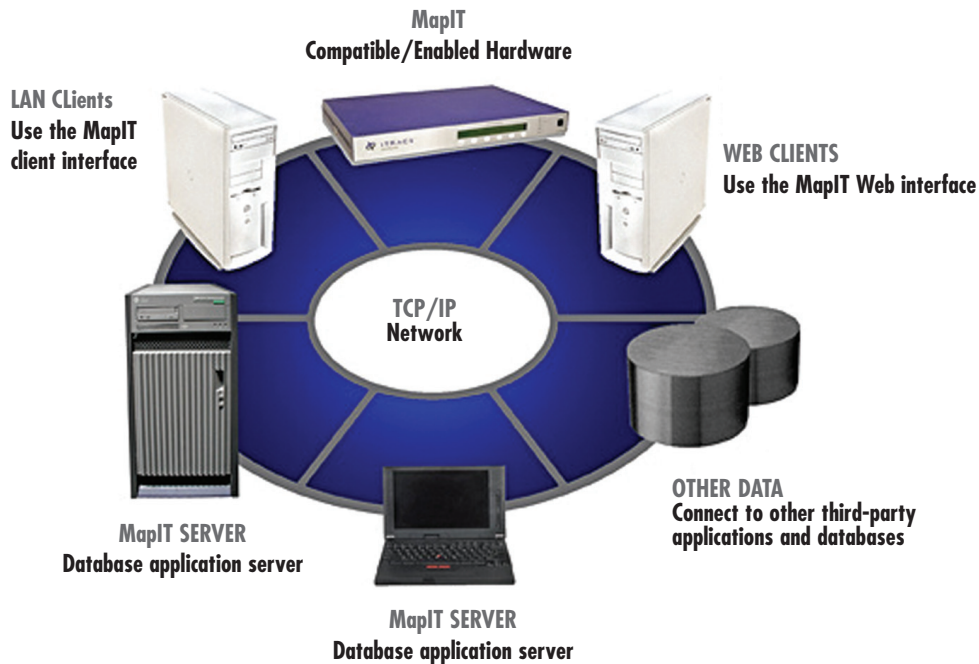
The MapIT IM software is designed for Windows 32-bit environments, including Windows 2000 and 2003 family of servers, and Windows XP Professional workstations running over a TCP/IP network. Siemon recommends running MapIT IM on a high specification Windows 2003 Server under Terminal Services. The matrix below lists the recommended system requirements for the installation of MapIT IM to servers and workstations. These are only recommendations and as such, it is important to keep in mind that more memory, disk space and processing power will greatly enhance overall productivity.

SERVER	RECOMMENDED
Operating System	Windows 2003 Server, Service Pack 1
Memory	1GB + 256MB for each concurrent MapIT IM user
Processor	Intel® Pentium® 4 processor - 3.4 GHz with Hyper-Threading Technology <i>Optional: Multiple Processors</i>
Free Disk Space	50GB (Installation + Database)
Display	1280 x 1024 x 32-bit color
Networking	100/1000 Network Interface Card (NIC) <i>Optional: An additional NIC is recommended to Terminal Server implementations</i>
Additional Software	Latest version Internet Explorer with current service packs applied <i>Optional: Terminal Services installed and licensed in Application Server mode</i> <i>Optional; Internet Information Server for deploying Terminal Services via Remote Desktop Web Connections</i>

CLIENT WORKSTATION	RECOMMENDED
Operating System	Windows XP Professional, Service Pack 2
Memory	1GB
Processor	Intel® Pentium® 4 processor - 2.4 GHz
Free Disk Space	10GB
Display	1280 x 1024 x 32-bit color
Networking	100/1000 Network Interface Card (NIC)
Additional Software	Latest version Internet Explorer with current service packs applied

IN ADDITION TO THE ABOVE SYSTEM RECOMMENDATIONS:

Any Desktop, Tablet PC or Hand-held PC device that is capable of running the Windows Remote Desktop Client, with a minimum screen resolution of 1024 x 768 may be used to access MapIT IM via Terminal Services.



SYSTEM CAPABILITIES	LIMITS
Size of the database	Unlimited
Number of ports monitored in the same database	Unlimited
Number of patch zones in the same database	Unlimited
Number of analyzers connected to the same database	Unlimited
Additional concurrent users	100
<i>Database size is typically less than 100MB. Practical limitations such as the memory size, hard disk space, network bandwidth and latency of the network or internet are possible. Concurrent user licenses are required.</i>	

MapIT SOFTWARE PART NUMBERS

M-PSLMapIT software port license, includes 1-year Gold Level Maintenance

M-5ASLMapIT Administrator Seat License (five additional administrative seat licenses)

MapIT™ and IM™ are trademarks of Siemon

The Americas
Watertown, CT USA
Phone (1) 860 945 4200

Europe/Middle East/Africa
Surrey, England
Phone (44) 0 1932 571771

Asia/Pacific
Shanghai, P.R. China
Phone (86) 21 6390 6778

Japan
Tokyo, Japan
Phone (81) 3 5437 1580