

MapIT G2 Master and Distribution Control Panels

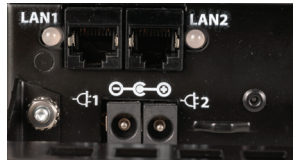
The MapIT G2 Master Control Panel (MCP) collects all network infrastructure data provided by the Smart Patch Panels and Fiber Enclosures, monitoring up to 2880 ports in just 1 rack mount space (1U). The MCP and DCP features an integrated LCD display and keypad, which provide technicians access to critical network architecture and diagnostic information. By providing this interactive interface locally within the patching zone, the MapIT G2 virtually eliminates the need for technicians to carry PDAs or directly access the MapIT software server. This user interface allows full end-to-end graphic circuit traces for any channel in the system and can perform diagnostic tasks on any component or port.



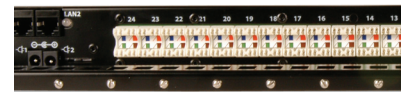
- SUPERIOR DENSITY**
 Low profile 1U design increases density and reduces usage of costly rack and cabinet space in data centers and telecommunication rooms
- REDUCED POWER CONSUMPTION**
 75% lower power consumption compared to traditional intelligent patching systems for monitoring equipment. This power savings decreases operating expenses and provides a more environmentally friendly solution
- EXCELLENT THERMAL EFFICIENCY**
 The MCP and DCP's combination of ultra low heat generation and a low profile design limits airflow impedance, helping to maximize cooling efficiency in data center environments
- SIMPLE, MULTI-FUNCTIONAL USER INTERFACE**
 Large graphic LCD and keypad enables technicians to view circuit traces, patch cord traces, perform diagnostics and more, improving efficiency in maintenance and MAC work
- EASE OF IMPLEMENTATION**
 Simple design and straightforward implementation and setup reduces the time and technician skill required to design and install the system



MCP Graphic LCD



Redundant power and Ethernet



Field-terminated control connections

Product Information

Features and Benefits

Item	Feature	Benefit
Smart Features	Large graphic LCD and keypad to view circuit traces, patch cord traces, perform diagnostics and more	Improves technician efficiency
Resilient	Redundant power and Ethernet	Increases reliability, reduces downtime
Physical Layer Monitor	Monitors patch cord connections	Identify unauthorized disconnections, protects critical applications, ensures accurate documentation
Density	Each unit monitors up to 2880 ports	Increases density and reduces cost
Power	Significantly lower power consumption for monitoring equipment	Decreases operating expenses, helps the environment
Heat	MCP and DCP run cold and their low profile does not impede cooling airflow in cabinets	Helps maximize cooling efficiency in data center environments
Connections	Control connections can be made using category 5e solid shielded cable. Control connections can be punched down on the rear of the panel or RJ45 control connections may be used off the front of the panel	Readily available, low cost, field configurable. Flexible connection points allow the user to determine how and where to make control connections.
Self Diagnostics	MCP continually monitors all components in the system and reports issues to MapIT software	Makes maintenance of the MapIT G2 system simple, reduces downtime
Scalable	MCP can monitor as few as 24 ports or up to 65,000 ports	Cost effective solution for monitoring small remote offices, large data centers or office/campus environments
Installation	Easy to understand and configure	Reduces the time required to design and install the system
Reliable	Tested to Mean Time Before Failure (MTBF) of 20 years	Improves product reliability and life

Product Information

Specifications

Weight and Dimensions	Height	44.45mm (1.75 in.)
	Width	482.6mm (19 in.)
	Depth	101.6mm (4 in.)
	Weight	2.27kg (5 lbs)
Network (MCP only)	Network	Ethernet, 10BASE-T
	Number of Ethernet Ports	2 (switching) with LED status indicators
	Protocol	TCP/IP
	SNMP	SNMPv1
LCD Display	Size	128 x 32 pixels
	Type	Graphic
	Backlight	White LED
	Timeout	User programmable 2 to 999 minutes
Power Supply	Form Factor	External
	Frequency Required	50-60Hz
	Nominal Voltage	AC 100-240V
	Power Consumption Operational	6.0V, 3.0A
	Type	Power Adapter
	Supplied Interfaces	US, UK, Europe, Japan, China, Australia
	Number of Power Inputs	2
Environmental	Operating Temperature	0° to 45° C (32° to 113° F)
	Operating Humidity	Up to 90%, non-condensing
	Storage Temperature	-40° to 70° C (40° to 158° F)
	Storage Humidity	Up to 90%, non-condensing
EMC	FCC Part 15 (47 CFR 15) Class A, ICES-003 Class A, EN55022/CISPR 22 Class A, AS/NZS 3548 Class A, CCC.	
EMC Immunity	EN/IEC 61000 - 4-2 EN/IEC 61000 - 4-3 EN/IEC 61000 - 4-4 EN/IEC 61000 - 4-5	EN/IEC 61000 - 4-6 EN/IEC 61000 - 4-11
Safety	UL 60950-1-1st Ed (2003) - Information Technology Equipment Safety Part 1: General Requirements ACA TS 001, AS/NZS 3260	

Ordering Information

MapIT® G2 Master and Distribution Control Panels

- M-MCPMapIT Master Control Panel, 1U, black*
- M-DCPMapIT Distribution Control Panel, 1U, black*

*Includes mounting hardware (1) probe pen, (1) power supply with adapters for various regions, rear cable manager, cable ties, S310 stuffer caps and ground lug



MapIT® G2 Interconnect Solution

MapIT G2 is now compatible with an interconnect topology allowing users to track switch to panel port connections. The MapIT G2 Interconnect Module is used to create a link between switch and panel port connections during initial installation or during moves, adds and changes.

- M-ICMMapIT G2 Interconnect Module



Optional Accessories

Second Power Supply

- M-PS.....6.0V, 3.0A power supply for MCP or DCP

Replacement Probe Pen

- M-PENMapIT pen probe, 7.62m (25 ft.) cord

Category 5e Shielded Cable for Control Connections

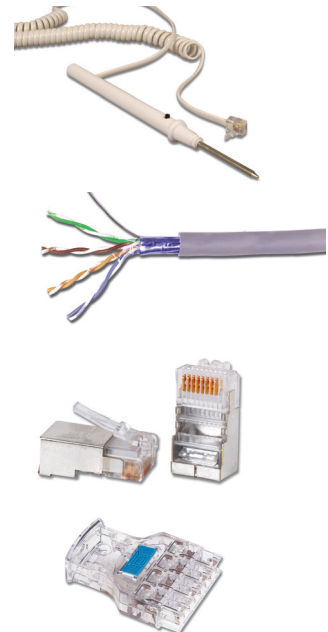
- 9A5R4-E1-(XX)-R1ARiser (CMR, CSA FT4) 305m (1000 ft.) Reel, (US)
- 9A5R4-E2PVC (CMR, CSA FT4) Blue jacket, 305m (1000 ft.), Reel-in-Box (International)

PS8-8 Shielded RJ45 Plugs

- PS-8-88-position shielded modular plug with 8 contacts (compatible with Siemon and Tyco crimp tools)

S110® Patch Plugs

- S110P4.....4-pair, field-terminated S110 patch plug (colored icons not included)



Because we continuously improve our products, Siemon reserves the right to change specifications and availability without prior notice.

S110® MapIT®, MAX® and LockIT™ are trademarks of Siemon

For related product information request Spec Sheet(s):

- MapIT G2 Smart Patch Panel (PROD-SS-MAPG2PP)
- MapIT G2 Smart Fiber Enclosure (PROD-SS-MAPG2FIBENC)
- LockIT Secure Connectivity (PROD-SS-LockIT)
- System 5e F/UTP Cable-US (PROD-SS-SYS5eFUTPCBLUS)
- Premium 5e F/UTP Cable-International (PROD-SS-CB5S)
- S110 Patch Plug (PROD-SS-10P)
- Z-MAX Modules (visit our website)

Visit <http://www.siemon.com/us/MapITG2/software-roadmap.asp> to view our Software Roadmap Notice

North America
Watertown, CT USA
Phone (1) 860 945 4200 US
Phone (1) 888 425 6165 Canada

Europe/Middle East/Africa
Surrey, England
Phone (44) 0 1932 571771

Asia/Pacific
Shanghai, P.R. China
Phone (86) 21 5385 0303

Latin America
Bogota, Colombia
Phone (571) 657 1950